

Institution: IRB

Protocol :Alignment Blue Red Violet_ALIGN.pro

Listmode Replay: Runtime Protocol

Analysis Date: 23-Jul-2012, 09:10:30

Settings File: Alignment Blue Red Violet_ALIGN.pro, 11-Jun-2012, 09:17:01

Listmode File: Gallios FlowCheck 2012-07-23 001.LMD

Run Date: 23-Jul-12, 09:08:17

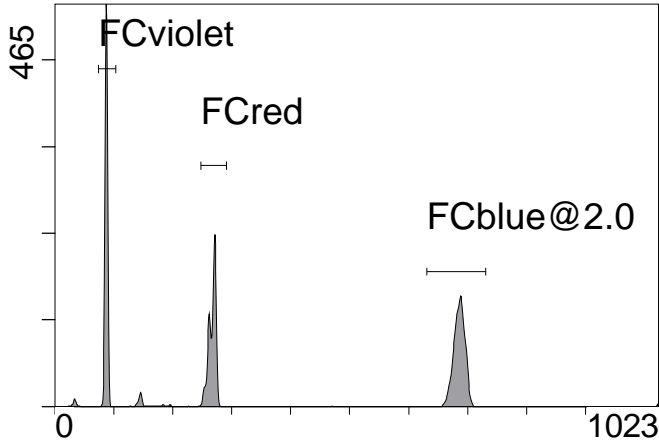
Sample ID: Gallios FlowCheck

User ID: duperray

Acquisition Time/Events: 84.4s / 8531 (PROTOCOL)

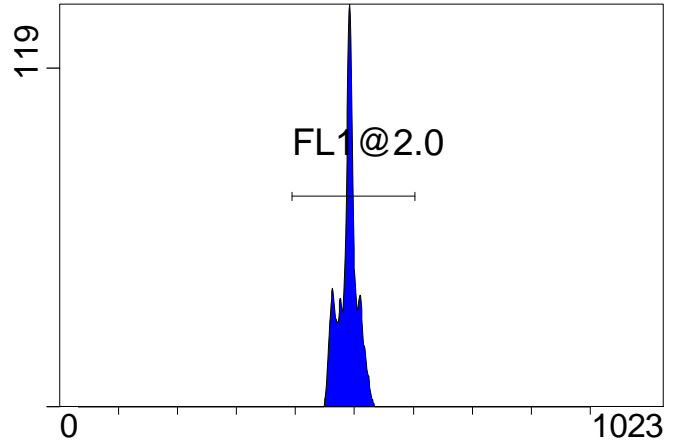
Instrument SN: AN11038 Software Version: Gallios 1.2

[Ungated] FS INT LIN



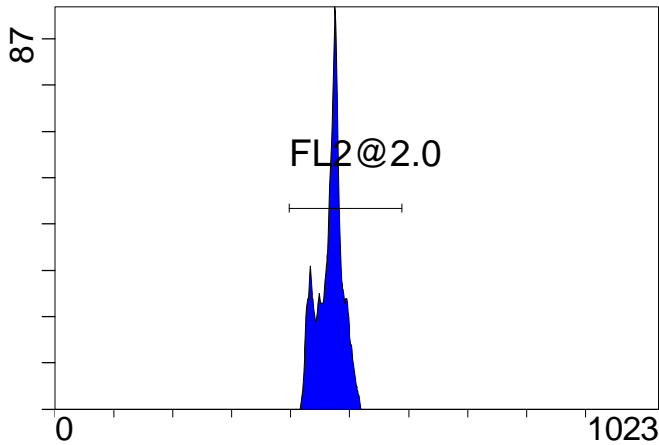
FS INT LIN

(3000) [FCblue@2.0] FL1 INT LIN



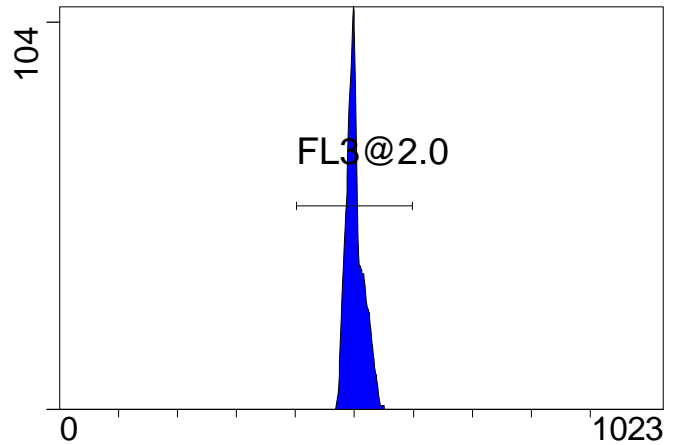
FL1 INT LIN

[FCblue@2.0] FL2 INT LIN



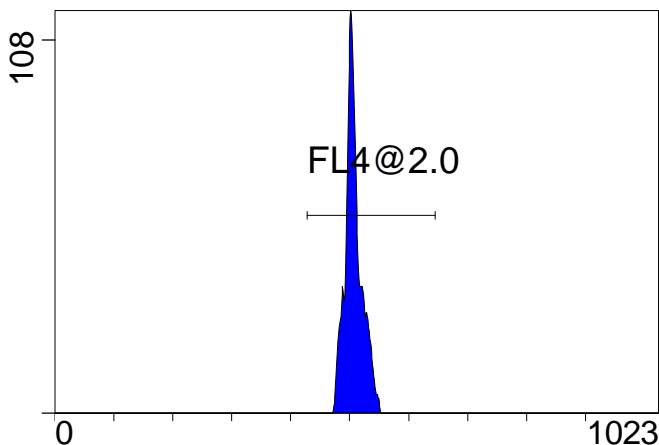
FL2 INT LIN

[FCblue@2.0] FL3 INT LIN



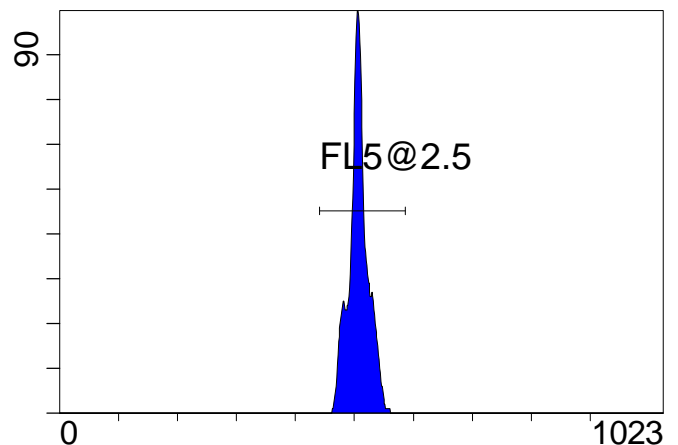
FL3 INT LIN

[FCblue@2.0] FL4 INT LIN



FL4 INT LIN

[FCblue@2.0] FL5 INT LIN



FL5 INT LIN

Institution: IRB

Protocol :Alignment Blue Red Violet_ALIGN.pro

Listmode Replay: Runtime Protocol

Analysis Date: 23-Jul-2012, 09:10:30

Settings File: Alignment Blue Red Violet_ALIGN.pro, 11-Jun-2012, 09:17:01

Listmode File: Gallios FlowCheck 2012-07-23 001.LMD

Run Date: 23-Jul-12, 09:08:17

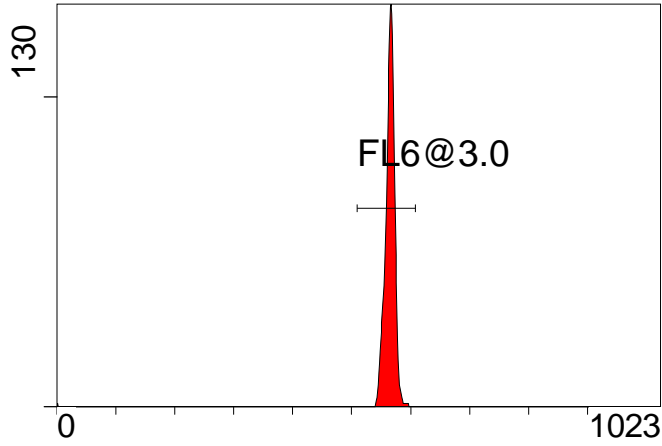
Sample ID: Gallios FlowCheck

User ID: duperray

Acquisition Time/Events: 84.4s / 8531 (PROTOCOL)

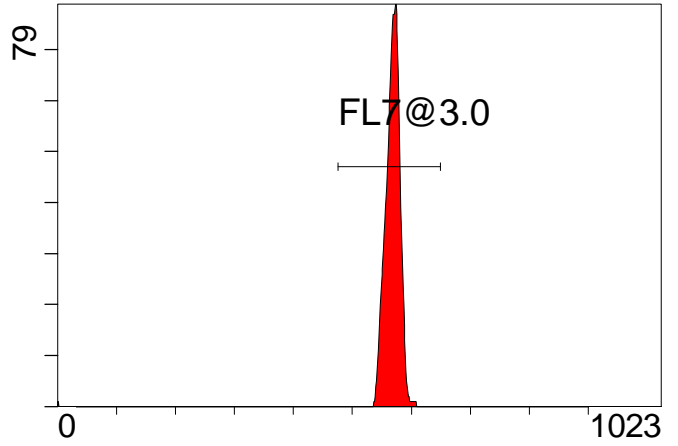
Instrument SN: AN11038 Software Version: Gallios 1.2

[FCred] FL6 INT LIN



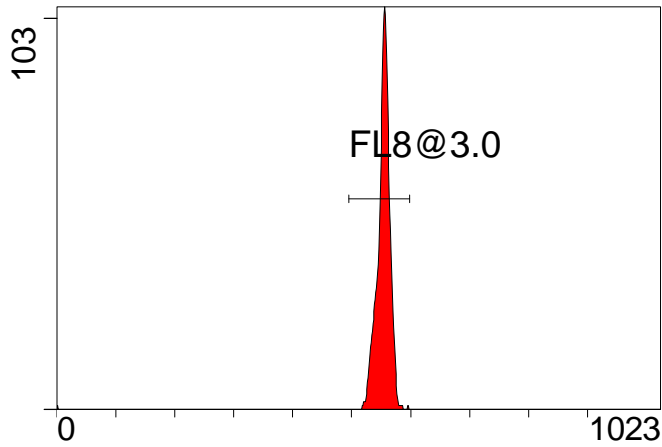
FL6 INT LIN

[FCred] FL7 INT LIN



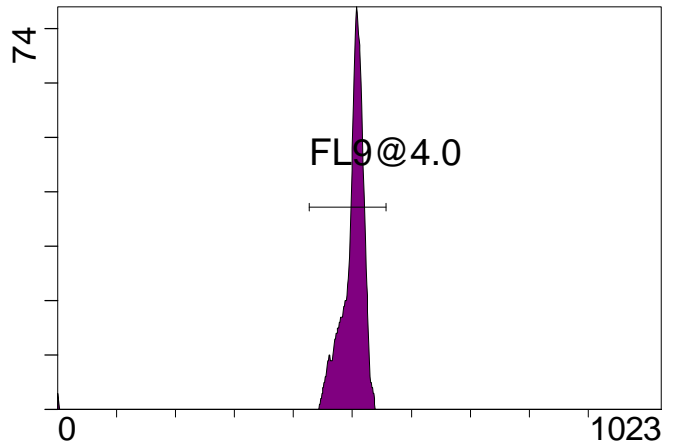
FL7 INT LIN

[FCred] FL8 INT LIN



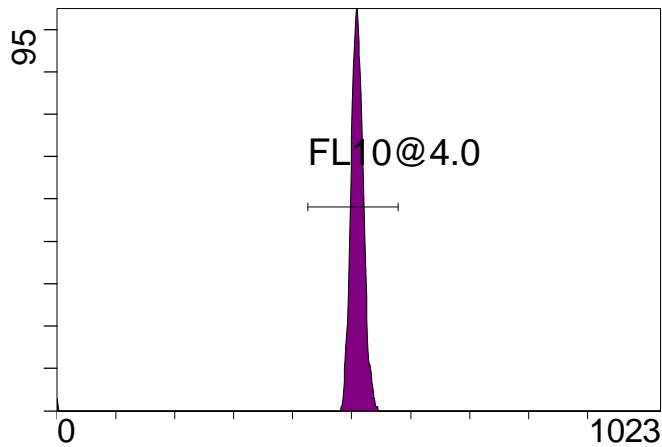
FL8 INT LIN

[FCviolet] FL9 INT LIN



FL9 INT LIN

[FCviolet] FL10 INT LIN



FL10 INT LIN

Statistical Analysis

PROGRAM INFORMATION

File:- Gallios FlowCheck 2012-07-23 001.LMD

Gate:- FCblue@2.0 [FCblue@2.0]

Compensation:-

Region	Number	X-Mean	X-HPCV
ALL	3000	489	0.96
ALL	3000	507	1.50
ALL	3000	507	1.25
ALL	3000	502	1.35
ALL	3000	467	0.99
FL1@2.0	3000	489	0.96
FL2@2.0	3000	467	0.99
FL3@2.0	3000	502	1.35
FL4@2.0	3000	507	1.25
FL5@2.5	3000	507	1.50

File:- Gallios FlowCheck 2012-07-23 001.LMD

Gate:- FCred [FCred]

Compensation:-

Region	Number	X-Mean	X-HPCV
ALL	2375	551	1.16
ALL	2375	566	1.58
ALL	2375	562	0.90
FL6@3.0	2355	565	0.90
FL7@3.0	2363	569	1.58
FL8@3.0	2354	554	1.16

File:- Gallios FlowCheck 2012-07-23 001.LMD

Gate:- FCviolet [FCviolet]

Compensation:-

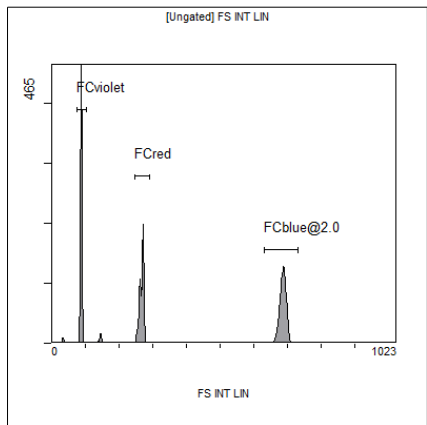
Region	Number	X-Mean	X-HPCV
ALL	2499	506	1.77
ALL	2499	495	1.51
FL10@4.0	2477	510	1.77
FL9@4.0	2469	501	1.51

File:- Gallios FlowCheck 2012-07-23 001.LMD

Gate:- Ungated

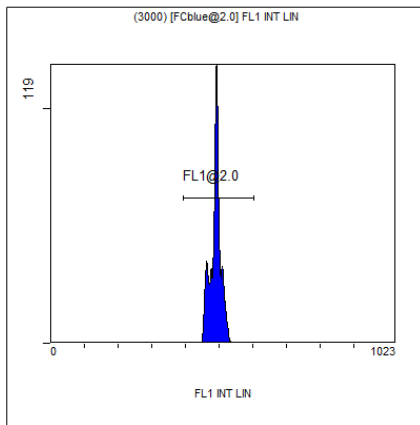
Compensation:-

Region	Number	X-Mean	X-HPCV
ALL	8531	359	1.58
FCblue@2.0	3000	686	1.23
FCred	2375	267	0.86
FCviolet	2499	87.2	1.58



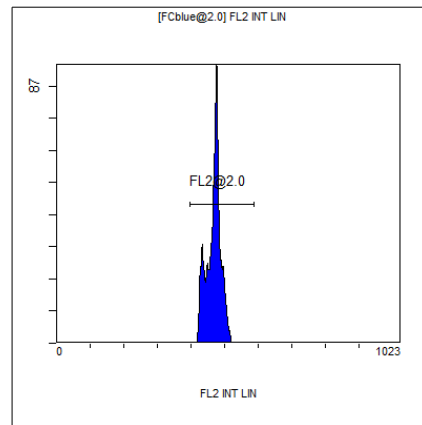
[Ungated] FS INT LIN

Region	Number	HP X-CV	X-Mean
ALL	8531	1.58	359
FCblue@2.0	3000	1.23	686
FCred	2375	0.86	267
FCviolet	2499	1.58	87.2



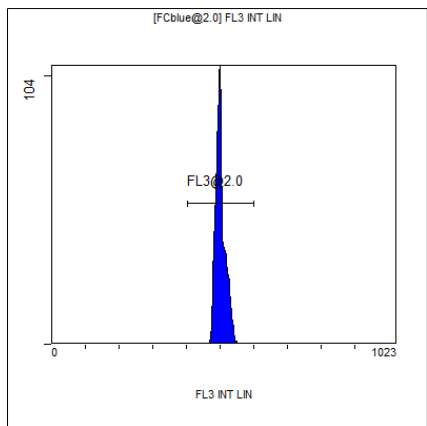
(3000) [FCblue@2.0] FL1 INT LIN

Region	Number	HP X-CV	X-Mean
ALL	3000	0.96	489
FL1@2.0	3000	0.96	489



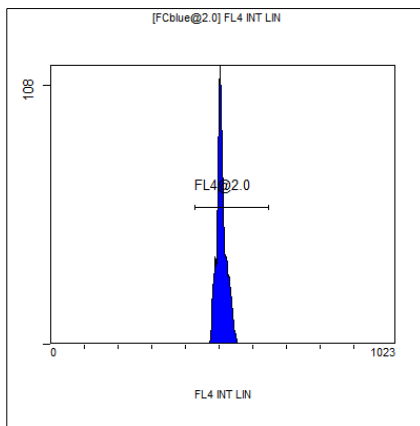
[FCblue@2.0] FL2 INT LIN

Region	Number	HP X-CV	X-Mean
ALL	3000	0.99	467
FL2@2.0	3000	0.99	467



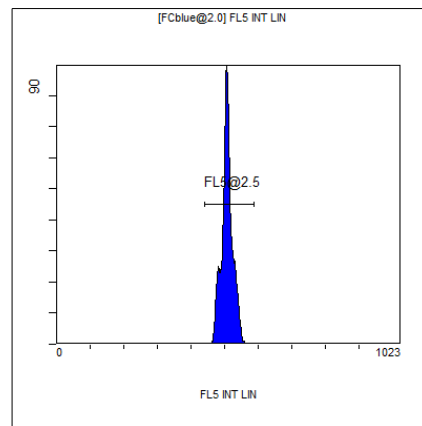
[FCblue@2.0] FL3 INT LIN

Region	Number	HP X-CV	X-Mean
ALL	3000	1.35	502
FL3@2.0	3000	1.35	502



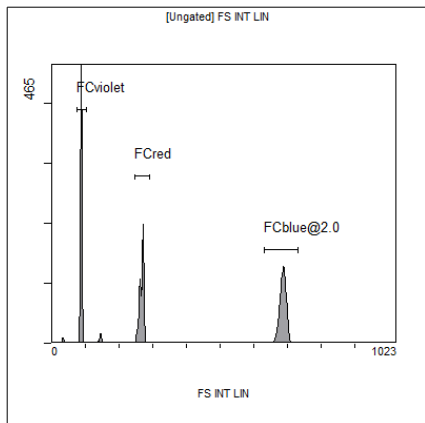
[FCblue@2.0] FL4 INT LIN

Region	Number	HP X-CV	X-Mean
ALL	3000	1.25	507
FL4@2.0	3000	1.25	507



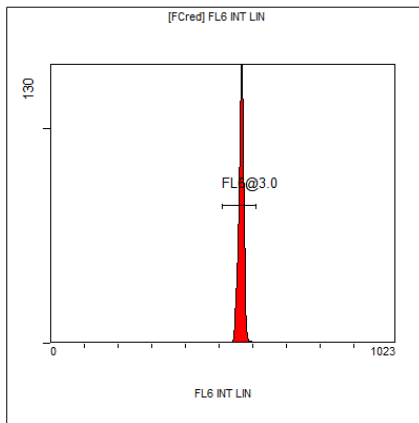
[FCblue@2.0] FL5 INT LIN

Region	Number	HP X-CV	X-Mean
ALL	3000	1.50	507
FL5@2.5	3000	1.50	507



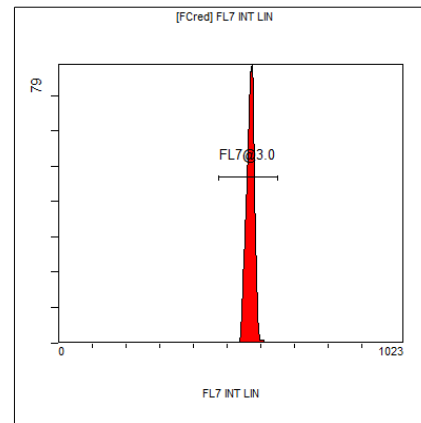
[Ungated] FS INT LIN

Region	Number	HP X-CV	X-Mean
ALL	8531	1.58	359
FCblue@2.0	3000	1.23	686
FCred	2375	0.86	267
FCviolet	2499	1.58	87.2



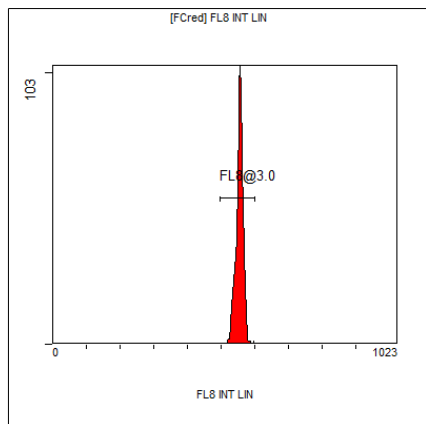
[FCred] FL6 INT LIN

Region	Number	HP X-CV	X-Mean
ALL	2375	0.90	562
FL6@3.0	2355	0.90	565



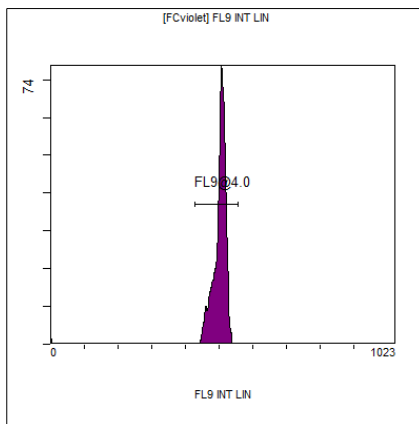
[FCred] FL7 INT LIN

Region	Number	HP X-CV	X-Mean
ALL	2375	1.58	566
FL7@3.0	2363	1.58	569



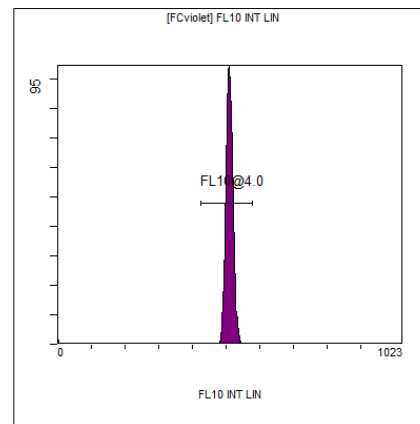
[FCred] FL8 INT LIN

Region	Number	HP X-CV	X-Mean
ALL	2375	1.16	551
FL8@3.0	2354	1.16	554



[FCviolet] FL9 INT LIN

Region	Number	HP X-CV	X-Mean
ALL	2499	1.51	495
FL9@4.0	2469	1.51	501



[FCviolet] FL10 INT LIN

Region	Number	HP X-CV	X-Mean
ALL	2499	1.77	506
FL10@4.0	2477	1.77	510