

Institution: IRB

Protocol :Alignment Blue Red Violet_ALIGN.pro

Listmode Replay: New Protocol

Analysis Date: 08-Oct-2012, 08:55:03

Settings File: Alignment Blue Red Violet_ALIGN.pro, 11-Jun-2012, 09:17:01

Listmode File: Gallios FlowCheck 2012-10-08 001.LMD

Run Date: 08-Oct-12, 08:53:12

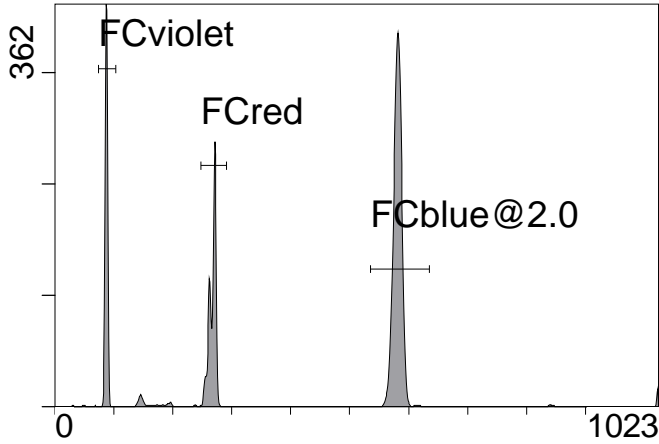
Sample ID: Gallios FlowCheck

User ID: duperray

Acquisition Time/Events: 31.1s / 10565 (PROTOCOL)

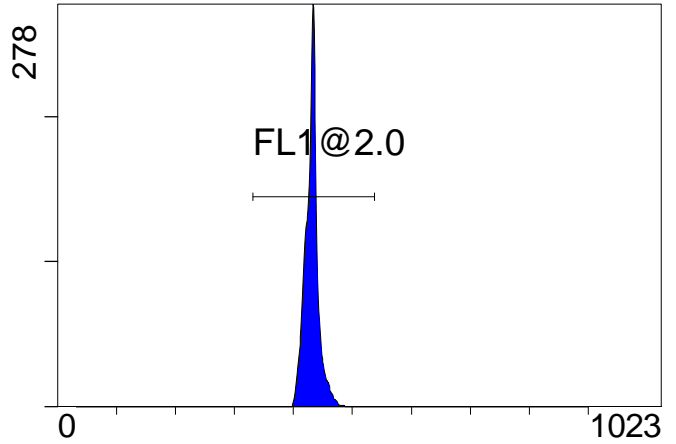
Instrument SN: AN11038 Software Version: Gallios 1.2

[Ungated] FS INT LIN



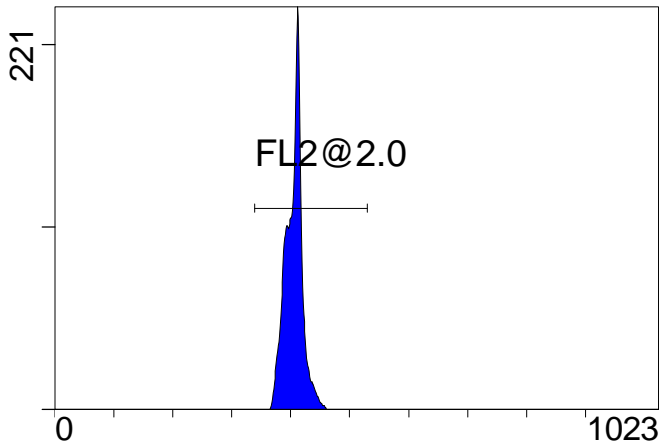
FS INT LIN

(3000) [FCblue@2.0] FL1 INT LIN



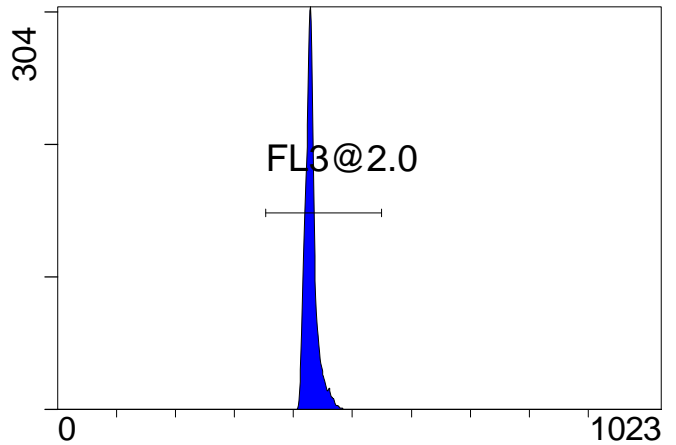
FL1 INT LIN

[FCblue@2.0] FL2 INT LIN



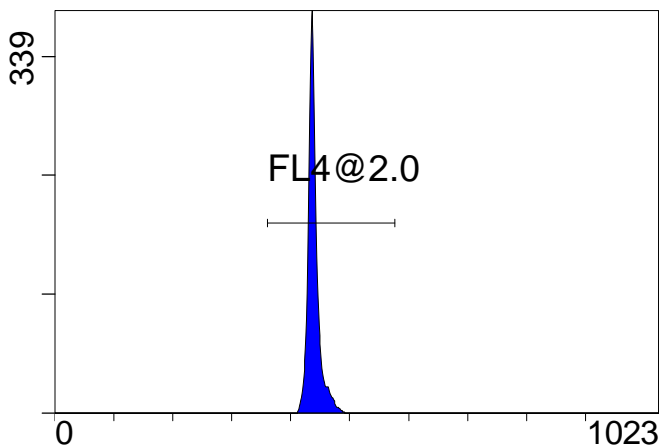
FL2 INT LIN

[FCblue@2.0] FL3 INT LIN



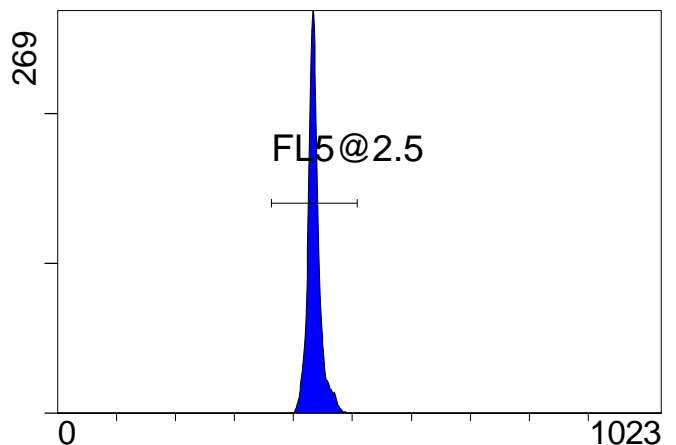
FL3 INT LIN

[FCblue@2.0] FL4 INT LIN



FL4 INT LIN

[FCblue@2.0] FL5 INT LIN



FL5 INT LIN

Institution: IRB

Protocol :Alignment Blue Red Violet_ALIGN.pro

Listmode Replay: New Protocol

Analysis Date: 08-Oct-2012, 08:55:03

Settings File: Alignment Blue Red Violet_ALIGN.pro, 11-Jun-2012, 09:17:01

Listmode File: Gallios FlowCheck 2012-10-08 001.LMD

Run Date: 08-Oct-12, 08:53:12

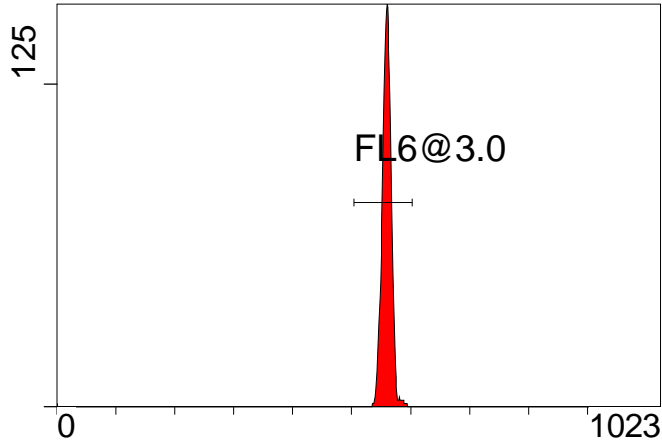
Sample ID: Gallios FlowCheck

User ID: duperray

Acquisition Time/Events: 31.1s / 10565 (PROTOCOL)

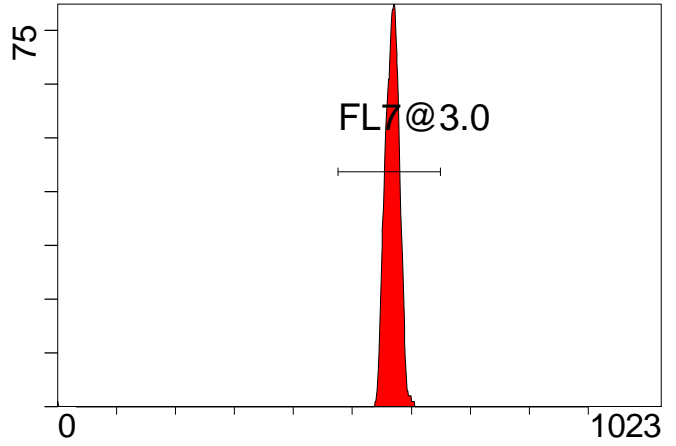
Instrument SN: AN11038 Software Version: Gallios 1.2

[FCred] FL6 INT LIN



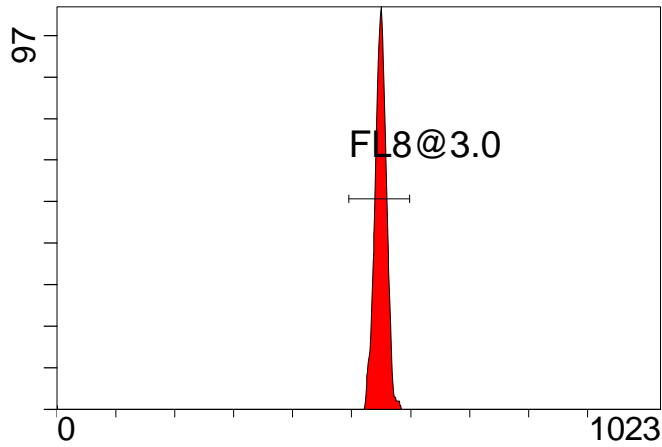
FL6 INT LIN

[FCred] FL7 INT LIN



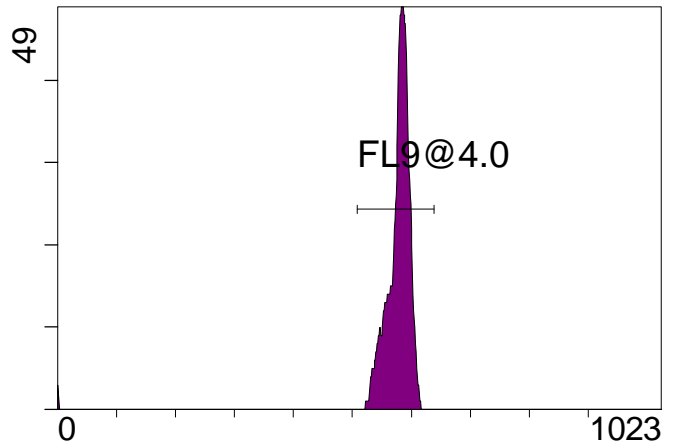
FL7 INT LIN

[FCred] FL8 INT LIN



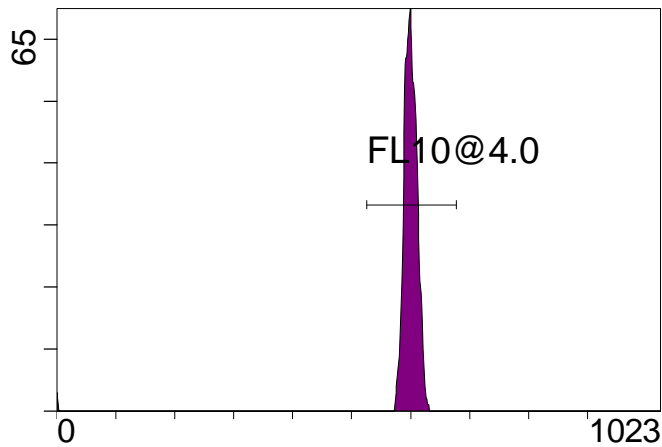
FL8 INT LIN

[FCviolet] FL9 INT LIN



FL9 INT LIN

[FCviolet] FL10 INT LIN



FL10 INT LIN

Statistical Analysis

PROGRAM INFORMATION

File:- Gallios FlowCheck 2012-10-08 001.LMD

Gate:- FCblue@2.0 [FCblue@2.0]

Compensation:-

Region	Number	X-Mean	X-HPCV
ALL	5696	436	1.44
ALL	5696	439	1.14
ALL	5696	430	1.28
ALL	5696	405	1.16
ALL	5696	431	1.16
FL1@2.0	5692	431	1.16
FL2@2.0	5688	406	1.16
FL3@2.0	5690	430	1.28
FL4@2.0	5689	439	1.14
FL5@2.5	5683	436	1.44

File:- Gallios FlowCheck 2012-10-08 001.LMD

Gate:- FCred [FCred]

Compensation:-

Region	Number	X-Mean	X-HPCV
ALL	2380	558	1.12
ALL	2380	566	1.84
ALL	2380	547	1.35
FL6@3.0	2359	560	1.12
FL7@3.0	2368	568	1.84
FL8@3.0	2356	549	1.35

File:- Gallios FlowCheck 2012-10-08 001.LMD

Gate:- FCviolet [FCviolet]

Compensation:-

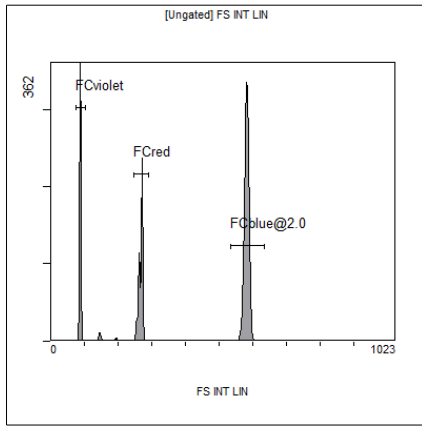
Region	Number	X-Mean	X-HPCV
ALL	1862	572	1.47
ALL	1862	595	1.64
FL10@4.0	1843	600	1.64
FL9@4.0	1842	578	1.47

File:- Gallios FlowCheck 2012-10-08 001.LMD

Gate:- Ungated

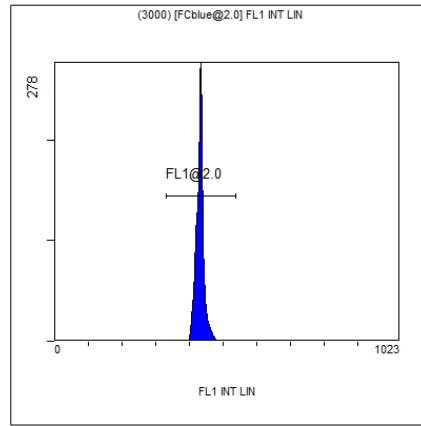
Compensation:-

Region	Number	X-Mean	X-HPCV
ALL	10565	411	1.26
FCblue@2.0	5696	581	1.04
FCred	2380	267	0.63
FCviolet	1862	87.3	1.26



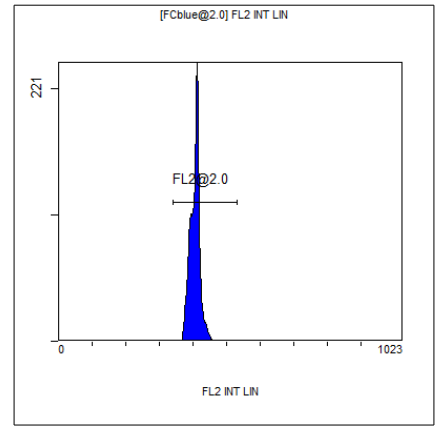
[Ungated] FS INT LIN

Region	Number	HP X-CV	X-Mean
ALL	10565	1.26	411
FCblue@2.0	5696	1.04	581
FCred	2380	0.63	267
FCviolet	1862	1.26	87.3



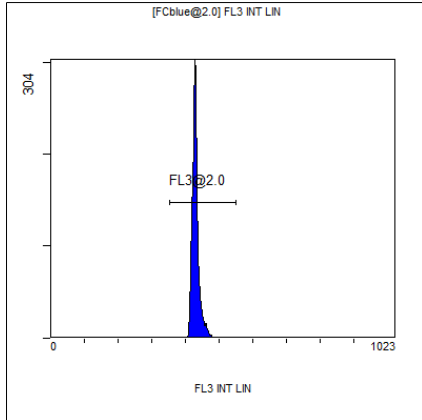
(3000) [FCblue@2.0] FL1 INT LIN

Region	Number	HP X-CV	X-Mean
ALL	5696	1.16	431
FL1@2.0	5692	1.16	431



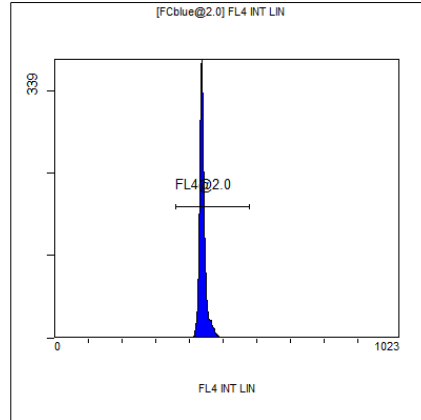
[FCblue@2.0] FL2 INT LIN

Region	Number	HP X-CV	X-Mean
ALL	5696	1.16	405
FL2@2.0	5688	1.16	406



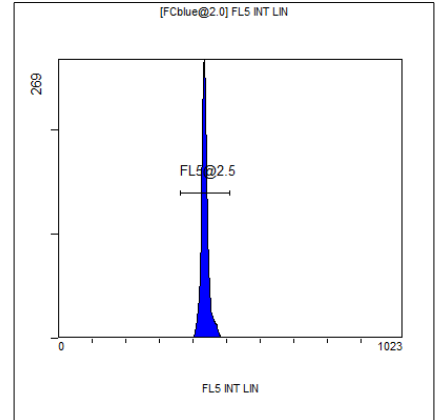
[FCblue@2.0] FL3 INT LIN

Region	Number	HP X-CV	X-Mean
ALL	5696	1.28	430
FL3@2.0	5690	1.28	430



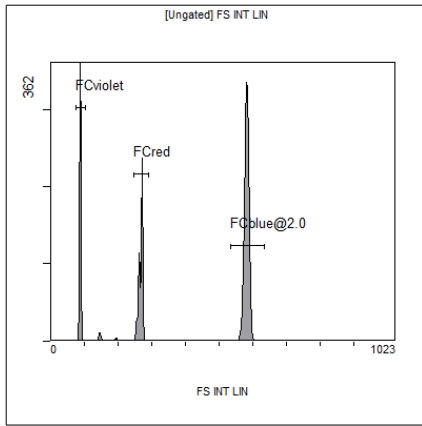
[FCblue@2.0] FL4 INT LIN

Region	Number	HP X-CV	X-Mean
ALL	5696	1.14	439
FL4@2.0	5689	1.14	439



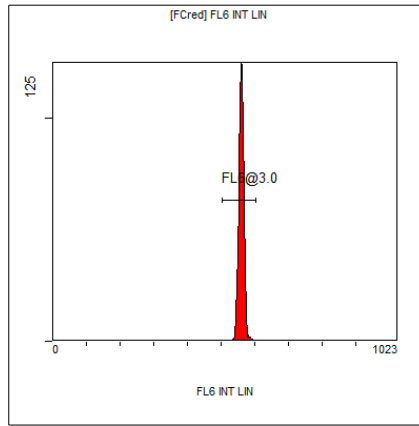
[FCblue@2.0] FL5 INT LIN

Region	Number	HP X-CV	X-Mean
ALL	5696	1.44	436
FL5@2.5	5683	1.44	436



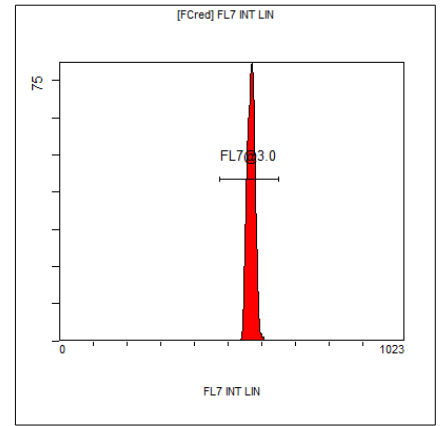
[Ungated] FS INT LIN

Region	Number	HP X-CV	X-Mean
ALL	10565	1.26	411
FCblue@2.0	5696	1.04	581
FCred	2380	0.63	267
FCviolet	1862	1.26	87.3



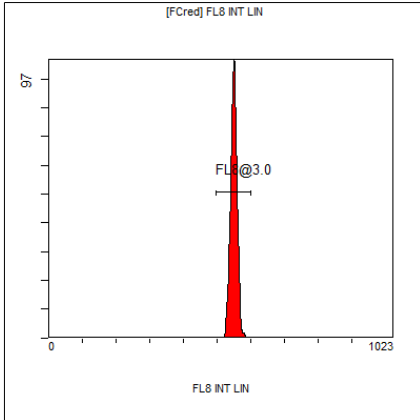
[FCred] FL6 INT LIN

Region	Number	HP X-CV	X-Mean
ALL	2380	1.12	558
FL6@3.0	2359	1.12	560



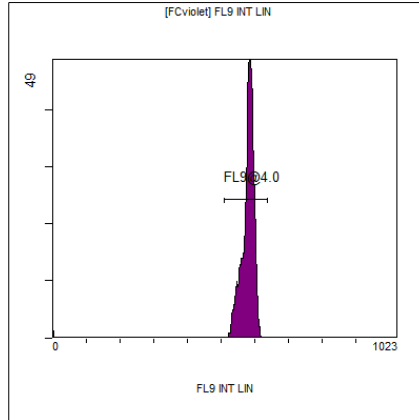
[FCred] FL7 INT LIN

Region	Number	HP X-CV	X-Mean
ALL	2380	1.84	566
FL7@3.0	2368	1.84	568



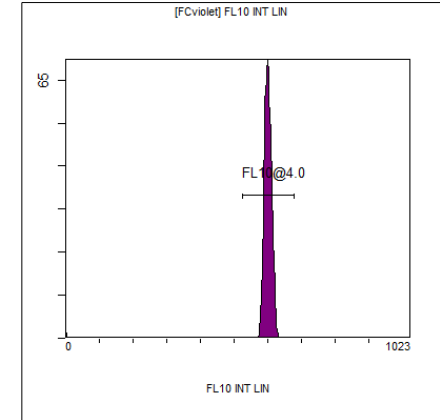
[FCred] FL8 INT LIN

Region	Number	HP X-CV	X-Mean
ALL	2380	1.35	547
FL8@3.0	2356	1.35	549



[FCviolet] FL9 INT LIN

Region	Number	HP X-CV	X-Mean
ALL	1862	1.47	572
FL9@4.0	1842	1.47	578



[FCviolet] FL10 INT LIN

Region	Number	HP X-CV	X-Mean
ALL	1862	1.64	595
FL10@4.0	1843	1.64	600