

Institution: IRB

Protocol :Alignment Blue Red Violet_ALIGN.pro

Listmode Replay: Runtime Protocol

Analysis Date: 22-Oct-2012, 09:08:00

Settings File: Alignment Blue Red Violet_ALIGN.pro, 22-Oct-2012, 09:06:56

Listmode File: Gallios FlowCheck 2012-10-22 001.LMD

Run Date: 22-Oct-12, 09:06:24

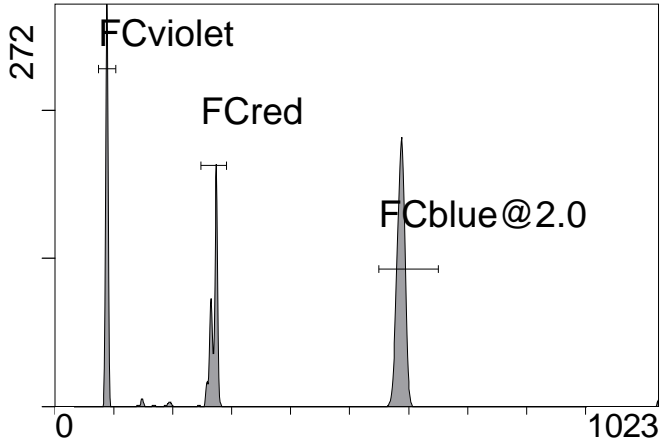
Sample ID: Gallios FlowCheck

User ID: duperray

Acquisition Time/Events: 23.9s / 6117 (PROTOCOL)

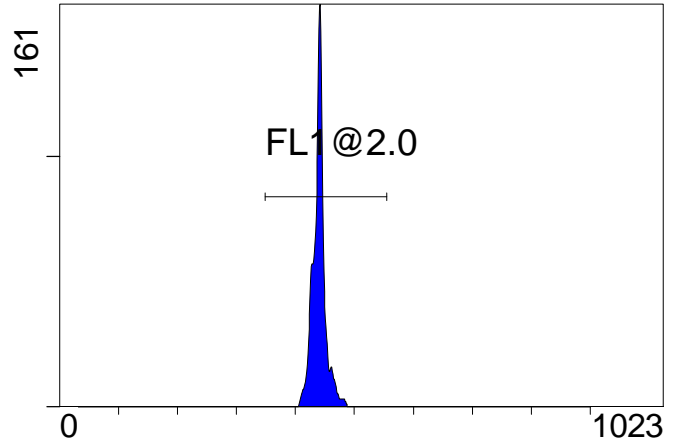
Instrument SN: AN11038 Software Version: Gallios 1.2

[Ungated] FS INT LIN



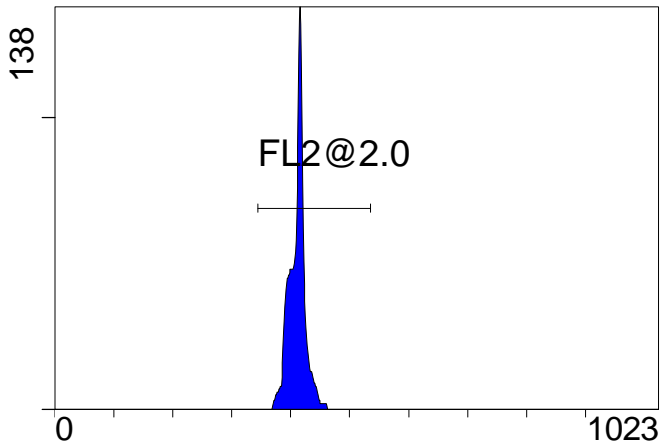
FS INT LIN

(3000) [FCblue@2.0] FL1 INT LIN



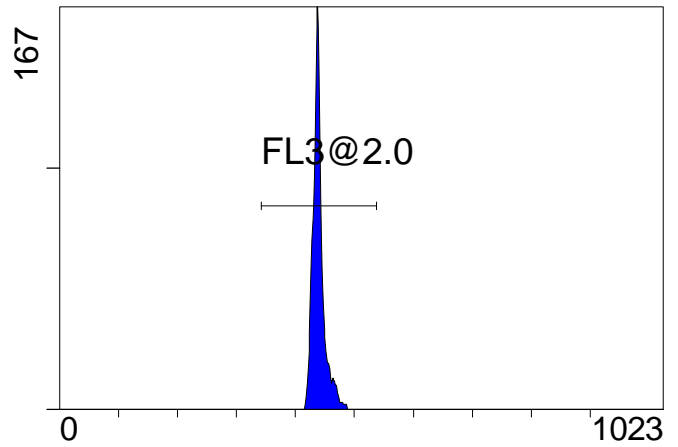
FL1 INT LIN

[FCblue@2.0] FL2 INT LIN



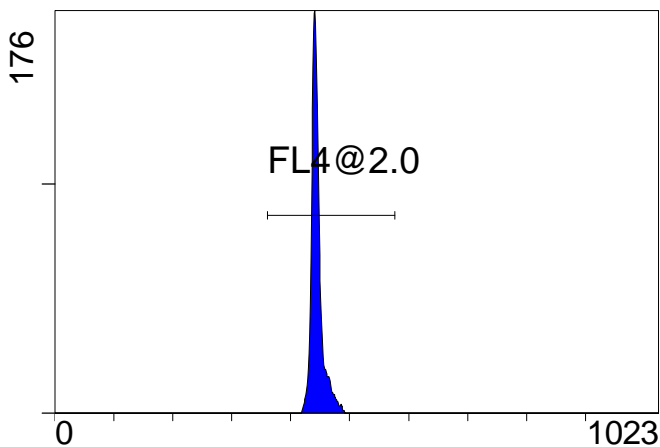
FL2 INT LIN

[FCblue@2.0] FL3 INT LIN



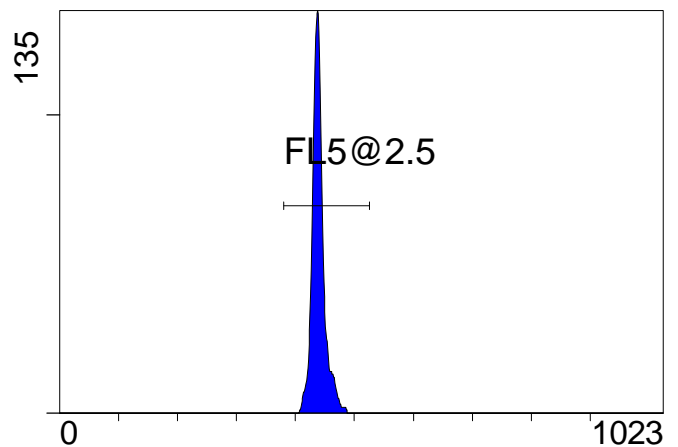
FL3 INT LIN

[FCblue@2.0] FL4 INT LIN



FL4 INT LIN

[FCblue@2.0] FL5 INT LIN



FL5 INT LIN

Institution: IRB

Protocol :Alignment Blue Red Violet_ALIGN.pro

Listmode Replay: Runtime Protocol

Analysis Date: 22-Oct-2012, 09:08:00

Settings File: Alignment Blue Red Violet_ALIGN.pro, 22-Oct-2012, 09:06:56

Listmode File: Gallios FlowCheck 2012-10-22 001.LMD

Run Date: 22-Oct-12, 09:06:24

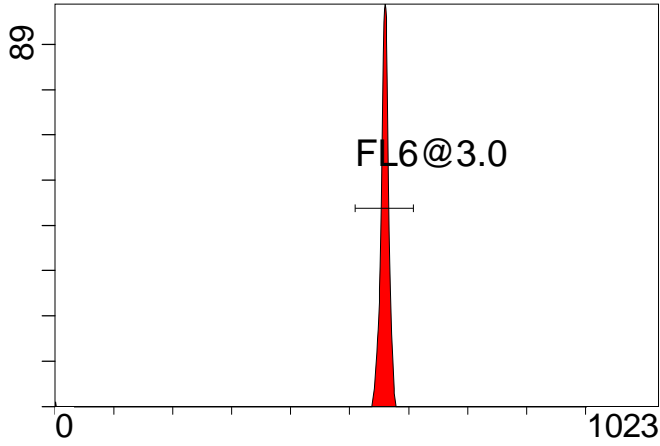
Sample ID: Gallios FlowCheck

User ID: duperray

Acquisition Time/Events: 23.9s / 6117 (PROTOCOL)

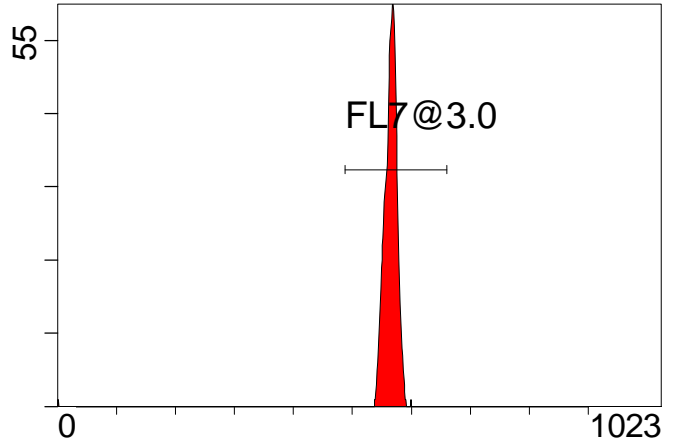
Instrument SN: AN11038 Software Version: Gallios 1.2

[FCred] FL6 INT LIN



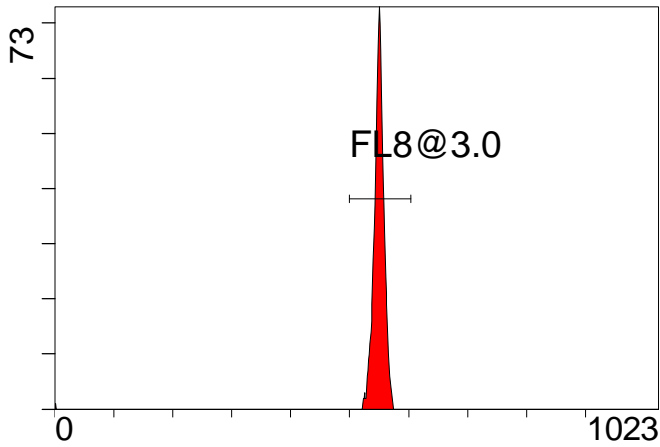
FL6 INT LIN

[FCred] FL7 INT LIN



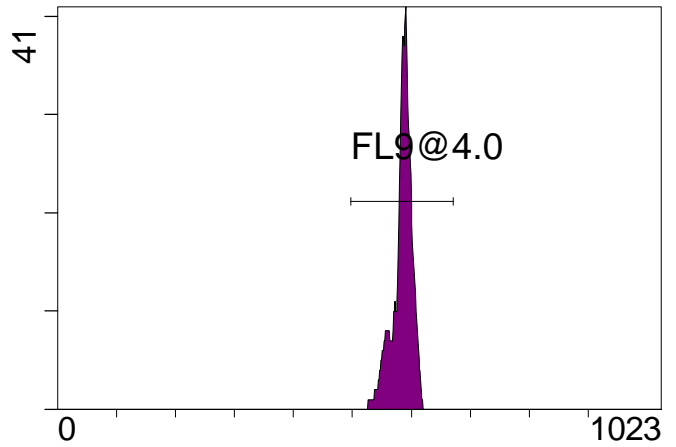
FL7 INT LIN

[FCred] FL8 INT LIN



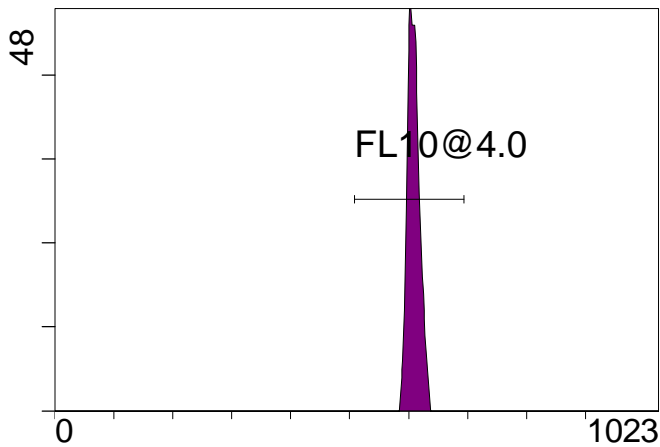
FL8 INT LIN

[FCviolet] FL9 INT LIN



FL9 INT LIN

[FCviolet] FL10 INT LIN



FL10 INT LIN

Statistical Analysis

PROGRAM INFORMATION

File:- Gallios FlowCheck 2012-10-22 001.LMD

Gate:- FCblue@2.0 [FCblue@2.0]

Compensation:-

Region	Number	X-Mean	X-HPCV
ALL	3000	441	0.80
ALL	3000	440	1.57
ALL	3000	445	1.07
ALL	3000	440	1.01
ALL	3000	411	0.84
FL1@2.0	2999	441	0.80
FL2@2.0	2997	411	0.84
FL3@2.0	2999	440	1.01
FL4@2.0	2997	445	1.07
FL5@2.5	2996	440	1.57

File:- Gallios FlowCheck 2012-10-22 001.LMD

Gate:- FCred [FCred]

Compensation:-

Region	Number	X-Mean	X-HPCV
ALL	1475	545	0.95
ALL	1475	560	1.15
ALL	1475	555	0.87
FL6@3.0	1458	560	0.87
FL7@3.0	1461	565	1.15
FL8@3.0	1455	550	0.95

File:- Gallios FlowCheck 2012-10-22 001.LMD

Gate:- FCviolet [FCviolet]

Compensation:-

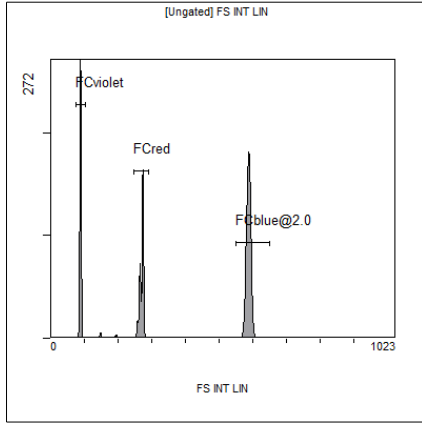
Region	Number	X-Mean	X-HPCV
ALL	1314	608	1.25
ALL	1314	583	1.31
FL10@4.0	1312	609	1.25
FL9@4.0	1312	583	1.31

File:- Gallios FlowCheck 2012-10-22 001.LMD

Gate:- Ungated

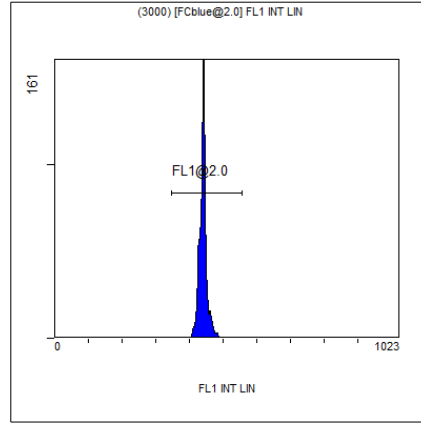
Compensation:-

Region	Number	X-Mean	X-HPCV
ALL	6117	390	1.10
FCblue@2.0	3000	587	1.03
FCred	1475	270	0.48
FCviolet	1314	88.1	1.10



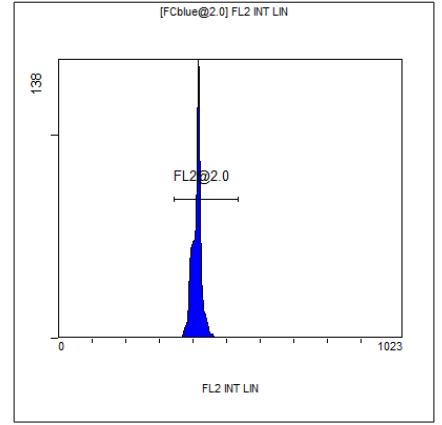
[Ungated] FS INT LIN

Region	Number	HP	X-CV	X-Mean
ALL	6117	1.10	390	
FCblue@2.0	3000	1.03	587	
FCred	1475	0.48	270	
FCviolet	1314	1.10	88.1	



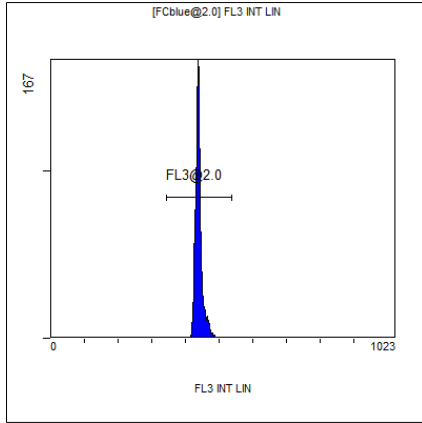
(3000) [FCblue@2.0] FL1 INT LIN

Region	Number	HP	X-CV	X-Mean
ALL	3000	0.80	441	
FL1@2.0	2999	0.80	441	



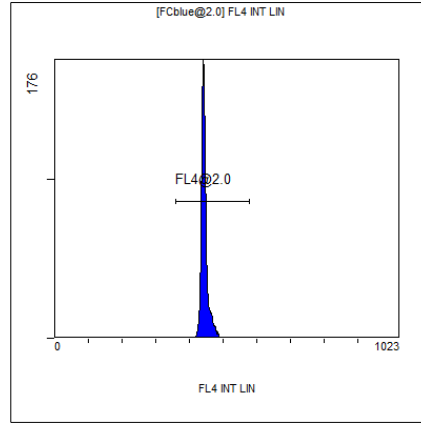
[FCblue@2.0] FL2 INT LIN

Region	Number	HP	X-CV	X-Mean
ALL	3000	0.84	411	
FL2@2.0	2997	0.84	411	



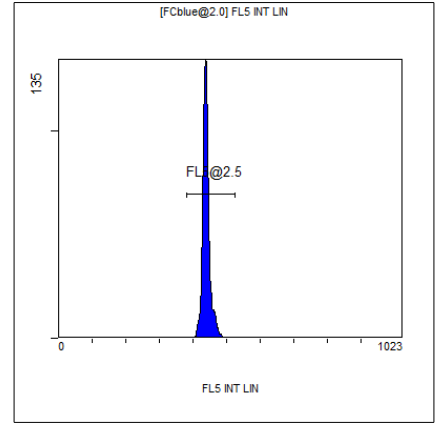
[FCblue@2.0] FL3 INT LIN

Region	Number	HP	X-CV	X-Mean
ALL	3000	1.01	440	
FL3@2.0	2999	1.01	440	



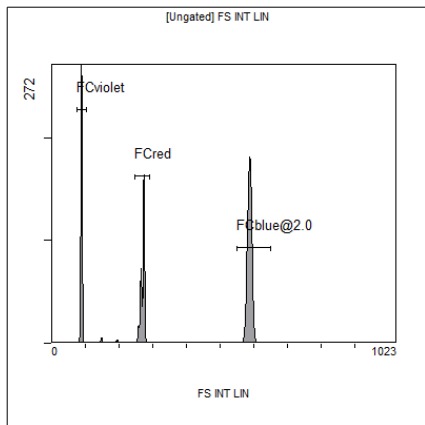
[FCblue@2.0] FL4 INT LIN

Region	Number	HP	X-CV	X-Mean
ALL	3000	1.07	445	
FL4@2.0	2997	1.07	445	



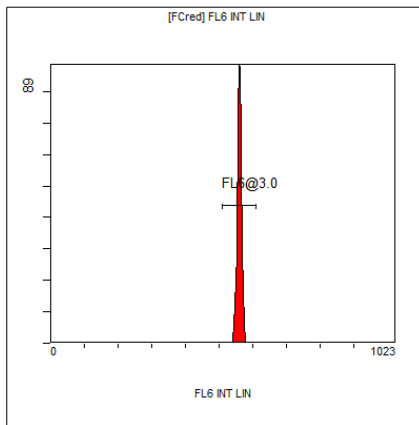
[FCblue@2.0] FL5 INT LIN

Region	Number	HP	X-CV	X-Mean
ALL	3000	1.57	440	
FL5@2.5	2996	1.57	440	



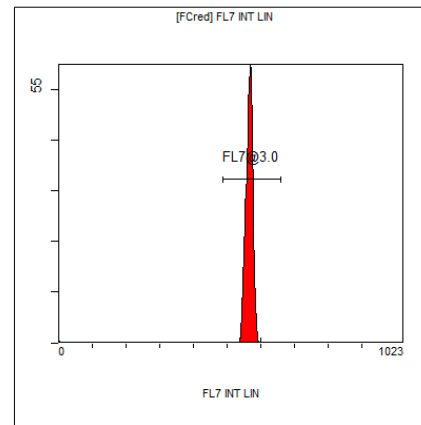
[Ungated] FS INT LIN

Region	Number	HP X-CV	X-Mean
ALL	6117	1.10	390
FCblue@2.0	3000	1.03	587
FCred	1475	0.48	270
FCviolet	1314	1.10	88.1



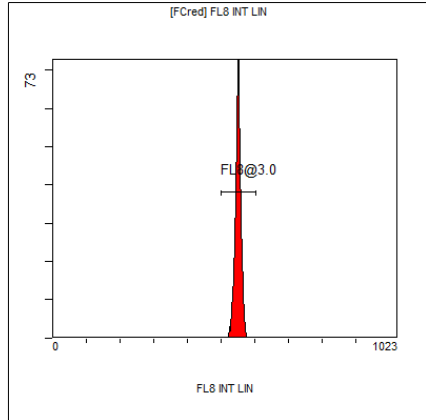
[FCred] FL6 INT LIN

Region	Number	HP X-CV	X-Mean
ALL	1475	0.87	555
FL6@3.0	1458	0.87	560



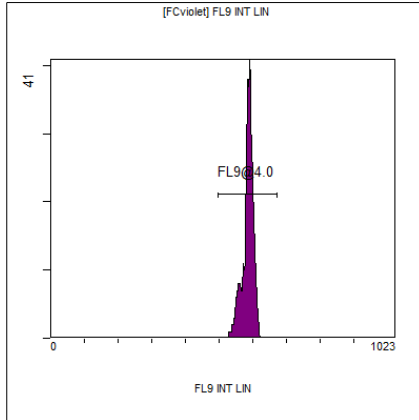
[FCred] FL7 INT LIN

Region	Number	HP X-CV	X-Mean
ALL	1475	1.15	560
FL7@3.0	1461	1.15	565



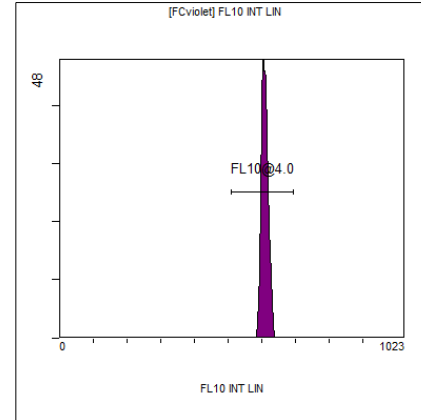
[FCred] FL8 INT LIN

Region	Number	HP X-CV	X-Mean
ALL	1475	0.95	545
FL8@3.0	1455	0.95	550



[FCviolet] FL9 INT LIN

Region	Number	HP X-CV	X-Mean
ALL	1314	1.31	583
FL9@4.0	1312	1.31	583



[FCviolet] FL10 INT LIN

Region	Number	HP X-CV	X-Mean
ALL	1314	1.25	608
FL10@4.0	1312	1.25	609