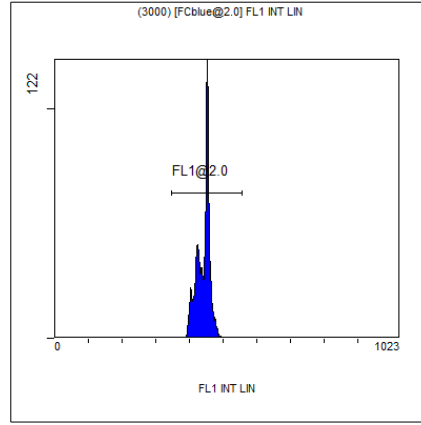


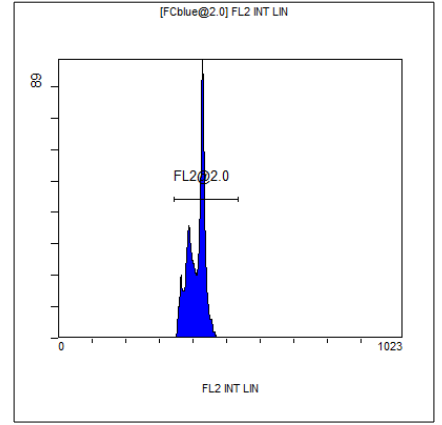
[Ungated] FS INT LIN

Region	Number	HP X-CV	X-Mean
ALL	6009	1.03	396
FCblue@2.0	3000	1.10	595
FCred	1391	0.98	271
FCviolet	1330	1.03	88.6



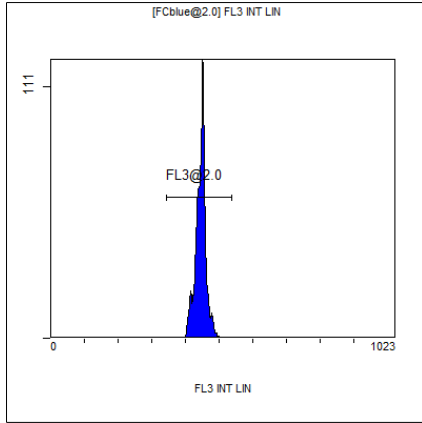
(3000) [FCblue@2.0] FL1 INT LIN

Region	Number	HP X-CV	X-Mean
ALL	3000	0.75	441
FL1@2.0	2997	0.75	441



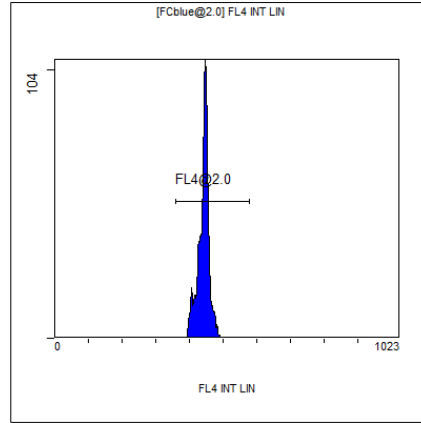
[FCblue@2.0] FL2 INT LIN

Region	Number	HP X-CV	X-Mean
ALL	3000	1.02	410
FL2@2.0	2994	1.02	410



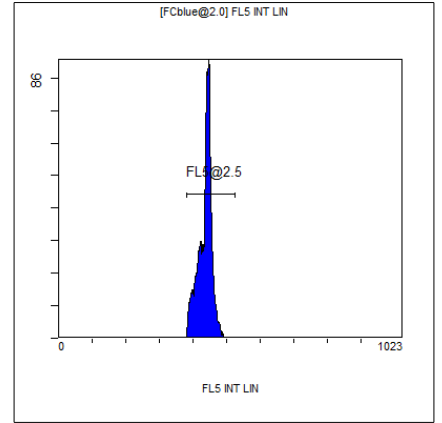
[FCblue@2.0] FL3 INT LIN

Region	Number	HP X-CV	X-Mean
ALL	3000	1.01	445
FL3@2.0	2996	1.01	446



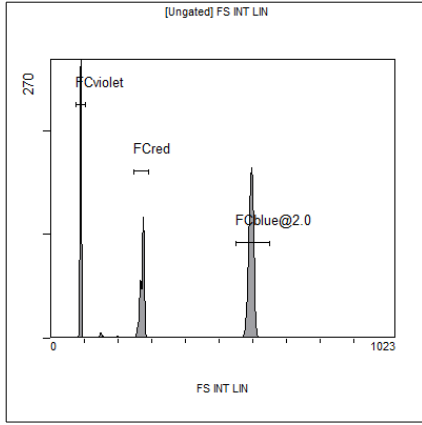
[FCblue@2.0] FL4 INT LIN

Region	Number	HP X-CV	X-Mean
ALL	3000	1.47	442
FL4@2.0	2995	1.47	442



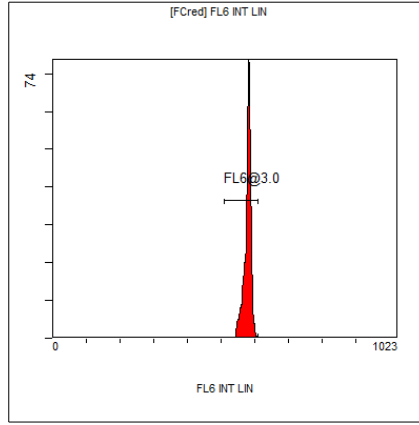
[FCblue@2.0] FL5 INT LIN

Region	Number	HP X-CV	X-Mean
ALL	3000	1.62	436
FL5@2.5	2988	1.62	436



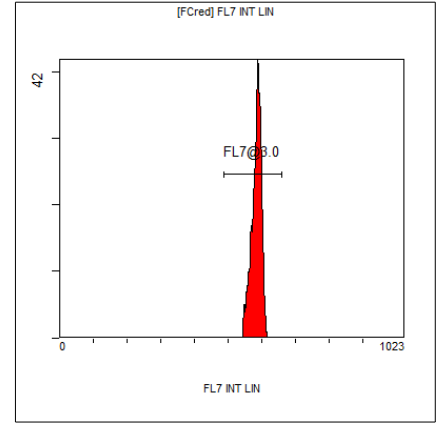
[Ungated] FS INT LIN

Region	Number	HP	X-CV	X-Mean
ALL	6009	1.03		396
FCblue@2.0	3000	1.10		595
FCred	1391	0.98		271
FCviolet	1330	1.03		88.6



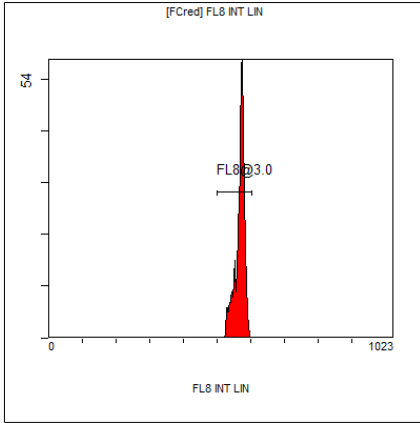
[FCred] FL6 INT LIN

Region	Number	HP	X-CV	X-Mean
ALL	1391	0.80		577
FL6@3.0	1371	0.80		578



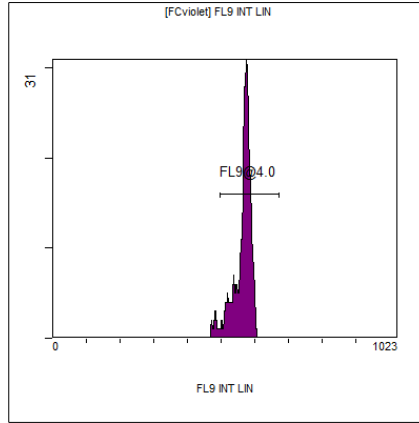
[FCred] FL7 INT LIN

Region	Number	HP	X-CV	X-Mean
ALL	1391	1.50		582
FL7@3.0	1387	1.50		583



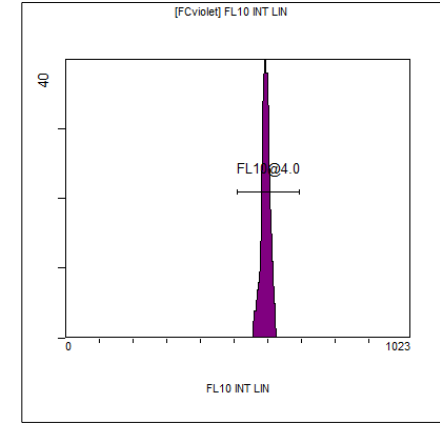
[FCred] FL8 INT LIN

Region	Number	HP	X-CV	X-Mean
ALL	1391	0.73		566
FL8@3.0	1372	0.73		566



[FCviolet] FL9 INT LIN

Region	Number	HP	X-CV	X-Mean
ALL	1330	1.33		557
FL9@4.0	1226	1.33		564



[FCviolet] FL10 INT LIN

Region	Number	HP	X-CV	X-Mean
ALL	1330	1.52		593
FL10@4.0	1325	1.52		592