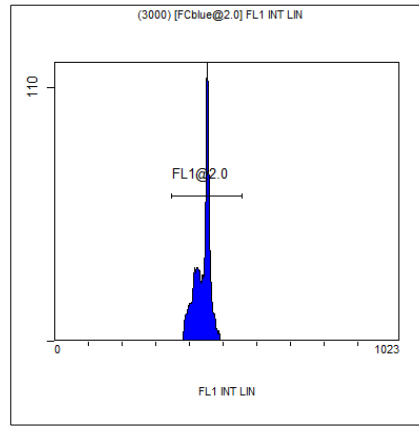


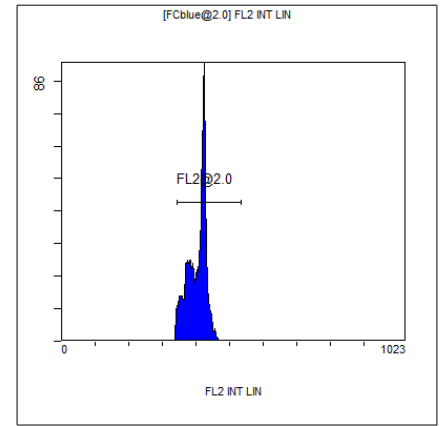
[Ungated] FS INT LIN

Region	Number	HP	X-CV	X-Mean
ALL	6586	1.46		380
FCblue@2.0	3000	1.14		600
FCred	1606	0.84		274
FCviolet	1632	1.46		90



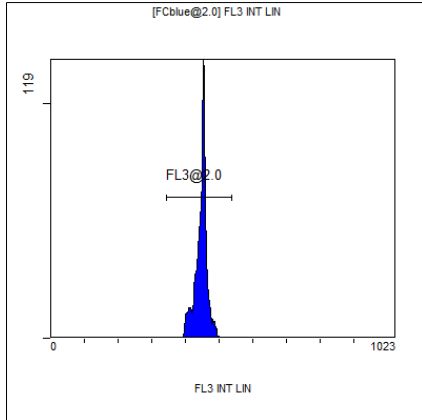
(3000) [FCblue@2.0] FL1 INT LIN

Region	Number	HP	X-CV	X-Mean
ALL	3000	0.86		440
FL1@2.0	2997	0.86		439



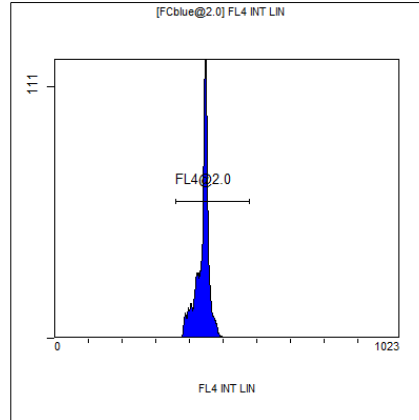
[FCblue@2.0] FL2 INT LIN

Region	Number	HP	X-CV	X-Mean
ALL	3000	1.22		403
FL2@2.0	2924	1.22		404



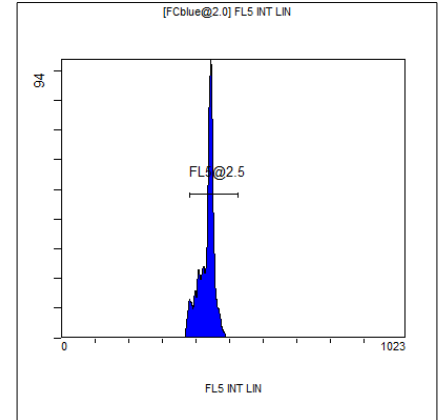
[FCblue@2.0] FL3 INT LIN

Region	Number	HP	X-CV	X-Mean
ALL	3000	0.79		447
FL3@2.0	2996	0.79		447



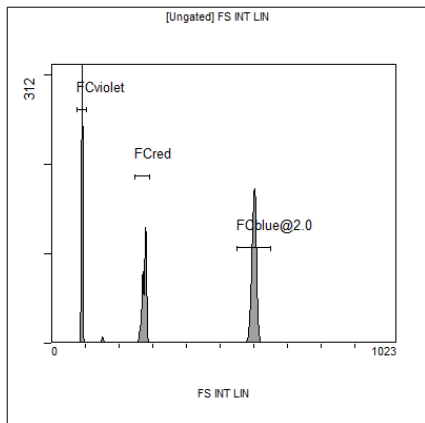
[FCblue@2.0] FL4 INT LIN

Region	Number	HP	X-CV	X-Mean
ALL	3000	1.16		440
FL4@2.0	2995	1.16		439



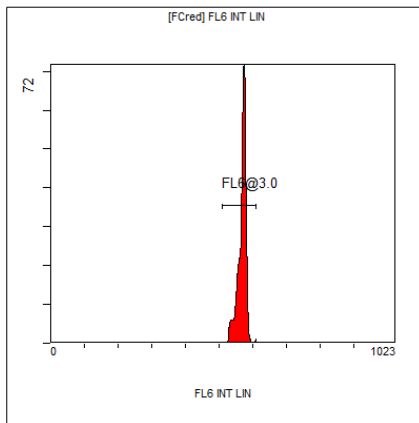
[FCblue@2.0] FL5 INT LIN

Region	Number	HP	X-CV	X-Mean
ALL	3000	1.39		432
FL5@2.5	2888	1.39		434



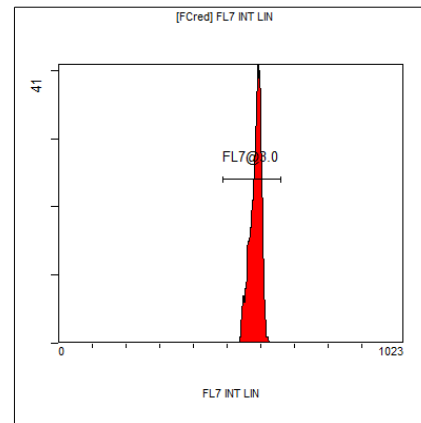
[Ungated] FS INT LIN

Region	Number	HP X-CV	X-Mean
ALL	6586	1.46	380
FCblue@2.0	3000	1.14	600
FCred	1606	0.84	274
FCviolet	1632	1.46	90



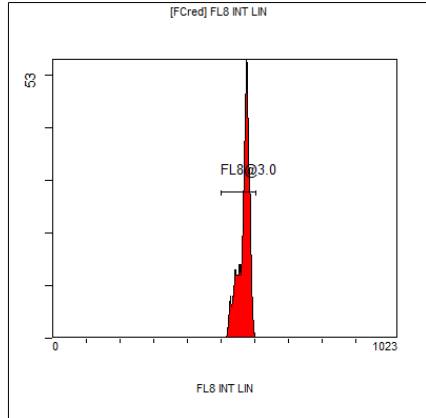
[FCred] FL6 INT LIN

Region	Number	HP X-CV	X-Mean
ALL	1606	0.92	564
FL6@3.0	1581	0.92	567



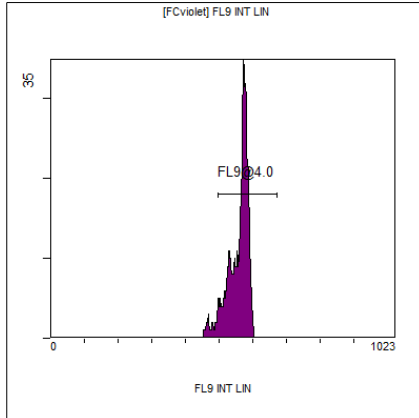
[FCred] FL7 INT LIN

Region	Number	HP X-CV	X-Mean
ALL	1606	0.56	579
FL7@3.0	1593	0.56	584



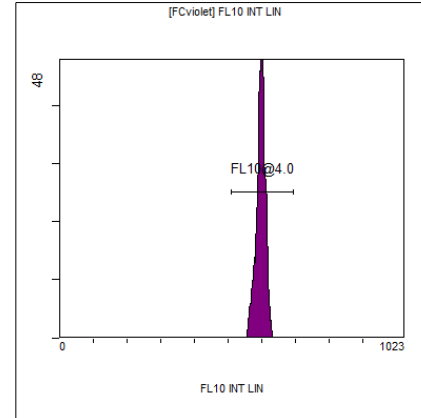
[FCred] FL8 INT LIN

Region	Number	HP X-CV	X-Mean
ALL	1606	1.13	563
FL8@3.0	1567	1.13	566



[FCviolet] FL9 INT LIN

Region	Number	HP X-CV	X-Mean
ALL	1632	1.06	551
FL9@4.0	1462	1.06	560



[FCviolet] FL10 INT LIN

Region	Number	HP X-CV	X-Mean
ALL	1632	1.41	596
FL10@4.0	1624	1.41	596