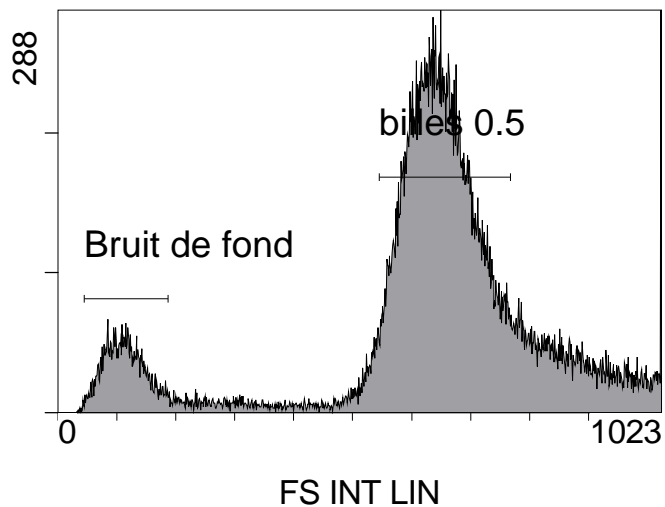


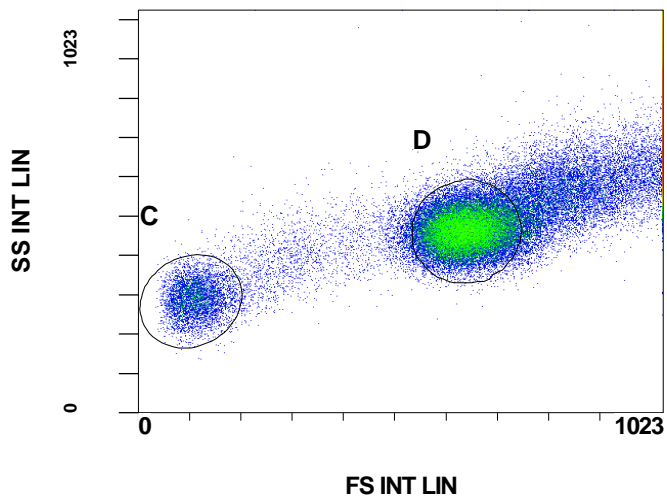
Institution: IRB
Protocol :Controle Billes 0.5u.PRO
Listmode Replay: New Protocol
Analysis Date: 17-Dec-2012, 09:12:10
Settings File: Controle Billes 0.5u.PRO, 06-Jan-2012, 14:56:18
Listmode File: Validation Taille 2012-12-17 001.LMD

Run Date: 17-Dec-12, 09:10:45
Sample ID: Validation Taille
User ID: duperray
Acquisition Time/Events: 3.0s / 100000 (PROTOCOL)
Instrument SN: AN11038 Software Version: Gallios 1.2

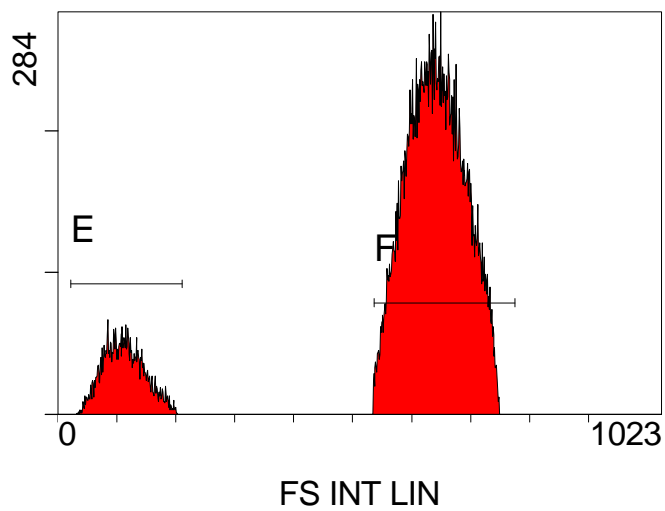
[Ungated] FS INT LIN



[Ungated] FS INT LIN/SS INT LIN



[C OR D] FS INT LIN



Statistical Analysis

PROGRAM INFORMATION

File:- Validation Taille 2012-12-17 001.LMD

Gate:- New Gate 1 [C OR D]

Compensation:-

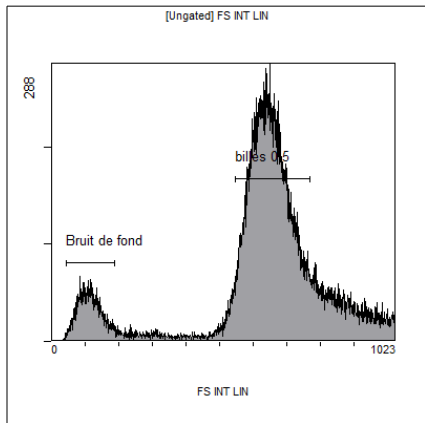
| Region | Number | %Gated | X-Mean | X-HPCV |
|--------|--------|--------|--------|--------|
| ALL | 38251 | 100.00 | 576 | 7.87 |
| E | 4713 | 12.32 | 113 | 24.79 |
| F | 33514 | 87.62 | 641 | 7.87 |

File:- Validation Taille 2012-12-17 001.LMD

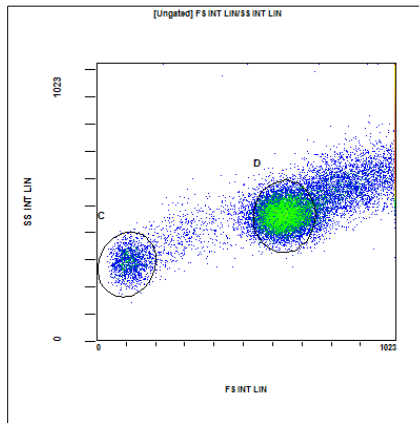
Gate:- Ungated

Compensation:-

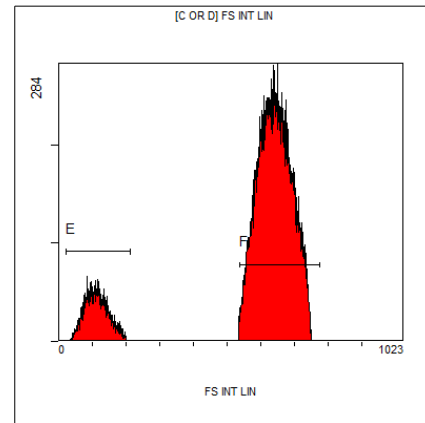
| Region | Number | %Gated | X-Mean | X-HPCV |
|---------------|--------|--------|--------|--------|
| ALL | 100000 | 100.00 | 809 | 0.00 |
| ALL | 100000 | 100.00 | 809 | 0.00 |
| billes 0.5 | 36403 | 36.40 | 650 | 7.88 |
| Bruit de fond | 4703 | 4.70 | 113 | 24.81 |
| C | 4713 | 4.71 | 113 | 24.79 |
| D | 33538 | 33.54 | 641 | 7.87 |



| [Ungated] FS INT LIN | | | | |
|----------------------|--------|--------|--------|---------|
| Region | Number | X-Mean | %Gated | HP X-CV |
| ALL | 100000 | 809 | 100.00 | 0.00 |
| billes 0.5 | 36403 | 650 | 36.40 | 7.88 |
| Bruit de fond | 4703 | 113 | 4.70 | 24.81 |



| [Ungated] FS INT LIN/SS INT LIN | | | | |
|---------------------------------|--------|--------|--------|---------|
| Region | Number | %Gated | X-Mean | HP X-CV |
| ALL | 100000 | 100.00 | 809 | 0.00 |
| C | 4713 | 4.71 | 113 | 24.79 |
| D | 33538 | 33.54 | 641 | 7.87 |



| [C OR D] FS INT LIN | | | | |
|---------------------|--------|--------|--------|---------|
| Region | Number | X-Mean | %Gated | HP X-CV |
| ALL | 38251 | 576 | 100.00 | 7.87 |
| E | 4713 | 113 | 12.32 | 24.79 |
| F | 33514 | 641 | 87.62 | 7.87 |

