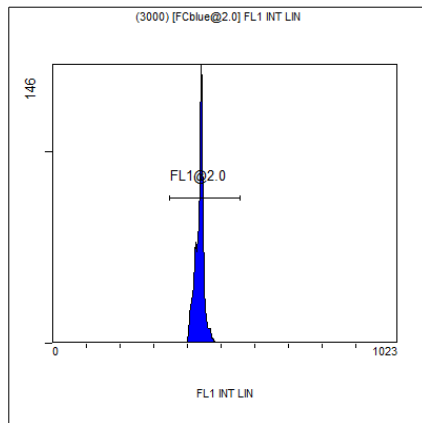


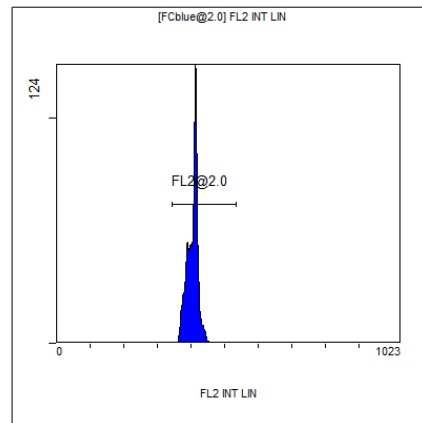
[Ungated] FS INT LIN

Region	Number	HP	X-CV	X-Mean
ALL	6105	1.03		391
FCblue@2.0	3000	0.98		590
FCred	1489	0.53		271
FCviolet	1284	1.03		88.7



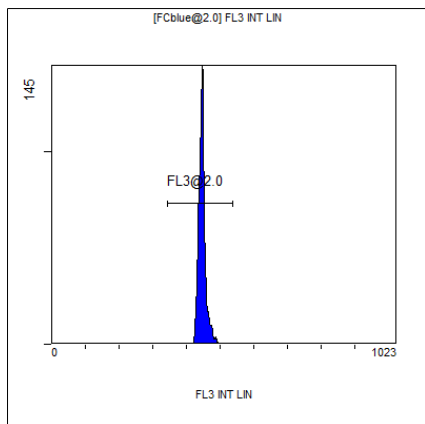
(3000) [FCblue@2.0] FL1 INT LIN

Region	Number	HP	X-CV	X-Mean
ALL	3000	0.82		436
FL1@2.0	2994	0.82		436



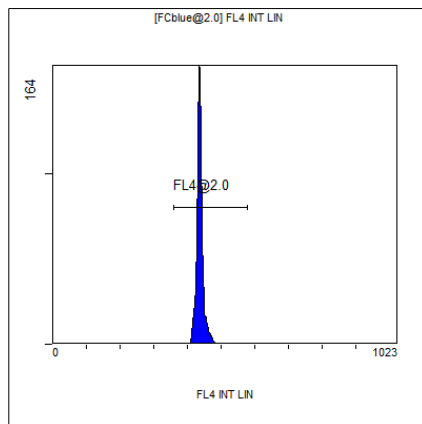
[FCblue@2.0] FL2 INT LIN

Region	Number	HP	X-CV	X-Mean
ALL	3000	0.79		404
FL2@2.0	2994	0.79		405



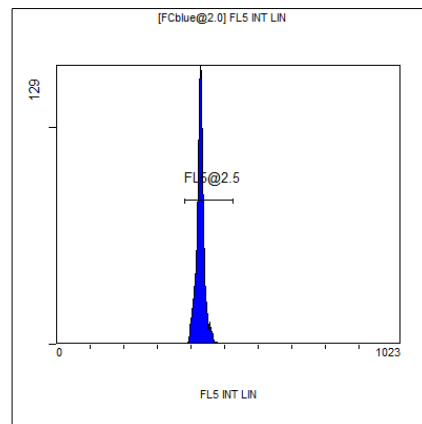
[FCblue@2.0] FL3 INT LIN

Region	Number	HP	X-CV	X-Mean
ALL	3000	1.22		447
FL3@2.0	2995	1.22		447



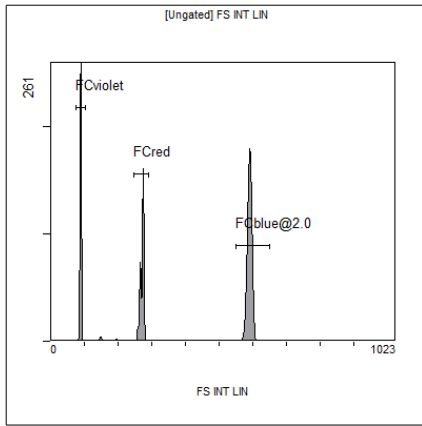
[FCblue@2.0] FL4 INT LIN

Region	Number	HP	X-CV	X-Mean
ALL	3000	1.13		437
FL4@2.0	2994	1.13		437



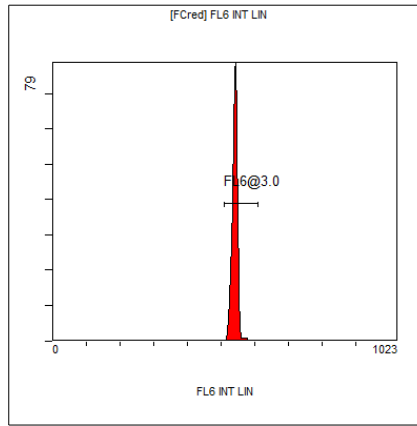
[FCblue@2.0] FL5 INT LIN

Region	Number	HP	X-CV	X-Mean
ALL	3000	1.58		427
FL5@2.5	2994	1.58		428



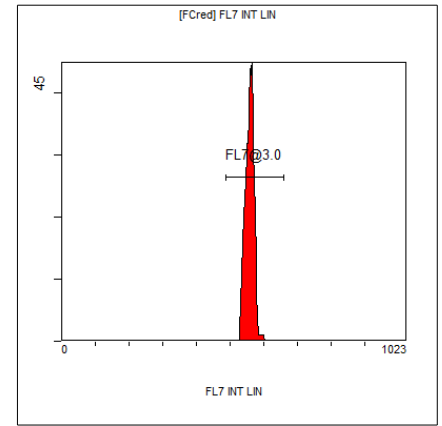
[Ungated] FS INT LIN

Region	Number	HP	X-CV	X-Mean
ALL	6105	1.03		391
FCblue@2.0	3000	0.98		590
FCred	1489	0.53		271
FCviolet	1284	1.03		88.7



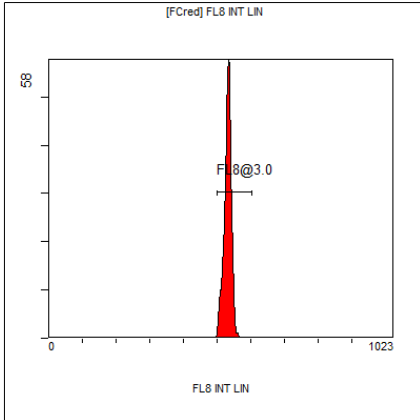
[FCred] FL6 INT LIN

Region	Number	HP	X-CV	X-Mean
ALL	1489	0.99		539
FL6@3.0	1481	0.99		540



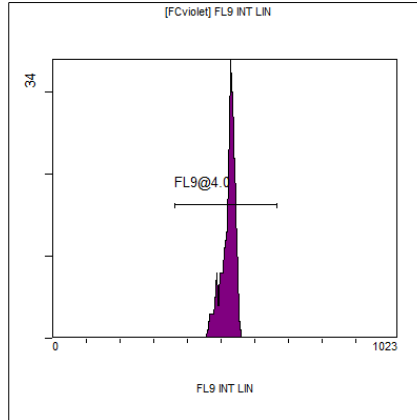
[FCred] FL7 INT LIN

Region	Number	HP	X-CV	X-Mean
ALL	1489	1.66		556
FL7@3.0	1484	1.66		558



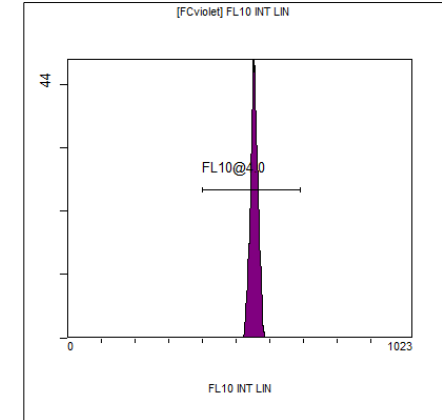
[FCred] FL8 INT LIN

Region	Number	HP	X-CV	X-Mean
ALL	1489	1.28		529
FL8@3.0	1471	1.28		531



[FCviolet] FL9 INT LIN

Region	Number	HP	X-CV	X-Mean
ALL	1284	1.24		515
FL9@4.0	1270	1.24		519



[FCviolet] FL10 INT LIN

Region	Number	HP	X-CV	X-Mean
ALL	1284	1.12		550
FL10@4.0	1274	1.12		553