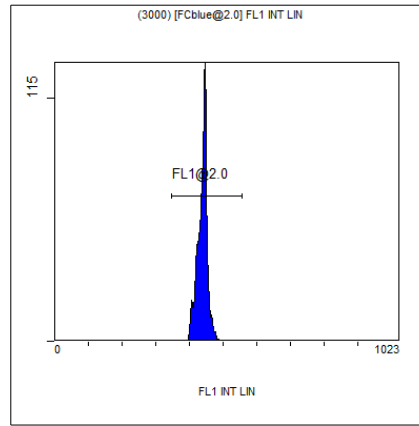


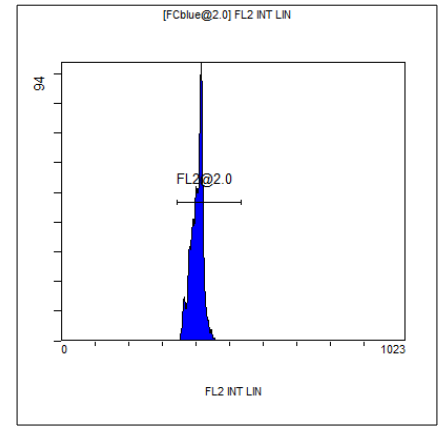
[Ungated] FS INT LIN

Region	Number	HP	X-CV	X-Mean
ALL	6486	1.21		378
FCblue@2.0	3000	1.02		595
FCred	1484	0.69		273
FCviolet	1532	1.21		89.4



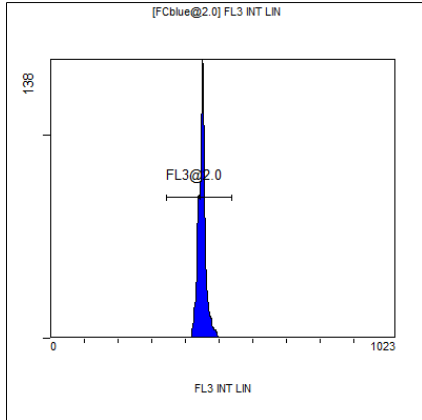
(3000) [FCblue@2.0] FL1 INT LIN

Region	Number	HP	X-CV	X-Mean
ALL	3000	1.30		439
FL1@2.0	2999	1.30		439



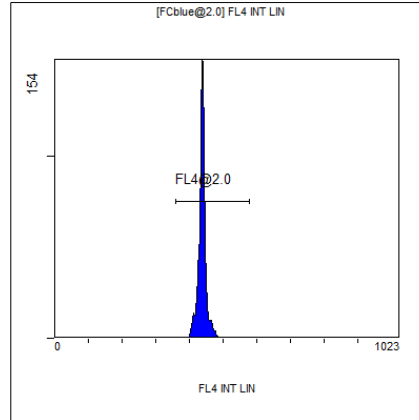
[FCblue@2.0] FL2 INT LIN

Region	Number	HP	X-CV	X-Mean
ALL	3000	1.13		403
FL2@2.0	2997	1.13		403



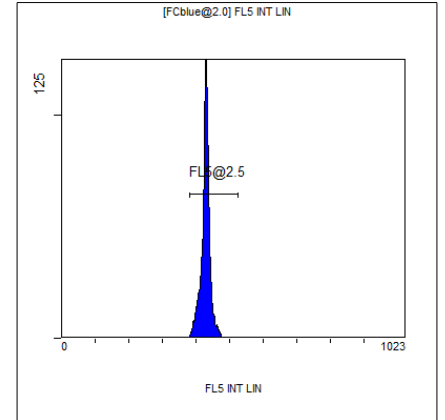
[FCblue@2.0] FL3 INT LIN

Region	Number	HP	X-CV	X-Mean
ALL	3000	0.98		450
FL3@2.0	3000	0.98		450



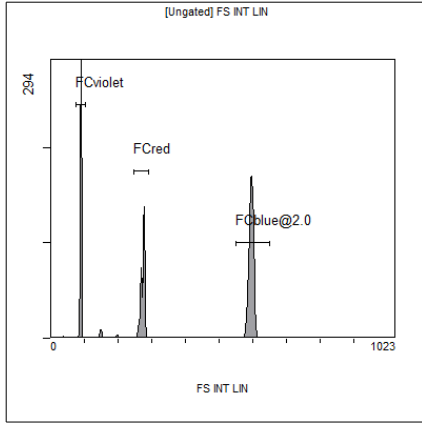
[FCblue@2.0] FL4 INT LIN

Region	Number	HP	X-CV	X-Mean
ALL	3000	1.05		438
FL4@2.0	2998	1.05		438



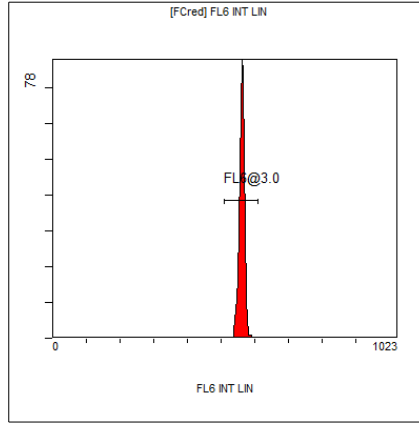
[FCblue@2.0] FL5 INT LIN

Region	Number	HP	X-CV	X-Mean
ALL	3000	1.51		428
FL5@2.5	2996	1.51		428



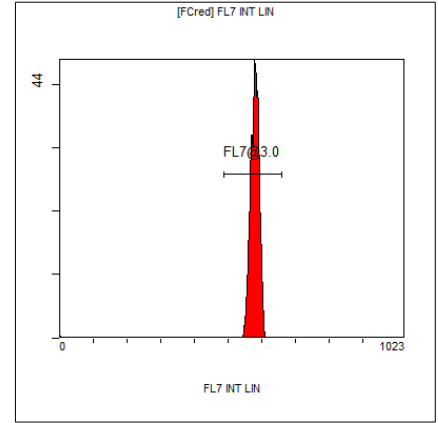
[Ungated] FS INT LIN

Region	Number	HP X-CV	X-Mean
ALL	6486	1.21	378
FCblue@2.0	3000	1.02	595
FCred	1484	0.69	273
FCviolet	1532	1.21	89.4



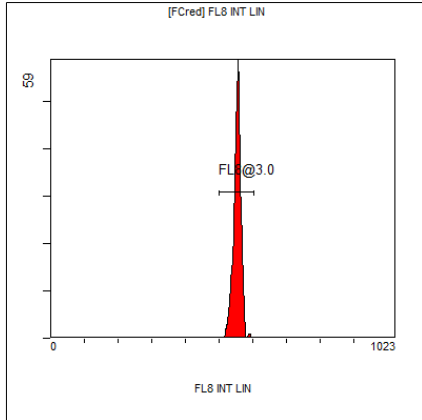
[FCred] FL6 INT LIN

Region	Number	HP X-CV	X-Mean
ALL	1484	0.79	556
FL6@3.0	1468	0.79	561



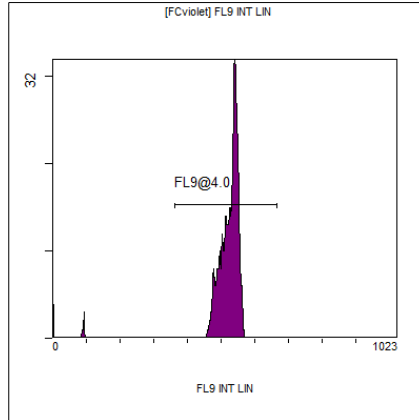
[FCred] FL7 INT LIN

Region	Number	HP X-CV	X-Mean
ALL	1484	1.28	573
FL7@3.0	1469	1.28	579



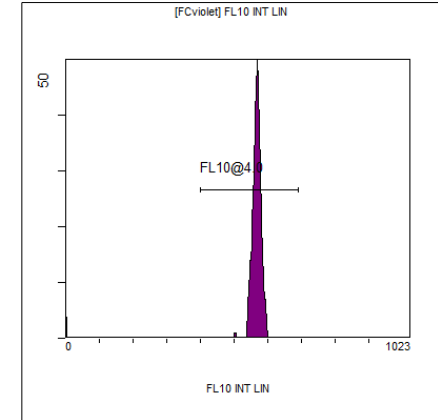
[FCred] FL8 INT LIN

Region	Number	HP X-CV	X-Mean
ALL	1484	1.28	548
FL8@3.0	1467	1.28	553



[FCviolet] FL9 INT LIN

Region	Number	HP X-CV	X-Mean
ALL	1532	1.26	499
FL9@4.0	1454	1.26	523



[FCviolet] FL10 INT LIN

Region	Number	HP X-CV	X-Mean
ALL	1532	1.19	552
FL10@4.0	1497	1.19	565