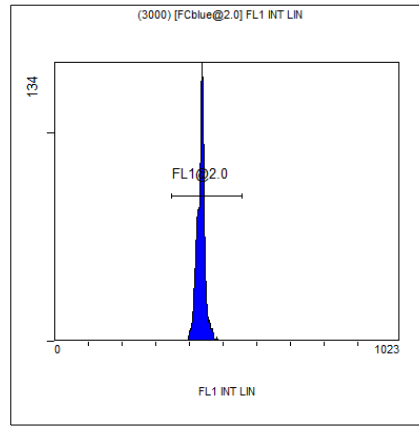


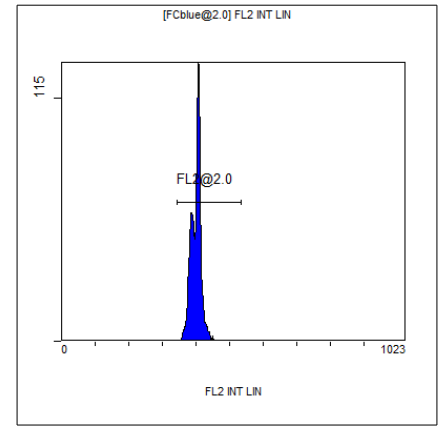
[Ungated] FS INT LIN

Region	Number	HP	X-CV	X-Mean
ALL	6472	1.16		375
FCblue@2.0	3000	1.16		586
FCred	1581	0.63		270
FCviolet	1520	1.16		88.4



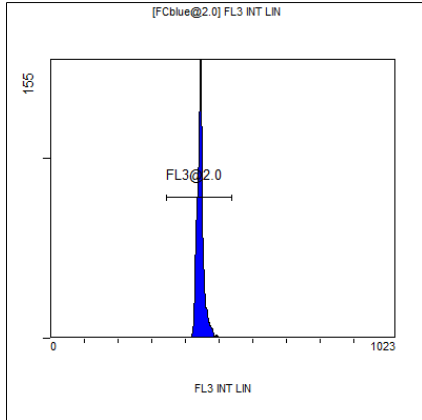
(3000) [FCblue@2.0] FL1 INT LIN

Region	Number	HP	X-CV	X-Mean
ALL	3000	1.04		434
FL1@2.0	2998	1.04		434



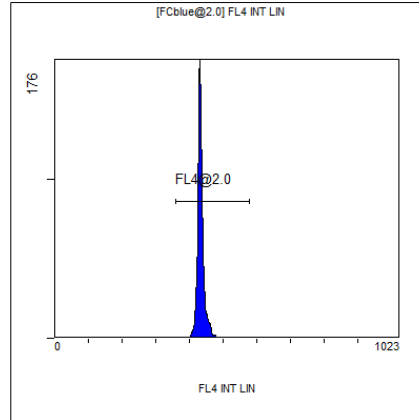
[FCblue@2.0] FL2 INT LIN

Region	Number	HP	X-CV	X-Mean
ALL	3000	1.11		400
FL2@2.0	2997	1.11		400



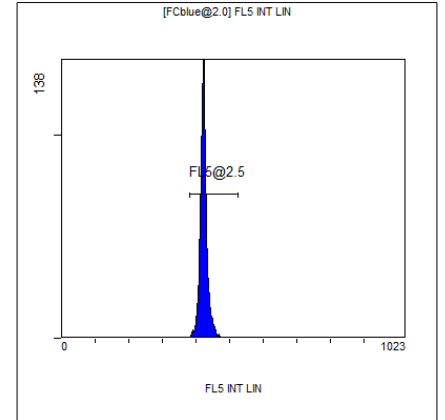
[FCblue@2.0] FL3 INT LIN

Region	Number	HP	X-CV	X-Mean
ALL	3000	1.14		445
FL3@2.0	2998	1.14		445



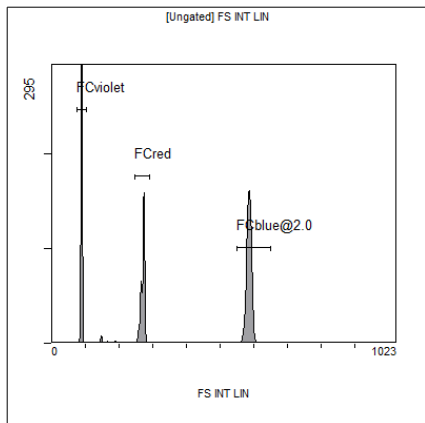
[FCblue@2.0] FL4 INT LIN

Region	Number	HP	X-CV	X-Mean
ALL	3000	0.97		434
FL4@2.0	2997	0.97		434



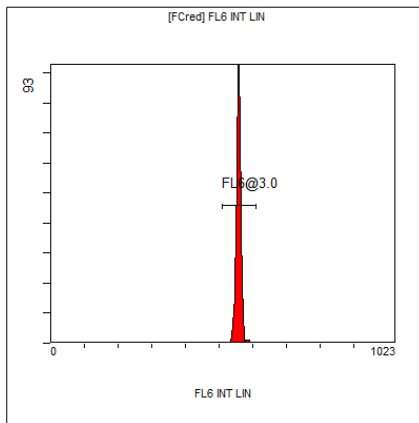
[FCblue@2.0] FL5 INT LIN

Region	Number	HP	X-CV	X-Mean
ALL	3000	1.41		423
FL5@2.5	2996	1.41		423



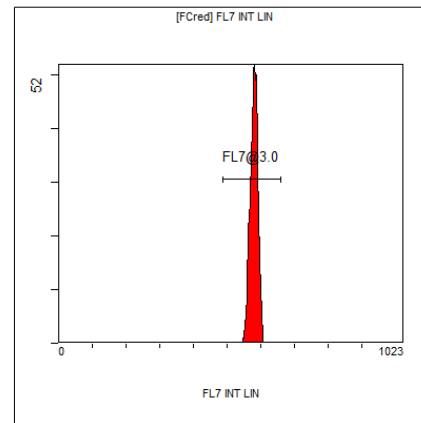
[Ungated] FS INT LIN

Region	Number	HP X-CV	X-Mean
ALL	6472	1.16	375
FCblue@2.0	3000	1.16	586
FCred	1581	0.63	270
FCviolet	1520	1.16	88.4



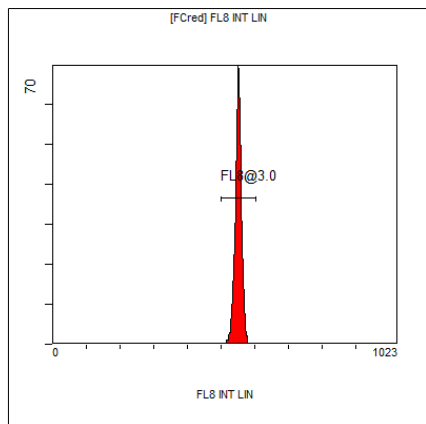
[FCred] FL6 INT LIN

Region	Number	HP X-CV	X-Mean
ALL	1581	0.97	554
FL6@3.0	1571	0.97	557



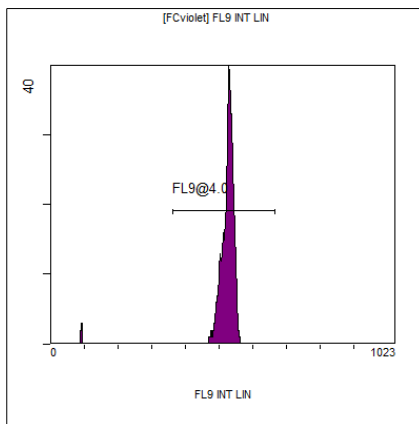
[FCred] FL7 INT LIN

Region	Number	HP X-CV	X-Mean
ALL	1581	1.14	576
FL7@3.0	1571	1.14	579



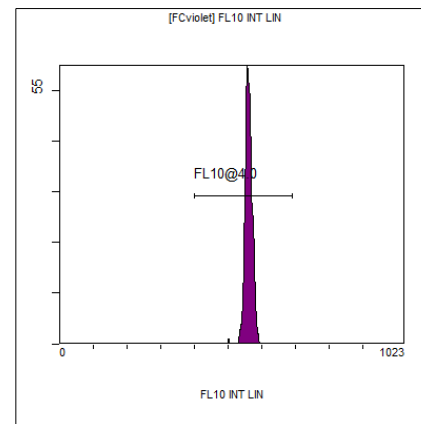
[FCred] FL8 INT LIN

Region	Number	HP X-CV	X-Mean
ALL	1581	0.92	547
FL8@3.0	1569	0.92	550



[FCviolet] FL9 INT LIN

Region	Number	HP X-CV	X-Mean
ALL	1520	1.25	509
FL9@4.0	1472	1.25	523



[FCviolet] FL10 INT LIN

Region	Number	HP X-CV	X-Mean
ALL	1520	1.27	556
FL10@4.0	1512	1.27	559