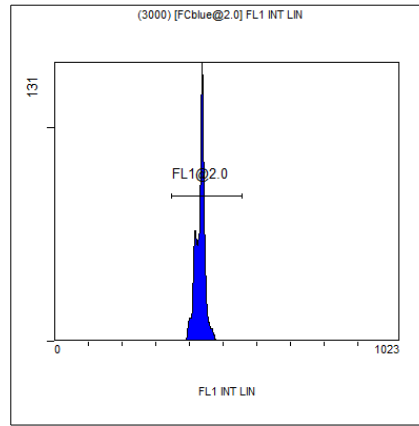


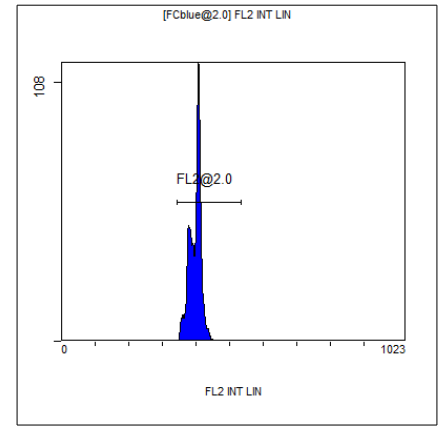
[Ungated] FS INT LIN

Region	Number	HP	X-CV	X-Mean
ALL	6474	1.31	380	
FCblue@2.0	3000	1.11	590	
FCred	1649	0.65	272	
FCviolet	1456	1.31	89	



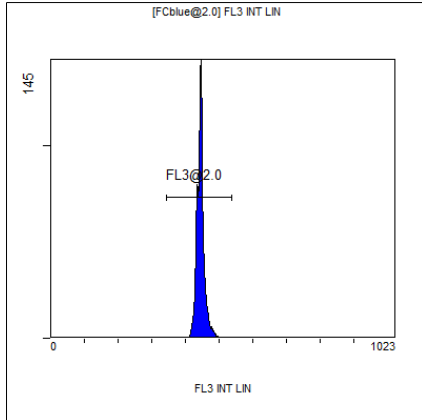
(3000) [FCblue@2.0] FL1 INT LIN

Region	Number	HP	X-CV	X-Mean
ALL	3000	0.84	432	
FL1@2.0	2998	0.84	432	



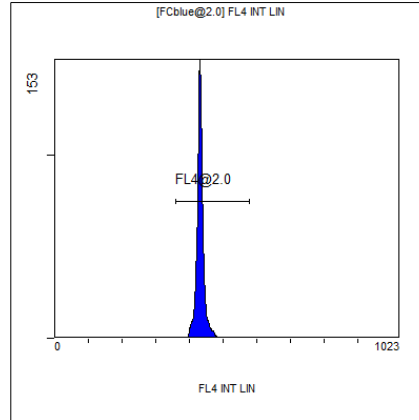
[FCblue@2.0] FL2 INT LIN

Region	Number	HP	X-CV	X-Mean
ALL	3000	1.19	398	
FL2@2.0	2995	1.19	398	



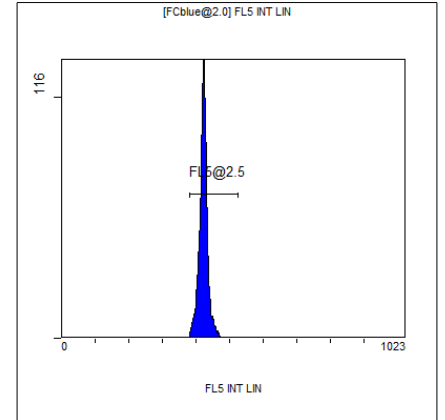
[FCblue@2.0] FL3 INT LIN

Region	Number	HP	X-CV	X-Mean
ALL	3000	0.85	445	
FL3@2.0	2998	0.85	445	



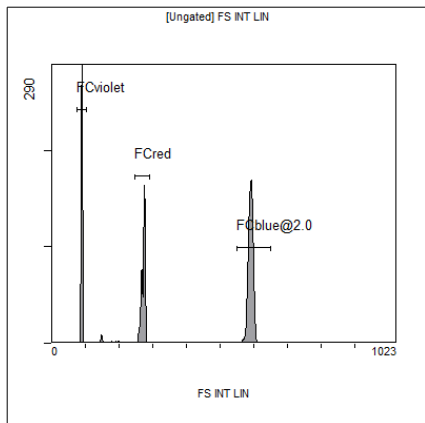
[FCblue@2.0] FL4 INT LIN

Region	Number	HP	X-CV	X-Mean
ALL	3000	1.13	432	
FL4@2.0	2995	1.13	432	



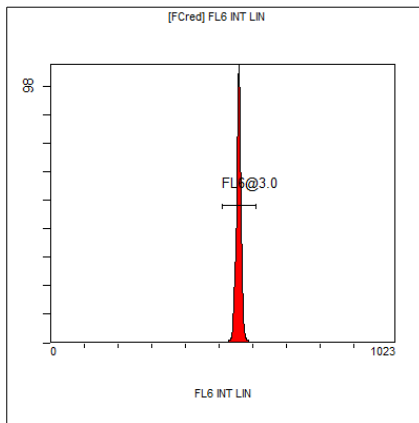
[FCblue@2.0] FL5 INT LIN

Region	Number	HP	X-CV	X-Mean
ALL	3000	1.78	422	
FL5@2.5	2984	1.78	422	



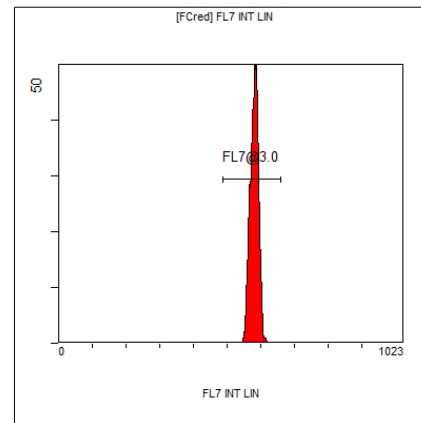
[Ungated] FS INT LIN

Region	Number	HP	X-CV	X-Mean
ALL	6474	1.31		380
FCblue@2.0	3000	1.11		590
FCred	1649	0.65		272
FCviolet	1456	1.31		89



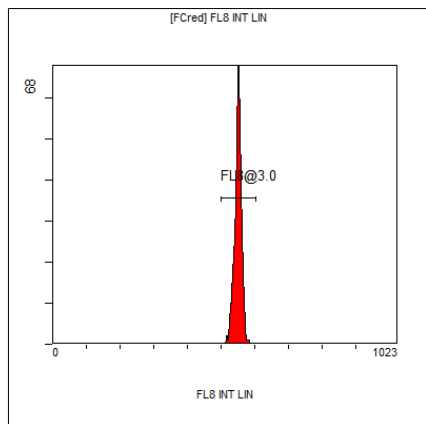
[FCred] FL6 INT LIN

Region	Number	HP	X-CV	X-Mean
ALL	1649	0.81		556
FL6@3.0	1638	0.81		558



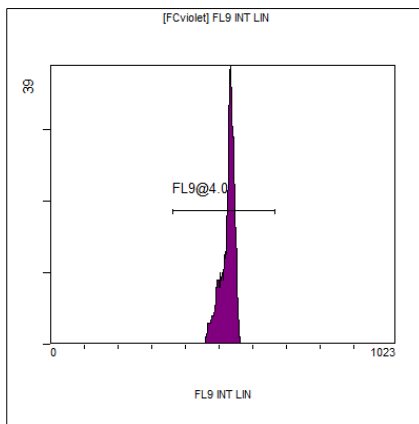
[FCred] FL7 INT LIN

Region	Number	HP	X-CV	X-Mean
ALL	1649	1.37		578
FL7@3.0	1642	1.37		580



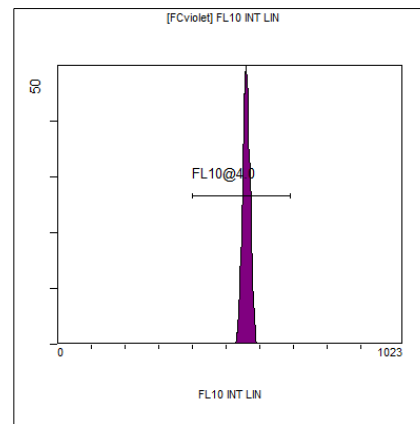
[FCred] FL8 INT LIN

Region	Number	HP	X-CV	X-Mean
ALL	1649	0.89		547
FL8@3.0	1637	0.89		550



[FCviolet] FL9 INT LIN

Region	Number	HP	X-CV	X-Mean
ALL	1456	1.37		519
FL9@4.0	1444	1.37		523



[FCviolet] FL10 INT LIN

Region	Number	HP	X-CV	X-Mean
ALL	1456	1.36		557
FL10@4.0	1449	1.36		559