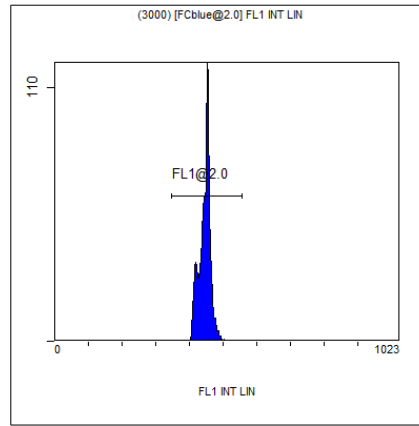


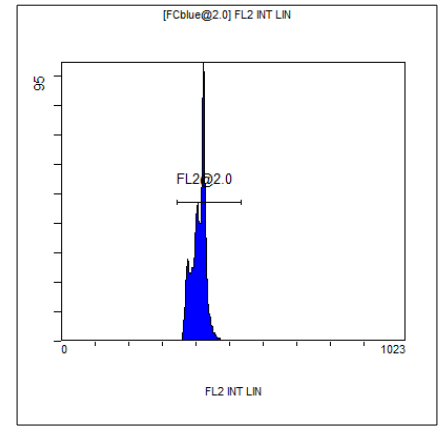
[Ungated] FS INT LIN

Region	Number	HP X-CV	X-Mean
ALL	6424	1.37	389
FCblue@2.0	3000	1.05	599
FCred	1534	0.69	275
FCviolet	1440	1.37	90.1



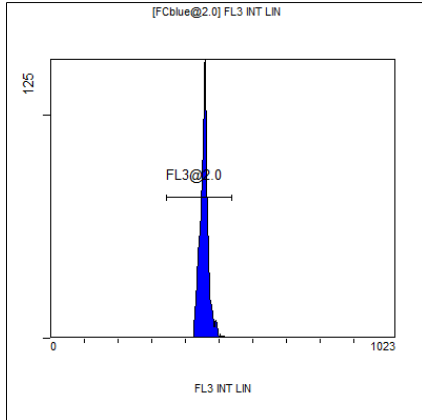
(3000) [FCblue@2.0] FL1 INT LIN

Region	Number	HP X-CV	X-Mean
ALL	3000	0.83	444
FL1@2.0	2990	0.83	446



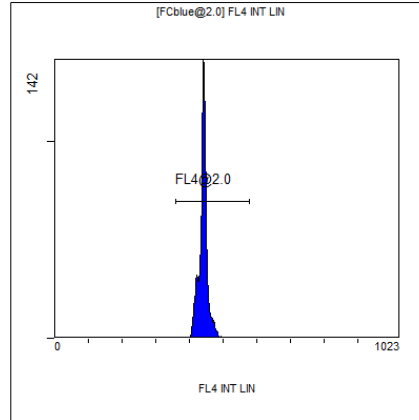
[FCblue@2.0] FL2 INT LIN

Region	Number	HP X-CV	X-Mean
ALL	3000	0.94	407
FL2@2.0	2990	0.94	408



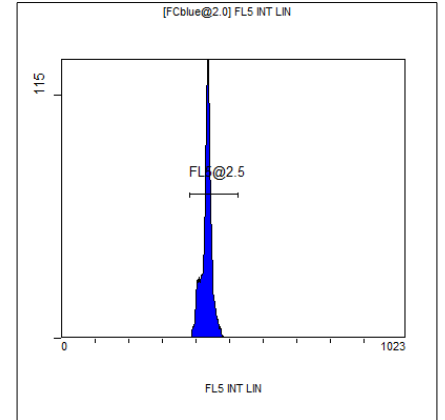
[FCblue@2.0] FL3 INT LIN

Region	Number	HP X-CV	X-Mean
ALL	3000	1.11	455
FL3@2.0	2987	1.11	456



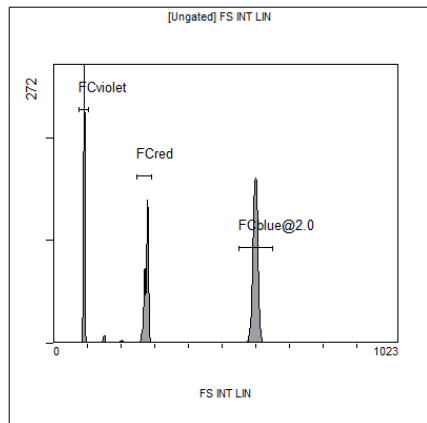
[FCblue@2.0] FL4 INT LIN

Region	Number	HP X-CV	X-Mean
ALL	3000	1.09	440
FL4@2.0	2990	1.09	441



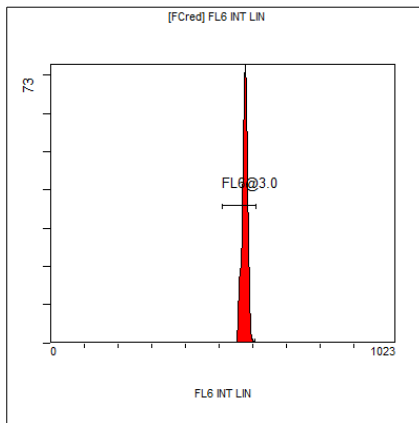
[FCblue@2.0] FL5 INT LIN

Region	Number	HP X-CV	X-Mean
ALL	3000	1.36	431
FL5@2.5	2989	1.36	432



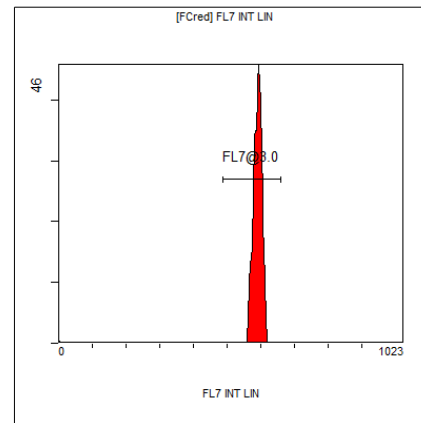
[Ungated] FS INT LIN

Region	Number	HP X-CV	X-Mean
ALL	6424	1.37	389
FCblue@2.0	3000	1.05	599
FCred	1534	0.69	275
FCviolet	1440	1.37	90.1



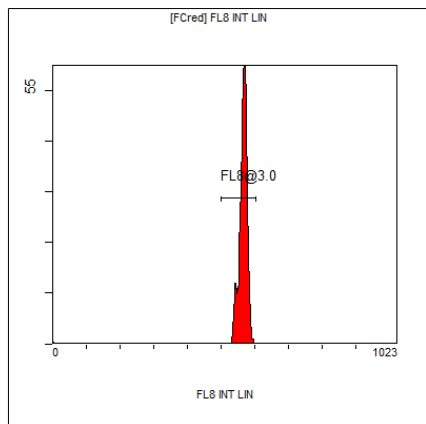
[FCred] FL6 INT LIN

Region	Number	HP X-CV	X-Mean
ALL	1534	1.01	569
FL6@3.0	1505	1.01	575



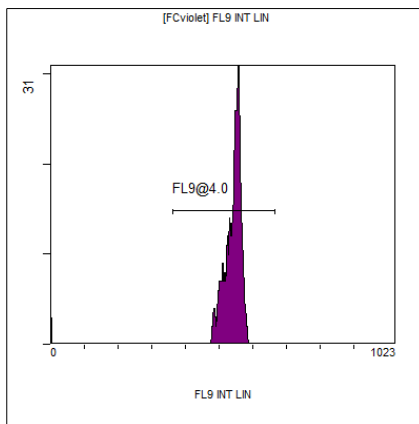
[FCred] FL7 INT LIN

Region	Number	HP X-CV	X-Mean
ALL	1534	1.68	583
FL7@3.0	1515	1.68	590



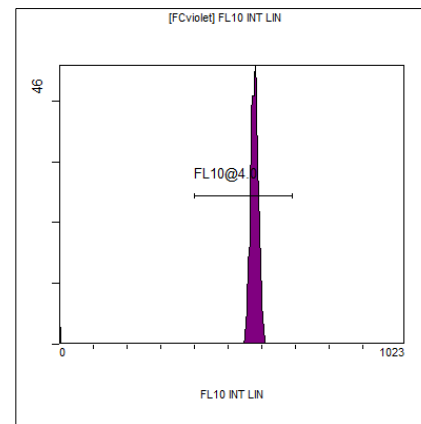
[FCred] FL8 INT LIN

Region	Number	HP X-CV	X-Mean
ALL	1534	1.21	559
FL8@3.0	1504	1.21	565



[FCviolet] FL9 INT LIN

Region	Number	HP X-CV	X-Mean
ALL	1440	1.40	528
FL9@4.0	1408	1.40	539



[FCviolet] FL10 INT LIN

Region	Number	HP X-CV	X-Mean
ALL	1440	1.42	567
FL10@4.0	1411	1.42	578