

Institution: IRB

Protocol :Alignment Blue Red Violet_ALIGN.pro

Runtime Results

Analysis Date: 24-Jun-2013, 09:56:02

Settings File: Alignment Blue Red Violet_ALIGN.pro, 11-Feb-2013, 13:38:24

Listmode File: Gallios FlowCheck 2013-06-24 001.LMD

Run Date: 24-Jun-13, 09:55:13

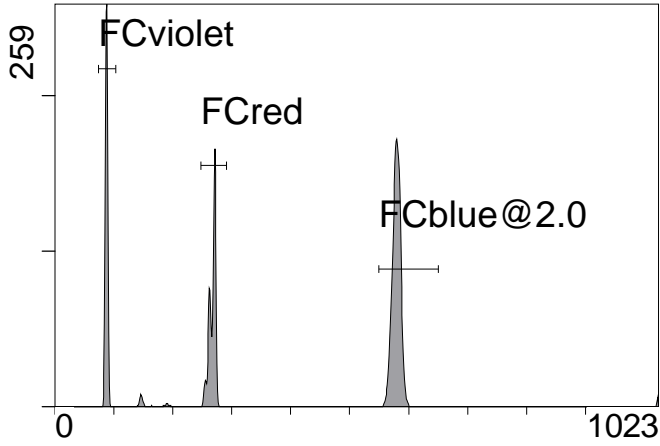
Sample ID: Gallios FlowCheck

User ID: duperray

Acquisition Time/Events: 22.5s / 6190 (PROTOCOL)

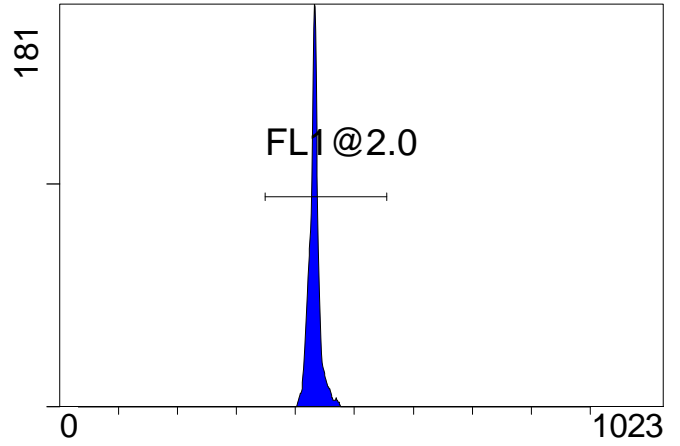
Instrument SN: AN11038 Software Version: Gallios 1.2

[Ungated] FS INT LIN



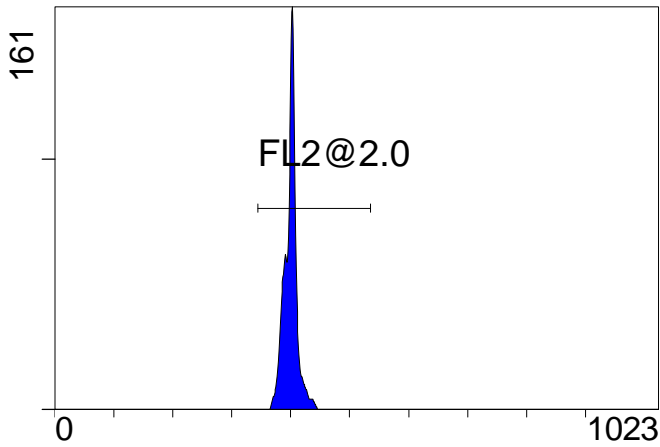
FS INT LIN

(3000) [FCblue@2.0] FL1 INT LIN



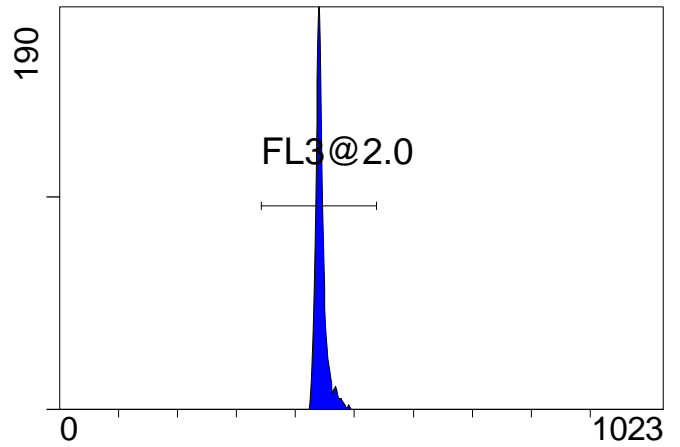
FL1 INT LIN

[FCblue@2.0] FL2 INT LIN



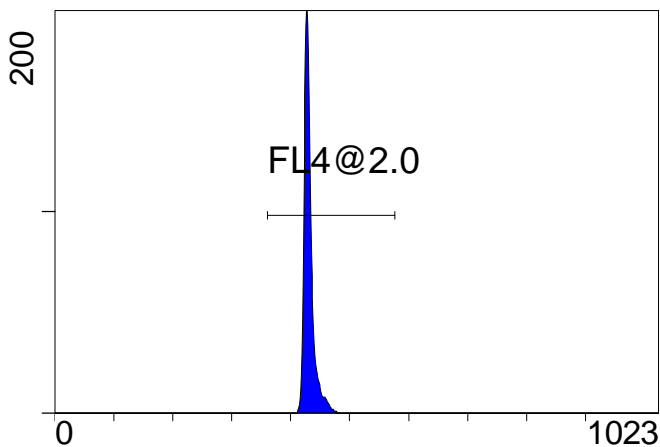
FL2 INT LIN

[FCblue@2.0] FL3 INT LIN



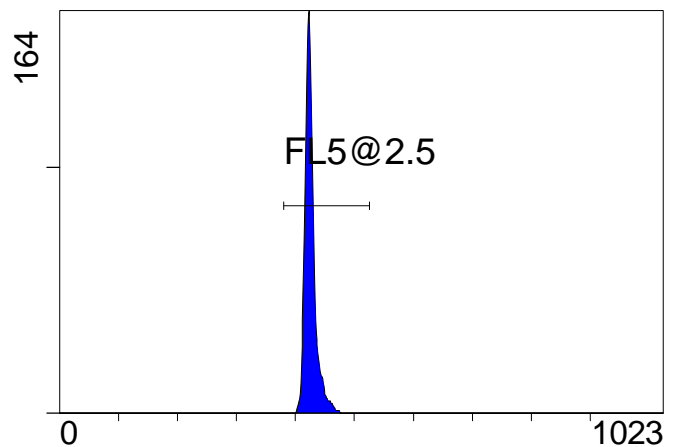
FL3 INT LIN

[FCblue@2.0] FL4 INT LIN



FL4 INT LIN

[FCblue@2.0] FL5 INT LIN



FL5 INT LIN

Institution: IRB

Protocol :Alignment Blue Red Violet_ALIGN.pro

Runtime Results

Analysis Date: 24-Jun-2013, 09:56:02

Settings File: Alignment Blue Red Violet_ALIGN.pro, 11-Feb-2013, 13:38:24

Listmode File: Gallios FlowCheck 2013-06-24 001.LMD

Run Date: 24-Jun-13, 09:55:13

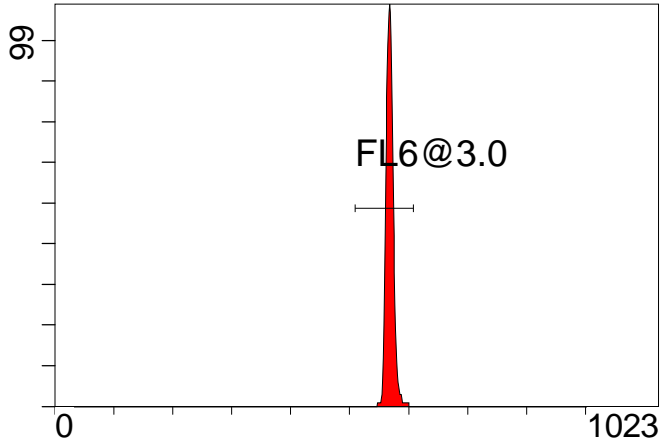
Sample ID: Gallios FlowCheck

User ID: duperray

Acquisition Time/Events: 22.5s / 6190 (PROTOCOL)

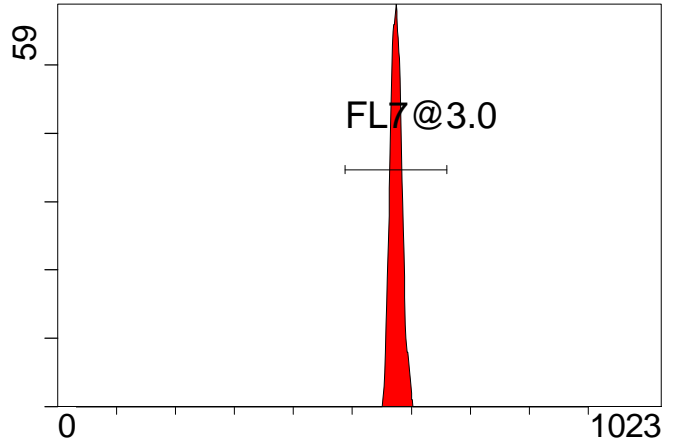
Instrument SN: AN11038 Software Version: Gallios 1.2

[FCred] FL6 INT LIN



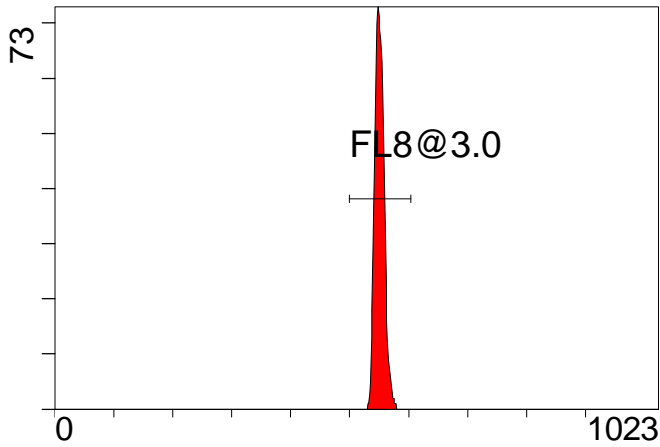
FL6 INT LIN

[FCred] FL7 INT LIN



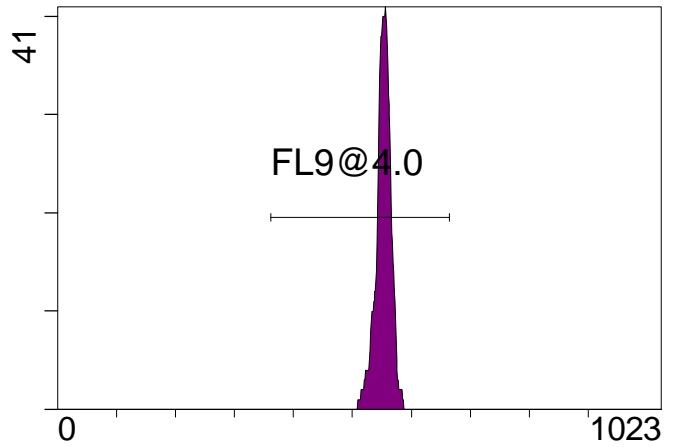
FL7 INT LIN

[FCred] FL8 INT LIN



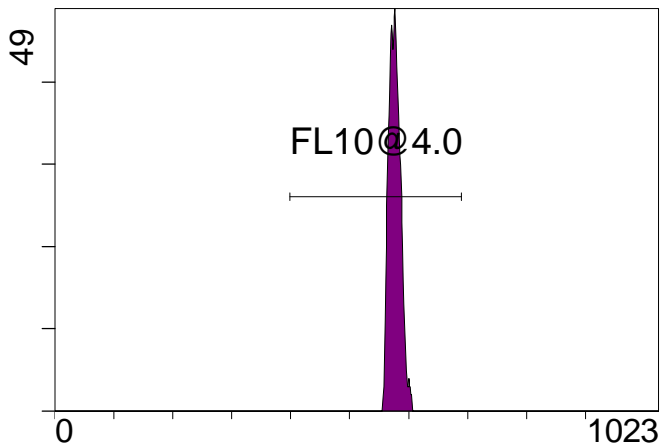
FL8 INT LIN

[FCviolet] FL9 INT LIN



FL9 INT LIN

[FCviolet] FL10 INT LIN



FL10 INT LIN