

Institution: IRB

Protocol :Alignment Blue Red Violet_ALIGN.pro

Listmode Replay: Runtime Protocol

Analysis Date: 19-Sep-2013, 08:47:07

Settings File: Alignment Blue Red Violet_ALIGN.pro, 25-Jul-2013, 13:28:34

Listmode File: Gallios FlowCheck 2013-09-19 001.LMD

Run Date: 19-Sep-13, 08:45:16

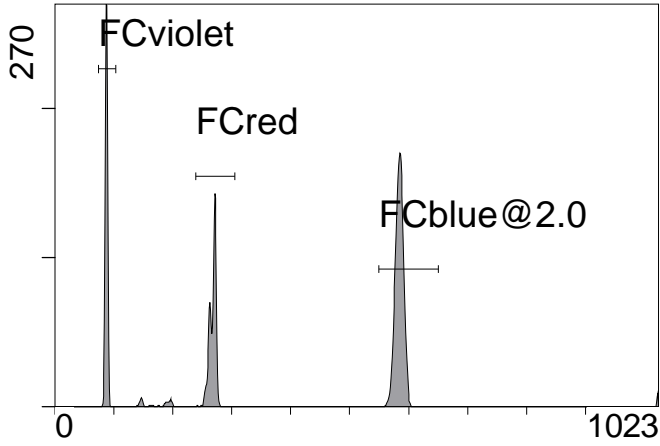
Sample ID: Gallios FlowCheck

User ID: duperray

Acquisition Time/Events: 62.0s / 6260 (PROTOCOL)

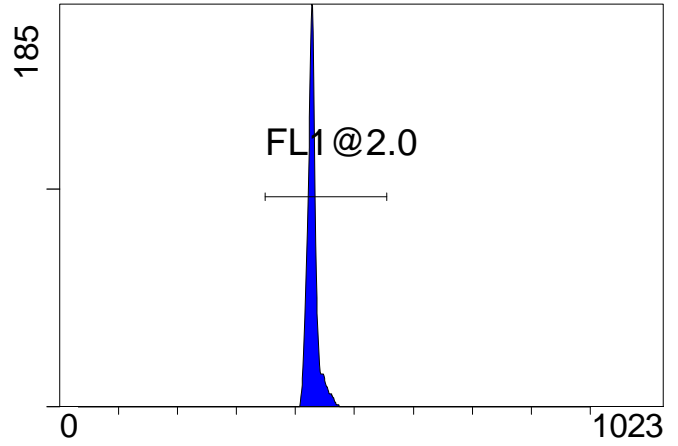
Instrument SN: AN11038 Software Version: Gallios 1.2

[Ungated] FS INT LIN



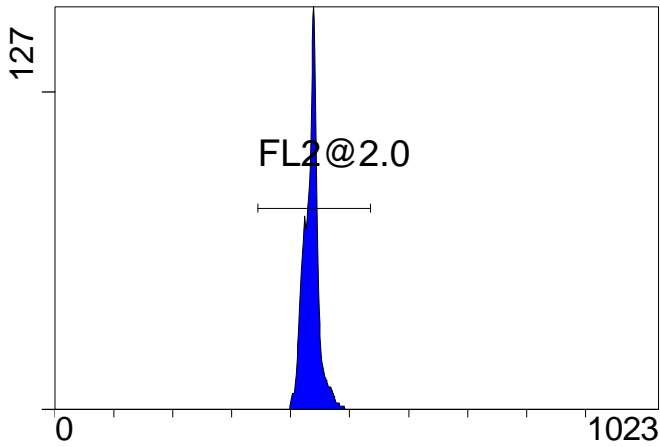
FS INT LIN

(3000) [FCblue@2.0] FL1 INT LIN



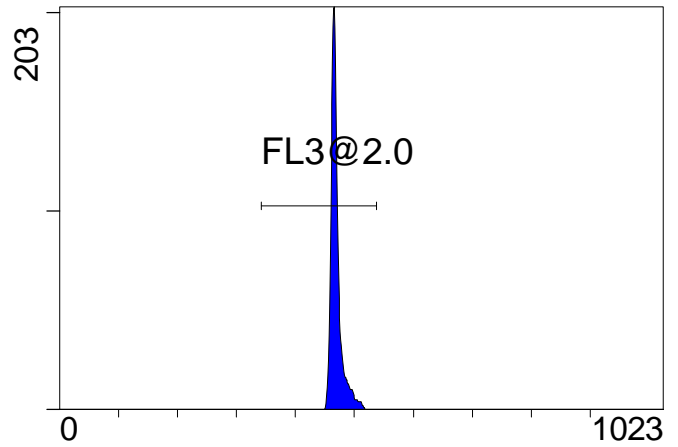
FL1 INT LIN

[FCblue@2.0] FL2 INT LIN



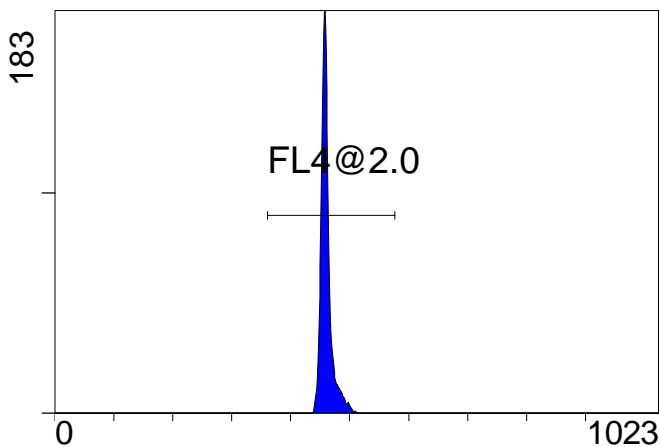
FL2 INT LIN

[FCblue@2.0] FL3 INT LIN



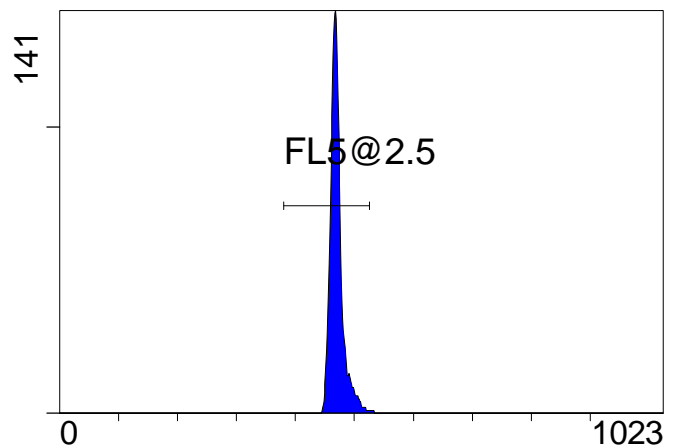
FL3 INT LIN

[FCblue@2.0] FL4 INT LIN



FL4 INT LIN

[FCblue@2.0] FL5 INT LIN



FL5 INT LIN

Institution: IRB

Protocol :Alignment Blue Red Violet_ALIGN.pro

Listmode Replay: Runtime Protocol

Analysis Date: 19-Sep-2013, 08:47:07

Settings File: Alignment Blue Red Violet_ALIGN.pro, 25-Jul-2013, 13:28:34

Listmode File: Gallios FlowCheck 2013-09-19 001.LMD

Run Date: 19-Sep-13, 08:45:16

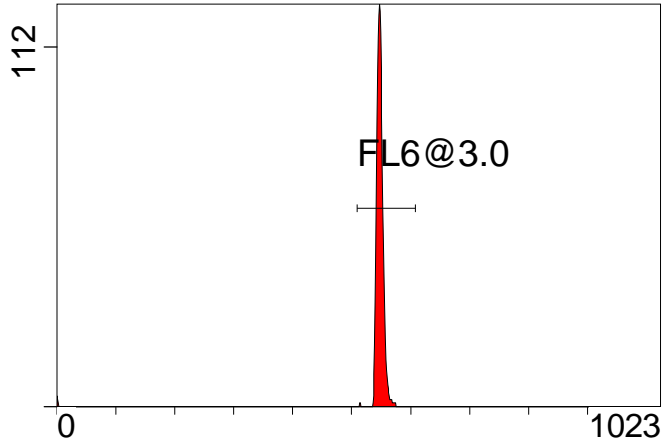
Sample ID: Gallios FlowCheck

User ID: duperray

Acquisition Time/Events: 62.0s / 6260 (PROTOCOL)

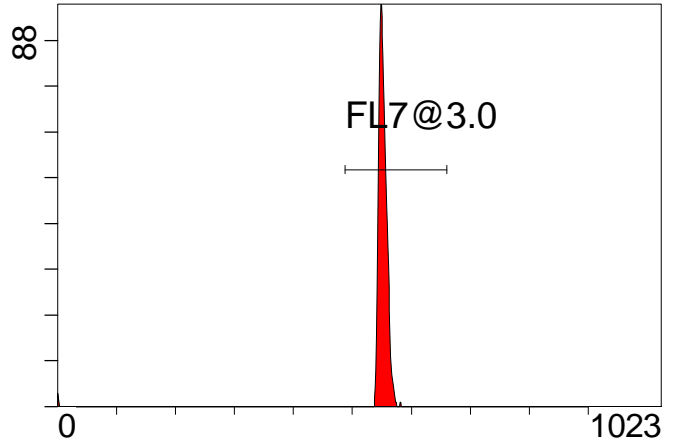
Instrument SN: AN11038 Software Version: Gallios 1.2

[FCred] FL6 INT LIN



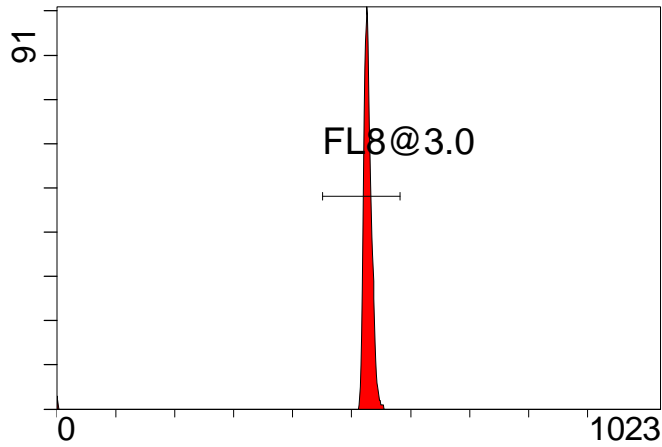
FL6 INT LIN

[FCred] FL7 INT LIN



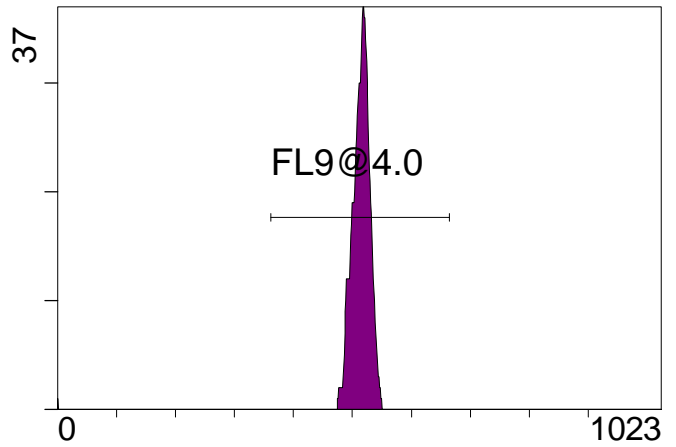
FL7 INT LIN

[FCred] FL8 INT LIN



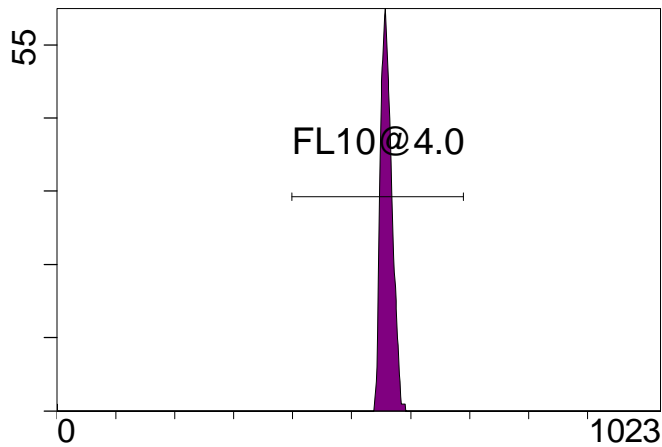
FL8 INT LIN

[FCviolet] FL9 INT LIN



FL9 INT LIN

[FCviolet] FL10 INT LIN



FL10 INT LIN

Statistical Analysis

PROGRAM INFORMATION

File:- Gallios FlowCheck 2013-09-19 001.LMD

Gate:- FCblue@2.0 [FCblue@2.0]

Compensation:-

Region	Number	X-Mean	X-HPCV
ALL	3000	429	1.09
ALL	3000	471	1.46
ALL	3000	461	1.03
ALL	3000	470	0.86
ALL	3000	435	1.06
FL1@2.0	2995	430	1.09
FL2@2.0	2995	435	1.06
FL3@2.0	2988	470	0.86
FL4@2.0	2995	462	1.03
FL5@2.5	2971	471	1.46

File:- Gallios FlowCheck 2013-09-19 001.LMD

Gate:- FCred [FCred]

Compensation:-

Region	Number	X-Mean	X-HPCV
ALL	1504	522	0.99
ALL	1504	546	0.94
ALL	1504	542	0.74
FL6@3.0	1481	548	0.74
FL7@3.0	1484	552	0.94
FL8@3.0	1485	528	0.99

File:- Gallios FlowCheck 2013-09-19 001.LMD

Gate:- FCviolet [FCviolet]

Compensation:-

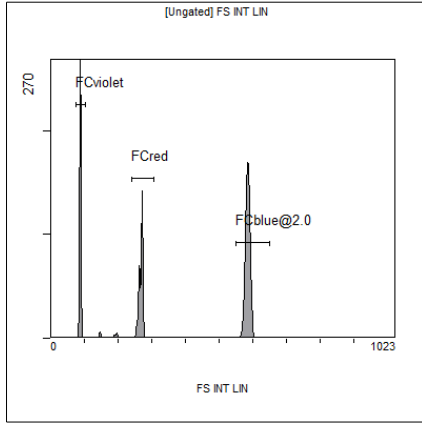
Region	Number	X-Mean	X-HPCV
ALL	1370	556	1.49
ALL	1370	509	1.92
FL10@4.0	1360	560	1.49
FL9@4.0	1356	514	1.92

File:- Gallios FlowCheck 2013-09-19 001.LMD

Gate:- Ungated

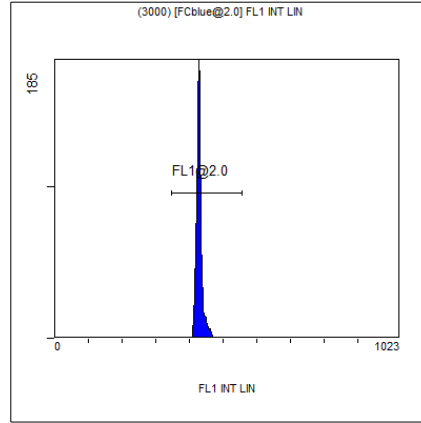
Compensation:-

Region	Number	X-Mean	X-HPCV
ALL	6260	386	1.13
FCblue@2.0	3000	585	1.00
FCred	1504	268	0.65
FCviolet	1370	87.3	1.13



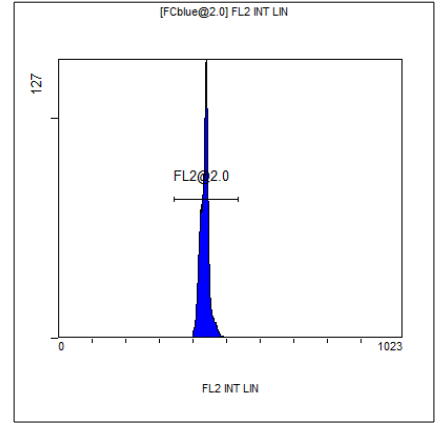
[Ungated] FS INT LIN

Region	Number	HP	X-CV	X-Mean
ALL	6260	1.13		386
FCblue@2.0	3000	1.00		585
FCred	1504	0.65		268
FCviolet	1370	1.13		87.3



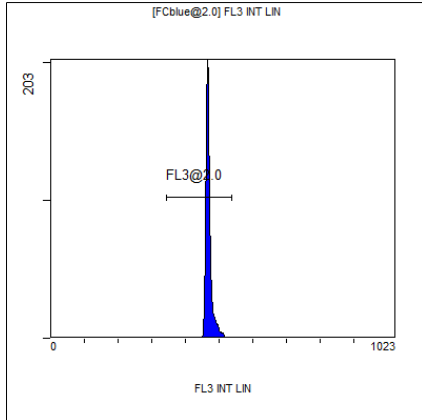
(3000) [FCblue@2.0] FL1 INT LIN

Region	Number	HP	X-CV	X-Mean
ALL	3000	1.09		429
FL1@2.0	2995	1.09		430



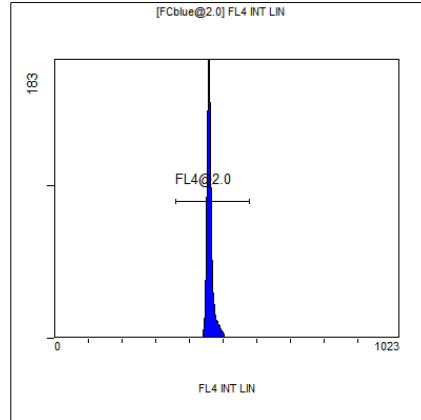
[FCblue@2.0] FL2 INT LIN

Region	Number	HP	X-CV	X-Mean
ALL	3000	1.06		435
FL2@2.0	2995	1.06		435



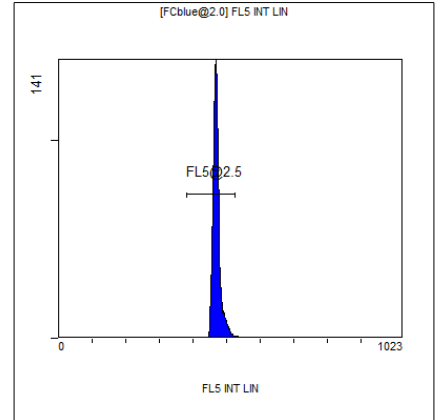
[FCblue@2.0] FL3 INT LIN

Region	Number	HP	X-CV	X-Mean
ALL	3000	0.86		470
FL3@2.0	2988	0.86		470



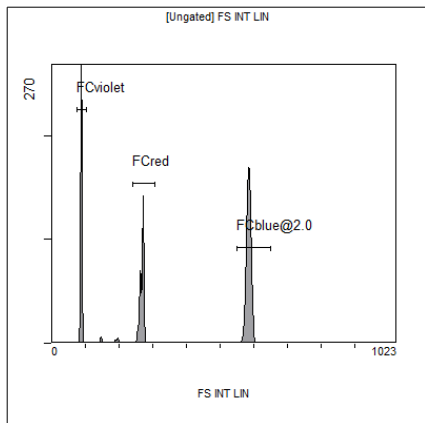
[FCblue@2.0] FL4 INT LIN

Region	Number	HP	X-CV	X-Mean
ALL	3000	1.03		461
FL4@2.0	2995	1.03		462



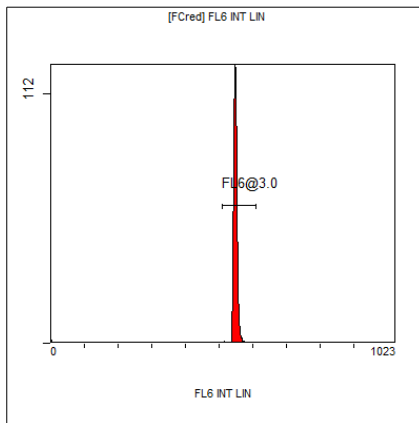
[FCblue@2.0] FL5 INT LIN

Region	Number	HP	X-CV	X-Mean
ALL	3000	1.46		471
FL5@2.5	2971	1.46		471



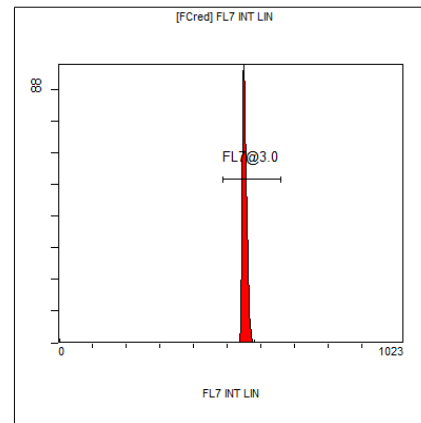
[Ungated] FS INT LIN

Region	Number	HP	X-CV	X-Mean
ALL	6260	1.13		386
FCblue@2.0	3000	1.00		585
FCred	1504	0.65		268
FCviolet	1370	1.13		87.3



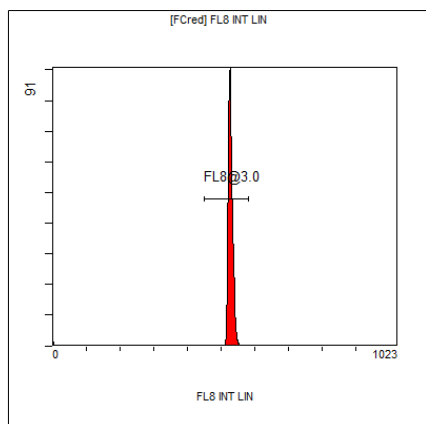
[FCred] FL6 INT LIN

Region	Number	HP	X-CV	X-Mean
ALL	1504	0.74		542
FL6@3.0	1481	0.74		548



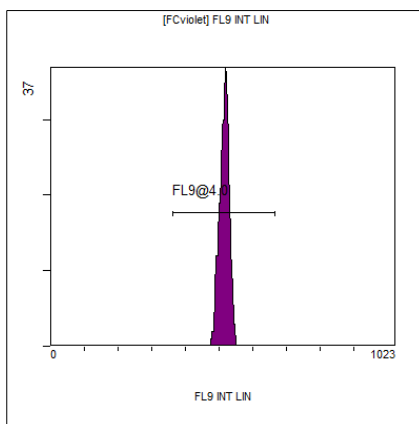
[FCred] FL7 INT LIN

Region	Number	HP	X-CV	X-Mean
ALL	1504	0.94		546
FL7@3.0	1484	0.94		552



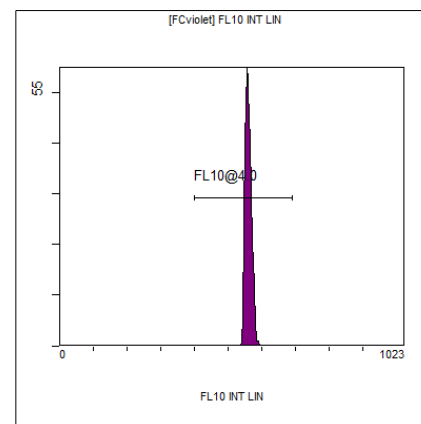
[FCred] FL8 INT LIN

Region	Number	HP	X-CV	X-Mean
ALL	1504	0.99		522
FL8@3.0	1485	0.99		528



[FCviolet] FL9 INT LIN

Region	Number	HP	X-CV	X-Mean
ALL	1370	1.92		509
FL9@4.0	1356	1.92		514



[FCviolet] FL10 INT LIN

Region	Number	HP	X-CV	X-Mean
ALL	1370	1.49		556
FL10@4.0	1360	1.49		560