

Institution: IRB

Protocol :Alignment Blue Red Violet_ALIGN.pro

Listmode Replay: Runtime Protocol

Analysis Date: 15-Oct-2013, 09:50:04

Settings File: Alignment Blue Red Violet_ALIGN.pro, 08-Oct-2013, 14:19:10

Listmode File: Gallios FlowCheck 2013-10-15 001.LMD

Run Date: 15-Oct-13, 09:47:58

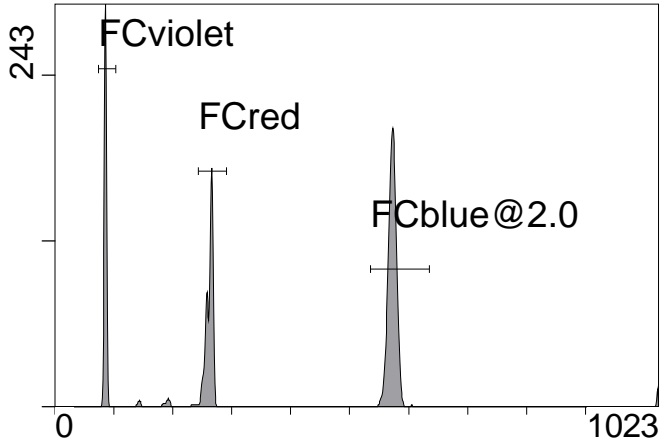
Sample ID: Gallios FlowCheck

User ID: duperray

Acquisition Time/Events: 82.5s / 5938 (MANUAL)

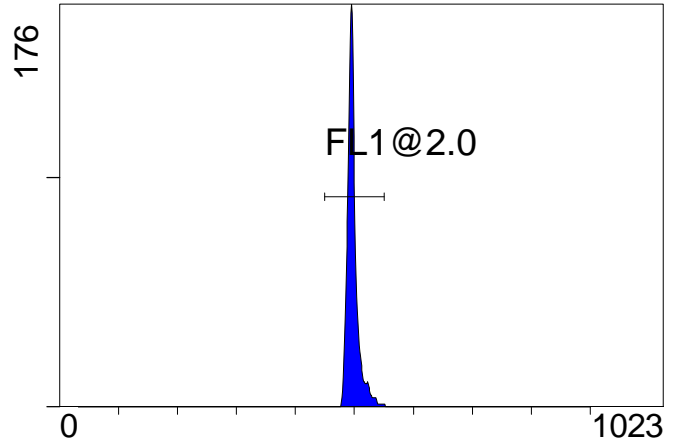
Instrument SN: AN11038 Software Version: Gallios 1.2

[Ungated] FS INT LIN



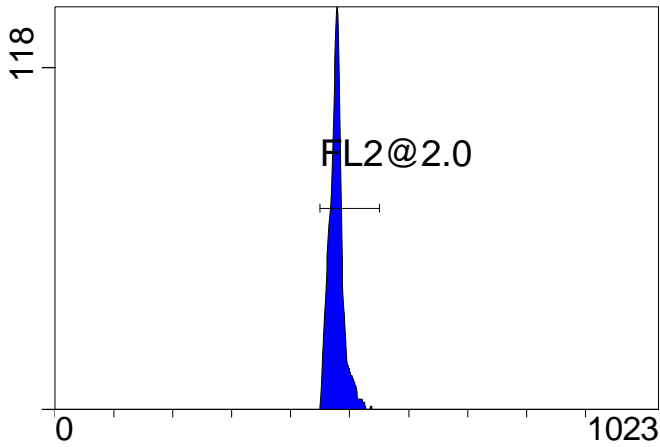
FS INT LIN

(3000) [FCblue@2.0] FL1 INT LIN



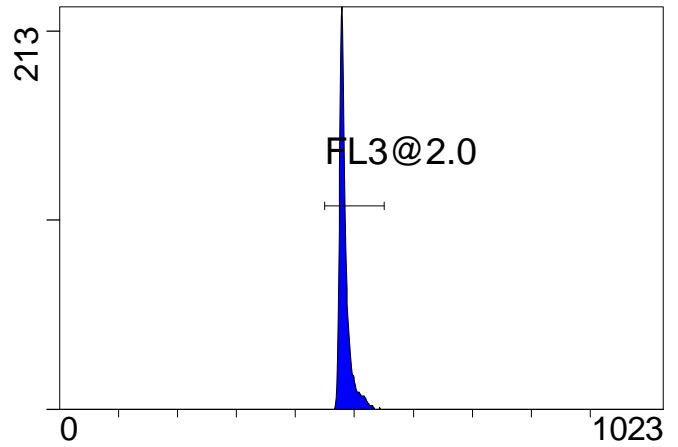
FL1 INT LIN

[FCblue@2.0] FL2 INT LIN



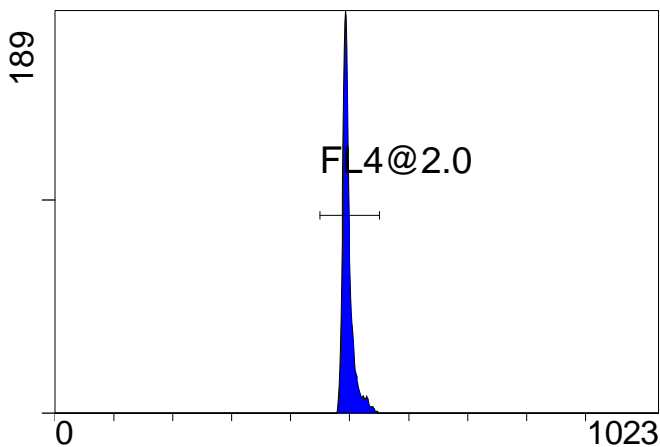
FL2 INT LIN

[FCblue@2.0] FL3 INT LIN



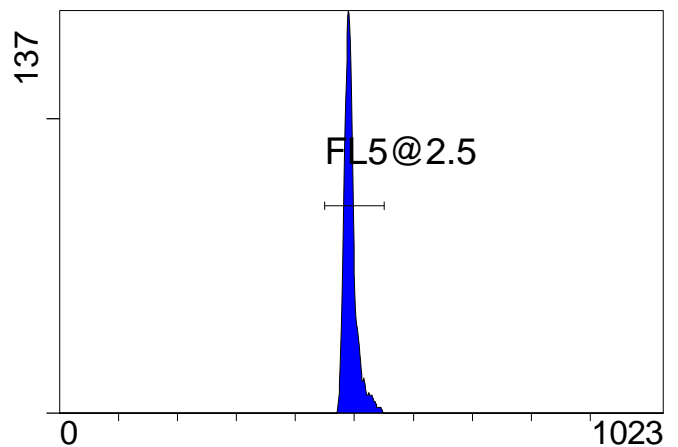
FL3 INT LIN

[FCblue@2.0] FL4 INT LIN



FL4 INT LIN

[FCblue@2.0] FL5 INT LIN



FL5 INT LIN

Institution: IRB

Protocol :Alignment Blue Red Violet_ALIGN.pro

Listmode Replay: Runtime Protocol

Analysis Date: 15-Oct-2013, 09:50:04

Settings File: Alignment Blue Red Violet_ALIGN.pro, 08-Oct-2013, 14:19:10

Listmode File: Gallios FlowCheck 2013-10-15 001.LMD

Run Date: 15-Oct-13, 09:47:58

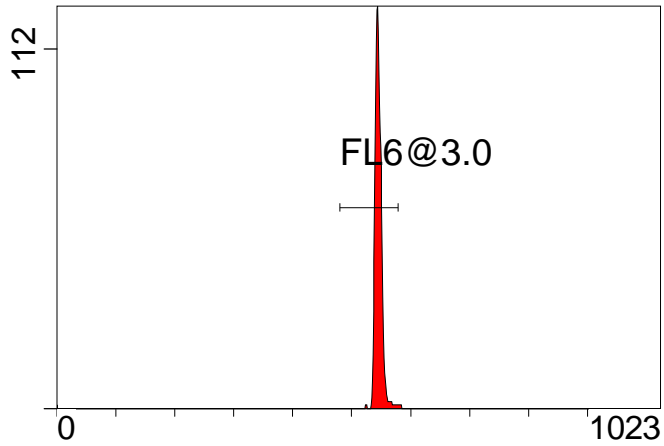
Sample ID: Gallios FlowCheck

User ID: duperray

Acquisition Time/Events: 82.5s / 5938 (MANUAL)

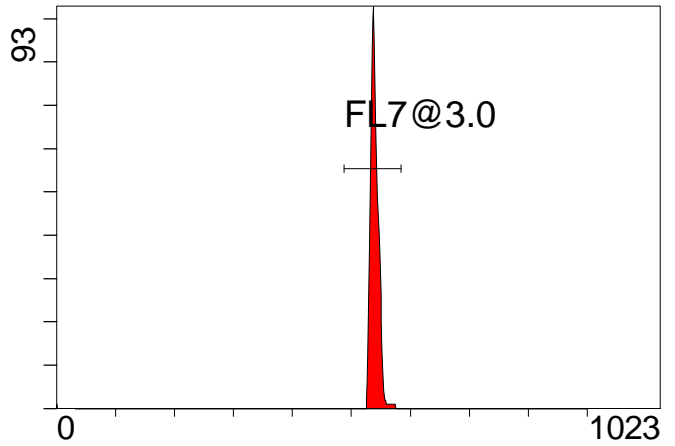
Instrument SN: AN11038 Software Version: Gallios 1.2

[FCred] FL6 INT LIN



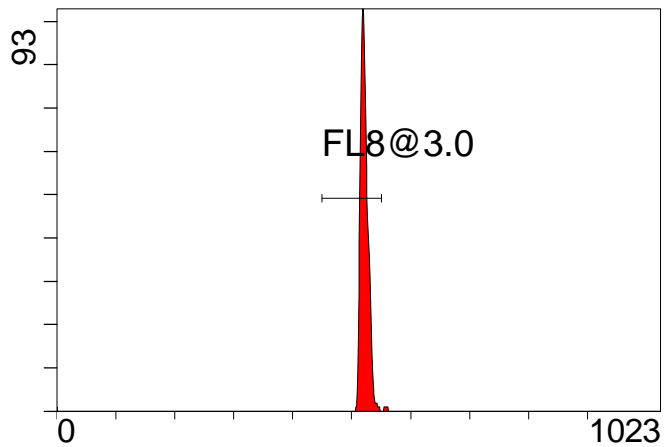
FL6 INT LIN

[FCred] FL7 INT LIN



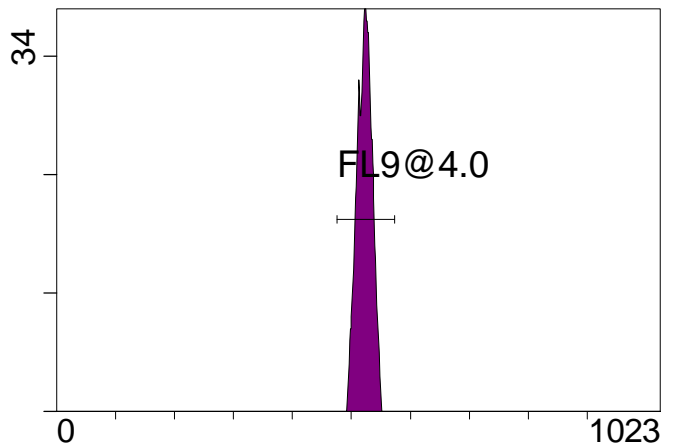
FL7 INT LIN

[FCred] FL8 INT LIN



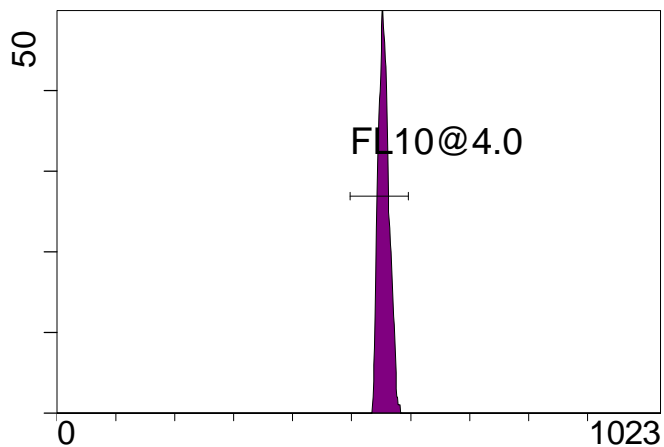
FL8 INT LIN

[FCviolet] FL9 INT LIN



FL9 INT LIN

[FCviolet] FL10 INT LIN



FL10 INT LIN

Statistical Analysis

PROGRAM INFORMATION

File:- Gallios FlowCheck 2013-10-15 001.LMD

Gate:- FCblue@2.0 [FCblue@2.0]

Compensation:-

Region	Number	X-Mean	X-HPCV
ALL	2882	494	1.36
ALL	2882	498	0.81
ALL	2882	484	0.65
ALL	2882	478	1.35
ALL	2882	498	0.96
FL1@2.0	2854	498	0.96
FL2@2.0	2865	478	1.35
FL3@2.0	2866	484	0.65
FL4@2.0	2848	498	0.81
FL5@2.5	2852	494	1.36

File:- Gallios FlowCheck 2013-10-15 001.LMD

Gate:- FCred [FCred]

Compensation:-

Region	Number	X-Mean	X-HPCV
ALL	1485	543	0.89
ALL	1485	537	0.65
ALL	1485	519	1.00
FL6@3.0	1459	546	0.89
FL7@3.0	1469	540	0.65
FL8@3.0	1450	522	1.00

File:- Gallios FlowCheck 2013-10-15 001.LMD

Gate:- FCviolet [FCviolet]

Compensation:-

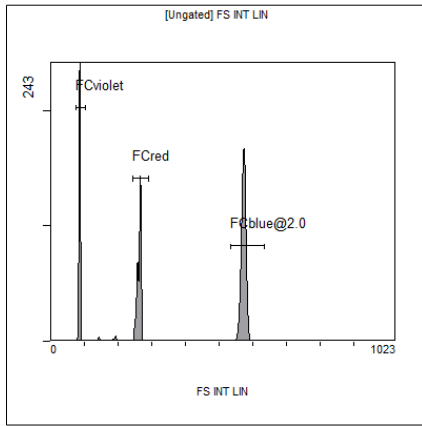
Region	Number	X-Mean	X-HPCV
ALL	1212	518	1.28
ALL	1212	552	1.41
FL10@4.0	1202	555	1.41
FL9@4.0	1200	523	1.28

File:- Gallios FlowCheck 2013-10-15 001.LMD

Gate:- Ungated

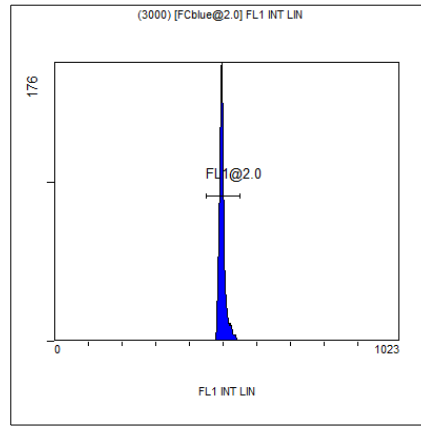
Compensation:-

Region	Number	X-Mean	X-HPCV
ALL	5938	383	1.15
FCblue@2.0	2882	573	1.01
FCred	1485	262	0.63
FCviolet	1212	85.6	1.15



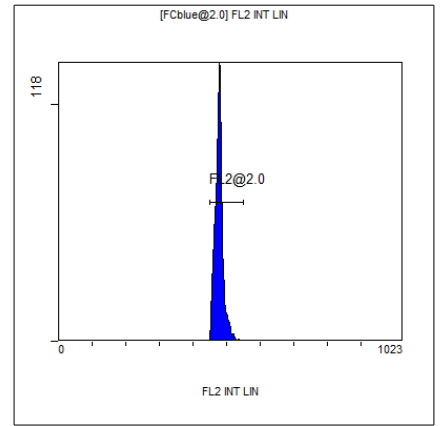
[Ungated] FS INT LIN

Region	Number	HP X-CV	X-Mean
ALL	5938	1.15	383
FCblue@2.0	2882	1.01	573
FCred	1485	0.63	262
FCviolet	1212	1.15	85.6



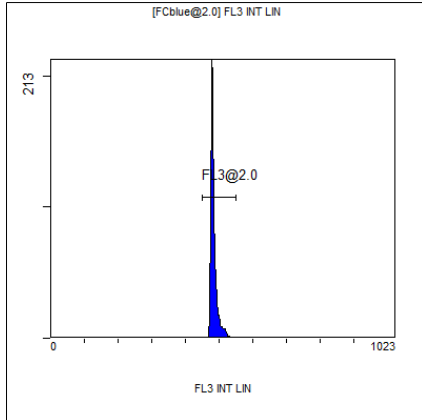
(3000) [FCblue@2.0] FL1 INT LIN

Region	Number	HP X-CV	X-Mean
ALL	2882	0.96	498
FL1@2.0	2854	0.96	498



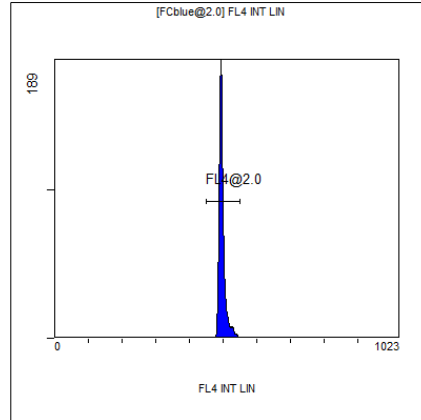
[FCblue@2.0] FL2 INT LIN

Region	Number	HP X-CV	X-Mean
ALL	2882	1.35	478
FL2@2.0	2865	1.35	478



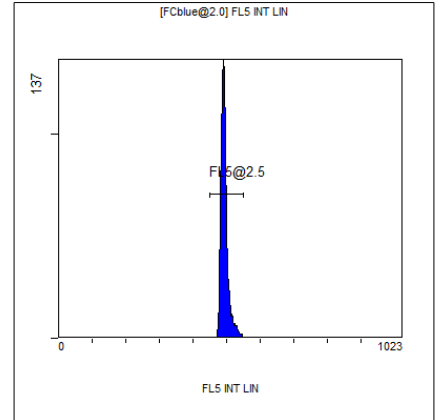
[FCblue@2.0] FL3 INT LIN

Region	Number	HP X-CV	X-Mean
ALL	2882	0.65	484
FL3@2.0	2866	0.65	484



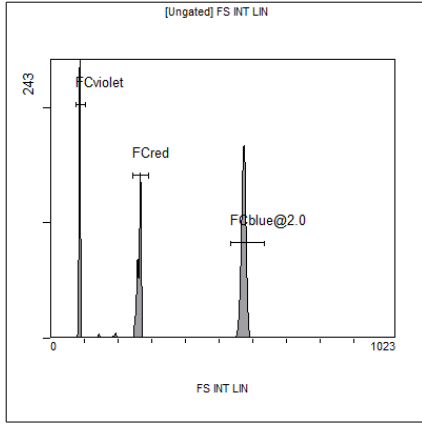
[FCblue@2.0] FL4 INT LIN

Region	Number	HP X-CV	X-Mean
ALL	2882	0.81	498
FL4@2.0	2848	0.81	498



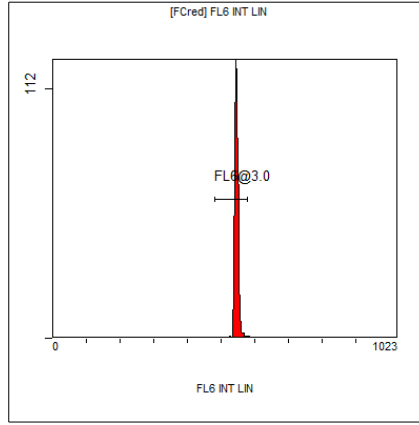
[FCblue@2.0] FL5 INT LIN

Region	Number	HP X-CV	X-Mean
ALL	2882	1.36	494
FL5@2.5	2852	1.36	494



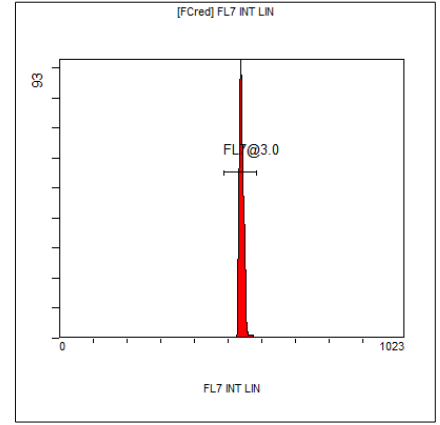
[Ungated] FS INT LIN

Region	Number	HP	X-CV	X-Mean
ALL	5938	1.15		383
FCblue@2.0	2882	1.01		573
FCred	1485	0.63		262
FCviolet	1212	1.15		85.6



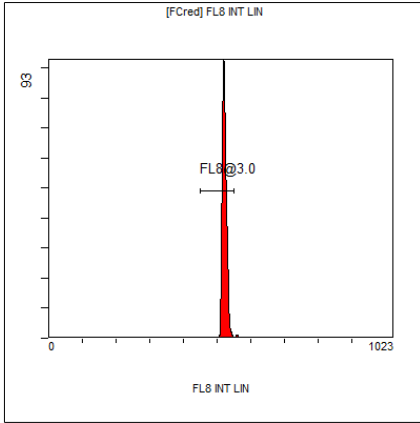
[FCred] FL6 INT LIN

Region	Number	HP	X-CV	X-Mean
ALL	1485	0.89		543
FL6@3.0	1459	0.89		546



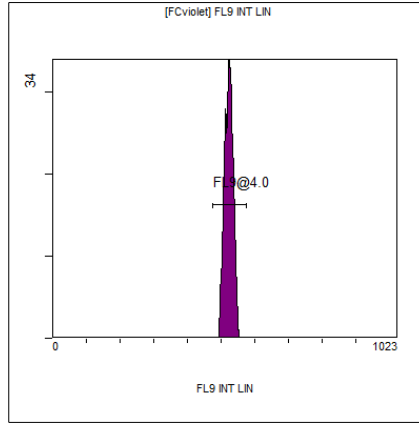
[FCred] FL7 INT LIN

Region	Number	HP	X-CV	X-Mean
ALL	1485	0.65		537
FL7@3.0	1469	0.65		540



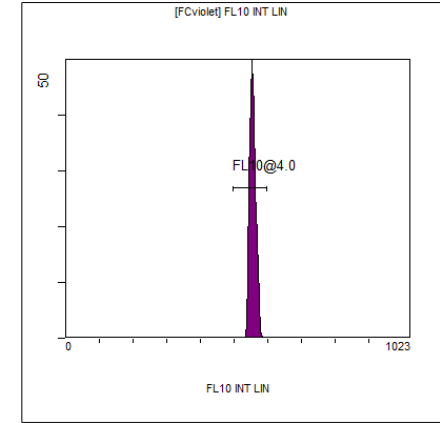
[FCred] FL8 INT LIN

Region	Number	HP	X-CV	X-Mean
ALL	1485	1.00		519
FL8@3.0	1450	1.00		522



[FCviolet] FL9 INT LIN

Region	Number	HP	X-CV	X-Mean
ALL	1212	1.28		518
FL9@4.0	1200	1.28		523



[FCviolet] FL10 INT LIN

Region	Number	HP	X-CV	X-Mean
ALL	1212	1.41		552
FL10@4.0	1202	1.41		555