

Institution:

Protocol :Alignment Blue Red Violet\_ALIGN.pro

Listmode Replay: New Protocol

Analysis Date: 06-Jan-2014, 09:50:22

Settings File: Alignment Blue Red Violet\_ALIGN.pro, 25-Nov-2013, 09:47:20

Listmode File: Gallios FlowCheck 2014-01-06 001.LMD

Run Date: 06-Jan-14, 09:48:00

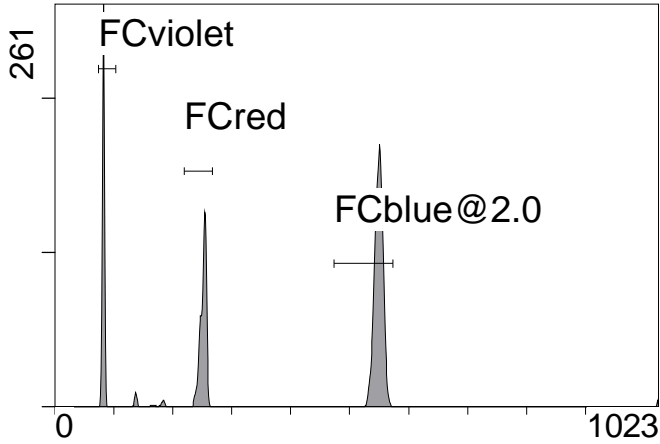
Sample ID: Gallios FlowCheck

User ID: Lopez

Acquisition Time/Events: 68.5s / 5995 (PROTOCOL)

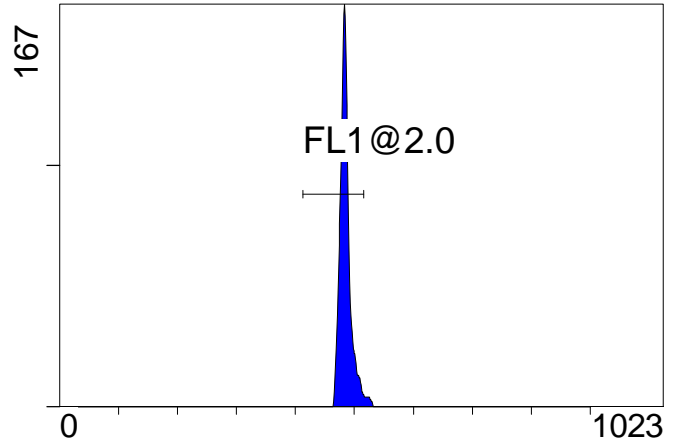
Instrument SN: AN11038 Software Version: Gallios 1.2

[Ungated] FS INT LIN



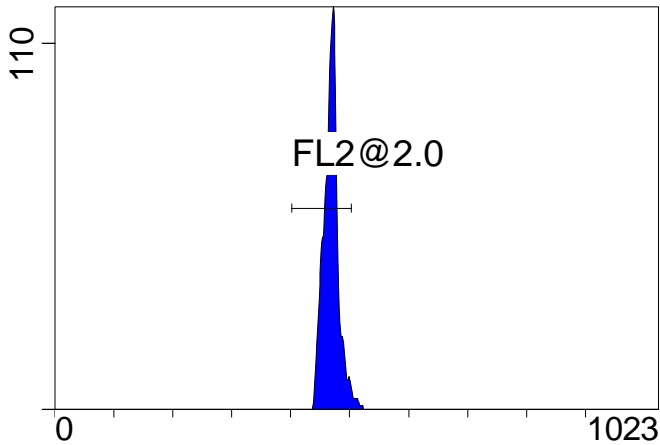
FS INT LIN

(3000) [FCblue@2.0] FL1 INT LIN



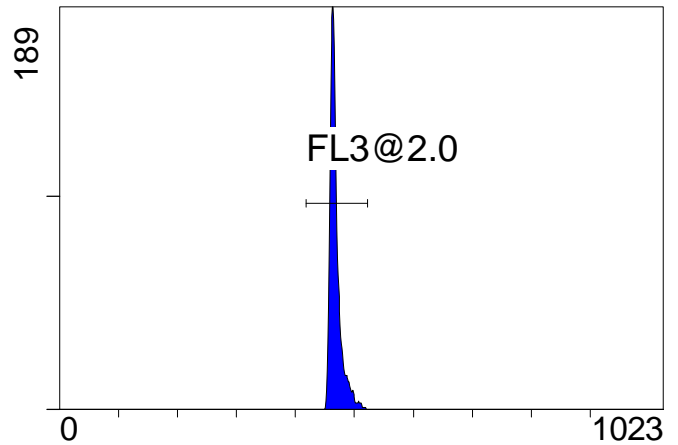
FL1 INT LIN

[FCblue@2.0] FL2 INT LIN



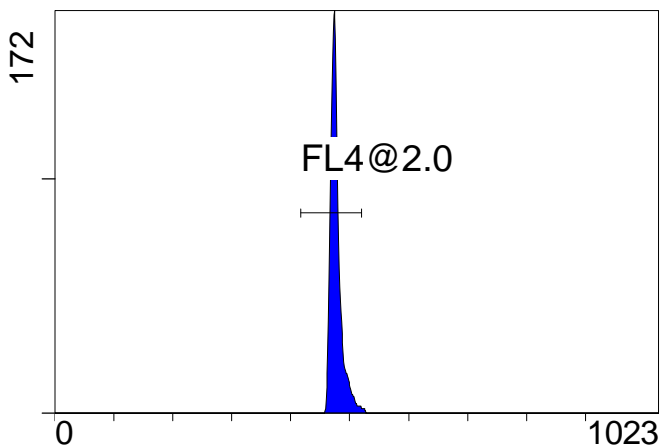
FL2 INT LIN

[FCblue@2.0] FL3 INT LIN



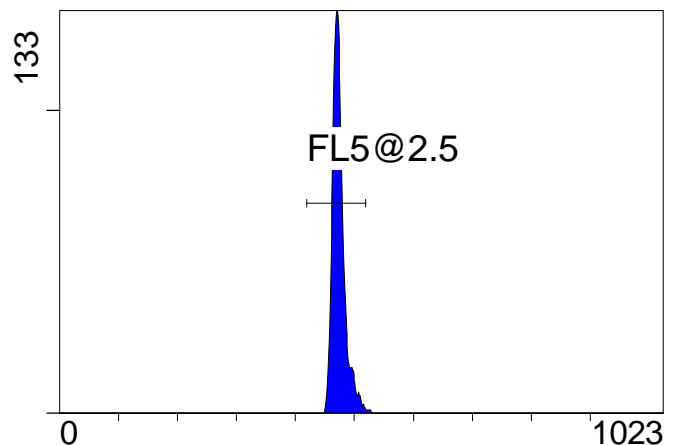
FL3 INT LIN

[FCblue@2.0] FL4 INT LIN



FL4 INT LIN

[FCblue@2.0] FL5 INT LIN



FL5 INT LIN

Institution:

Protocol :Alignment Blue Red Violet\_ALIGN.pro

Listmode Replay: New Protocol

Analysis Date: 06-Jan-2014, 09:50:22

Settings File: Alignment Blue Red Violet\_ALIGN.pro, 25-Nov-2013, 09:47:20

Listmode File: Gallios FlowCheck 2014-01-06 001.LMD

Run Date: 06-Jan-14, 09:48:00

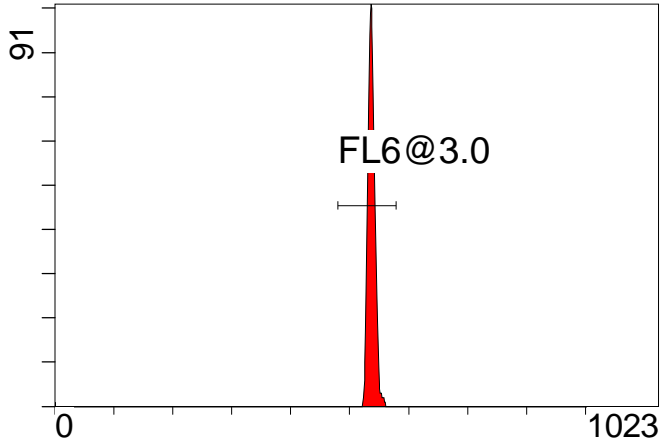
Sample ID: Gallios FlowCheck

User ID: Lopez

Acquisition Time/Events: 68.5s / 5995 (PROTOCOL)

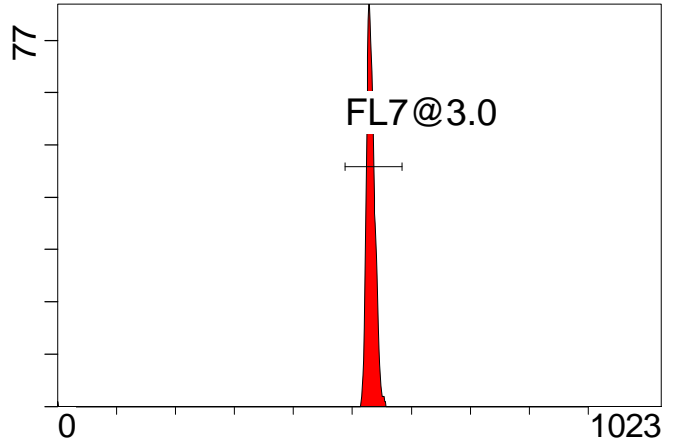
Instrument SN: AN11038 Software Version: Gallios 1.2

[FCred] FL6 INT LIN



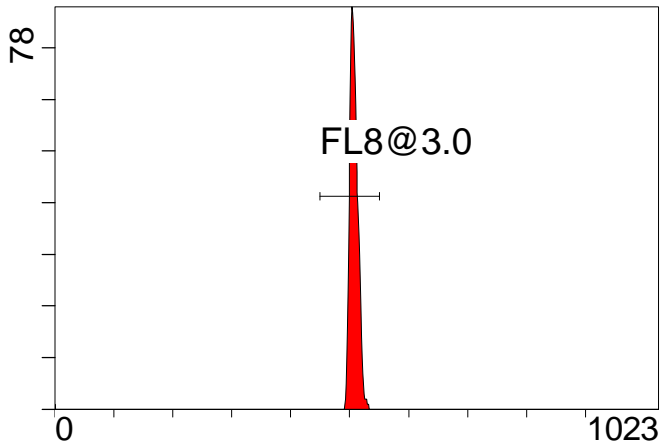
FL6 INT LIN

[FCred] FL7 INT LIN



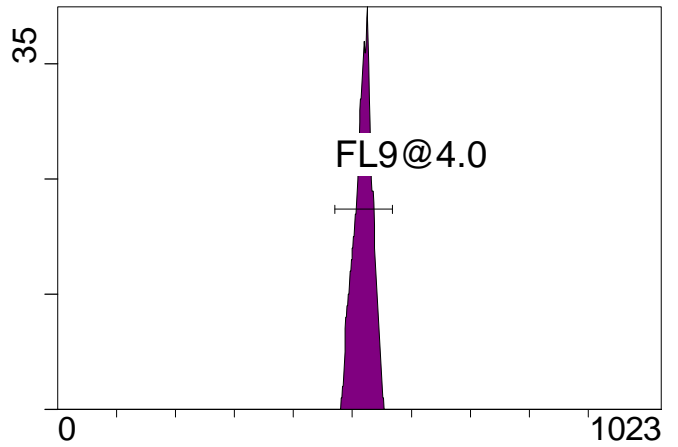
FL7 INT LIN

[FCred] FL8 INT LIN



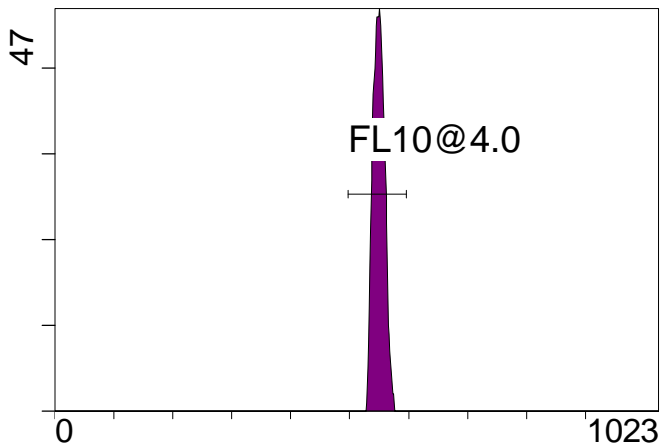
FL8 INT LIN

[FCviolet] FL9 INT LIN



FL9 INT LIN

[FCviolet] FL10 INT LIN



FL10 INT LIN

**Statistical Analysis**

**PROGRAM INFORMATION**

File:- Gallios FlowCheck 2014-01-06 001.LMD

Gate:- FCblue@2.0 [FCblue@2.0]

Compensation:-

Region	Number	X-Mean	X-HPCV
ALL	3000	486	1.07
ALL	3000	469	1.31
ALL	3000	474	1.54
ALL	3000	478	1.07
ALL	3000	468	0.98
FL1@2.0	2914	485	1.07
FL2@2.0	2914	468	1.31
FL3@2.0	2989	468	0.98
FL4@2.0	2962	477	1.07
FL5@2.5	2964	474	1.54

File:- Gallios FlowCheck 2014-01-06 001.LMD

Gate:- FCred [FCred]

Compensation:-

Region	Number	X-Mean	X-HPCV
ALL	1389	533	0.97
ALL	1389	527	1.17
ALL	1389	504	1.10
FL6@3.0	1372	537	0.97
FL7@3.0	1372	532	1.17
FL8@3.0	1371	508	1.10

File:- Gallios FlowCheck 2014-01-06 001.LMD

Gate:- FCviolet [FCviolet]

Compensation:-

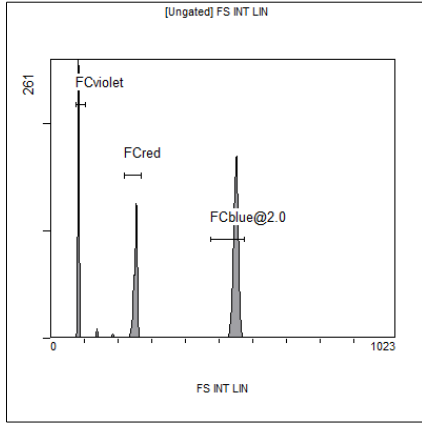
Region	Number	X-Mean	X-HPCV
ALL	1300	518	0.64
ALL	1300	549	1.70
FL10@4.0	1298	550	1.70
FL9@4.0	1297	518	0.64

File:- Gallios FlowCheck 2014-01-06 001.LMD

Gate:- Ungated

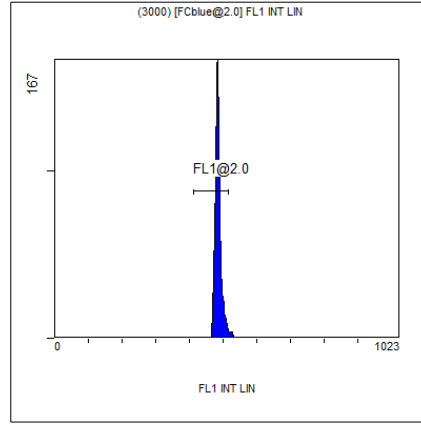
Compensation:-

Region	Number	X-Mean	X-HPCV
ALL	5995	367	1.31
FCblue@2.0	3000	549	1.17
FCred	1389	251	0.91
FCviolet	1300	82.3	1.31



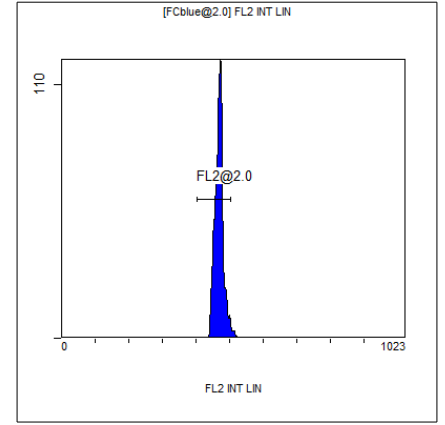
[Ungated] FS INT LIN

Region	Number	HP	X-CV	X-Mean
ALL	5995	1.31		367
FCblue@2.0	3000	1.17		549
FCred	1389	0.91		251
FCviolet	1300	1.31		82.3



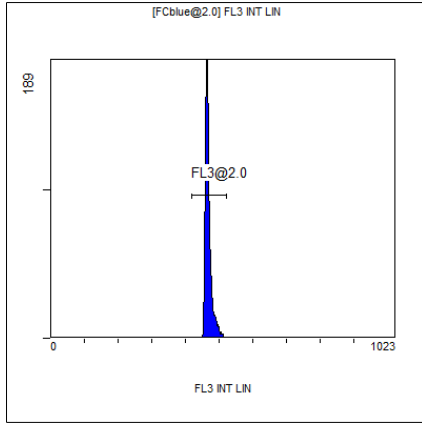
(3000) [FCblue@2.0] FL1 INT LIN

Region	Number	HP	X-CV	X-Mean
ALL	3000	1.07		486
FL1@2.0	2914	1.07		485



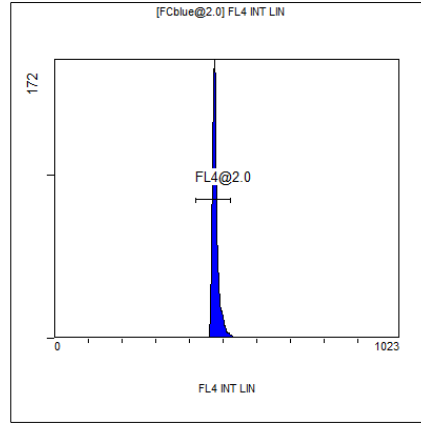
[FCblue@2.0] FL2 INT LIN

Region	Number	HP	X-CV	X-Mean
ALL	3000	1.31		469
FL2@2.0	2914	1.31		468



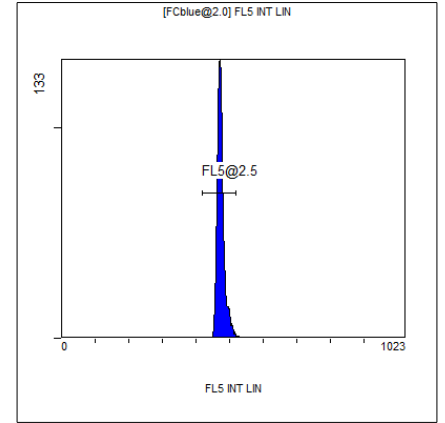
[FCblue@2.0] FL3 INT LIN

Region	Number	HP	X-CV	X-Mean
ALL	3000	0.98		468
FL3@2.0	2989	0.98		468



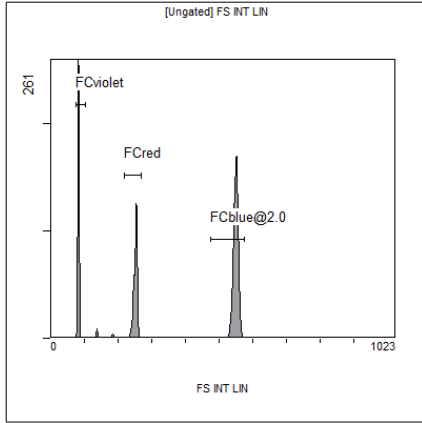
[FCblue@2.0] FL4 INT LIN

Region	Number	HP	X-CV	X-Mean
ALL	3000	1.07		478
FL4@2.0	2962	1.07		477



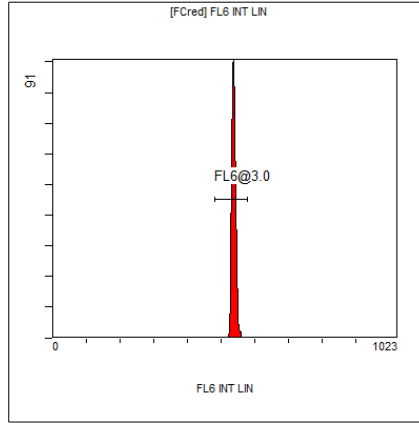
[FCblue@2.0] FL5 INT LIN

Region	Number	HP	X-CV	X-Mean
ALL	3000	1.54		474
FL5@2.5	2964	1.54		474



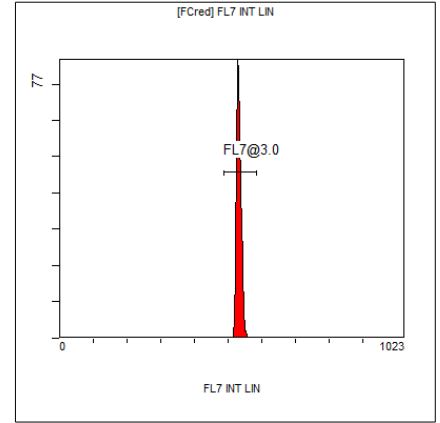
[Ungated] FS INT LIN

Region	Number	HP X-CV	X-Mean
ALL	5995	1.31	367
FCblue@2.0	3000	1.17	549
FCred	1389	0.91	251
FCviolet	1300	1.31	82.3



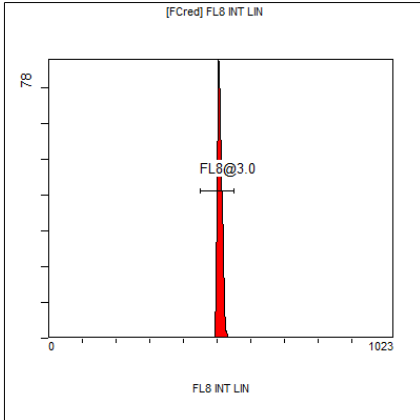
[FCred] FL6 INT LIN

Region	Number	HP X-CV	X-Mean
ALL	1389	0.97	533
FL6@3.0	1372	0.97	537



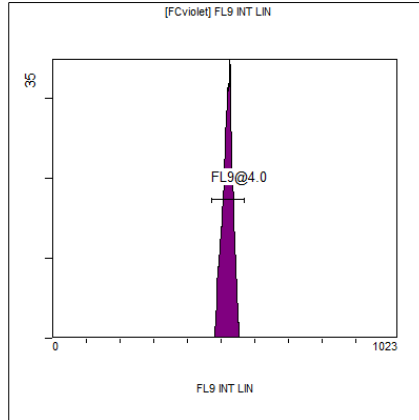
[FCred] FL7 INT LIN

Region	Number	HP X-CV	X-Mean
ALL	1389	1.17	527
FL7@3.0	1372	1.17	532



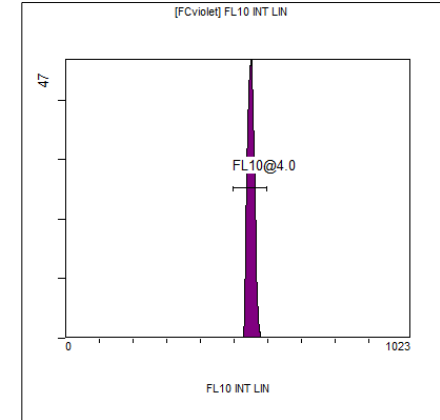
[FCred] FL8 INT LIN

Region	Number	HP X-CV	X-Mean
ALL	1389	1.10	504
FL8@3.0	1371	1.10	508



[FCviolet] FL9 INT LIN

Region	Number	HP X-CV	X-Mean
ALL	1300	0.64	518
FL9@4.0	1297	0.64	518



[FCviolet] FL10 INT LIN

Region	Number	HP X-CV	X-Mean
ALL	1300	1.70	549
FL10@4.0	1298	1.70	550