

Institution:

Protocol :Alignment Blue Red Violet\_ALIGN.pro

Listmode Replay: New Protocol

Analysis Date: 13-Jan-2014, 09:54:51

Settings File: Alignment Blue Red Violet\_ALIGN.pro, 25-Nov-2013, 09:47:20

Listmode File: Gallios FlowCheck 2014-01-13 003.LMD

Run Date: 13-Jan-14, 09:52:05

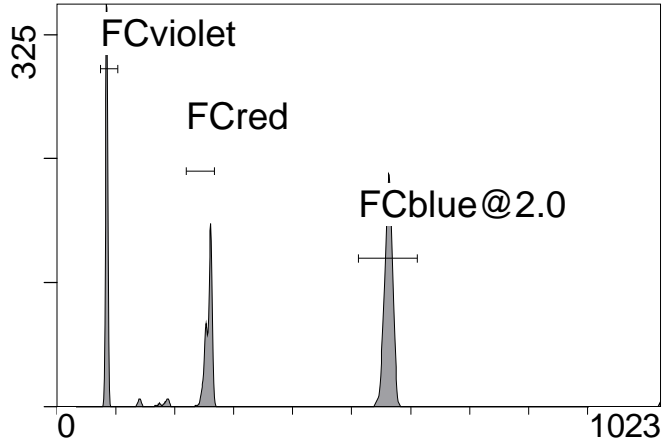
Sample ID: Gallios FlowCheck

User ID: Lopez

Acquisition Time/Events: 79.1s / 6645 (PROTOCOL)

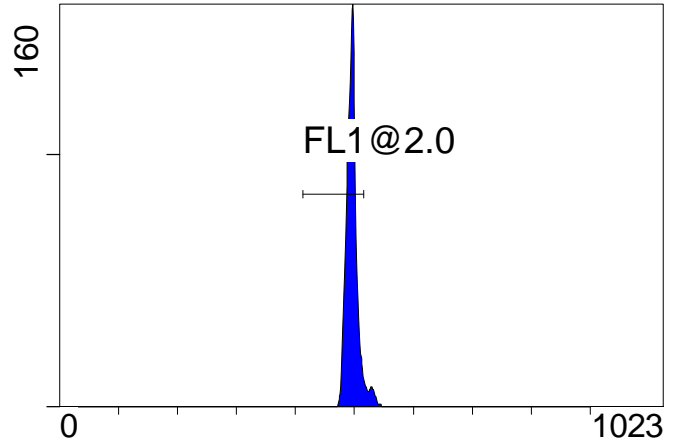
Instrument SN: AN11038 Software Version: Gallios 1.2

[Ungated] FS INT LIN



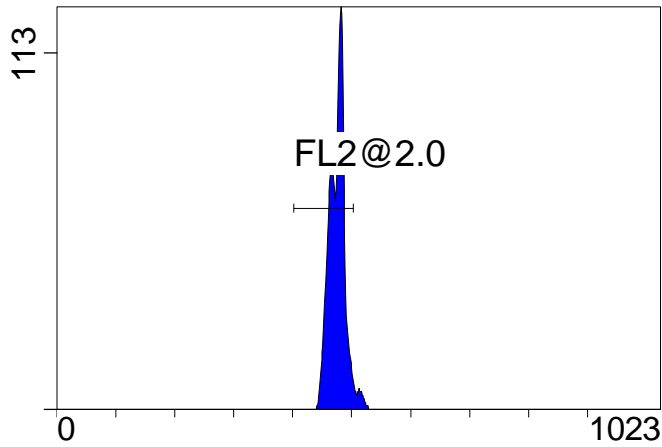
FS INT LIN

(3000) [FCblue@2.0] FL1 INT LIN



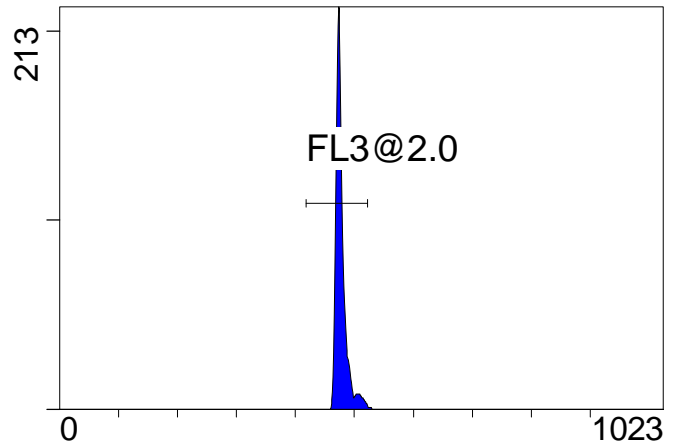
FL1 INT LIN

[FCblue@2.0] FL2 INT LIN



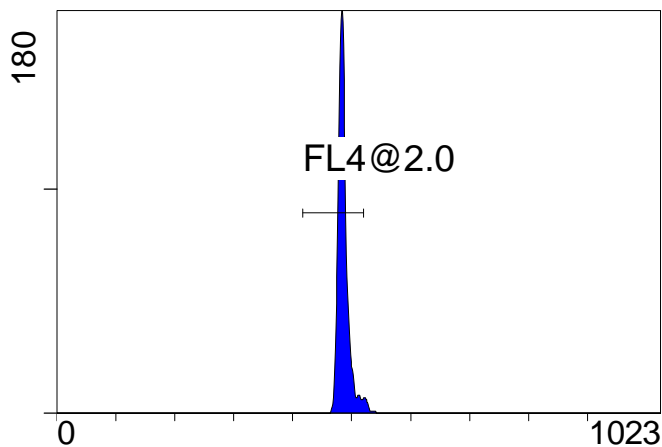
FL2 INT LIN

[FCblue@2.0] FL3 INT LIN



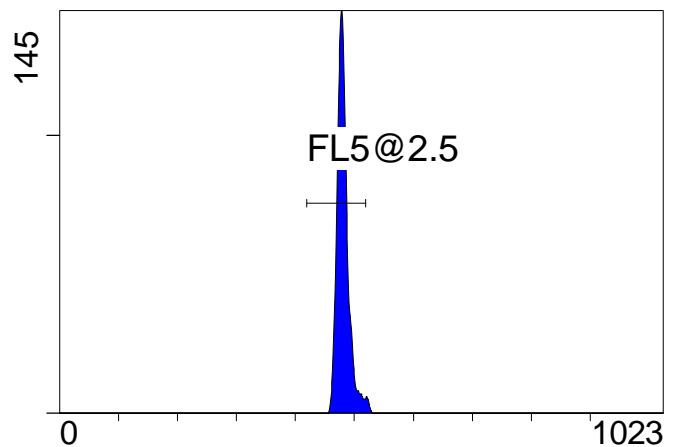
FL3 INT LIN

[FCblue@2.0] FL4 INT LIN



FL4 INT LIN

[FCblue@2.0] FL5 INT LIN



FL5 INT LIN

Institution:

Protocol :Alignment Blue Red Violet\_ALIGN.pro

Listmode Replay: New Protocol

Analysis Date: 13-Jan-2014, 09:54:51

Settings File: Alignment Blue Red Violet\_ALIGN.pro, 25-Nov-2013, 09:47:20

Listmode File: Gallios FlowCheck 2014-01-13 003.LMD

Run Date: 13-Jan-14, 09:52:05

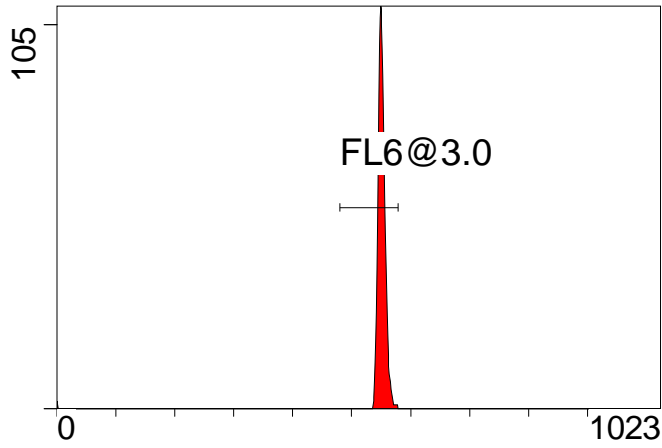
Sample ID: Gallios FlowCheck

User ID: Lopez

Acquisition Time/Events: 79.1s / 6645 (PROTOCOL)

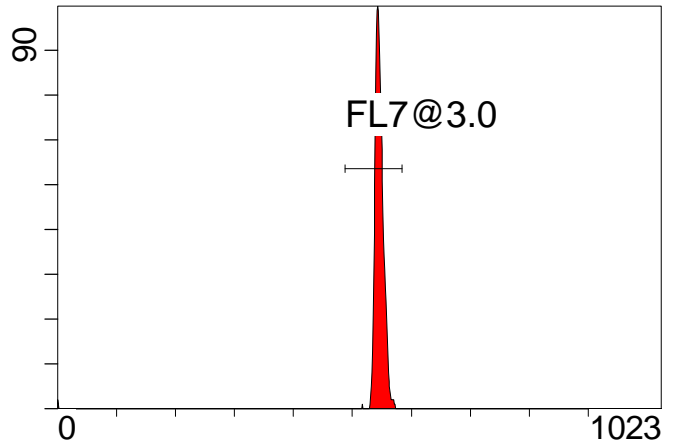
Instrument SN: AN11038 Software Version: Gallios 1.2

[FCred] FL6 INT LIN



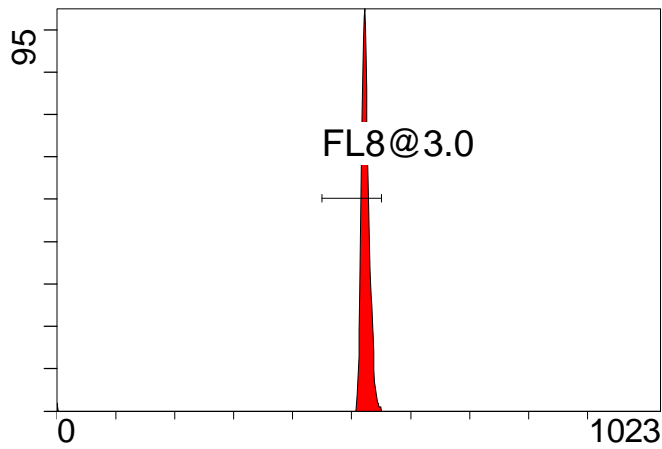
FL6 INT LIN

[FCred] FL7 INT LIN



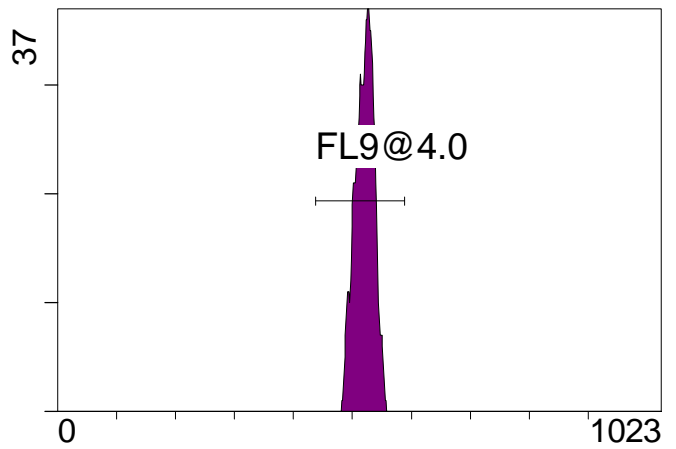
FL7 INT LIN

[FCred] FL8 INT LIN



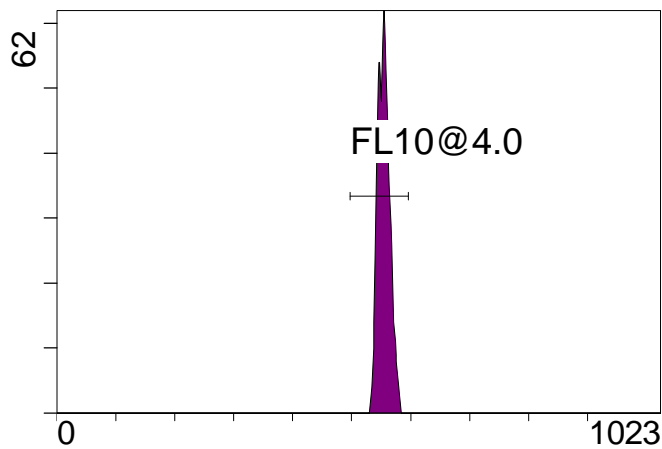
FL8 INT LIN

[FCviolet] FL9 INT LIN



FL9 INT LIN

[FCviolet] FL10 INT LIN



FL10 INT LIN

**Statistical Analysis**

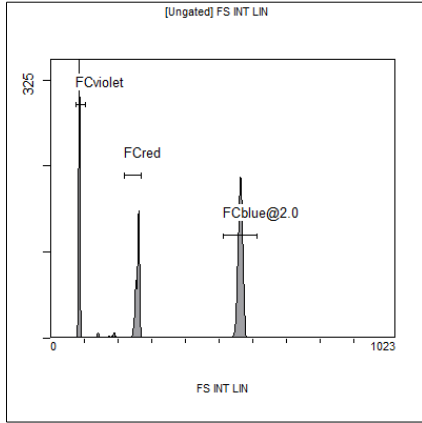
**PROGRAM INFORMATION**

File:- Gallios FlowCheck 2014-01-13 003.LMD				
Gate:- FCblue@2.0 [FCblue@2.0]				
Compensation:-				
Region	Number	X-Mean	X-HPCV	
ALL	3140	497	1.29	
ALL	3140	476	0.87	
ALL	3140	482	1.45	
ALL	3140	487	1.07	
ALL	3140	478	0.95	
FL1@2.0	2923	495	1.29	
FL2@2.0	2983	474	0.87	
FL3@2.0	3100	478	0.95	
FL4@2.0	3028	486	1.07	
FL5@2.5	3051	481	1.45	

File:- Gallios FlowCheck 2014-01-13 003.LMD				
Gate:- FCred [FCred]				
Compensation:-				
Region	Number	X-Mean	X-HPCV	
ALL	1558	546	0.77	
ALL	1558	541	0.88	
ALL	1558	519	0.92	
FL6@3.0	1527	551	0.77	
FL7@3.0	1532	546	0.88	
FL8@3.0	1526	523	0.92	

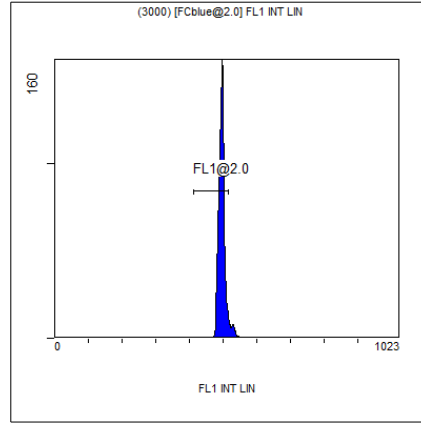
File:- Gallios FlowCheck 2014-01-13 003.LMD				
Gate:- FCviolet [FCviolet]				
Compensation:-				
Region	Number	X-Mean	X-HPCV	
ALL	1612	519	2.45	
ALL	1612	553	1.49	
FL10@4.0	1607	555	1.49	
FL9@4.0	1608	520	2.45	

File:- Gallios FlowCheck 2014-01-13 003.LMD				
Gate:- Ungated				
Compensation:-				
Region	Number	X-Mean	X-HPCV	
ALL	6645	362	1.19	
FCblue@2.0	3140	563	1.04	
FCred	1558	257	0.87	
FCviolet	1612	84.4	1.19	



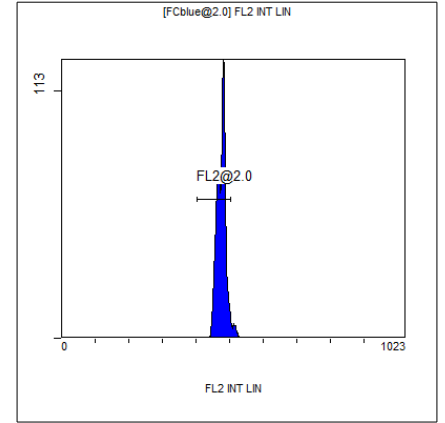
[Ungated] FS INT LIN

Region	Number	HP	X-CV	X-Mean
ALL	6645	1.19	362	
FCblue@2.0	3140	1.04	563	
FCred	1558	0.87	257	
FCviolet	1612	1.19	84.4	



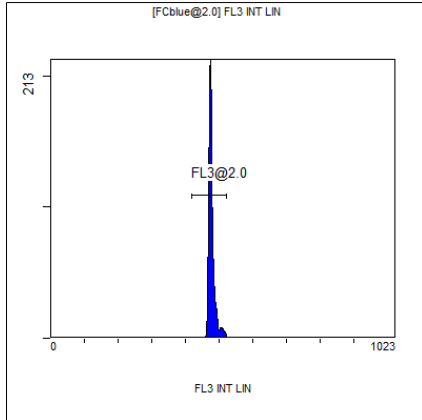
(3000) [FCblue@2.0] FL1 INT LIN

Region	Number	HP	X-CV	X-Mean
ALL	3140	1.29	497	
FL1@2.0	2923	1.29	495	



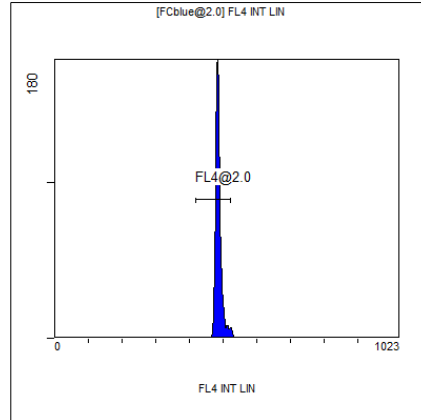
[FCblue@2.0] FL2 INT LIN

Region	Number	HP	X-CV	X-Mean
ALL	3140	0.87	476	
FL2@2.0	2983	0.87	474	



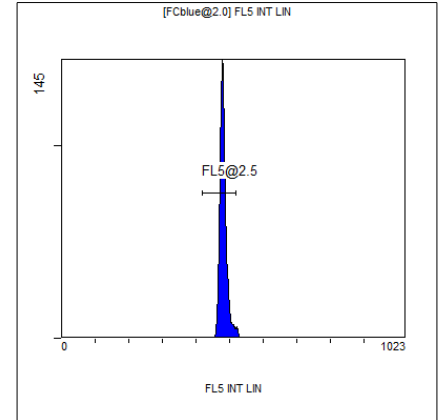
[FCblue@2.0] FL3 INT LIN

Region	Number	HP	X-CV	X-Mean
ALL	3140	0.95	478	
FL3@2.0	3100	0.95	478	



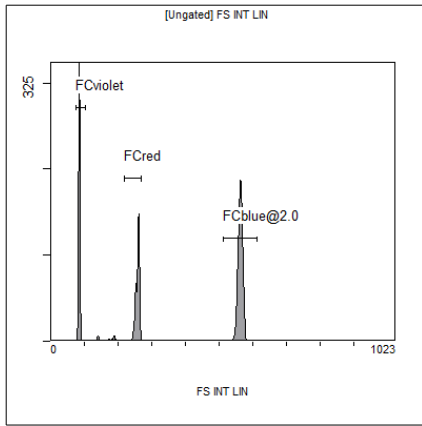
[FCblue@2.0] FL4 INT LIN

Region	Number	HP	X-CV	X-Mean
ALL	3140	1.07	487	
FL4@2.0	3028	1.07	486	



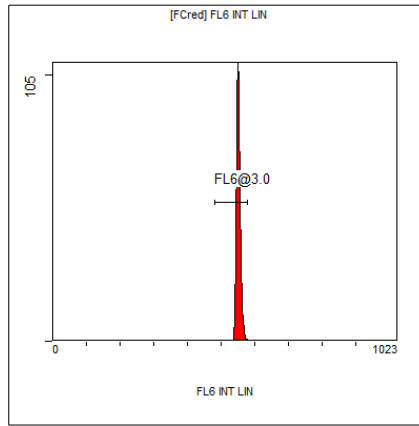
[FCblue@2.0] FL5 INT LIN

Region	Number	HP	X-CV	X-Mean
ALL	3140	1.45	482	
FL5@2.5	3051	1.45	481	



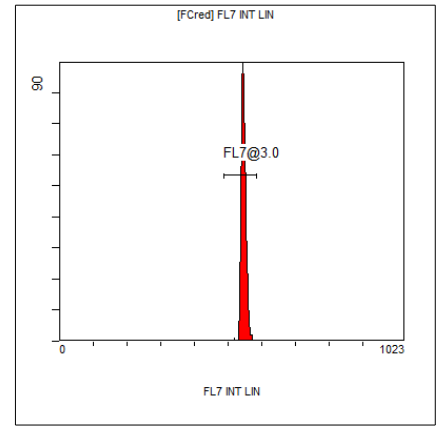
[Ungated] FS INT LIN

Region	Number	HP	X-CV	X-Mean
ALL	6645	1.19		362
FCblue@2.0	3140	1.04		563
FCred	1558	0.87		257
FCviolet	1612	1.19		84.4



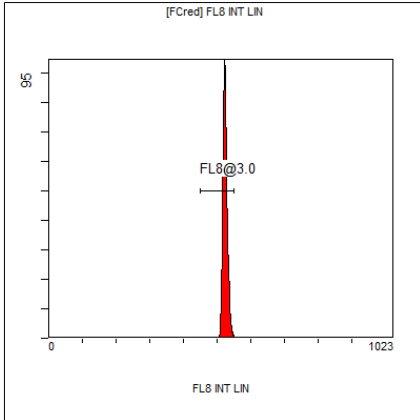
[FCred] FL6 INT LIN

Region	Number	HP	X-CV	X-Mean
ALL	1558	0.77		546
FL6@3.0	1527	0.77		551



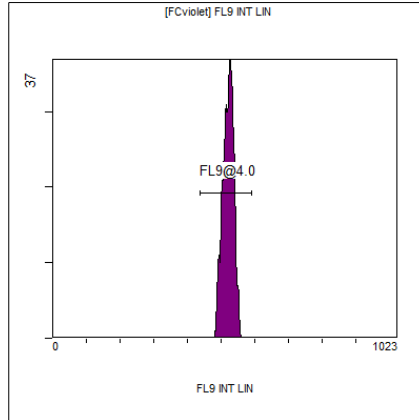
[FCred] FL7 INT LIN

Region	Number	HP	X-CV	X-Mean
ALL	1558	0.88		541
FL7@3.0	1532	0.88		546



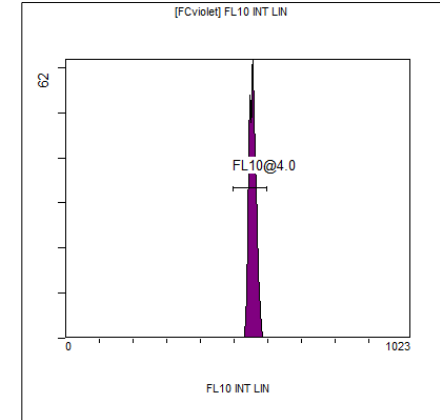
[FCred] FL8 INT LIN

Region	Number	HP	X-CV	X-Mean
ALL	1558	0.92		519
FL8@3.0	1526	0.92		523



[FCviolet] FL9 INT LIN

Region	Number	HP	X-CV	X-Mean
ALL	1612	2.45		519
FL9@4.0	1608	2.45		520



[FCviolet] FL10 INT LIN

Region	Number	HP	X-CV	X-Mean
ALL	1612	1.49		553
FL10@4.0	1607	1.49		555