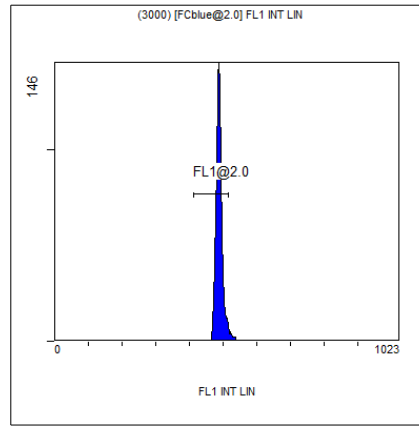


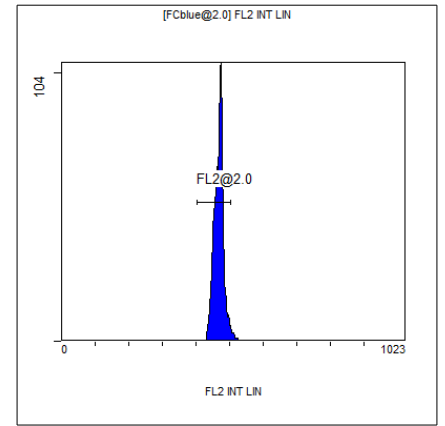
[Ungated] FS INT LIN

Region	Number	HP	X-CV	X-Mean
ALL	6224	1.32		364
FCblue@2.0	3000	1.18		553
FCred	1584	1.13		252
FCviolet	1347	1.32		82.5



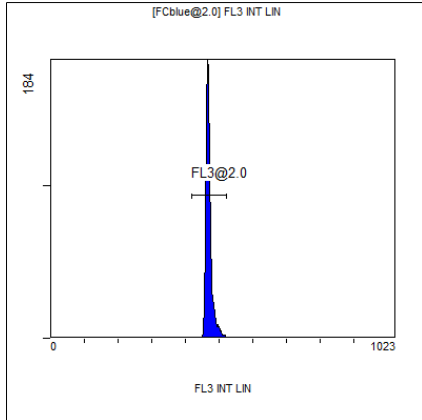
(3000) [FCblue@2.0] FL1 INT LIN

Region	Number	HP	X-CV	X-Mean
ALL	3000	1.24		489
FL1@2.0	2873	1.24		488



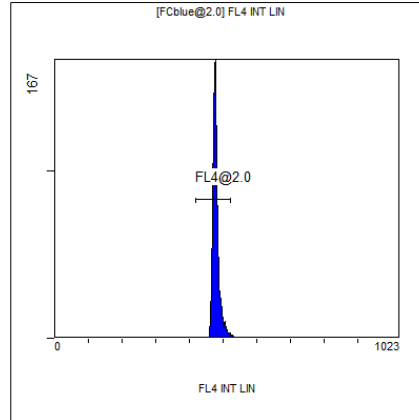
[FCblue@2.0] FL2 INT LIN

Region	Number	HP	X-CV	X-Mean
ALL	3000	1.09		469
FL2@2.0	2901	1.09		467



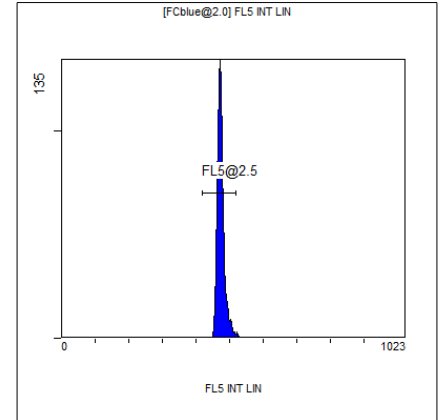
[FCblue@2.0] FL3 INT LIN

Region	Number	HP	X-CV	X-Mean
ALL	3000	1.07		471
FL3@2.0	2975	1.07		470



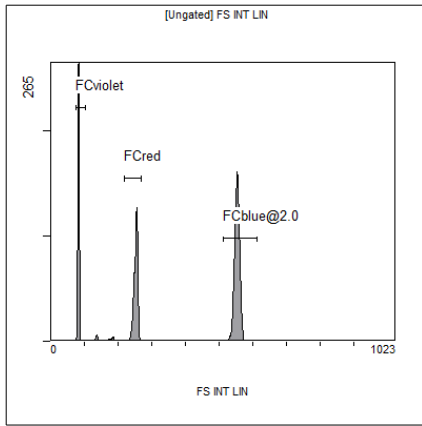
[FCblue@2.0] FL4 INT LIN

Region	Number	HP	X-CV	X-Mean
ALL	3000	1.11		480
FL4@2.0	2940	1.11		478



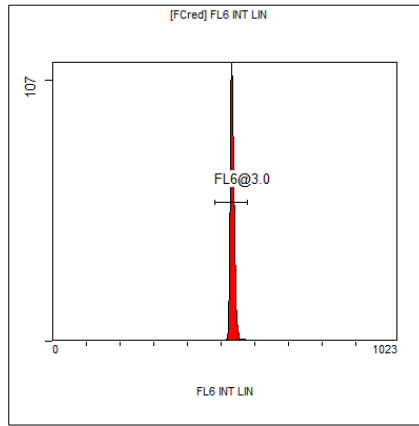
[FCblue@2.0] FL5 INT LIN

Region	Number	HP	X-CV	X-Mean
ALL	3000	1.58		475
FL5@2.5	2945	1.58		474



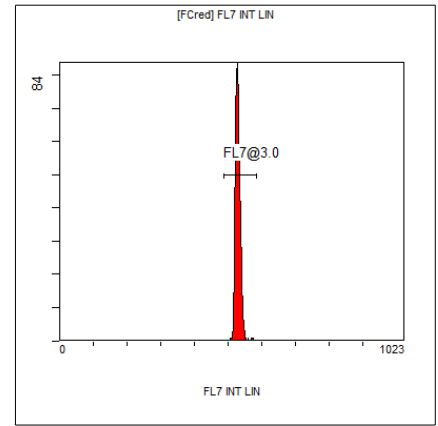
[Ungated] FS INT LIN

Region	Number	HP	X-CV	X-Mean
ALL	6224	1.32		364
FCblue@2.0	3000	1.18		553
FCred	1584	1.13		252
FCviolet	1347	1.32		82.5



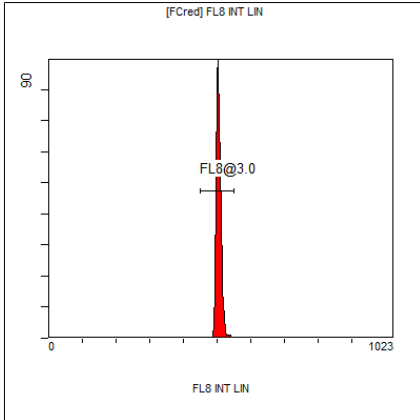
[FCred] FL6 INT LIN

Region	Number	HP	X-CV	X-Mean
ALL	1584	1.02		530
FL6@3.0	1568	1.02		533



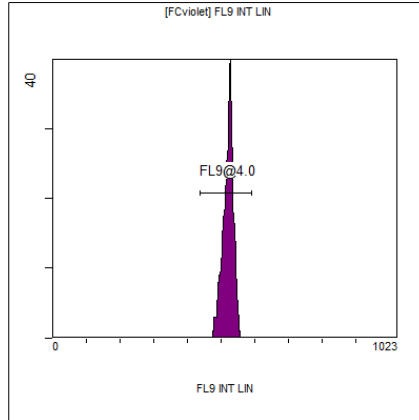
[FCred] FL7 INT LIN

Region	Number	HP	X-CV	X-Mean
ALL	1584	1.09		525
FL7@3.0	1565	1.09		529



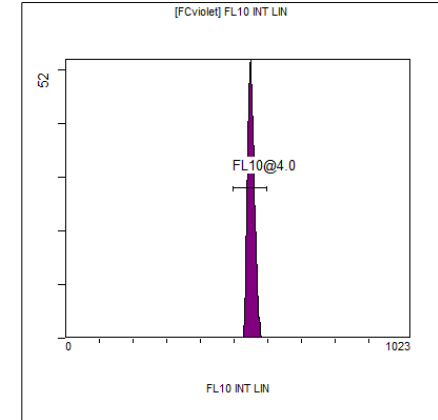
[FCred] FL8 INT LIN

Region	Number	HP	X-CV	X-Mean
ALL	1584	1.10		501
FL8@3.0	1566	1.10		505



[FCviolet] FL9 INT LIN

Region	Number	HP	X-CV	X-Mean
ALL	1347	1.17		520
FL9@4.0	1347	1.17		520



[FCviolet] FL10 INT LIN

Region	Number	HP	X-CV	X-Mean
ALL	1347	1.47		551
FL10@4.0	1347	1.47		551