

Institution: IRMB

Protocol :Alignment Blue Red Violet_ALIGN.pro

Listmode Replay: New Protocol

Analysis Date: 31-Mar-2014, 15:00:02

Settings File: Alignment Blue Red Violet_ALIGN.pro, 31-Mar-2014, 14:57:34

Listmode File: Gallios Flow Check 2014-03-31 049.LMD

Run Date: 31-Mar-14, 14:57:42

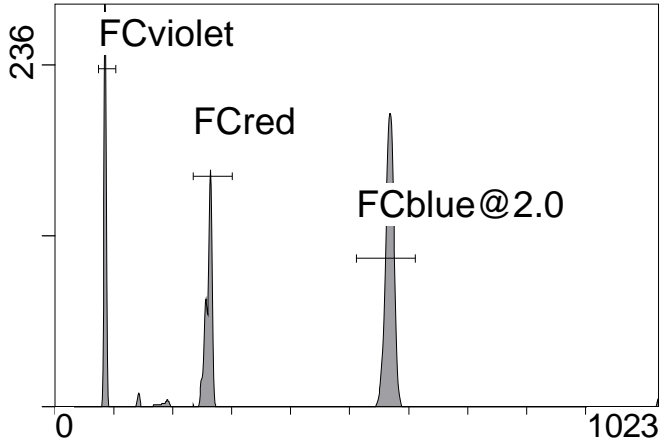
Sample ID: Gallios Flow Check

User ID: Lopez

Acquisition Time/Events: 77.4s / 5884 (PROTOCOL)

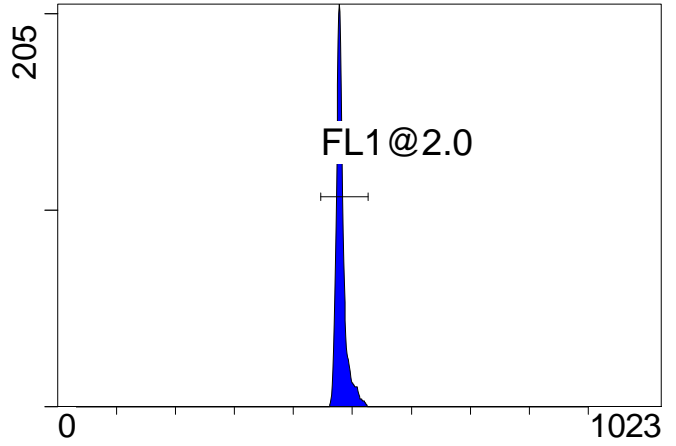
Instrument SN: AN11038 Software Version: Gallios 1.2

[Ungated] FS INT LIN



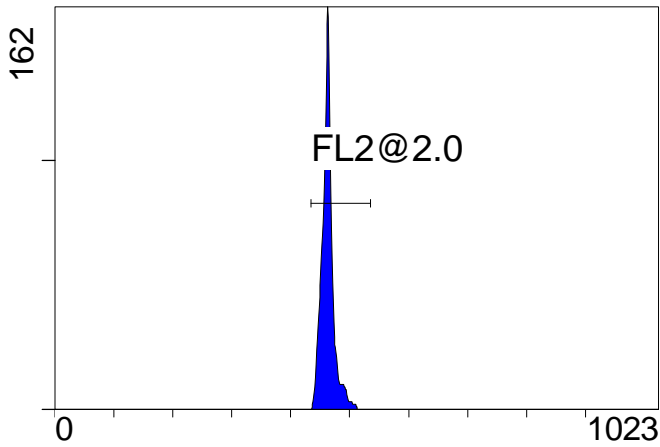
FS INT LIN

(3000) [FCblue@2.0] FL1 INT LIN



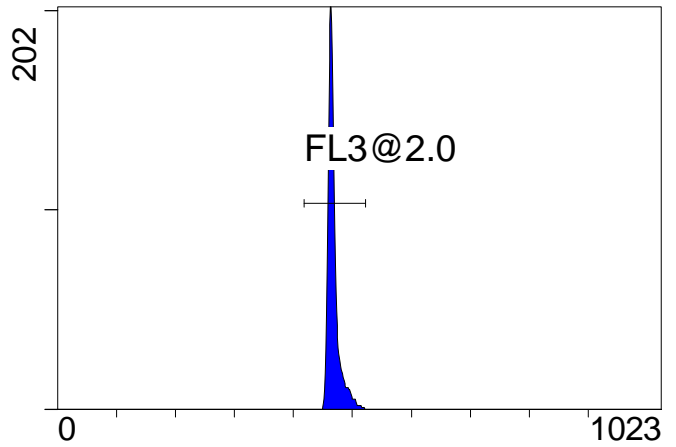
FL1 INT LIN

[FCblue@2.0] FL2 INT LIN



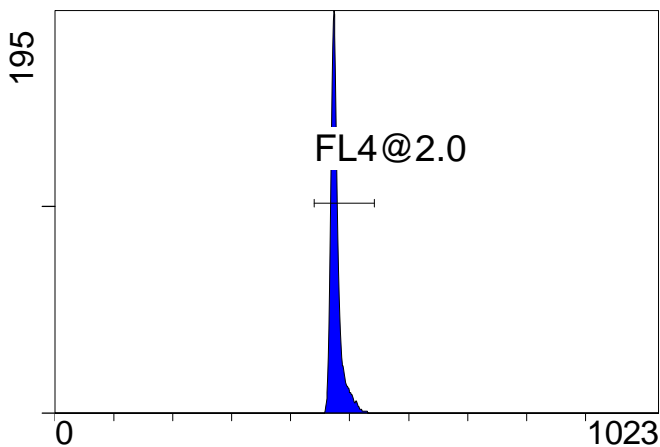
FL2 INT LIN

[FCblue@2.0] FL3 INT LIN



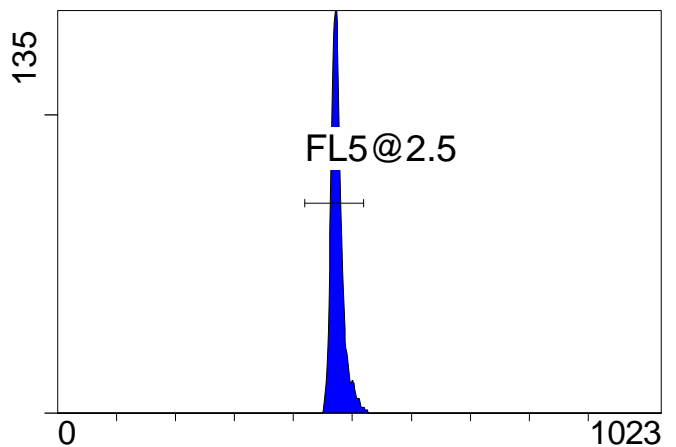
FL3 INT LIN

[FCblue@2.0] FL4 INT LIN



FL4 INT LIN

[FCblue@2.0] FL5 INT LIN



FL5 INT LIN

Institution: IRMB

Protocol :Alignment Blue Red Violet_ALIGN.pro

Listmode Replay: New Protocol

Analysis Date: 31-Mar-2014, 15:00:02

Settings File: Alignment Blue Red Violet_ALIGN.pro, 31-Mar-2014, 14:57:34

Listmode File: Gallios Flow Check 2014-03-31 049.LMD

Run Date: 31-Mar-14, 14:57:42

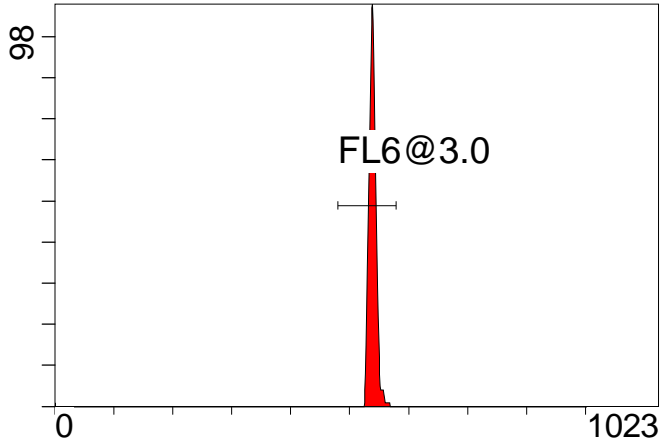
Sample ID: Gallios Flow Check

User ID: Lopez

Acquisition Time/Events: 77.4s / 5884 (PROTOCOL)

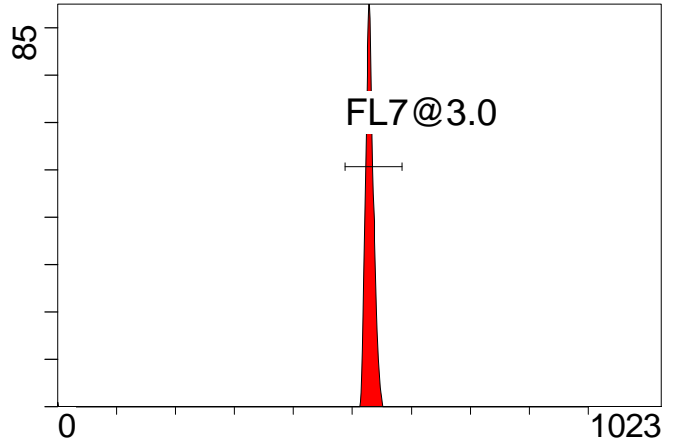
Instrument SN: AN11038 Software Version: Gallios 1.2

[FCred] FL6 INT LIN



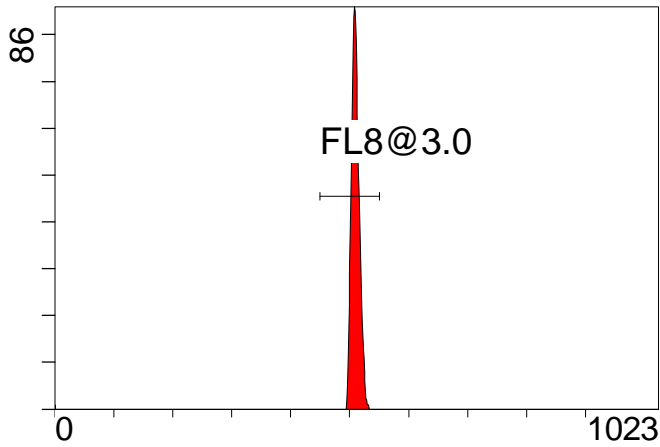
FL6 INT LIN

[FCred] FL7 INT LIN



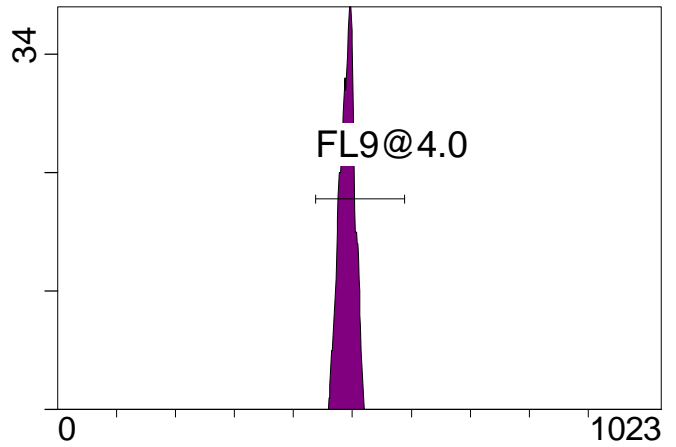
FL7 INT LIN

[FCred] FL8 INT LIN



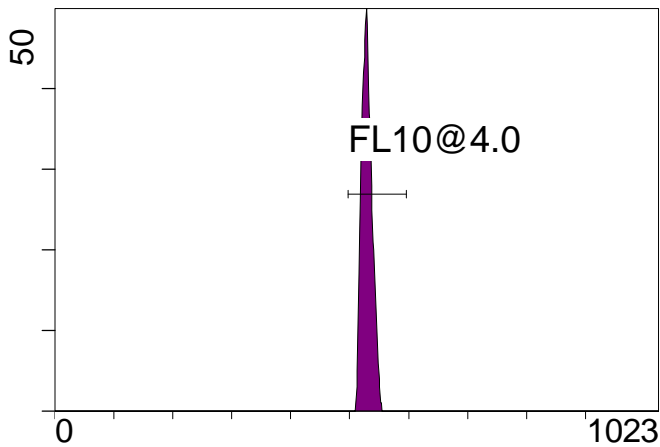
FL8 INT LIN

[FCviolet] FL9 INT LIN



FL9 INT LIN

[FCviolet] FL10 INT LIN



FL10 INT LIN

Statistical Analysis

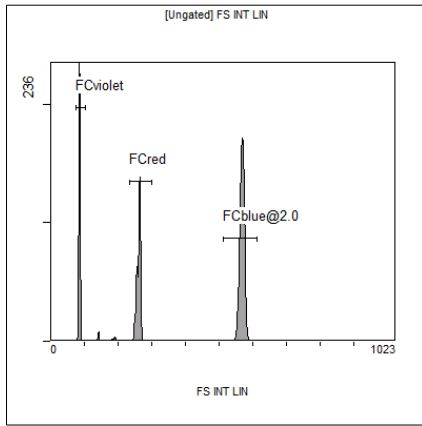
PROGRAM INFORMATION

File:- Gallios Flow Check 2014-03-31 049.LMD				
Gate:- FCblue@2.0 [FCblue@2.0]				
Compensation:-				
Region	Number	X-Mean	X-HPCV	
ALL	3000	481	0.81	
ALL	3000	478	1.00	
ALL	3000	463	0.89	
ALL	3000	476	1.38	
ALL	3000	468	0.93	
FL1@2.0	2976	481	0.81	
FL2@2.0	2993	464	0.89	
FL3@2.0	2983	468	0.93	
FL4@2.0	2990	478	1.00	
FL5@2.5	2958	475	1.38	

File:- Gallios Flow Check 2014-03-31 049.LMD				
Gate:- FCred [FCred]				
Compensation:-				
Region	Number	X-Mean	X-HPCV	
ALL	1465	535	0.86	
ALL	1465	526	0.88	
ALL	1465	506	0.88	
FL6@3.0	1447	539	0.86	
FL7@3.0	1448	530	0.88	
FL8@3.0	1446	510	0.88	

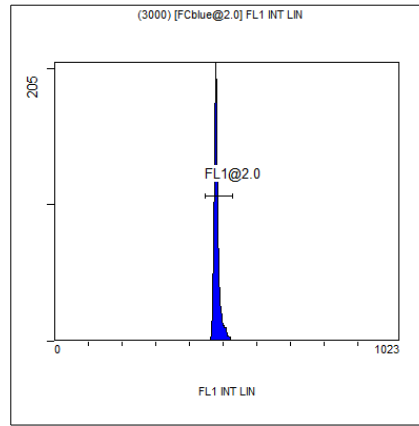
File:- Gallios Flow Check 2014-03-31 049.LMD				
Gate:- FCviolet [FCviolet]				
Compensation:-				
Region	Number	X-Mean	X-HPCV	
ALL	1140	490	1.95	
ALL	1140	528	1.53	
FL10@4.0	1136	530	1.53	
FL9@4.0	1136	491	1.95	

File:- Gallios Flow Check 2014-03-31 049.LMD				
Gate:- Ungated				
Compensation:-				
Region	Number	X-Mean	X-HPCV	
ALL	5884	387	1.12	
FCblue@2.0	3000	568	1.09	
FCred	1465	260	0.81	
FCviolet	1140	85.2	1.12	



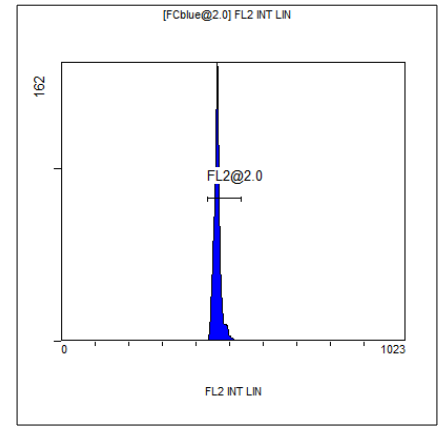
[Ungated] FS INT LIN

Region	Number	HP X-CV	X-Mean
ALL	5884	1.12	387
FCblue@2.0	3000	1.09	568
FCred	1465	0.81	260
FCviolet	1140	1.12	85.2



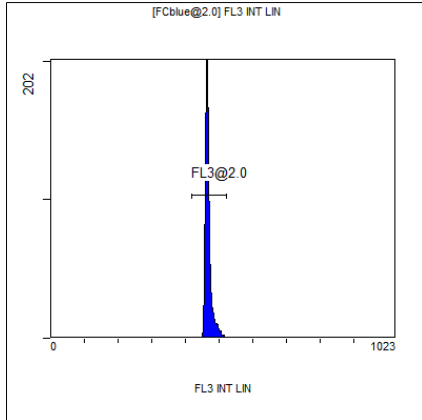
(3000) [FCblue@2.0] FL1 INT LIN

Region	Number	HP X-CV	X-Mean
ALL	3000	0.81	481
FL1@2.0	2976	0.81	481



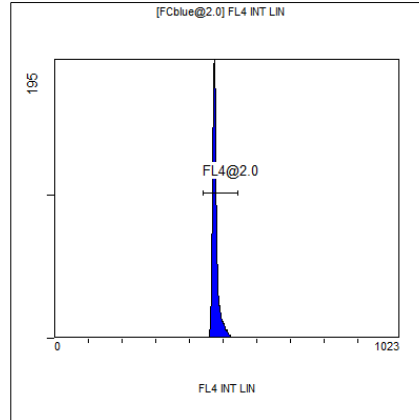
[FCblue@2.0] FL2 INT LIN

Region	Number	HP X-CV	X-Mean
ALL	3000	0.89	463
FL2@2.0	2993	0.89	464



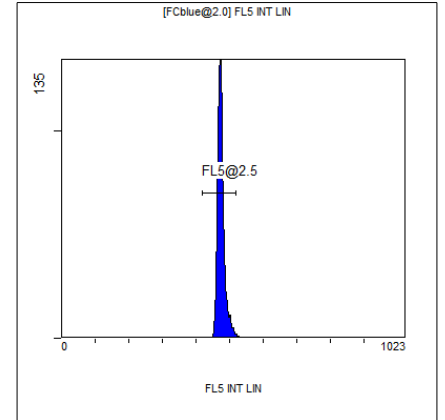
[FCblue@2.0] FL3 INT LIN

Region	Number	HP X-CV	X-Mean
ALL	3000	0.93	468
FL3@2.0	2983	0.93	468



[FCblue@2.0] FL4 INT LIN

Region	Number	HP X-CV	X-Mean
ALL	3000	1.00	478
FL4@2.0	2990	1.00	478



[FCblue@2.0] FL5 INT LIN

Region	Number	HP X-CV	X-Mean
ALL	3000	1.38	476
FL5@2.5	2958	1.38	475