

Institution: IRB

Protocol :Alignment Blue Red Violet_ALIGN.pro

Listmode Replay: New Protocol

Analysis Date: 07-Jul-2014, 09:28:42

Settings File: Alignment Blue Red Violet_ALIGN.pro, 30-Jun-2014, 09:49:18

Listmode File: Gallios FlowCheck 2014-07-07 045.LMD

Run Date: 07-Jul-14, 09:24:47

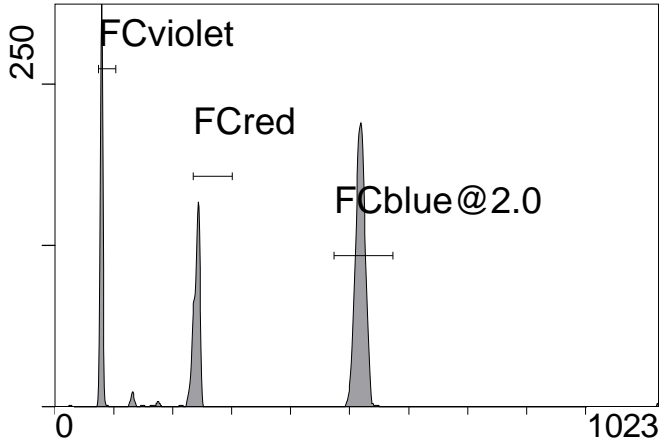
Sample ID: Gallios FlowCheck

User ID: duperray

Acquisition Time/Events: 32.0s / 6866 (PROTOCOL)

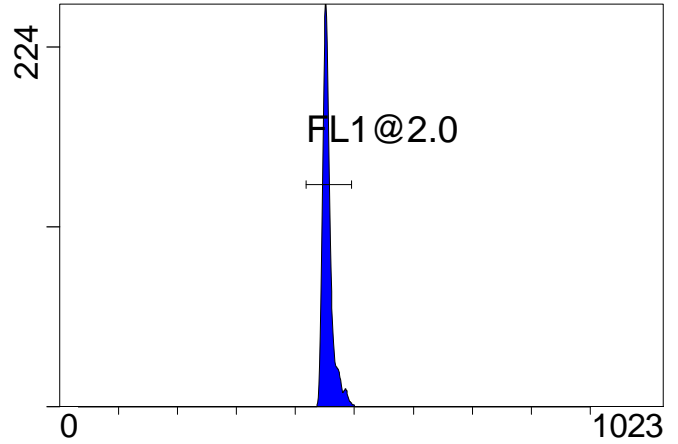
Instrument SN: AN11038 Software Version: Gallios 1.2

[Ungated] FS INT LIN



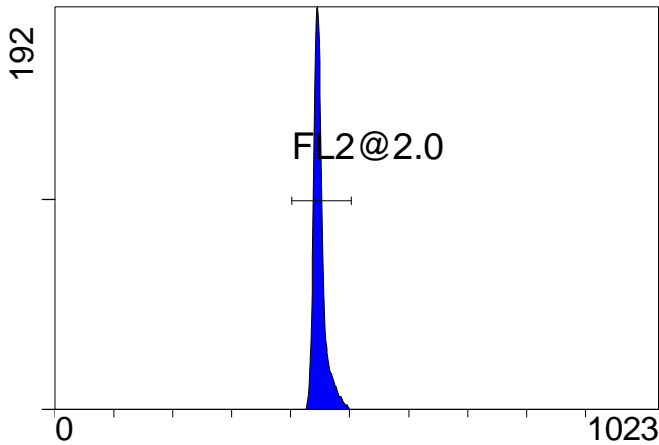
FS INT LIN

(3000) [FCblue@2.0] FL1 INT LIN



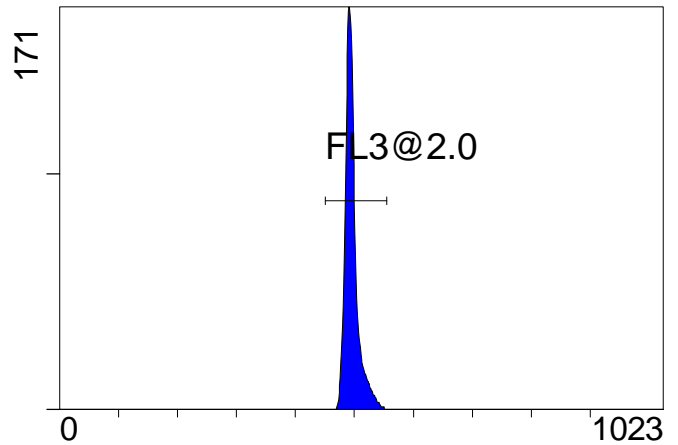
FL1 INT LIN

[FCblue@2.0] FL2 INT LIN



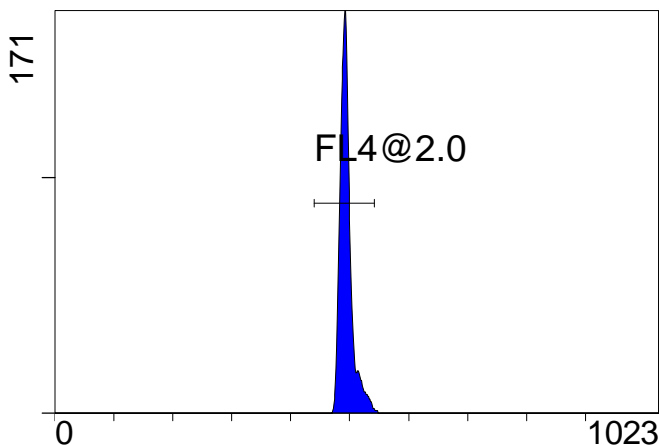
FL2 INT LIN

[FCblue@2.0] FL3 INT LIN



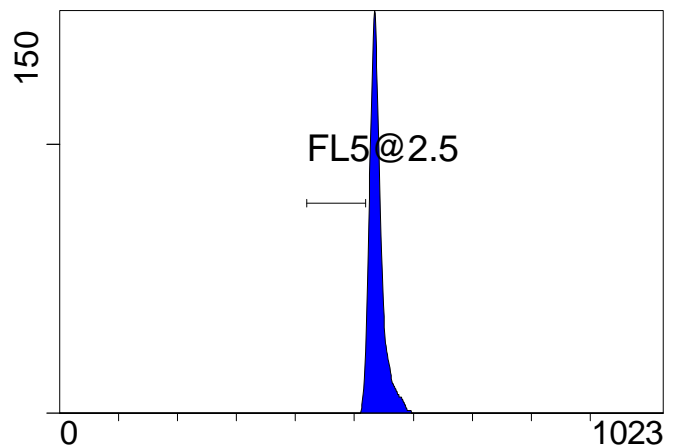
FL3 INT LIN

[FCblue@2.0] FL4 INT LIN



FL4 INT LIN

[FCblue@2.0] FL5 INT LIN



FL5 INT LIN

Institution: IRB

Protocol :Alignment Blue Red Violet_ALIGN.pro

Listmode Replay: New Protocol

Analysis Date: 07-Jul-2014, 09:28:42

Settings File: Alignment Blue Red Violet_ALIGN.pro, 30-Jun-2014, 09:49:18

Listmode File: Gallios FlowCheck 2014-07-07 045.LMD

Run Date: 07-Jul-14, 09:24:47

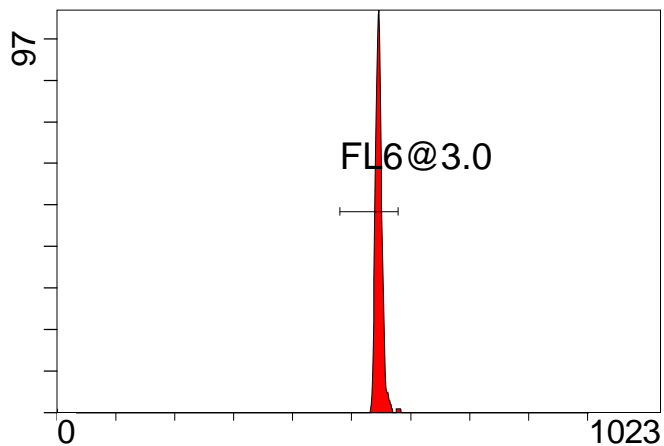
Sample ID: Gallios FlowCheck

User ID: duperray

Acquisition Time/Events: 32.0s / 6866 (PROTOCOL)

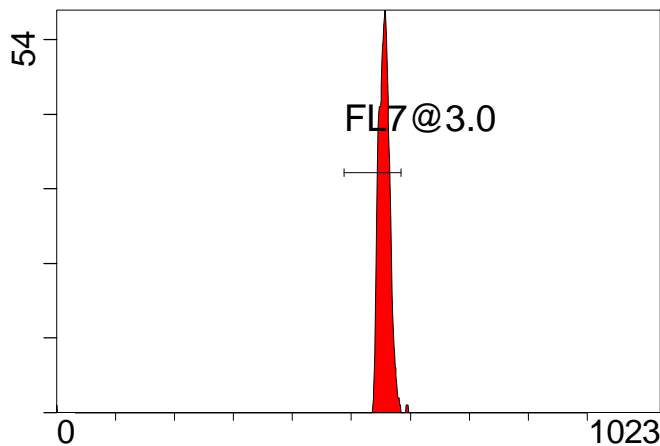
Instrument SN: AN11038 Software Version: Gallios 1.2

[FCred] FL6 INT LIN



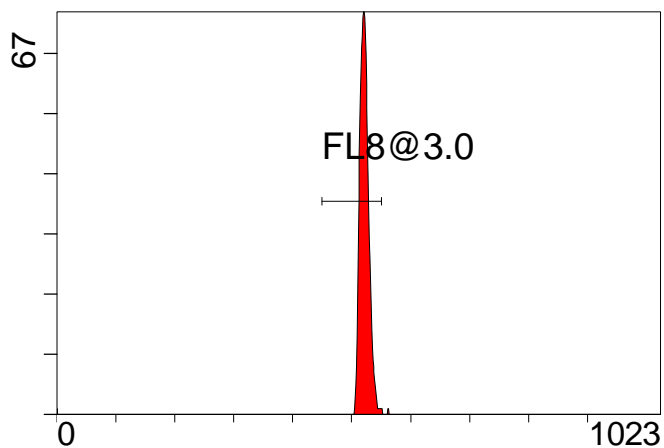
FL6 INT LIN

[FCred] FL7 INT LIN



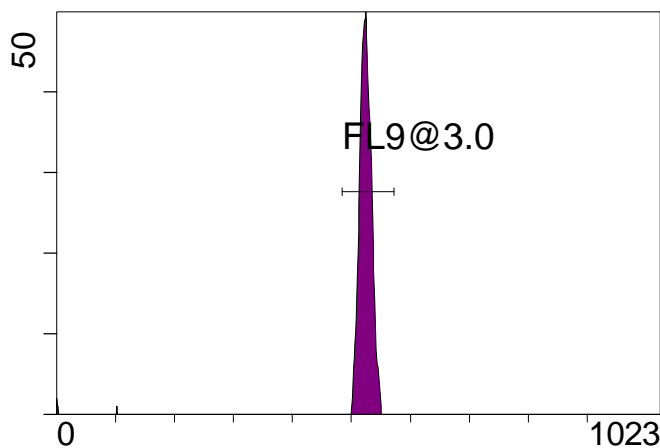
FL7 INT LIN

[FCred] FL8 INT LIN



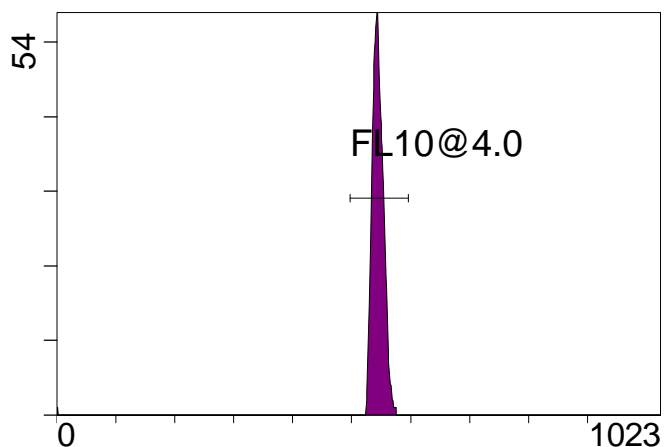
FL8 INT LIN

[FCviolet] FL9 INT LIN



FL9 INT LIN

[FCviolet] FL10 INT LIN



FL10 INT LIN

Statistical Analysis

PROGRAM INFORMATION

File:- Gallios FlowCheck 2014-07-07 045.LMD

Gate:- FCblue@2.0 [FCblue@2.0]

Compensation:-

Region	Number	X-Mean	X-HPCV
ALL	3611	496	1.31
ALL	3611	449	1.28
ALL	3611	455	1.18
ALL	3611	496	1.38
ALL	3611	540	1.44
FL1@2.0	3571	455	1.18
FL2@2.0	3592	449	1.28
FL3@2.0	3589	496	1.31
FL4@2.0	3568	495	1.38
FL5@2.5	95	513	0.25

File:- Gallios FlowCheck 2014-07-07 045.LMD

Gate:- FCred [FCred]

Compensation:-

Region	Number	X-Mean	X-HPCV
ALL	1351	519	1.40
ALL	1351	544	0.84
ALL	1351	554	1.59
FL6@3.0	1322	547	0.84
FL7@3.0	1306	556	1.59
FL8@3.0	1309	522	1.40

File:- Gallios FlowCheck 2014-07-07 045.LMD

Gate:- FCviolet [FCviolet]

Compensation:-

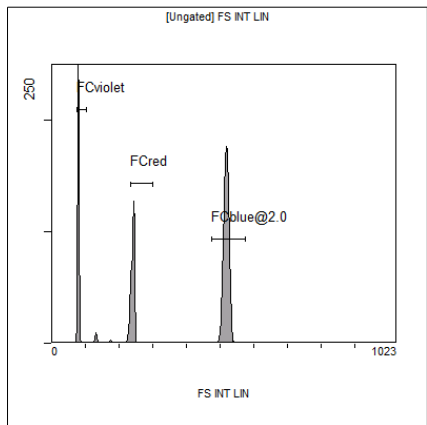
Region	Number	X-Mean	X-HPCV
ALL	1342	513	1.71
ALL	1342	537	1.43
FL10@4.0	1318	545	1.43
FL9@3.0	1306	524	1.71

File:- Gallios FlowCheck 2014-07-07 045.LMD

Gate:- Ungated

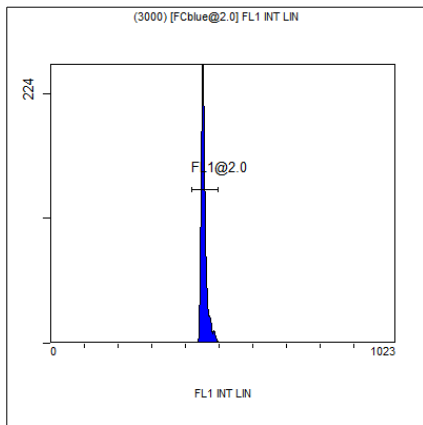
Compensation:-

Region	Number	X-Mean	X-HPCV
ALL	6866	357	1.75
FCblue@2.0	3611	518	1.46
FCred	1351	242	1.22
FCviolet	1342	79.2	1.75



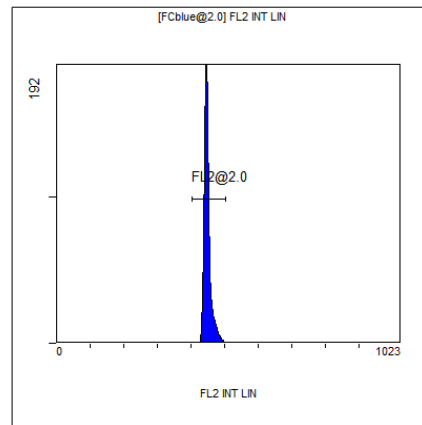
[Ungated] FS INT LIN

Region	Number	HP X-CV	X-Mean
ALL	6866	1.75	357
FCblue@2.0	3611	1.46	518
FCred	1351	1.22	242
FCviolet	1342	1.75	79.2



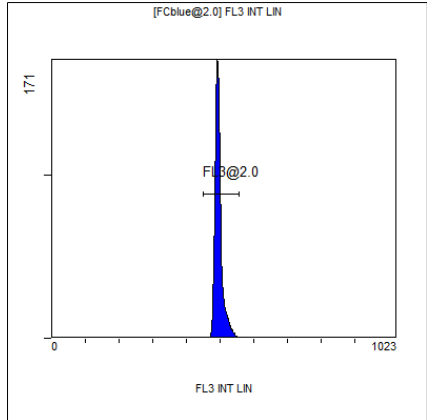
(3000) [FCblue@2.0] FL1 INT LIN

Region	Number	HP X-CV	X-Mean
ALL	3611	1.18	455
FL1@2.0	3571	1.18	455



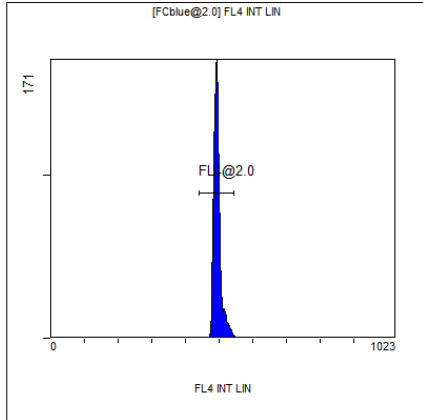
[FCblue@2.0] FL2 INT LIN

Region	Number	HP X-CV	X-Mean
ALL	3611	1.28	449
FL2@2.0	3592	1.28	449



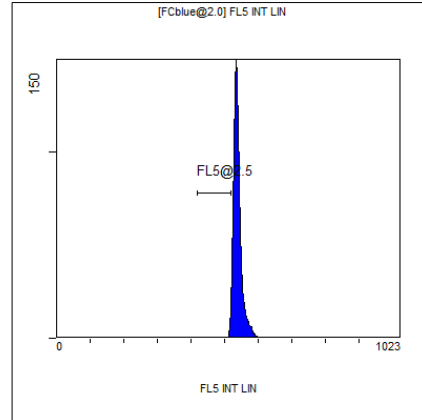
[FCblue@2.0] FL3 INT LIN

Region	Number	HP X-CV	X-Mean
ALL	3611	1.31	496
FL3@2.0	3589	1.31	496



[FCblue@2.0] FL4 INT LIN

Region	Number	HP X-CV	X-Mean
ALL	3611	1.38	496
FL4@2.0	3568	1.38	495



[FCblue@2.0] FL5 INT LIN

Region	Number	HP X-CV	X-Mean
ALL	3611	1.44	540
FL5@2.5	95	0.25	513