

Institution: IRB

Protocol :Alignment Blue Red Violet_ALIGN.pro

Listmode Replay: New Protocol

Analysis Date: 15-Jul-2014, 08:58:33

Settings File: Alignment Blue Red Violet_ALIGN.pro, 07-Jul-2014, 09:29:53

Listmode File: Gallios FlowCheck 2014-07-15 049.LMD

Run Date: 15-Jul-14, 08:56:40

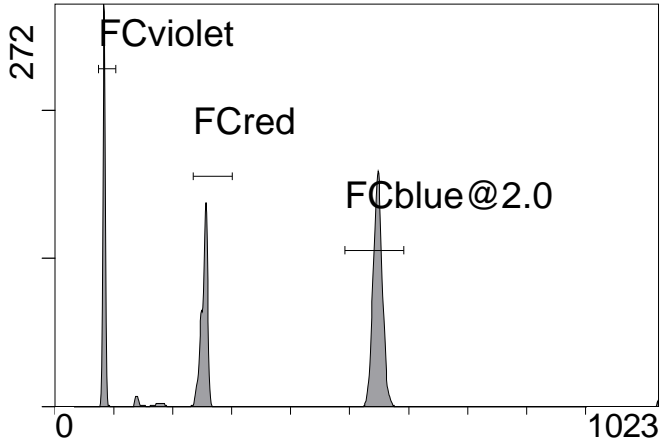
Sample ID: Gallios FlowCheck

User ID: duperray

Acquisition Time/Events: 28.5s / 6405 (PROTOCOL)

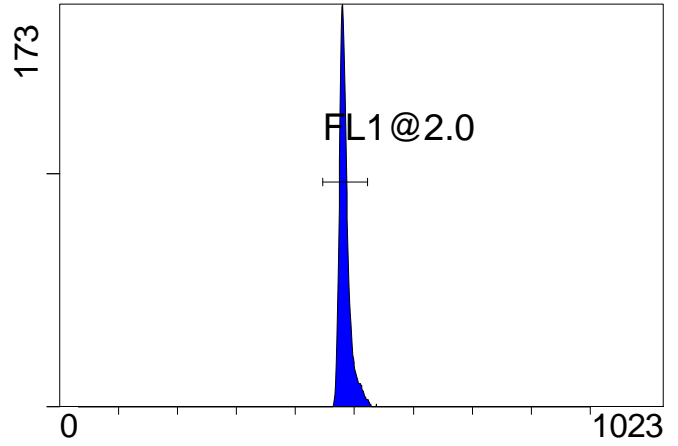
Instrument SN: AN11038 Software Version: Gallios 1.2

[Ungated] FS INT LIN



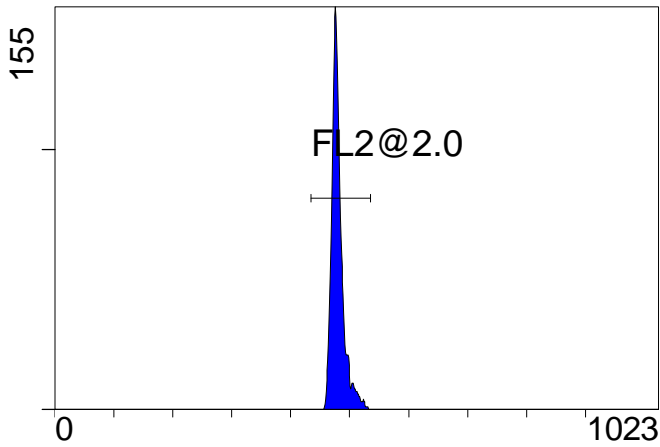
FS INT LIN

(3000) [FCblue@2.0] FL1 INT LIN



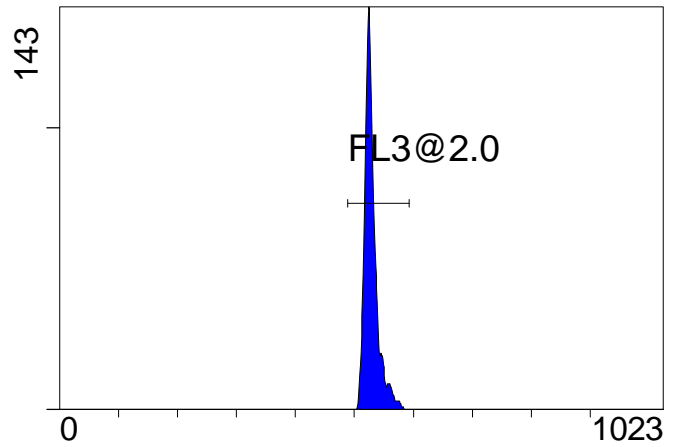
FL1 INT LIN

[FCblue@2.0] FL2 INT LIN



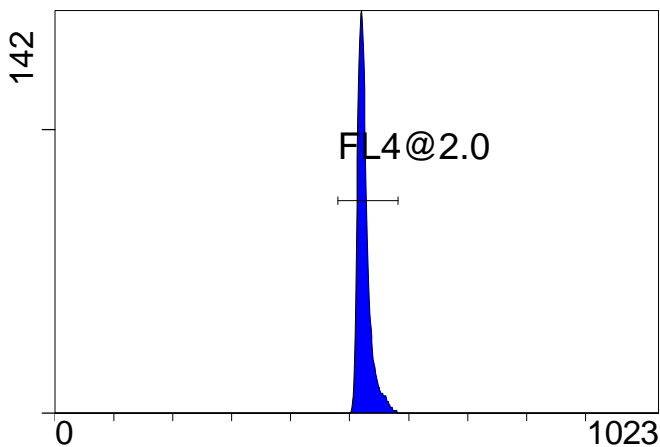
FL2 INT LIN

[FCblue@2.0] FL3 INT LIN



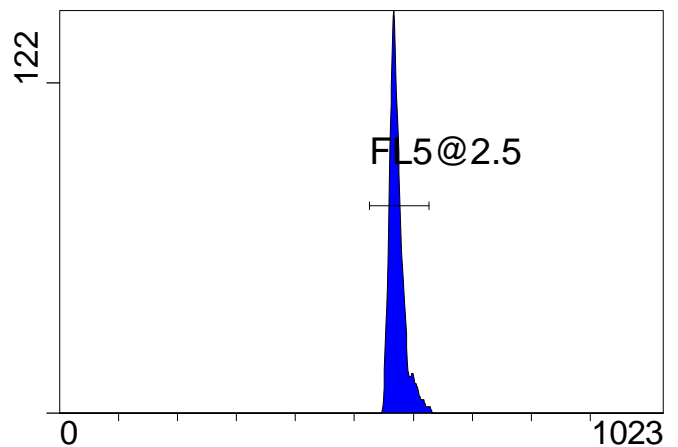
FL3 INT LIN

[FCblue@2.0] FL4 INT LIN



FL4 INT LIN

[FCblue@2.0] FL5 INT LIN



FL5 INT LIN

Institution: IRB

Protocol :Alignment Blue Red Violet_ALIGN.pro

Listmode Replay: New Protocol

Analysis Date: 15-Jul-2014, 08:58:33

Settings File: Alignment Blue Red Violet_ALIGN.pro, 07-Jul-2014, 09:29:53

Listmode File: Gallios FlowCheck 2014-07-15 049.LMD

Run Date: 15-Jul-14, 08:56:40

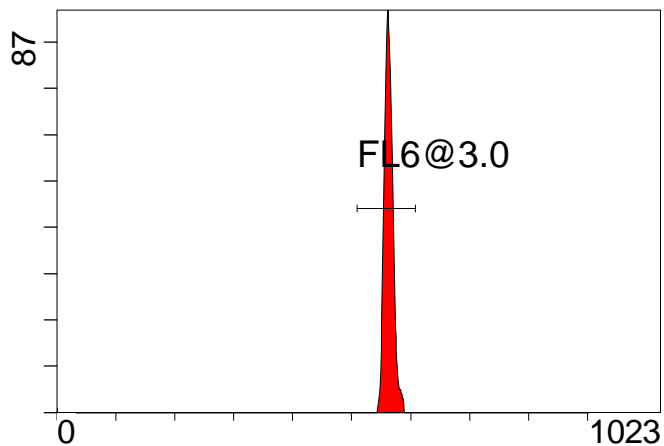
Sample ID: Gallios FlowCheck

User ID: duperray

Acquisition Time/Events: 28.5s / 6405 (PROTOCOL)

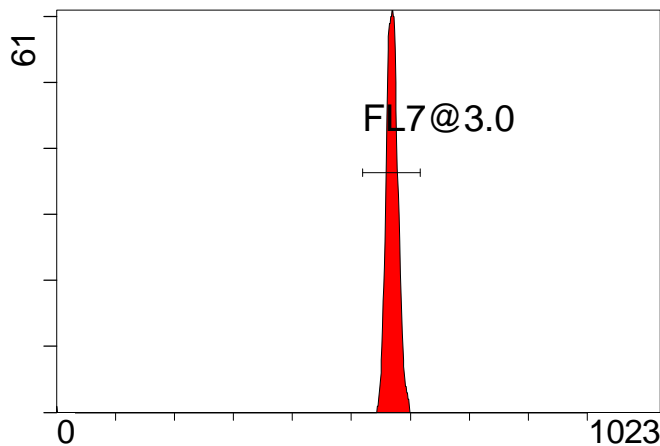
Instrument SN: AN11038 Software Version: Gallios 1.2

[FCred] FL6 INT LIN



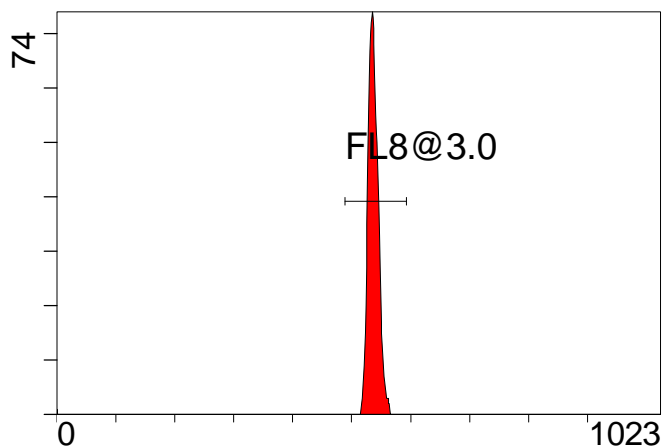
FL6 INT LIN

[FCred] FL7 INT LIN



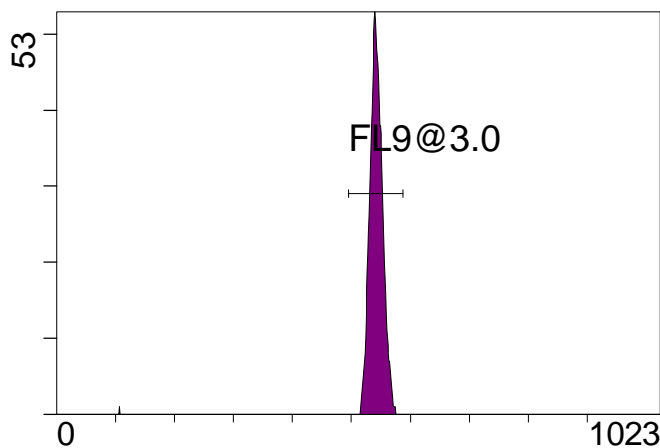
FL7 INT LIN

[FCred] FL8 INT LIN



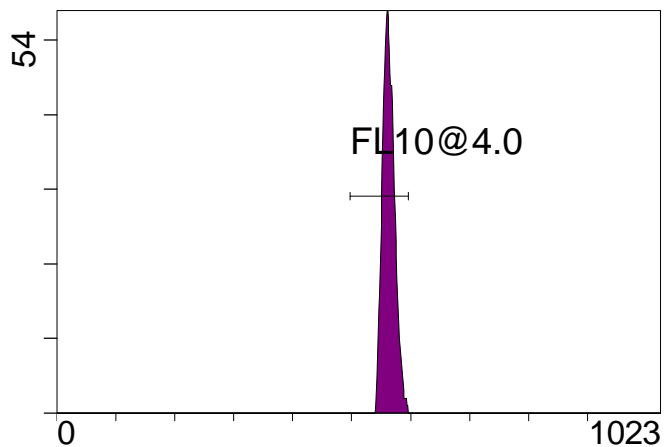
FL8 INT LIN

[FCviolet] FL9 INT LIN



FL9 INT LIN

[FCviolet] FL10 INT LIN



FL10 INT LIN

Statistical Analysis

PROGRAM INFORMATION

File:- Gallios FlowCheck 2014-07-15 049.LMD

Gate:- FCblue@2.0 [FCblue@2.0]

Compensation:-

Region	Number	X-Mean	X-HPCV
ALL	3000	574	1.36
ALL	3000	525	1.27
ALL	3000	529	1.07
ALL	3000	480	1.16
ALL	3000	484	1.00
FL1@2.0	2946	484	1.00
FL2@2.0	2976	480	1.16
FL3@2.0	2977	530	1.07
FL4@2.0	2973	525	1.27
FL5@2.5	2950	573	1.36

File:- Gallios FlowCheck 2014-07-15 049.LMD

Gate:- FCred [FCred]

Compensation:-

Region	Number	X-Mean	X-HPCV
ALL	1626	534	1.60
ALL	1626	566	1.49
ALL	1626	560	1.15
FL6@3.0	1609	563	1.15
FL7@3.0	1608	570	1.49
FL8@3.0	1609	537	1.60

File:- Gallios FlowCheck 2014-07-15 049.LMD

Gate:- FCviolet [FCviolet]

Compensation:-

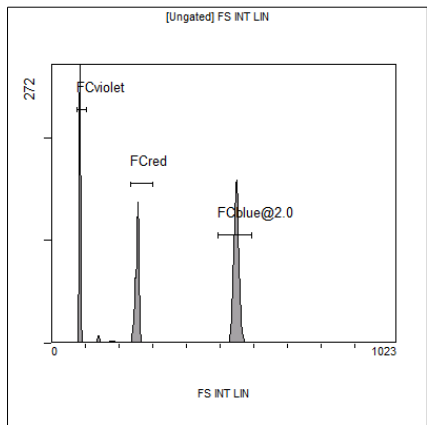
Region	Number	X-Mean	X-HPCV
ALL	1450	536	1.54
ALL	1450	561	1.50
FL10@4.0	1431	563	1.50
FL9@3.0	1427	543	1.54

File:- Gallios FlowCheck 2014-07-15 049.LMD

Gate:- Ungated

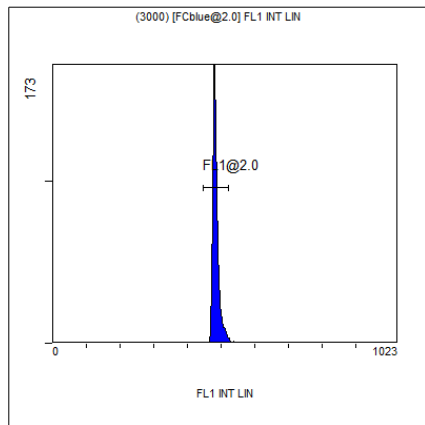
Compensation:-

Region	Number	X-Mean	X-HPCV
ALL	6405	354	1.43
FCblue@2.0	3000	548	1.19
FCred	1626	253	0.98
FCviolet	1450	83.4	1.43



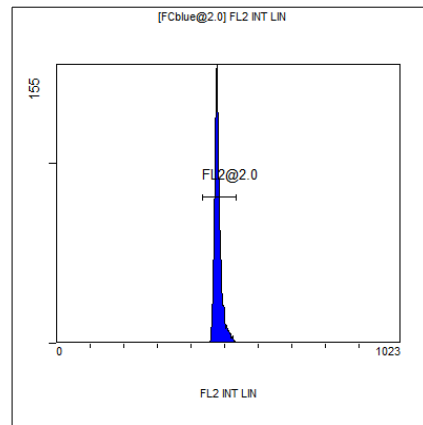
[Ungated] FS INT LIN

Region	Number	HP X-CV	X-Mean
ALL	6405	1.43	354
FCblue@2.0	3000	1.19	548
FCred	1626	0.98	253
FCviolet	1450	1.43	83.4



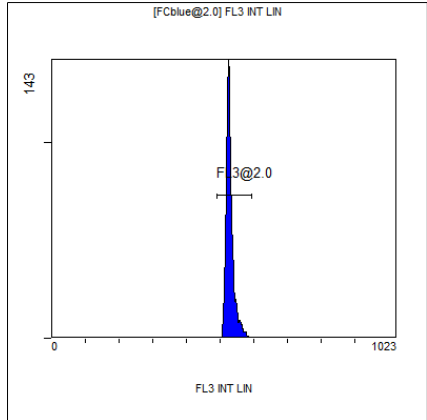
(3000) [FCblue@2.0] FL1 INT LIN

Region	Number	HP X-CV	X-Mean
ALL	3000	1.00	484
FL1@2.0	2946	1.00	484



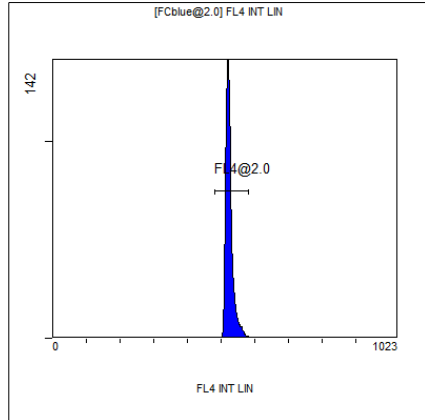
[FCblue@2.0] FL2 INT LIN

Region	Number	HP X-CV	X-Mean
ALL	3000	1.16	480
FL2@2.0	2976	1.16	480



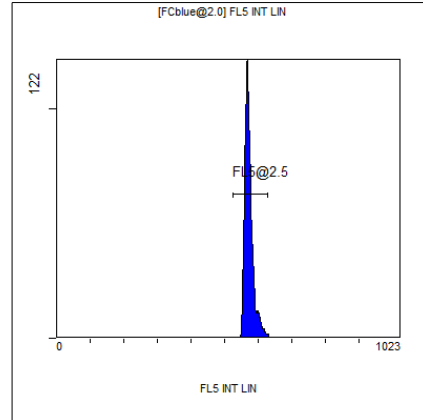
[FCblue@2.0] FL3 INT LIN

Region	Number	HP X-CV	X-Mean
ALL	3000	1.07	529
FL3@2.0	2977	1.07	530



[FCblue@2.0] FL4 INT LIN

Region	Number	HP X-CV	X-Mean
ALL	3000	1.27	525
FL4@2.0	2973	1.27	525



[FCblue@2.0] FL5 INT LIN

Region	Number	HP X-CV	X-Mean
ALL	3000	1.36	574
FL5@2.5	2950	1.36	573