

Institution: IRMB

Protocol :Alignment Blue Red Violet_ALIGN.pro

Listmode Replay: New Protocol

Analysis Date: 04-Aug-2014, 09:43:02

Settings File: Alignment Blue Red Violet_ALIGN.pro, 28-Jul-2014, 09:18:29

Listmode File: Gallios FlowCheck 2014-08-04 065.LMD

Run Date: 04-Aug-14, 09:41:13

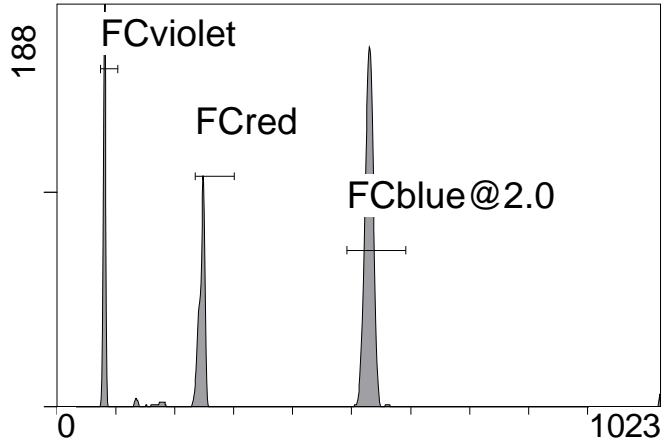
Sample ID: Gallios FlowCheck

User ID: Lopez

Acquisition Time/Events: 40.0s / 5438 (PROTOCOL)

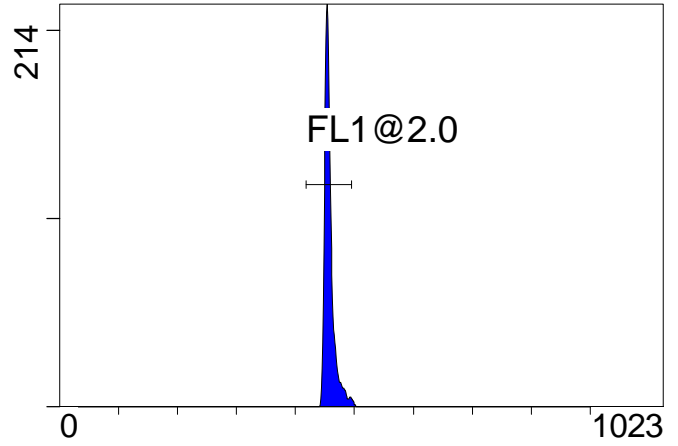
Instrument SN: AN11038 Software Version: Gallios 1.2

[Ungated] FS INT LIN



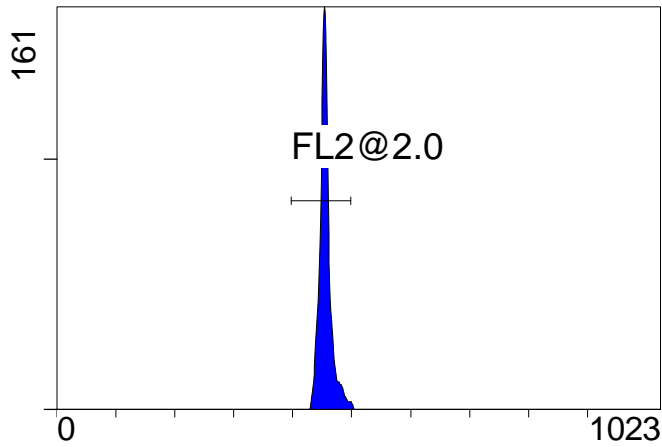
FS INT LIN

(3000) [FCblue@2.0] FL1 INT LIN



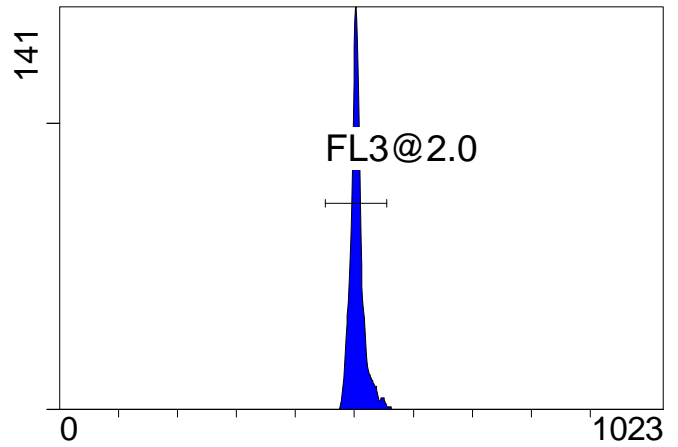
FL1 INT LIN

[FCblue@2.0] FL2 INT LIN



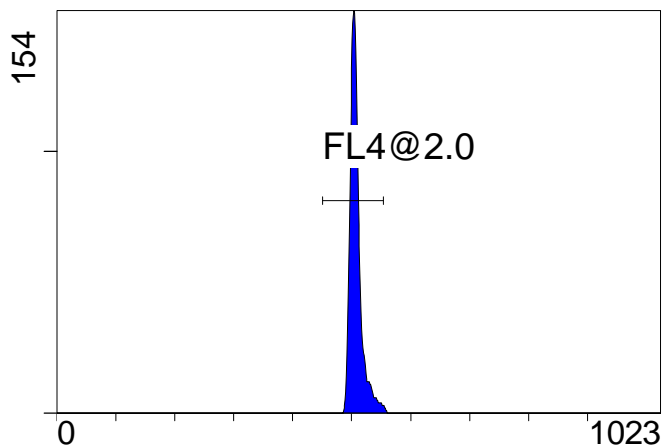
FL2 INT LIN

[FCblue@2.0] FL3 INT LIN



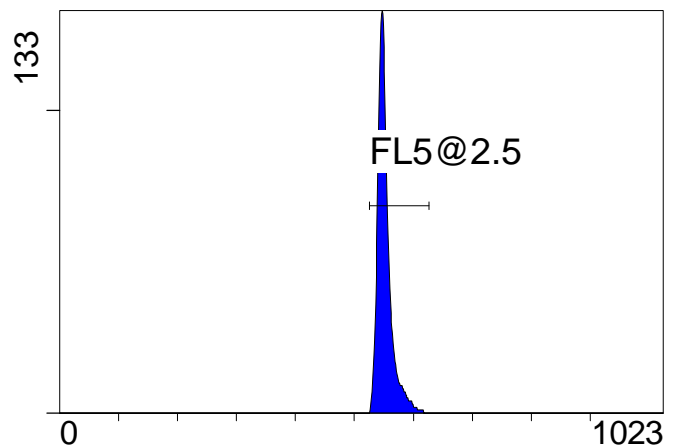
FL3 INT LIN

[FCblue@2.0] FL4 INT LIN



FL4 INT LIN

[FCblue@2.0] FL5 INT LIN



FL5 INT LIN

Institution: IRMB

Protocol :Alignment Blue Red Violet_ALIGN.pro

Listmode Replay: New Protocol

Analysis Date: 04-Aug-2014, 09:43:02

Settings File: Alignment Blue Red Violet_ALIGN.pro, 28-Jul-2014, 09:18:29

Listmode File: Gallios FlowCheck 2014-08-04 065.LMD

Run Date: 04-Aug-14, 09:41:13

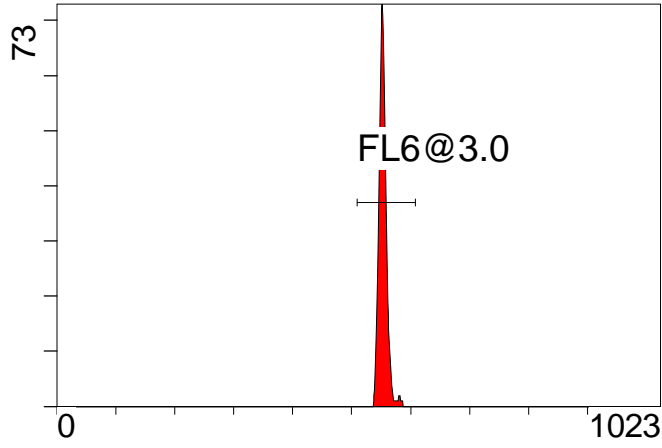
Sample ID: Gallios FlowCheck

User ID: Lopez

Acquisition Time/Events: 40.0s / 5438 (PROTOCOL)

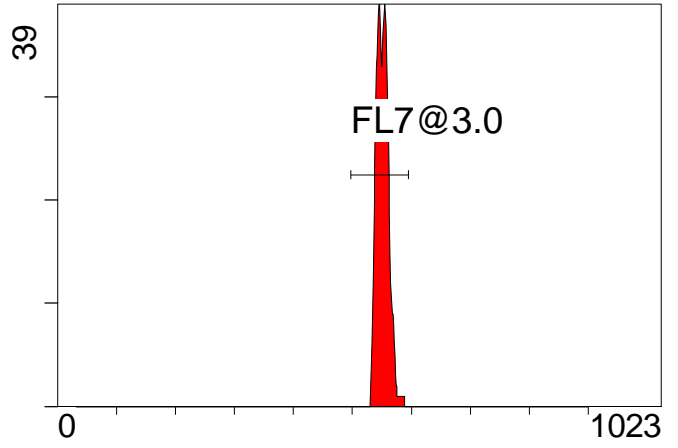
Instrument SN: AN11038 Software Version: Gallios 1.2

[FCred] FL6 INT LIN



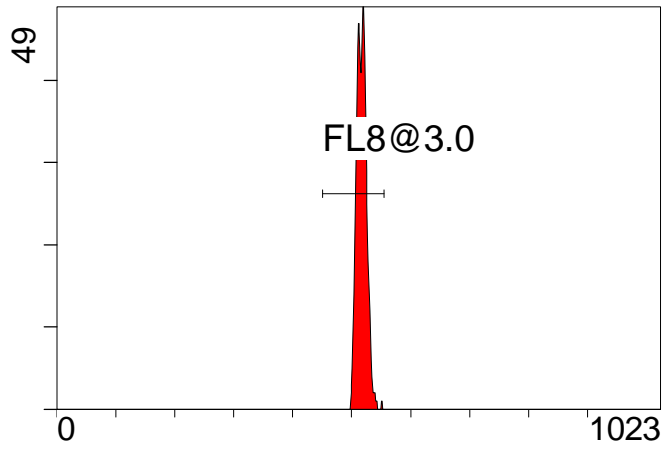
FL6 INT LIN

[FCred] FL7 INT LIN



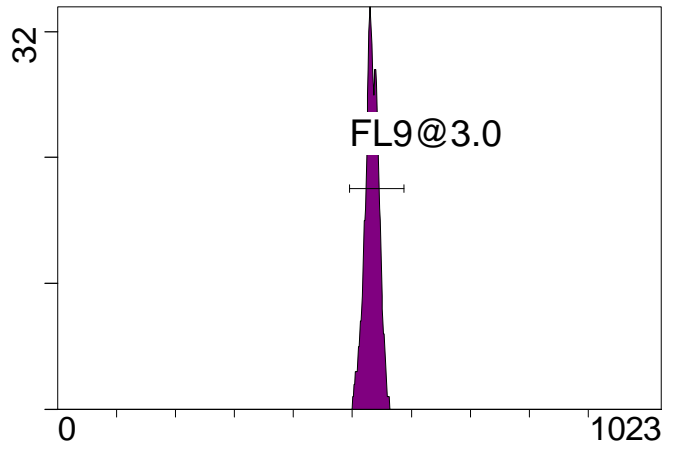
FL7 INT LIN

[FCred] FL8 INT LIN



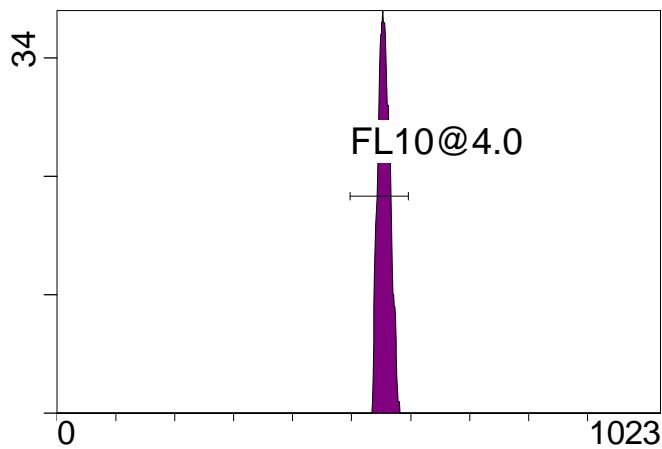
FL8 INT LIN

[FCviolet] FL9 INT LIN



FL9 INT LIN

[FCviolet] FL10 INT LIN



FL10 INT LIN

Statistical Analysis

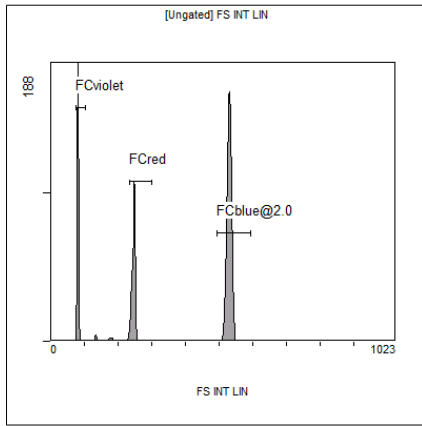
PROGRAM INFORMATION

File:- Gallios FlowCheck 2014-08-04 065.LMD				
Gate:- FCblue@2.0 [FCblue@2.0]				
Compensation:-				
Region	Number	X-Mean	X-HPCV	
ALL	3010	509	1.14	
ALL	3010	506	1.15	
ALL	3010	457	1.04	
ALL	3010	458	0.92	
ALL	3010	553	1.25	
FL1@2.0	2953	458	0.92	
FL2@2.0	2953	456	1.04	
FL3@2.0	2965	505	1.15	
FL4@2.0	2953	508	1.14	
FL5@2.5	2986	553	1.25	

File:- Gallios FlowCheck 2014-08-04 065.LMD				
Gate:- FCred [FCred]				
Compensation:-				
Region	Number	X-Mean	X-HPCV	
ALL	1144	516	1.64	
ALL	1144	550	1.58	
ALL	1144	551	0.98	
FL6@3.0	1134	554	0.98	
FL7@3.0	1126	552	1.58	
FL8@3.0	1130	518	1.64	

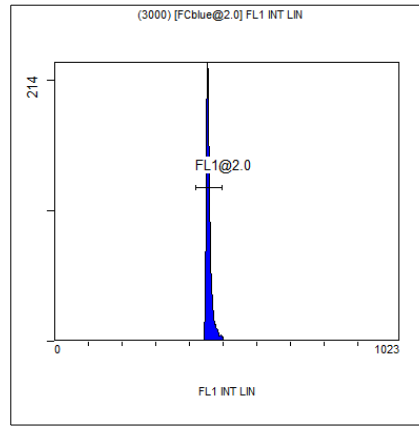
File:- Gallios FlowCheck 2014-08-04 065.LMD				
Gate:- FCviolet [FCviolet]				
Compensation:-				
Region	Number	X-Mean	X-HPCV	
ALL	968	530	1.68	
ALL	968	553	1.35	
FL10@4.0	964	556	1.35	
FL9@3.0	964	533	1.68	

File:- Gallios FlowCheck 2014-08-04 065.LMD				
Gate:- Ungated				
Compensation:-				
Region	Number	X-Mean	X-HPCV	
ALL	5438	379	1.54	
FCblue@2.0	3010	530	1.24	
FCred	1144	246	1.01	
FCviolet	968	80.6	1.54	



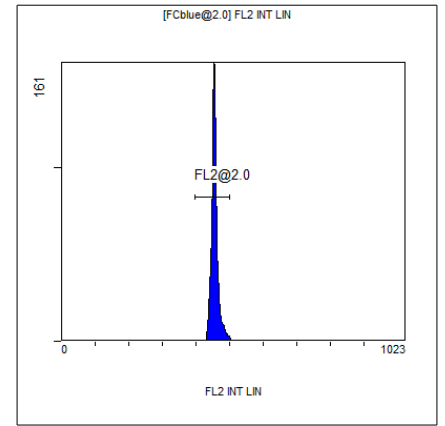
[Ungated] FS INT LIN

Region	Number	HP	X-CV	X-Mean
ALL	5438	1.54		379
FCblue@2.0	3010	1.24		530
FCred	1144	1.01		246
FCviolet	968	1.54		80.6



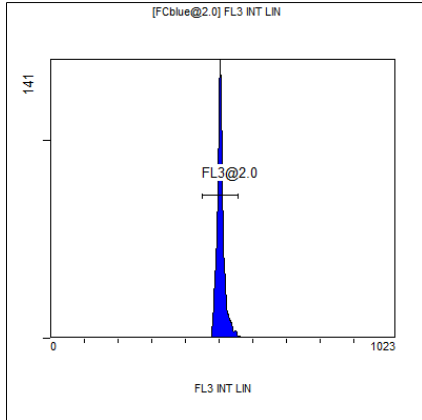
(3000) [FCblue@2.0] FL1 INT LIN

Region	Number	HP	X-CV	X-Mean
ALL	3010	0.92		458
FL1@2.0	2953	0.92		458



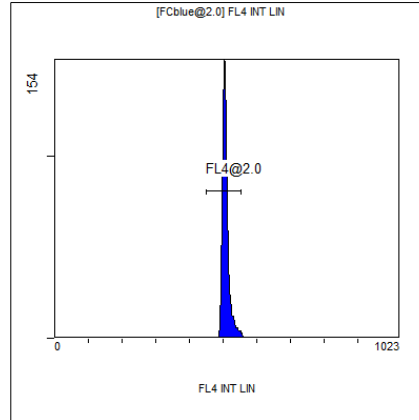
[FCblue@2.0] FL2 INT LIN

Region	Number	HP	X-CV	X-Mean
ALL	3010	1.04		457
FL2@2.0	2953	1.04		456



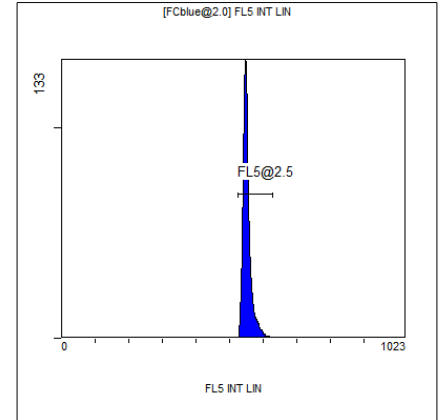
[FCblue@2.0] FL3 INT LIN

Region	Number	HP	X-CV	X-Mean
ALL	3010	1.15		506
FL3@2.0	2965	1.15		505



[FCblue@2.0] FL4 INT LIN

Region	Number	HP	X-CV	X-Mean
ALL	3010	1.14		509
FL4@2.0	2953	1.14		508



[FCblue@2.0] FL5 INT LIN

Region	Number	HP	X-CV	X-Mean
ALL	3010	1.25		553
FL5@2.5	2986	1.25		553