

Institution: IRB

Protocol :Alignment Blue Red Violet_ALIGN.pro

Listmode Replay: New Protocol

Analysis Date: 27-Oct-2014, 09:15:21

Settings File: Alignment Blue Red Violet_ALIGN.pro, 27-Oct-2014, 09:09:17

Listmode File: Gallios FlowCheck 2014-10-27 090.LMD

Run Date: 27-Oct-14, 09:09:52

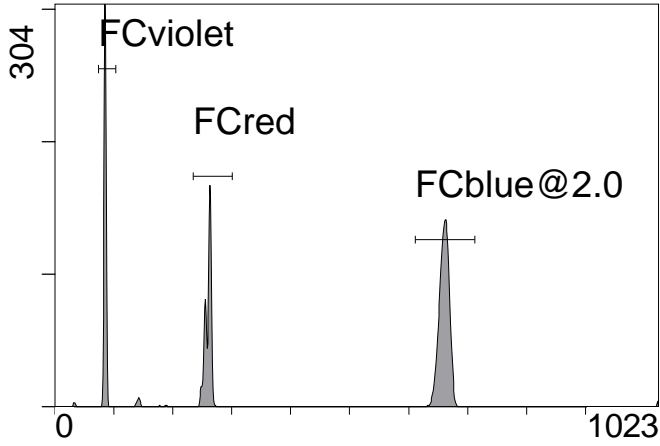
Sample ID: Gallios FlowCheck

User ID: duperray

Acquisition Time/Events: 50.7s / 6296 (PROTOCOL)

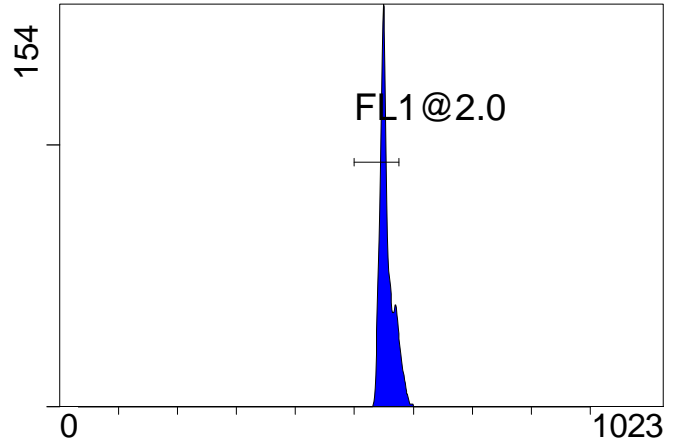
Instrument SN: AN11038 Software Version: Gallios 1.2

[Ungated] FS INT LIN



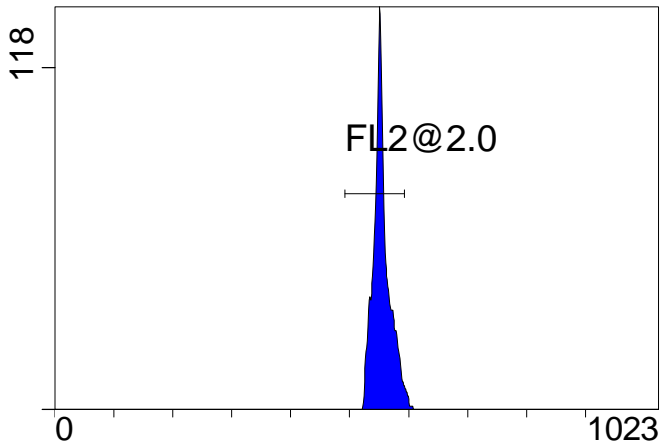
FS INT LIN

(3000) [FCblue@2.0] FL1 INT LIN



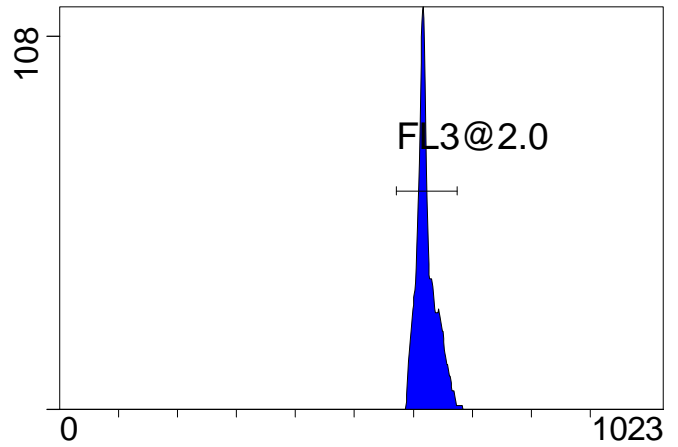
FL1 INT LIN

[FCblue@2.0] FL2 INT LIN



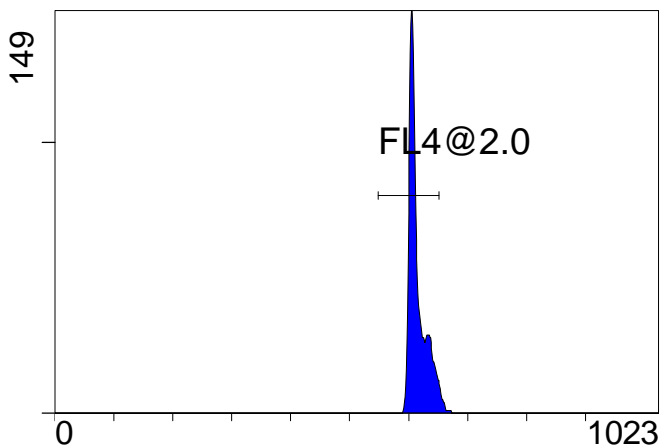
FL2 INT LIN

[FCblue@2.0] FL3 INT LIN



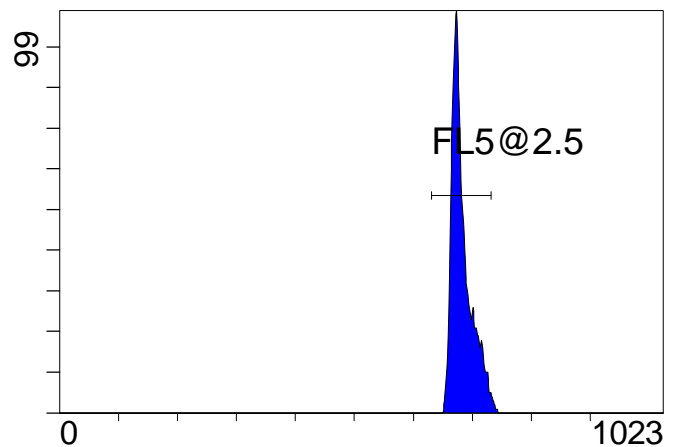
FL3 INT LIN

[FCblue@2.0] FL4 INT LIN



FL4 INT LIN

[FCblue@2.0] FL5 INT LIN



FL5 INT LIN

Institution: IRB

Protocol :Alignment Blue Red Violet_ALIGN.pro

Listmode Replay: New Protocol

Analysis Date: 27-Oct-2014, 09:15:21

Settings File: Alignment Blue Red Violet_ALIGN.pro, 27-Oct-2014, 09:09:17

Listmode File: Gallios FlowCheck 2014-10-27 090.LMD

Run Date: 27-Oct-14, 09:09:52

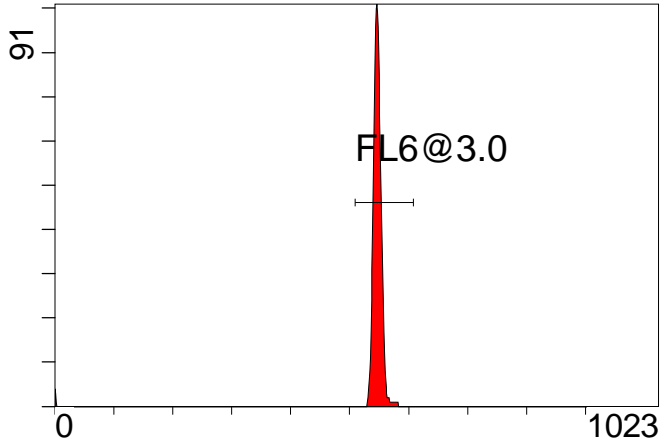
Sample ID: Gallios FlowCheck

User ID: duperray

Acquisition Time/Events: 50.7s / 6296 (PROTOCOL)

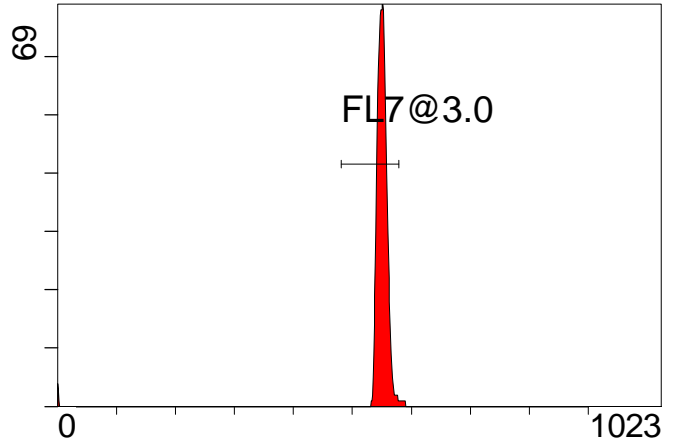
Instrument SN: AN11038 Software Version: Gallios 1.2

[FCred] FL6 INT LIN



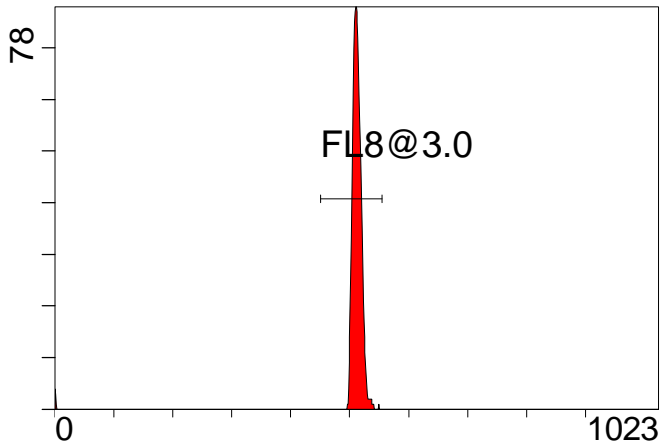
FL6 INT LIN

[FCred] FL7 INT LIN



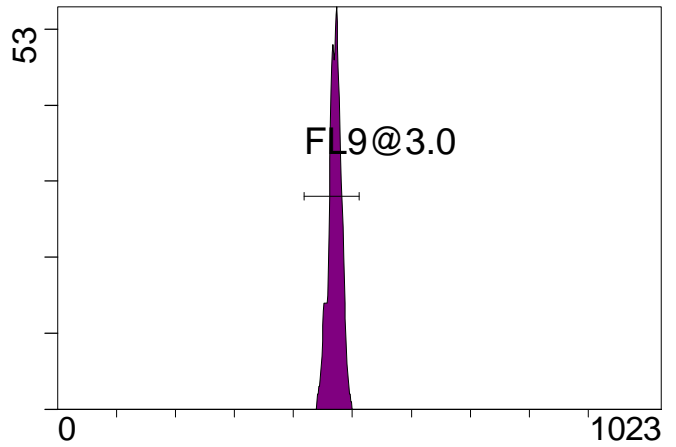
FL7 INT LIN

[FCred] FL8 INT LIN



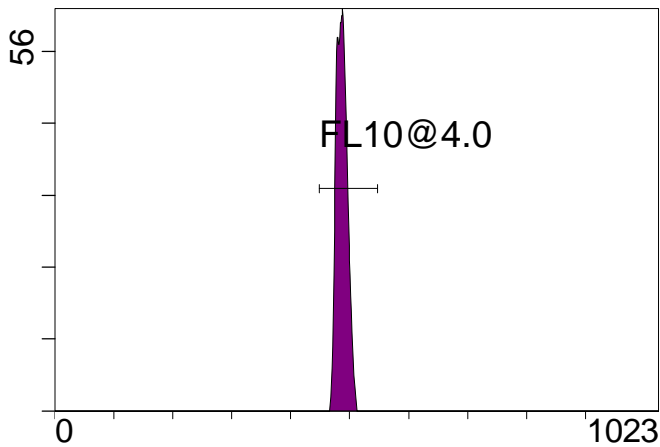
FL8 INT LIN

[FCviolet] FL9 INT LIN



FL9 INT LIN

[FCviolet] FL10 INT LIN



FL10 INT LIN

Statistical Analysis

PROGRAM INFORMATION

File:- Gallios FlowCheck 2014-10-27 090.LMD

Gate:- FCblue@2.0 [FCblue@2.0]

Compensation:-

Region	Number	X-Mean	X-HPCV
ALL	3000	683	1.12
ALL	3000	616	0.72
ALL	3000	623	0.88
ALL	3000	555	0.90
ALL	3000	555	0.80
FL1@2.0	2752	553	0.80
FL2@2.0	2933	554	0.90
FL3@2.0	2974	622	0.88
FL4@2.0	2886	614	0.72
FL5@2.5	2941	683	1.12

File:- Gallios FlowCheck 2014-10-27 090.LMD

Gate:- FCred [FCred]

Compensation:-

Region	Number	X-Mean	X-HPCV
ALL	1519	543	1.26
ALL	1519	505	1.30
ALL	1519	540	0.93
FL6@3.0	1486	548	0.93
FL7@3.0	1466	550	1.26
FL8@3.0	1491	513	1.30

File:- Gallios FlowCheck 2014-10-27 090.LMD

Gate:- FCviolet [FCviolet]

Compensation:-

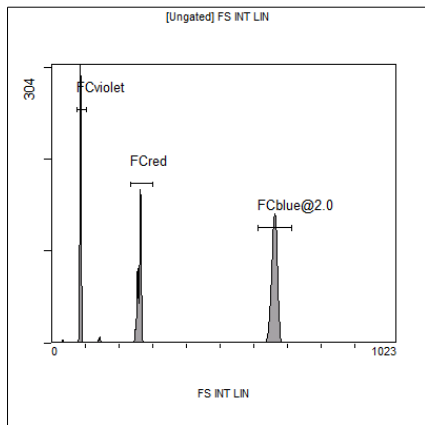
Region	Number	X-Mean	X-HPCV
ALL	1427	485	1.77
ALL	1427	468	1.62
FL10@4.0	1417	487	1.77
FL9@3.0	1418	470	1.62

File:- Gallios FlowCheck 2014-10-27 090.LMD

Gate:- Ungated

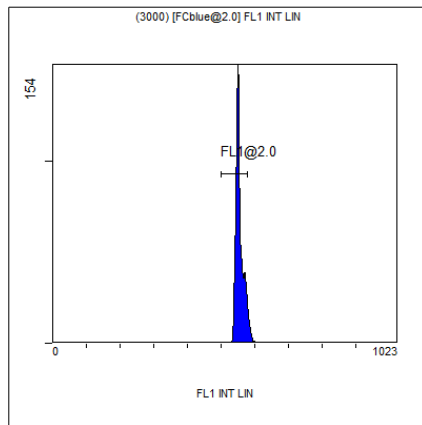
Compensation:-

Region	Number	X-Mean	X-HPCV
ALL	6296	414	1.07
FCblue@2.0	3000	660	1.16
FCred	1519	260	0.52
FCviolet	1427	85.2	1.07



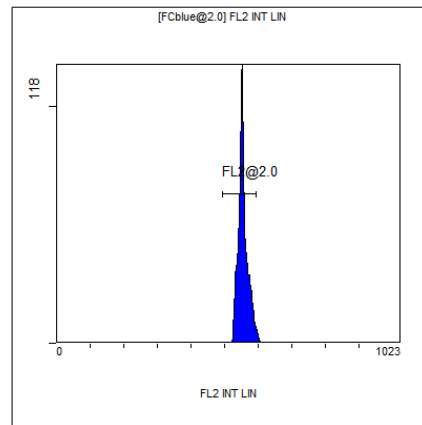
[Ungated] FS INT LIN

Region	Number	HP	X-CV	X-Mean
ALL	6296	1.07		414
FCblue@2.0	3000	1.16		660
FCred	1519	0.52		260
FCviolet	1427	1.07		85.2



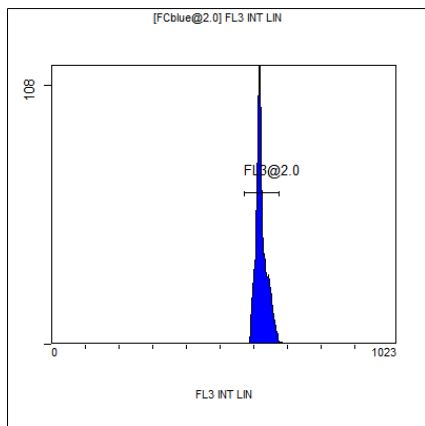
(3000) [FCblue@2.0] FL1 INT LIN

Region	Number	HP	X-CV	X-Mean
ALL	3000	0.80		555
FL1@2.0	2752	0.80		553



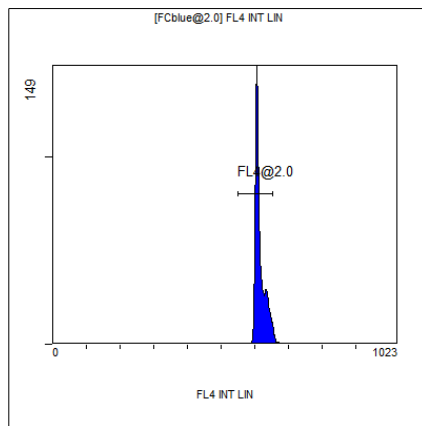
[FCblue@2.0] FL2 INT LIN

Region	Number	HP	X-CV	X-Mean
ALL	3000	0.90		555
FL2@2.0	2933	0.90		554



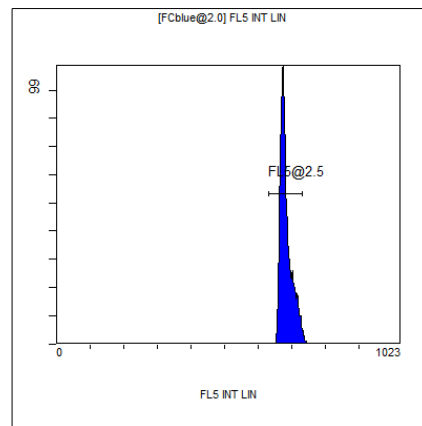
[FCblue@2.0] FL3 INT LIN

Region	Number	HP	X-CV	X-Mean
ALL	3000	0.88		623
FL3@2.0	2974	0.88		622



[FCblue@2.0] FL4 INT LIN

Region	Number	HP	X-CV	X-Mean
ALL	3000	0.72		616
FL4@2.0	2886	0.72		614



[FCblue@2.0] FL5 INT LIN

Region	Number	HP	X-CV	X-Mean
ALL	3000	1.12		683
FL5@2.5	2941	1.12		683