

Institution: IRB

Protocol :Alignment Blue Red Violet_ALIGN.pro

Listmode Replay: New Protocol

Analysis Date: 12-Nov-2014, 09:51:08

Settings File: Alignment Blue Red Violet_ALIGN.pro, 12-Nov-2014, 09:47:55

Listmode File: Gallios FlowCheck 2014-11-12 092.LMD

Run Date: 12-Nov-14, 09:49:05

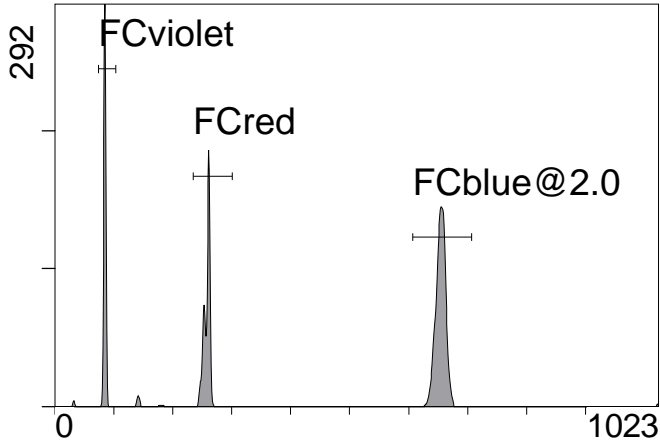
Sample ID: Gallios FlowCheck

User ID: duperray

Acquisition Time/Events: 28.5s / 6401 (PROTOCOL)

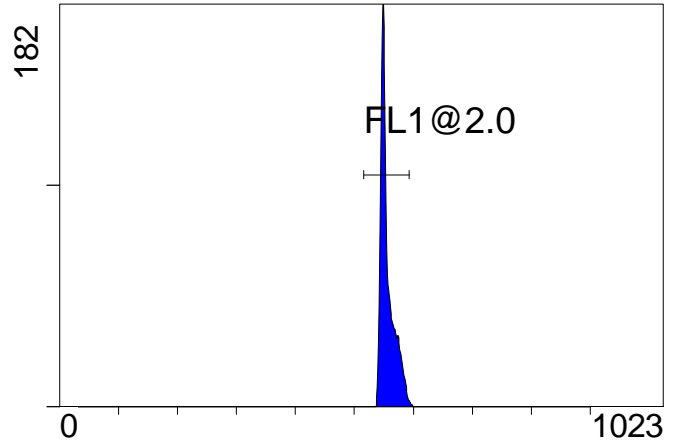
Instrument SN: AN11038 Software Version: Gallios 1.2

[Ungated] FS INT LIN



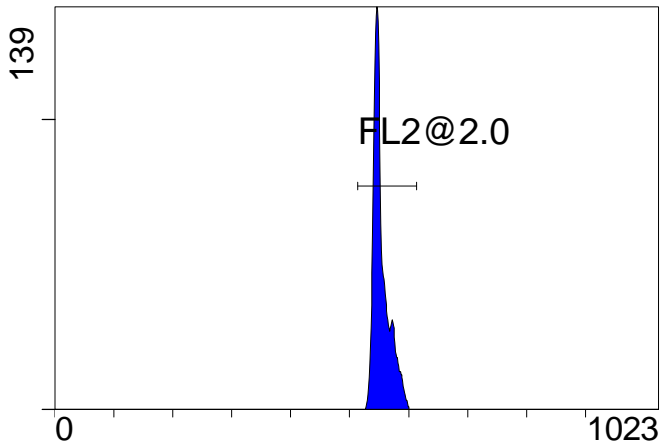
FS INT LIN

(3000) [FCblue@2.0] FL1 INT LIN



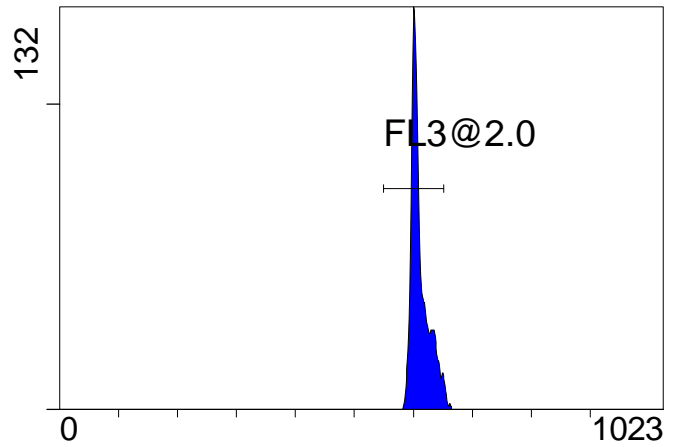
FL1 INT LIN

[FCblue@2.0] FL2 INT LIN



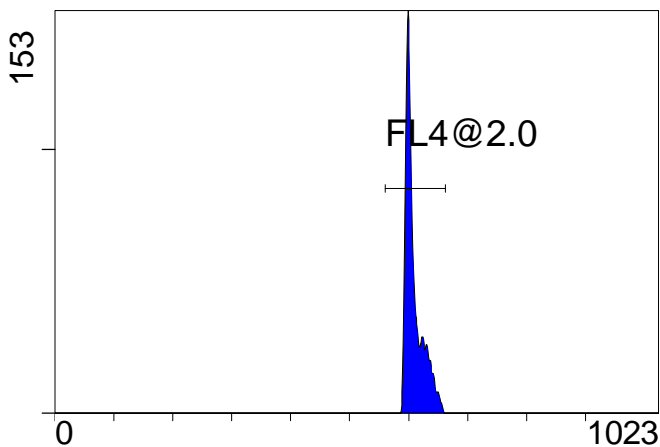
FL2 INT LIN

[FCblue@2.0] FL3 INT LIN



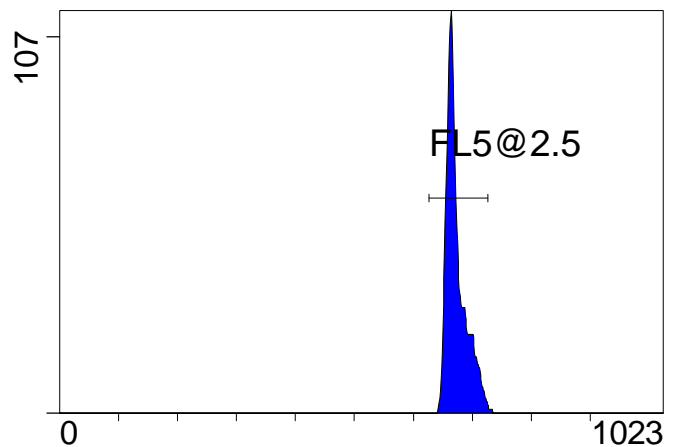
FL3 INT LIN

[FCblue@2.0] FL4 INT LIN



FL4 INT LIN

[FCblue@2.0] FL5 INT LIN



FL5 INT LIN

Institution: IRB

Protocol :Alignment Blue Red Violet_ALIGN.pro

Listmode Replay: New Protocol

Analysis Date: 12-Nov-2014, 09:51:08

Settings File: Alignment Blue Red Violet_ALIGN.pro, 12-Nov-2014, 09:47:55

Listmode File: Gallios FlowCheck 2014-11-12 092.LMD

Run Date: 12-Nov-14, 09:49:05

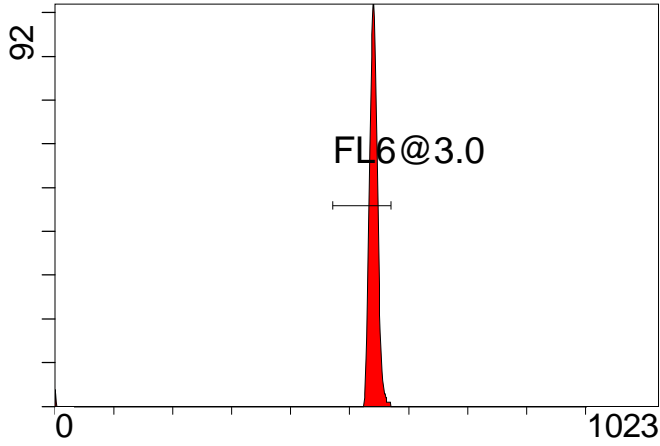
Sample ID: Gallios FlowCheck

User ID: duperray

Acquisition Time/Events: 28.5s / 6401 (PROTOCOL)

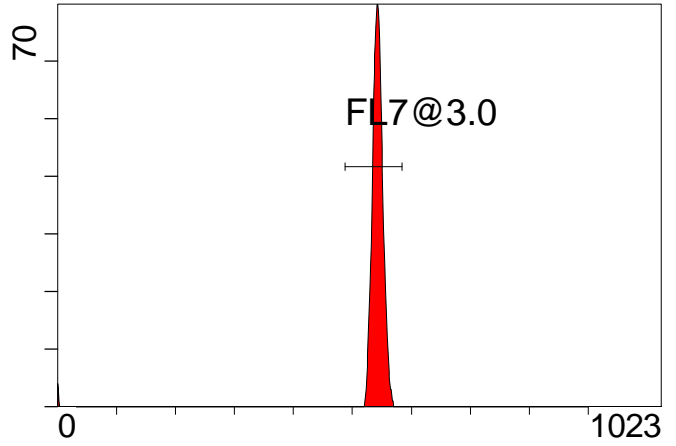
Instrument SN: AN11038 Software Version: Gallios 1.2

[FCred] FL6 INT LIN



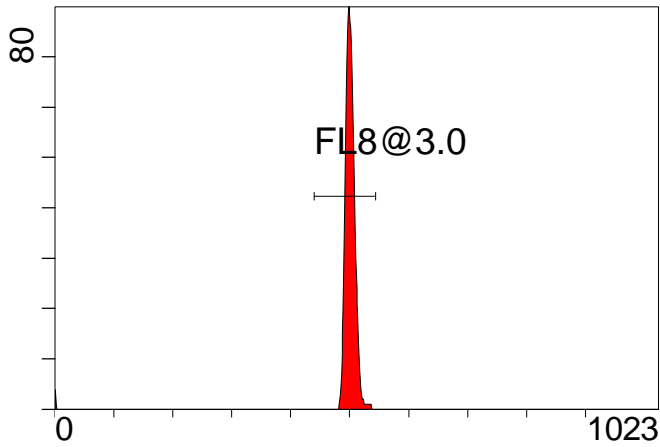
FL6 INT LIN

[FCred] FL7 INT LIN



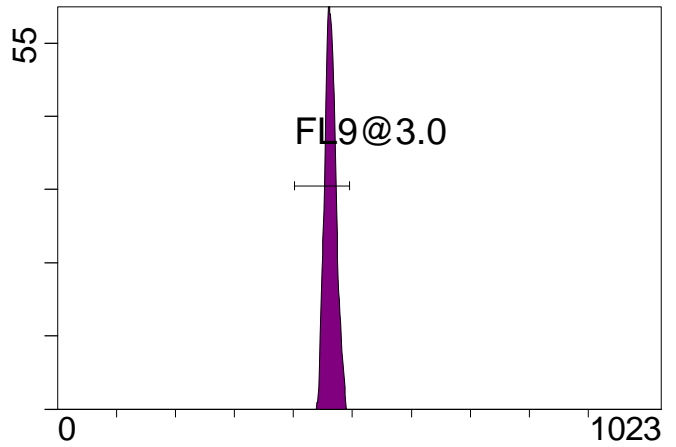
FL7 INT LIN

[FCred] FL8 INT LIN



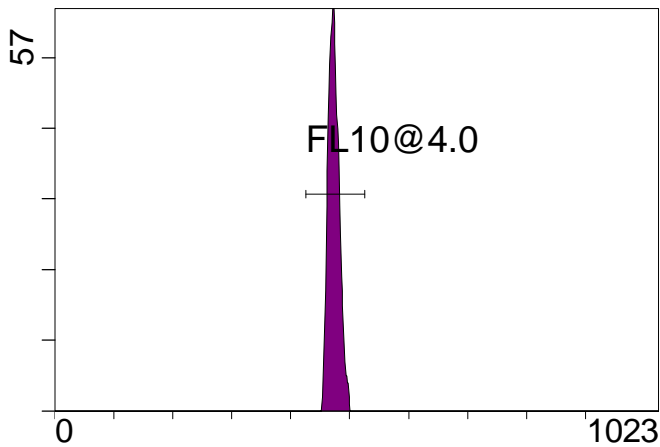
FL8 INT LIN

[FCviolet] FL9 INT LIN



FL9 INT LIN

[FCviolet] FL10 INT LIN



FL10 INT LIN

Statistical Analysis

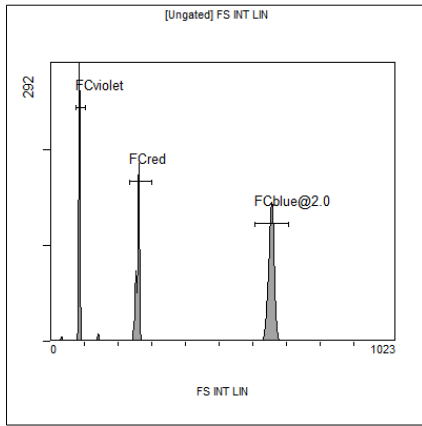
PROGRAM INFORMATION

File:- Gallios FlowCheck 2014-11-12 092.LMD				
Gate:- FCblue@2.0 [FCblue@2.0]				
Compensation:-				
Region	Number	X-Mean	X-HPCV	
ALL	3009	674	0.99	
ALL	3009	610	0.78	
ALL	3009	612	0.89	
ALL	3009	554	0.92	
ALL	3009	556	0.72	
FL1@2.0	2977	556	0.72	
FL2@2.0	3005	555	0.92	
FL3@2.0	2922	611	0.89	
FL4@2.0	2987	610	0.78	
FL5@2.5	2971	673	0.99	

File:- Gallios FlowCheck 2014-11-12 092.LMD				
Gate:- FCred [FCred]				
Compensation:-				
Region	Number	X-Mean	X-HPCV	
ALL	1616	495	1.33	
ALL	1616	536	1.40	
ALL	1616	534	1.19	
FL6@3.0	1573	541	1.19	
FL7@3.0	1582	543	1.40	
FL8@3.0	1587	501	1.33	

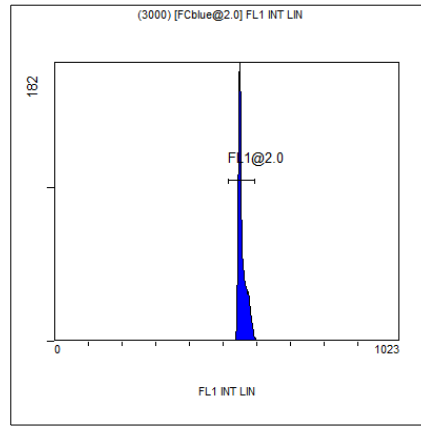
File:- Gallios FlowCheck 2014-11-12 092.LMD				
Gate:- FCviolet [FCviolet]				
Compensation:-				
Region	Number	X-Mean	X-HPCV	
ALL	1396	473	1.87	
ALL	1396	462	1.72	
FL10@4.0	1390	474	1.87	
FL9@3.0	1387	463	1.72	

File:- Gallios FlowCheck 2014-11-12 092.LMD				
Gate:- Ungated				
Compensation:-				
Region	Number	X-Mean	X-HPCV	
ALL	6401	410	0.95	
FCblue@2.0	3009	654	0.98	
FCred	1616	258	0.45	
FCviolet	1396	84.7	0.95	



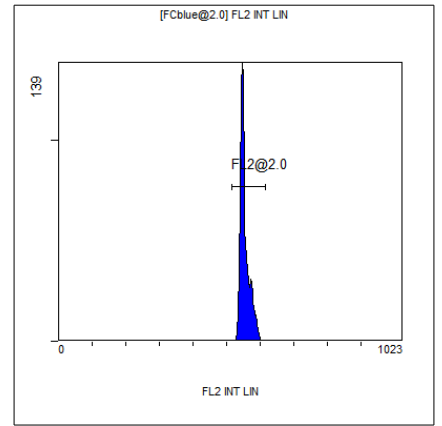
[Ungated] FS INT LIN

Region	Number	HP X-CV	X-Mean
ALL	6401	0.95	410
FCblue@2.0	3009	0.98	654
FCred	1616	0.45	258
FCviolet	1396	0.95	84.7



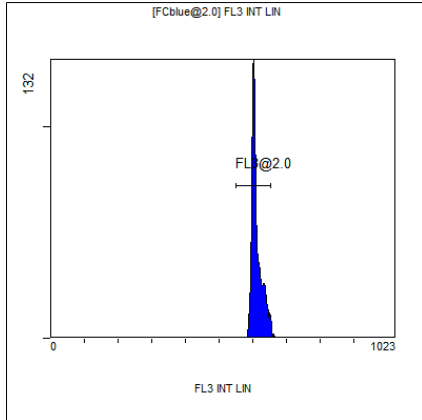
(3000) [FCblue@2.0] FL1 INT LIN

Region	Number	HP X-CV	X-Mean
ALL	3009	0.72	556
FL1@2.0	2977	0.72	556



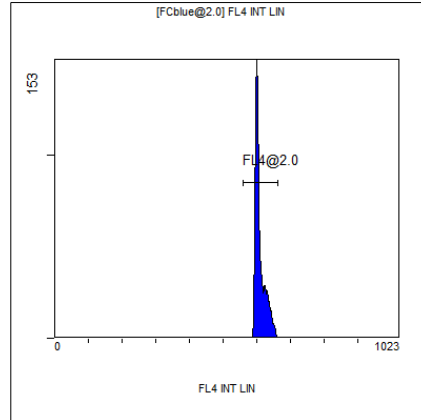
[FCblue@2.0] FL2 INT LIN

Region	Number	HP X-CV	X-Mean
ALL	3009	0.92	554
FL2@2.0	3005	0.92	555



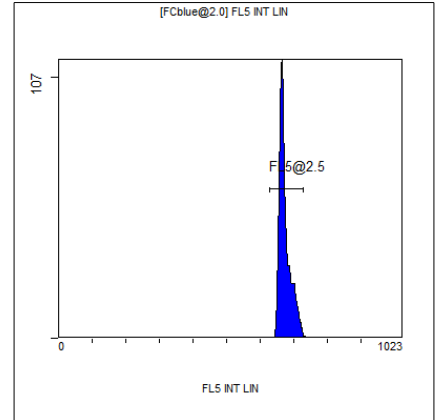
[FCblue@2.0] FL3 INT LIN

Region	Number	HP X-CV	X-Mean
ALL	3009	0.89	612
FL3@2.0	2922	0.89	611



[FCblue@2.0] FL4 INT LIN

Region	Number	HP X-CV	X-Mean
ALL	3009	0.78	610
FL4@2.0	2987	0.78	610



[FCblue@2.0] FL5 INT LIN

Region	Number	HP X-CV	X-Mean
ALL	3009	0.99	674
FL5@2.5	2971	0.99	673