

Institution: IRB

Protocol :Alignment Blue Red Violet_ALIGN.pro

Listmode Replay: New Protocol

Analysis Date: 19-Nov-2014, 09:42:37

Settings File: Alignment Blue Red Violet_ALIGN.pro, 19-Nov-2014, 09:40:51

Listmode File: Gallios Flow Check 2014-11-19 096.LMD

Run Date: 19-Nov-14, 09:40:58

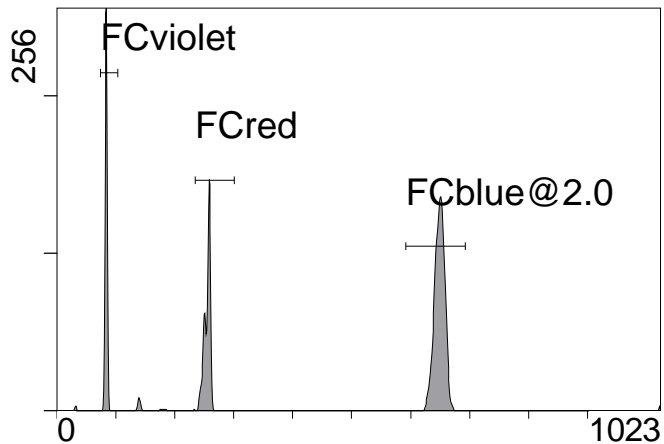
Sample ID: Gallios Flow Check

User ID: duperray

Acquisition Time/Events: 34.5s / 6001 (PROTOCOL)

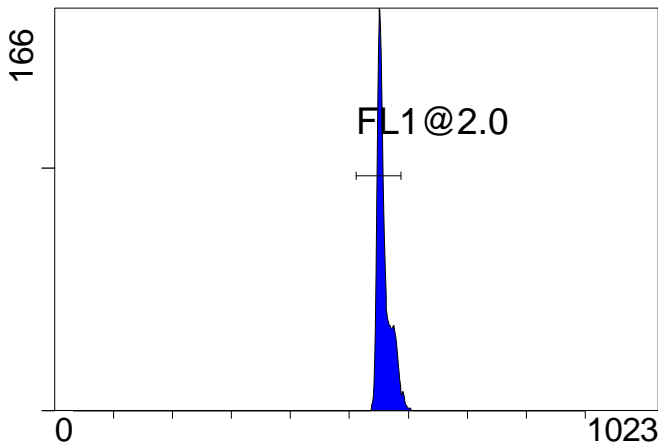
Instrument SN: AN11038 Software Version: Gallios 1.2

[Ungated] FS INT LIN



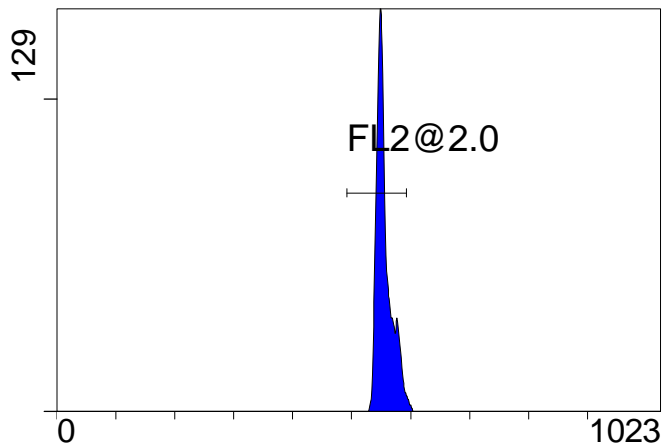
FS INT LIN

(3000) [FCblue@2.0] FL1 INT LIN



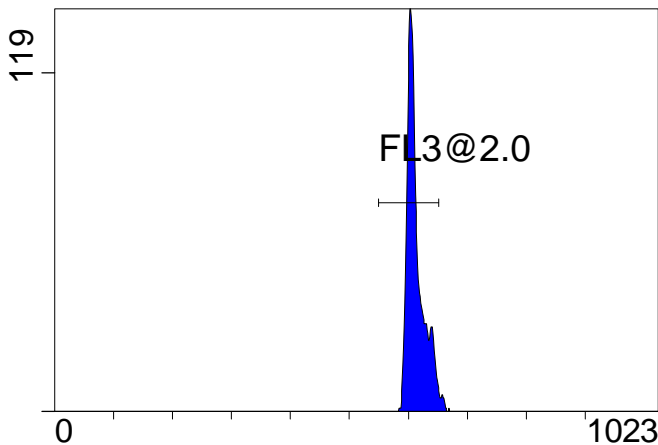
FL1 INT LIN

[FCblue@2.0] FL2 INT LIN



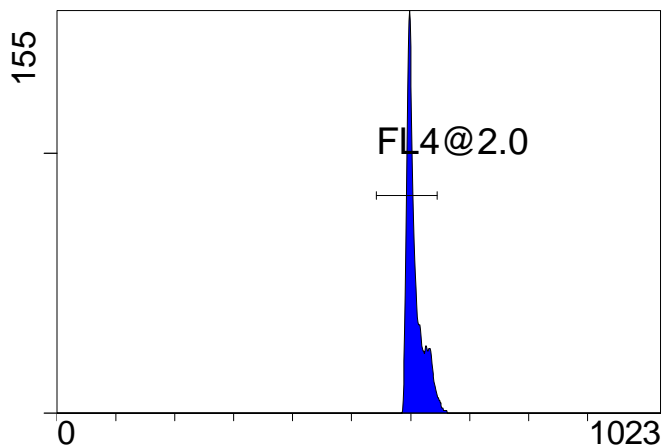
FL2 INT LIN

[FCblue@2.0] FL3 INT LIN



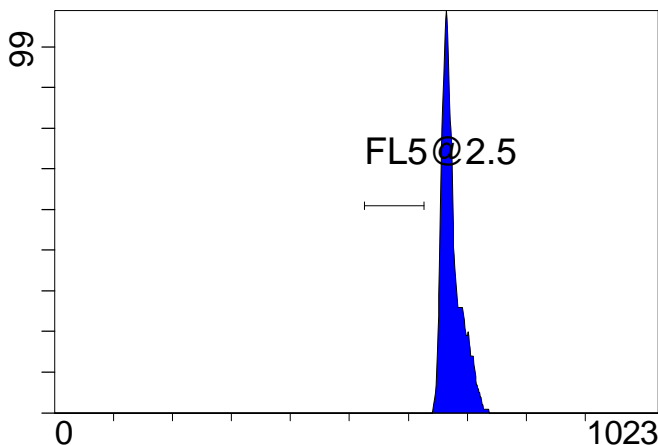
FL3 INT LIN

[FCblue@2.0] FL4 INT LIN



FL4 INT LIN

[FCblue@2.0] FL5 INT LIN



FL5 INT LIN

Institution: IRB

Protocol :Alignment Blue Red Violet_ALIGN.pro

Listmode Replay: New Protocol

Analysis Date: 19-Nov-2014, 09:42:37

Settings File: Alignment Blue Red Violet_ALIGN.pro, 19-Nov-2014, 09:40:51

Listmode File: Gallios Flow Check 2014-11-19 096.LMD

Run Date: 19-Nov-14, 09:40:58

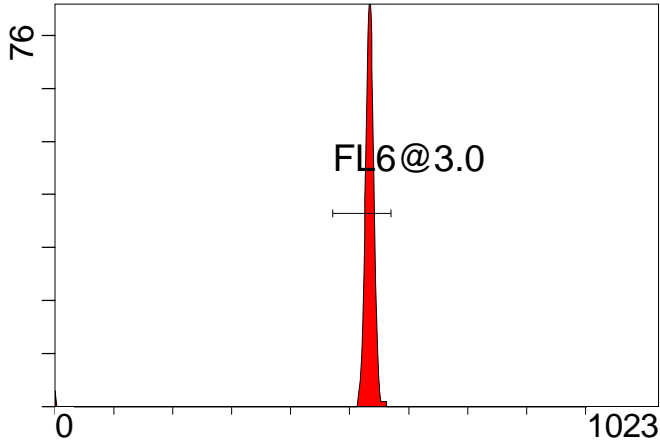
Sample ID: Gallios Flow Check

User ID: duperray

Acquisition Time/Events: 34.5s / 6001 (PROTOCOL)

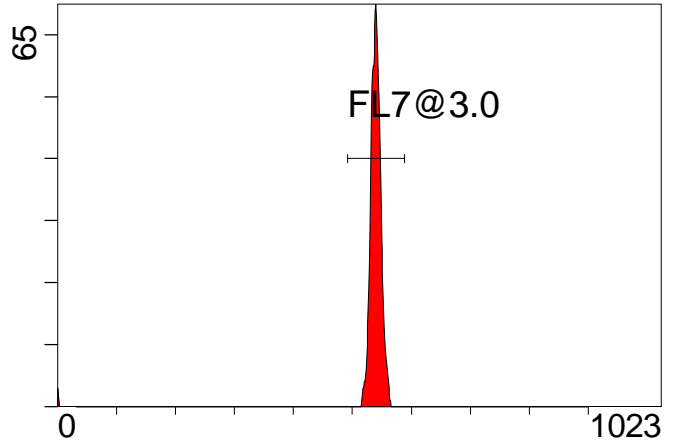
Instrument SN: AN11038 Software Version: Gallios 1.2

[FCred] FL6 INT LIN



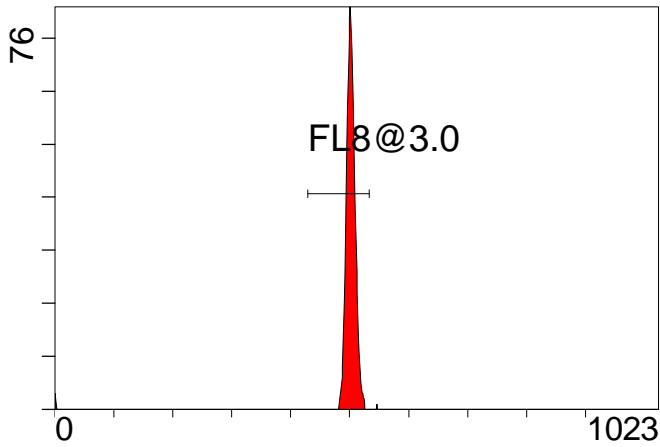
FL6 INT LIN

[FCred] FL7 INT LIN



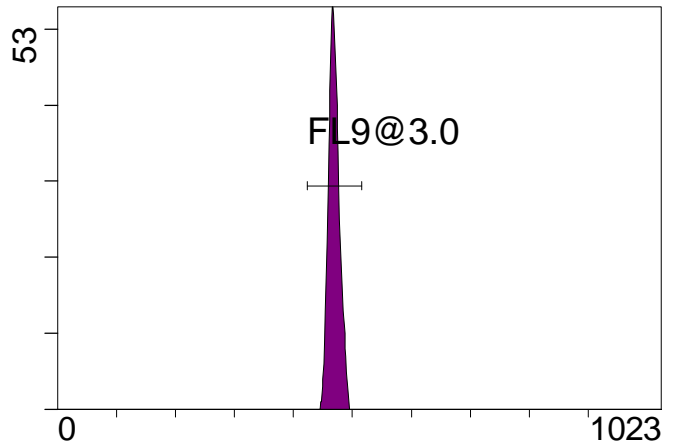
FL7 INT LIN

[FCred] FL8 INT LIN



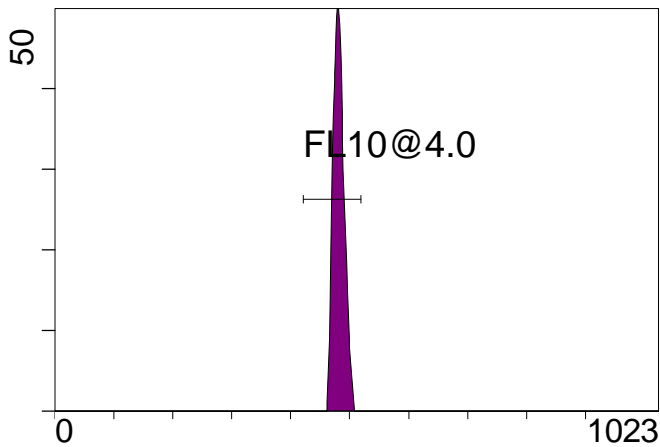
FL8 INT LIN

[FCviolet] FL9 INT LIN



FL9 INT LIN

[FCviolet] FL10 INT LIN



FL10 INT LIN

Statistical Analysis

PROGRAM INFORMATION

File:- Gallios Flow Check 2014-11-19 096.LMD

Gate:- FCblue@2.0 [FCblue@2.0]

Compensation:-

Region	Number	X-Mean	X-HPCV
ALL	3002	608	0.80
ALL	3002	614	1.09
ALL	3002	556	1.08
ALL	3002	559	0.82
ALL	3002	675	1.31
FL1@2.0	2911	558	0.82
FL2@2.0	2945	555	1.08
FL3@2.0	2921	613	1.09
FL4@2.0	2921	607	0.80
FL5@2.5	1	621	0.14

File:- Gallios Flow Check 2014-11-19 096.LMD

Gate:- FCred [FCred]

Compensation:-

Region	Number	X-Mean	X-HPCV
ALL	1424	534	1.29
ALL	1424	497	1.13
ALL	1424	529	1.24
FL6@3.0	1393	534	1.24
FL7@3.0	1402	540	1.29
FL8@3.0	1387	502	1.13

File:- Gallios Flow Check 2014-11-19 096.LMD

Gate:- FCviolet [FCviolet]

Compensation:-

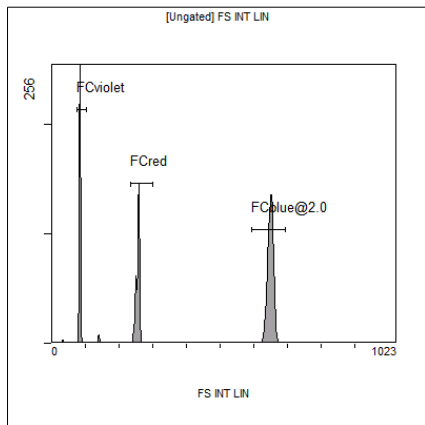
Region	Number	X-Mean	X-HPCV
ALL	1244	466	1.67
ALL	1244	479	1.64
FL10@4.0	1233	482	1.64
FL9@3.0	1235	469	1.67

File:- Gallios Flow Check 2014-11-19 096.LMD

Gate:- Ungated

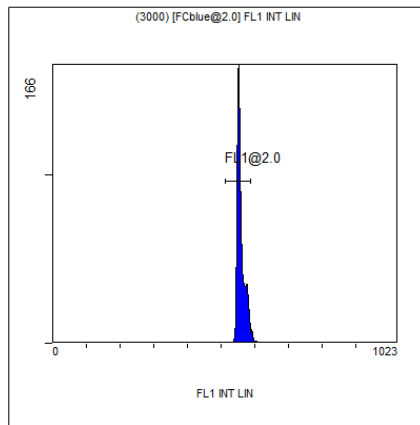
Compensation:-

Region	Number	X-Mean	X-HPCV
ALL	6001	420	1.09
FCblue@2.0	3002	649	1.18
FCred	1424	255	0.71
FCviolet	1244	83.5	1.09



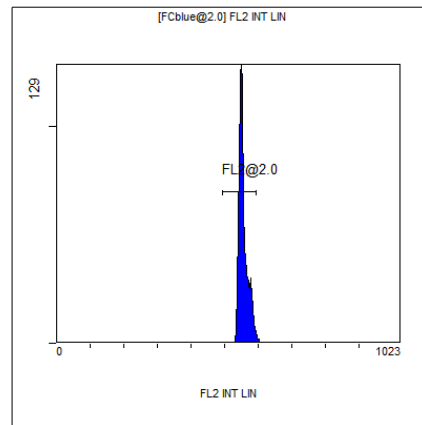
[Ungated] FS INT LIN

Region	Number	HP	X-CV	X-Mean
ALL	6001	1.09		420
FCblue@2.0	3002	1.18		649
FCred	1424	0.71		255
FCviolet	1244	1.09		83.5



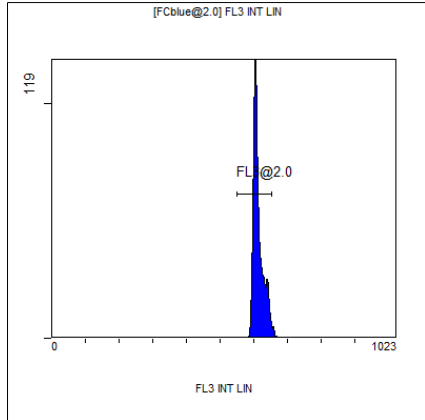
(3000) [FCblue@2.0] FL1 INT LIN

Region	Number	HP	X-CV	X-Mean
ALL	3002	0.82		559
FL1@2.0	2911	0.82		558



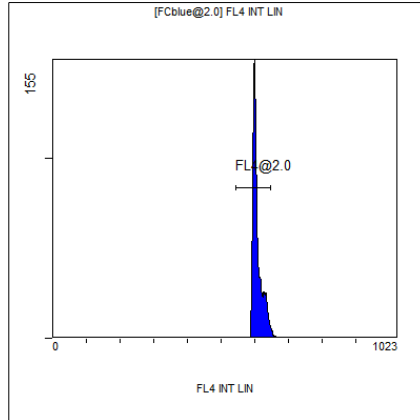
[FCblue@2.0] FL2 INT LIN

Region	Number	HP	X-CV	X-Mean
ALL	3002	1.08		556
FL2@2.0	2945	1.08		555



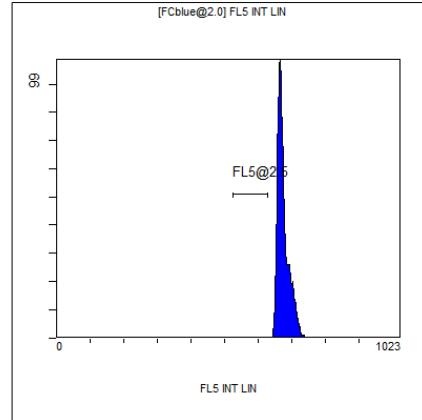
[FCblue@2.0] FL3 INT LIN

Region	Number	HP	X-CV	X-Mean
ALL	3002	1.09		614
FL3@2.0	2921	1.09		613



[FCblue@2.0] FL4 INT LIN

Region	Number	HP	X-CV	X-Mean
ALL	3002	0.80		608
FL4@2.0	2921	0.80		607



[FCblue@2.0] FL5 INT LIN

Region	Number	HP	X-CV	X-Mean
ALL	3002	1.31		675
FL5@2.5	1	0.14		621