

Institution: IRB

Protocol :Alignment Blue Red Violet_ALIGN.pro

Listmode Replay: Runtime Protocol

Analysis Date: 19-Jan-2015, 09:08:27

Settings File: Alignment Blue Red Violet_ALIGN.pro, 05-Jan-2015, 10:07:26

Listmode File: Gallios FlowCheck 2015-01-19 111.LMD

Run Date: 19-Jan-15, 09:06:05

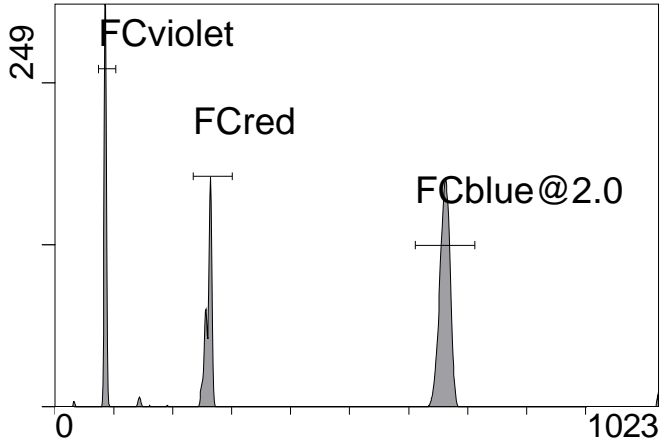
Sample ID: Gallios FlowCheck

User ID: duperray

Acquisition Time/Events: 47.0s / 5859 (PROTOCOL)

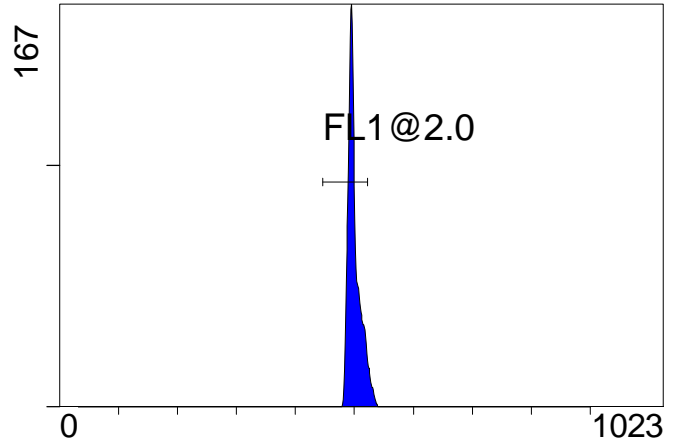
Instrument SN: AN11038 Software Version: Gallios 1.2

[Ungated] FS INT LIN



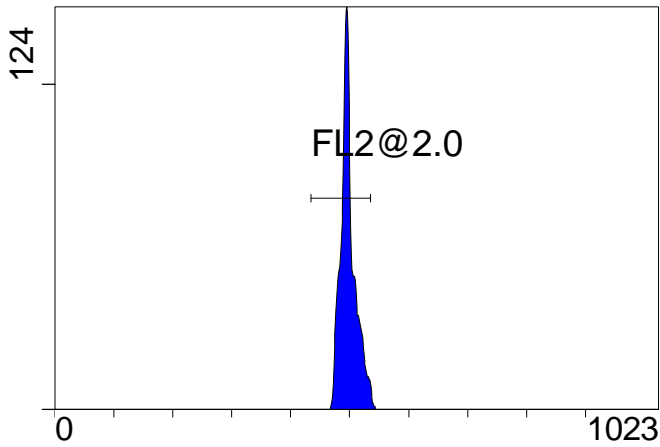
FS INT LIN

(3000) [FCblue@2.0] FL1 INT LIN



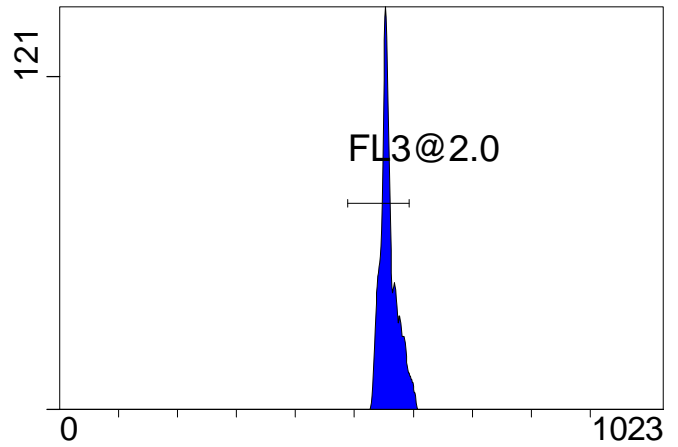
FL1 INT LIN

[FCblue@2.0] FL2 INT LIN



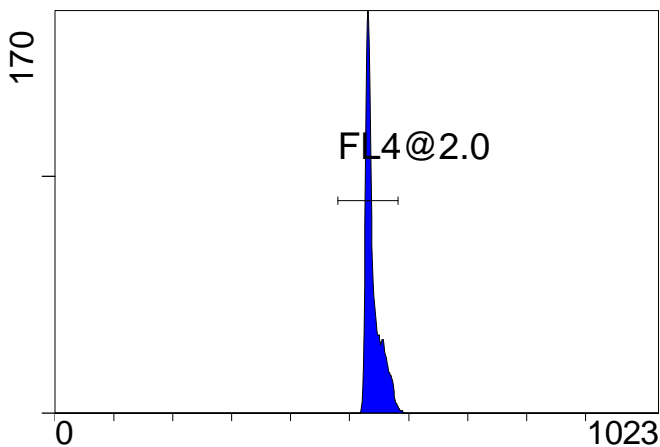
FL2 INT LIN

[FCblue@2.0] FL3 INT LIN



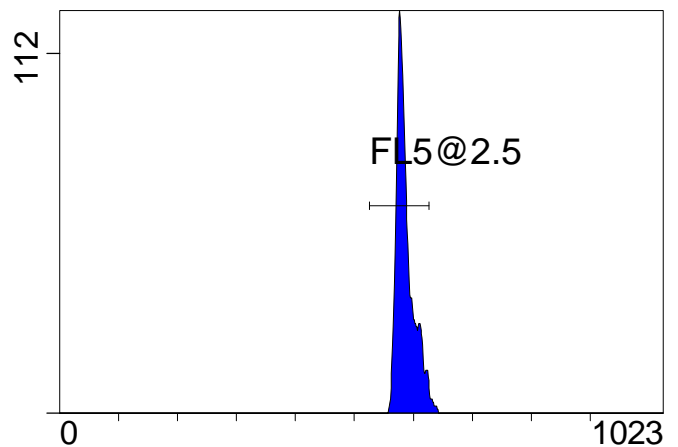
FL3 INT LIN

[FCblue@2.0] FL4 INT LIN



FL4 INT LIN

[FCblue@2.0] FL5 INT LIN



FL5 INT LIN

Institution: IRB

Protocol :Alignment Blue Red Violet_ALIGN.pro

Listmode Replay: Runtime Protocol

Analysis Date: 19-Jan-2015, 09:08:27

Settings File: Alignment Blue Red Violet_ALIGN.pro, 05-Jan-2015, 10:07:26

Listmode File: Gallios FlowCheck 2015-01-19 111.LMD

Run Date: 19-Jan-15, 09:06:05

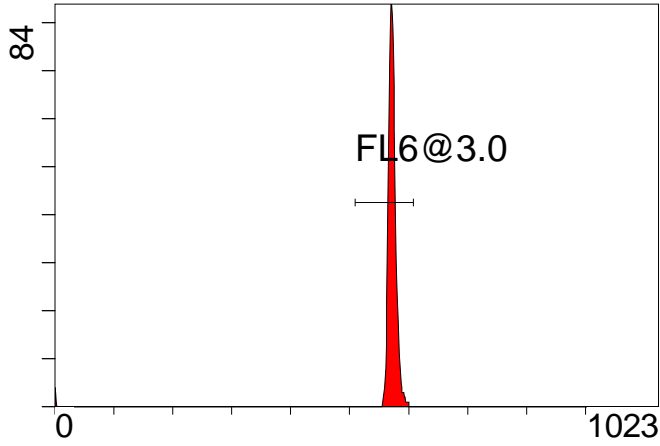
Sample ID: Gallios FlowCheck

User ID: duperray

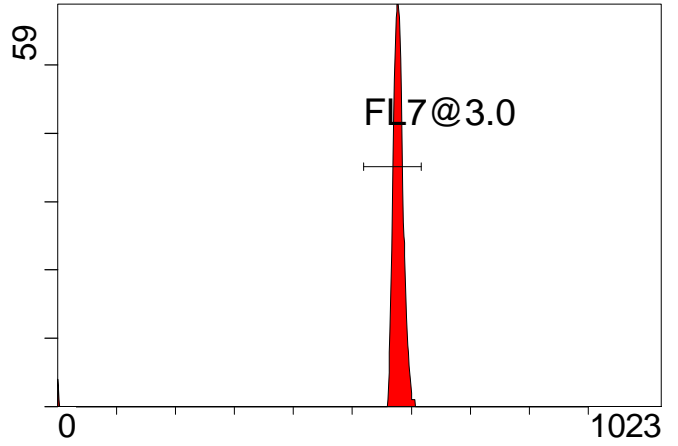
Acquisition Time/Events: 47.0s / 5859 (PROTOCOL)

Instrument SN: AN11038 Software Version: Gallios 1.2

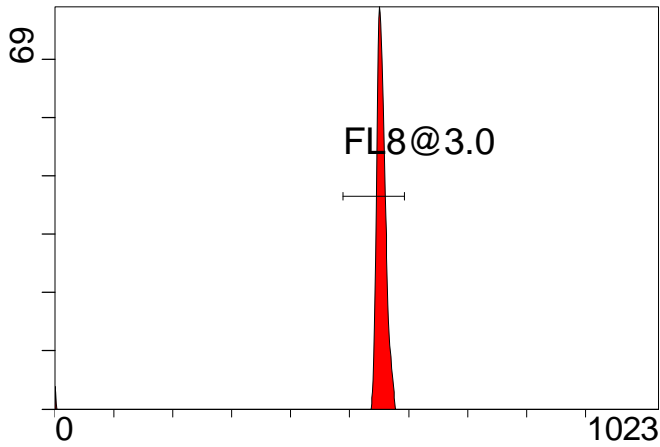
[FCred] FL6 INT LIN



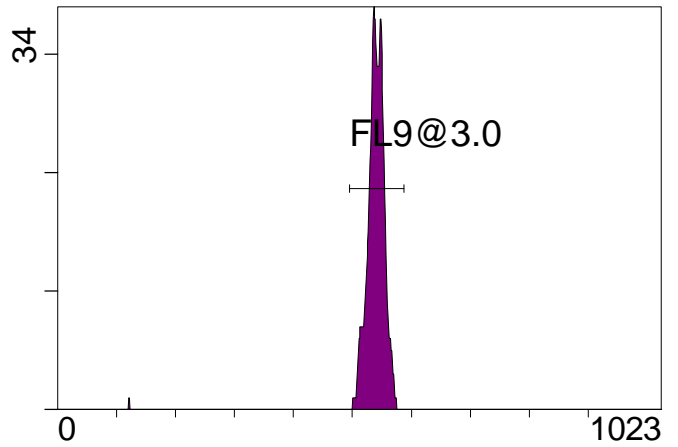
[FCred] FL7 INT LIN



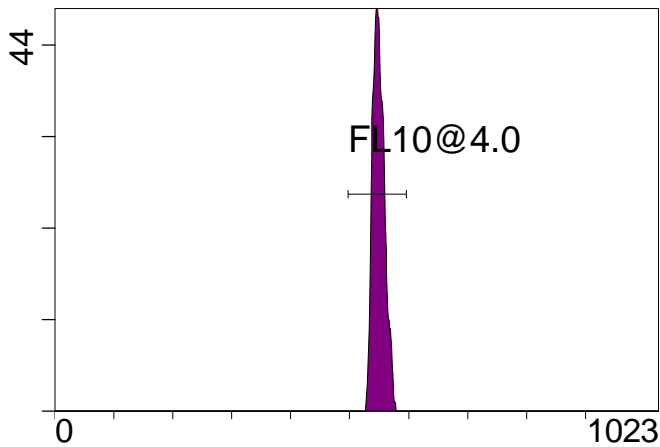
[FCred] FL8 INT LIN



[FCviolet] FL9 INT LIN



[FCviolet] FL10 INT LIN



Statistical Analysis

PROGRAM INFORMATION

File:- Gallios FlowCheck 2015-01-19 111.LMD

Gate:- FCblue@2.0 [FCblue@2.0]

Compensation:-

Region	Number	X-Mean	X-HPCV
ALL	3000	588	1.23
ALL	3000	540	0.73
ALL	3000	559	0.90
ALL	3000	498	0.88
ALL	3000	500	0.83
FL1@2.0	2826	499	0.83
FL2@2.0	2954	498	0.88
FL3@2.0	2875	558	0.90
FL4@2.0	2973	540	0.73
FL5@2.5	2919	586	1.23

File:- Gallios FlowCheck 2015-01-19 111.LMD

Gate:- FCred [FCred]

Compensation:-

Region	Number	X-Mean	X-HPCV
ALL	1328	545	1.04
ALL	1328	569	0.14
ALL	1328	564	0.80
FL6@3.0	1289	572	0.80
FL7@3.0	1288	578	0.14
FL8@3.0	1289	554	1.04

File:- Gallios FlowCheck 2015-01-19 111.LMD

Gate:- FCviolet [FCviolet]

Compensation:-

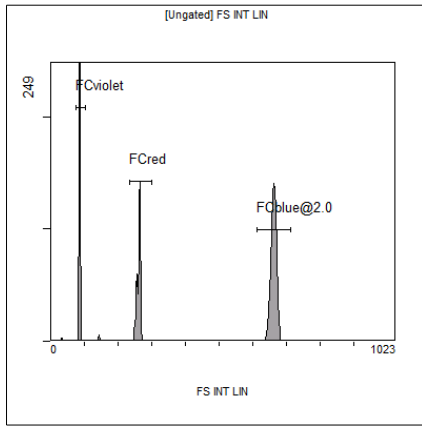
Region	Number	X-Mean	X-HPCV
ALL	1219	531	1.65
ALL	1219	548	1.31
FL10@4.0	1196	550	1.31
FL9@3.0	1194	540	1.65

File:- Gallios FlowCheck 2015-01-19 111.LMD

Gate:- Ungated

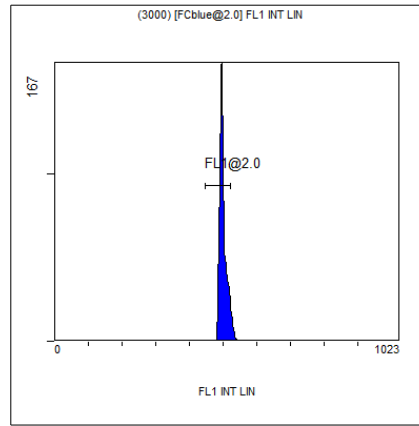
Compensation:-

Region	Number	X-Mean	X-HPCV
ALL	5859	436	1.07
FCblue@2.0	3000	661	1.26
FCred	1328	261	0.52
FCviolet	1219	85.5	1.07



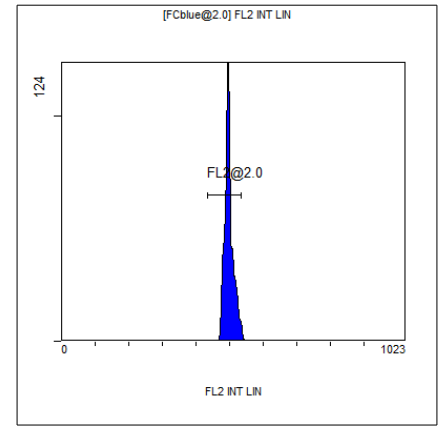
[Ungated] FS INT LIN

Region	Number	HP	X-CV	X-Mean
ALL	5859	1.07		436
FCblue@2.0	3000	1.26		661
FCred	1328	0.52		261
FCviolet	1219	1.07		85.5



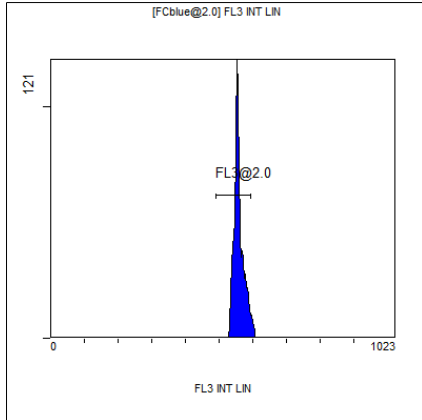
(3000) [FCblue@2.0] FL1 INT LIN

Region	Number	HP	X-CV	X-Mean
ALL	3000	0.83		500
FL1@2.0	2826	0.83		499



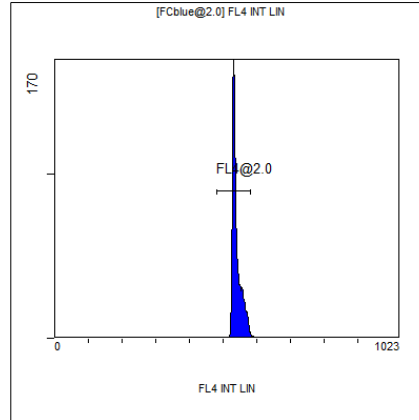
[FCblue@2.0] FL2 INT LIN

Region	Number	HP	X-CV	X-Mean
ALL	3000	0.88		498
FL2@2.0	2954	0.88		498



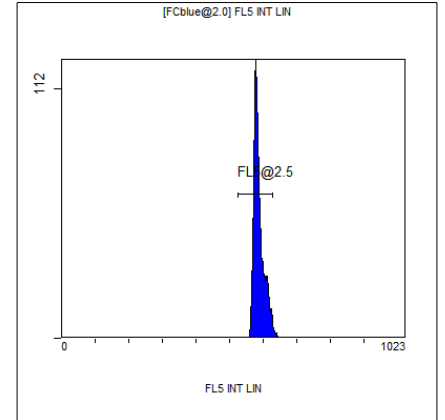
[FCblue@2.0] FL3 INT LIN

Region	Number	HP	X-CV	X-Mean
ALL	3000	0.90		559
FL3@2.0	2875	0.90		558



[FCblue@2.0] FL4 INT LIN

Region	Number	HP	X-CV	X-Mean
ALL	3000	0.73		540
FL4@2.0	2973	0.73		540



[FCblue@2.0] FL5 INT LIN

Region	Number	HP	X-CV	X-Mean
ALL	3000	1.23		588
FL5@2.5	2919	1.23		586