

Institution: IRB

Protocol :Alignment Blue Red Violet\_ALIGN.pro

Listmode Replay: Runtime Protocol

Analysis Date: 26-Jan-2015, 10:58:46

Settings File: Alignment Blue Red Violet\_ALIGN.pro, 05-Jan-2015, 10:07:26

Listmode File: Gallios FlowCheck 2015-01-26 114.LMD

Run Date: 26-Jan-15, 10:57:13

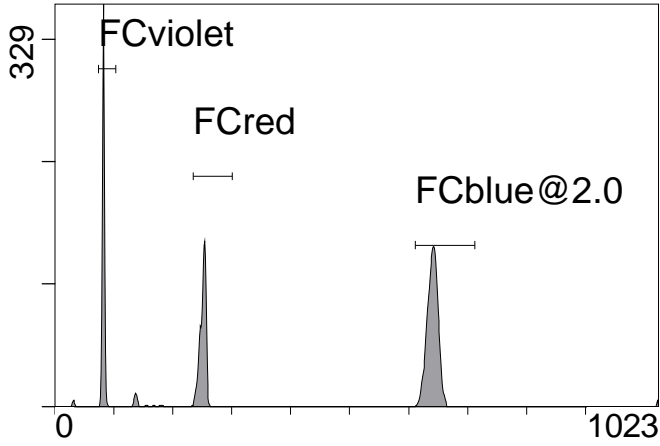
Sample ID: Gallios FlowCheck

User ID: duperray

Acquisition Time/Events: 36.5s / 6550 (PROTOCOL)

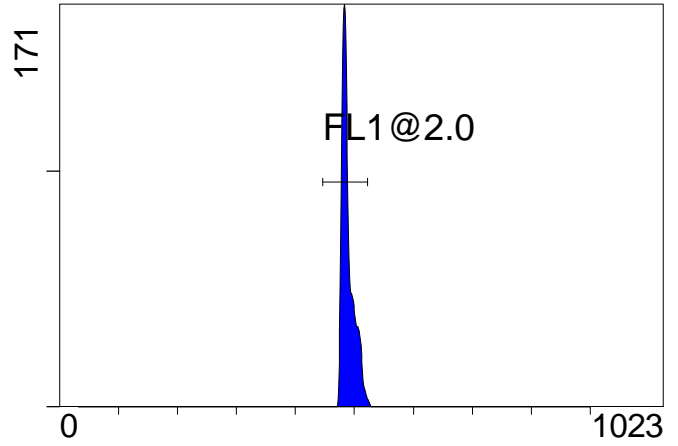
Instrument SN: AN11038 Software Version: Gallios 1.2

[Ungated] FS INT LIN



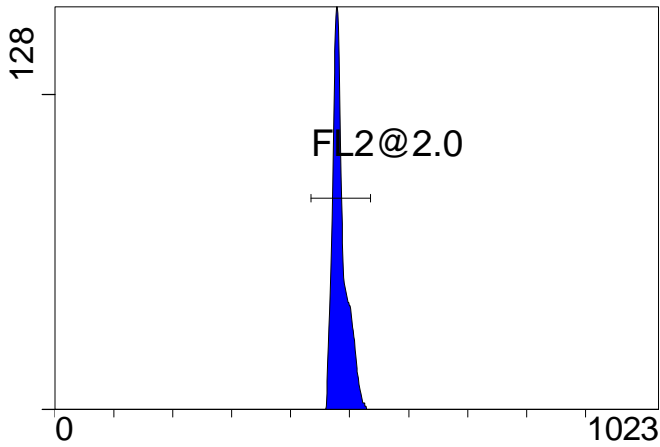
FS INT LIN

(3000) [FCblue@2.0] FL1 INT LIN



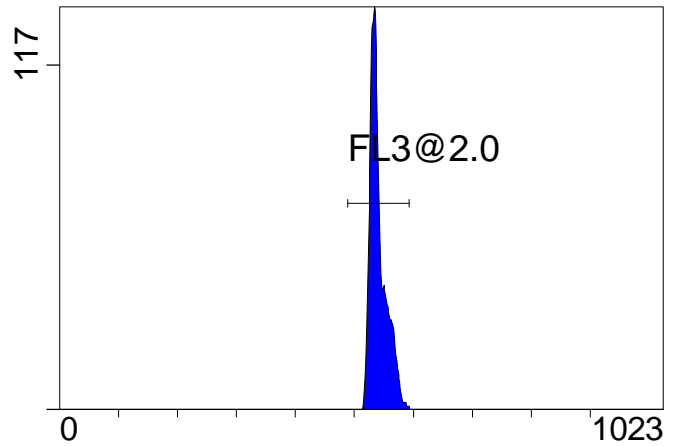
FL1 INT LIN

[FCblue@2.0] FL2 INT LIN



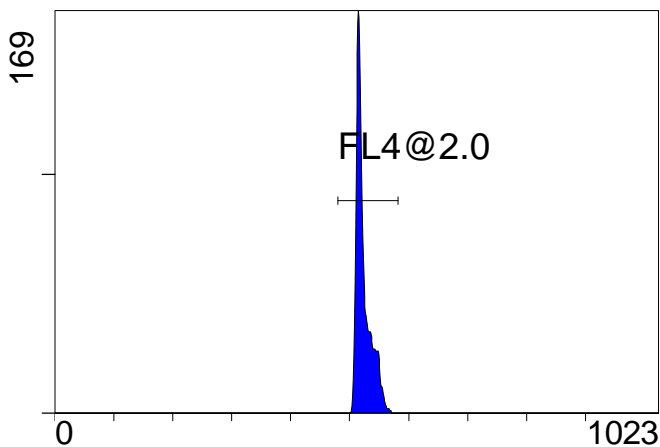
FL2 INT LIN

[FCblue@2.0] FL3 INT LIN



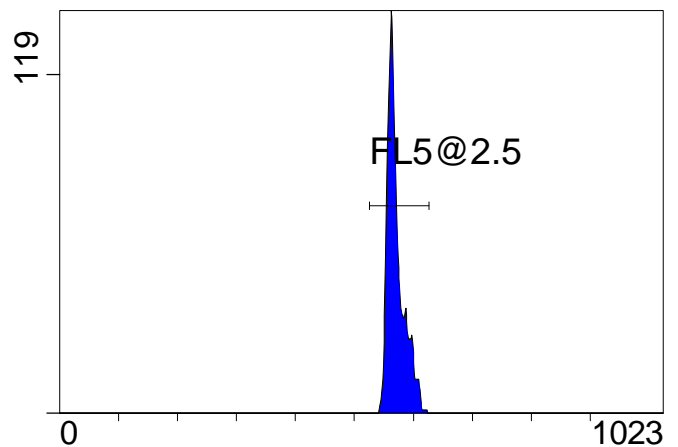
FL3 INT LIN

[FCblue@2.0] FL4 INT LIN



FL4 INT LIN

[FCblue@2.0] FL5 INT LIN



FL5 INT LIN

Institution: IRB

Protocol :Alignment Blue Red Violet\_ALIGN.pro

Listmode Replay: Runtime Protocol

Analysis Date: 26-Jan-2015, 10:58:46

Settings File: Alignment Blue Red Violet\_ALIGN.pro, 05-Jan-2015, 10:07:26

Listmode File: Gallios FlowCheck 2015-01-26 114.LMD

Run Date: 26-Jan-15, 10:57:13

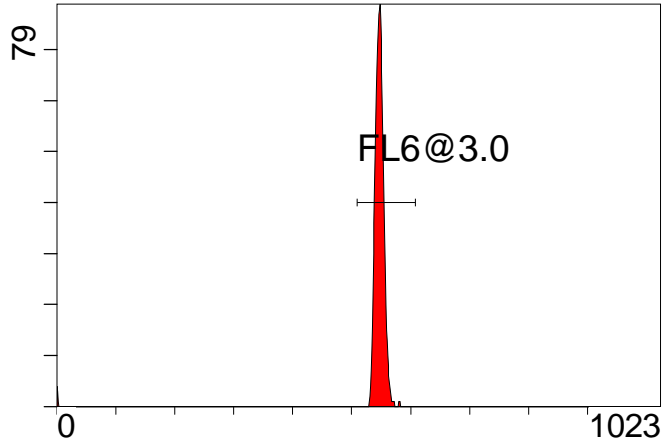
Sample ID: Gallios FlowCheck

User ID: duperray

Acquisition Time/Events: 36.5s / 6550 (PROTOCOL)

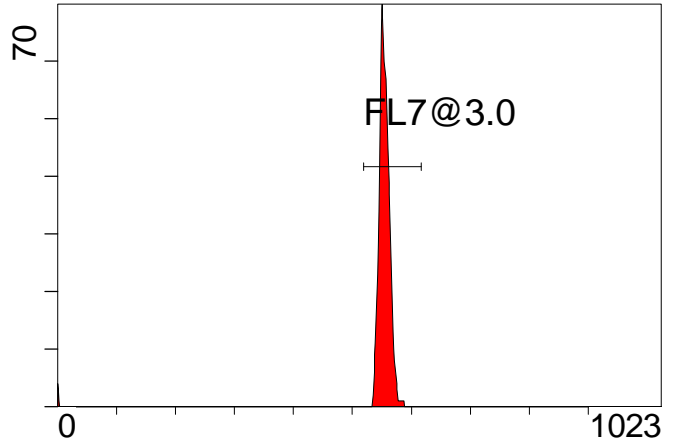
Instrument SN: AN11038 Software Version: Gallios 1.2

[FCred] FL6 INT LIN



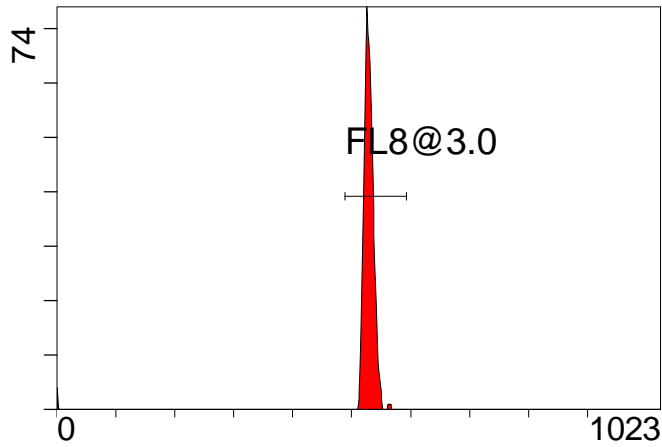
FL6 INT LIN

[FCred] FL7 INT LIN



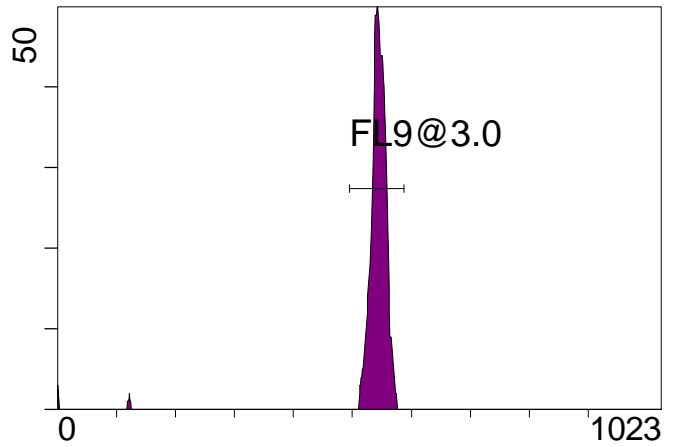
FL7 INT LIN

[FCred] FL8 INT LIN



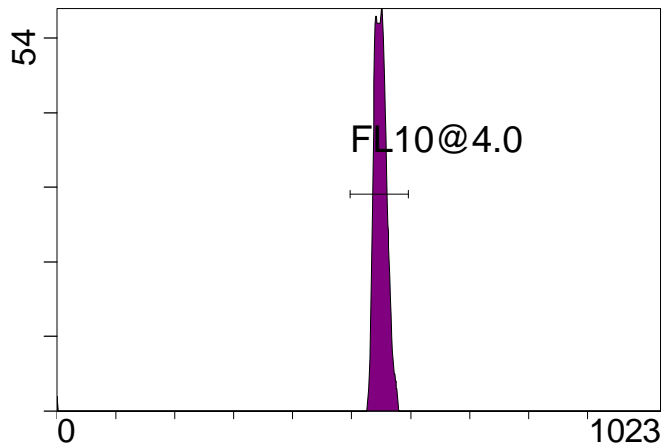
FL8 INT LIN

[FCviolet] FL9 INT LIN



FL9 INT LIN

[FCviolet] FL10 INT LIN



FL10 INT LIN

**Statistical Analysis**

**PROGRAM INFORMATION**

File:- Gallios FlowCheck 2015-01-26 114.LMD

Gate:- FCblue@2.0 [FCblue@2.0]

Compensation:-

Region	Number	X-Mean	X-HPCV
ALL	3000	571	1.26
ALL	3000	524	0.81
ALL	3000	541	1.08
ALL	3000	484	1.13
ALL	3000	489	0.87
FL1@2.0	2971	489	0.87
FL2@2.0	2993	484	1.13
FL3@2.0	2988	541	1.08
FL4@2.0	2997	524	0.81
FL5@2.5	2986	571	1.26

File:- Gallios FlowCheck 2015-01-26 114.LMD

Gate:- FCred [FCred]

Compensation:-

Region	Number	X-Mean	X-HPCV
ALL	1501	522	1.19
ALL	1501	547	1.05
ALL	1501	540	1.12
FL6@3.0	1473	548	1.12
FL7@3.0	1470	555	1.05
FL8@3.0	1473	530	1.19

File:- Gallios FlowCheck 2015-01-26 114.LMD

Gate:- FCviolet [FCviolet]

Compensation:-

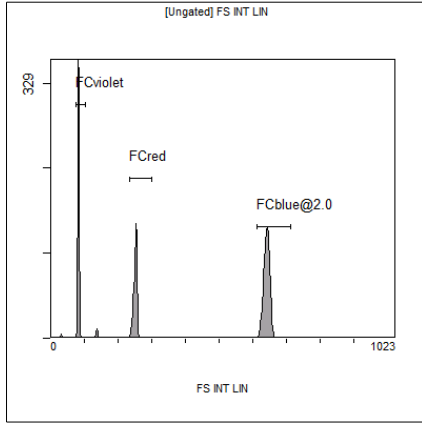
Region	Number	X-Mean	X-HPCV
ALL	1615	533	1.81
ALL	1615	544	1.88
FL10@4.0	1577	550	1.88
FL9@3.0	1573	545	1.81

File:- Gallios FlowCheck 2015-01-26 114.LMD

Gate:- Ungated

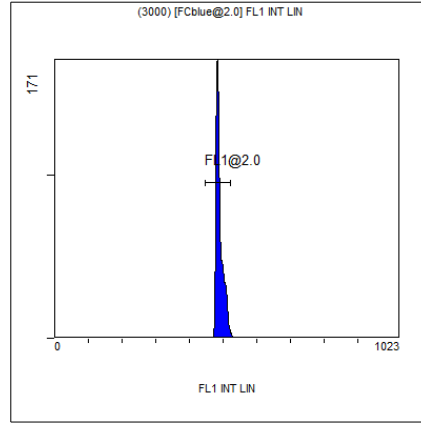
Compensation:-

Region	Number	X-Mean	X-HPCV
ALL	6550	390	1.20
FCblue@2.0	3000	641	1.33
FCred	1501	251	1.03
FCviolet	1615	82.3	1.20



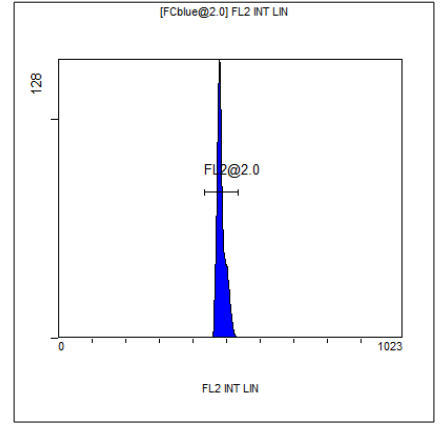
[Ungated] FS INT LIN

Region	Number	HP	X-CV	X-Mean
ALL	6550	1.20		390
FCblue@2.0	3000	1.33		641
FCred	1501	1.03		251
FCviolet	1615	1.20		82.3



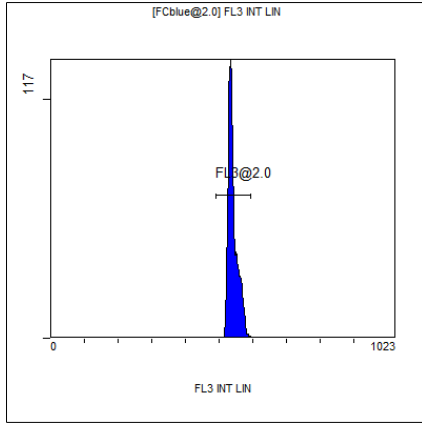
(3000) [FCblue@2.0] FL1 INT LIN

Region	Number	HP	X-CV	X-Mean
ALL	3000	0.87		489
FL1@2.0	2971	0.87		489



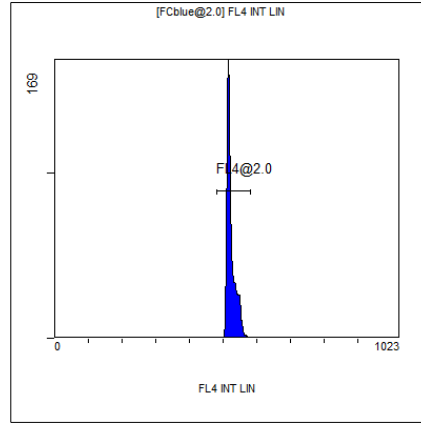
[FCblue@2.0] FL2 INT LIN

Region	Number	HP	X-CV	X-Mean
ALL	3000	1.13		484
FL2@2.0	2993	1.13		484



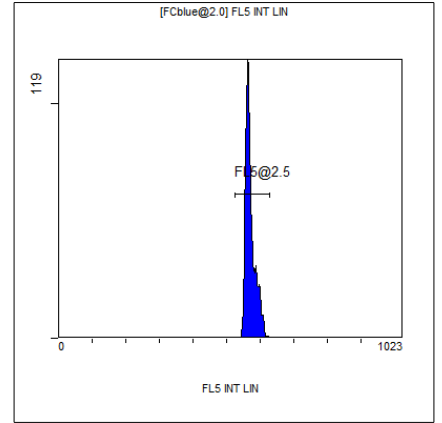
[FCblue@2.0] FL3 INT LIN

Region	Number	HP	X-CV	X-Mean
ALL	3000	1.08		541
FL3@2.0	2988	1.08		541



[FCblue@2.0] FL4 INT LIN

Region	Number	HP	X-CV	X-Mean
ALL	3000	0.81		524
FL4@2.0	2997	0.81		524



[FCblue@2.0] FL5 INT LIN

Region	Number	HP	X-CV	X-Mean
ALL	3000	1.26		571
FL5@2.5	2986	1.26		571