

Institution: IRB

Protocol :Alignment Blue Red Violet_ALIGN.pro

Listmode Replay: Runtime Protocol

Analysis Date: 02-Feb-2015, 09:14:00

Settings File: Alignment Blue Red Violet_ALIGN.pro, 05-Jan-2015, 10:07:26

Listmode File: Gallios FlowCheck 2015-02-02 117.LMD

Run Date: 02-Feb-15, 09:12:20

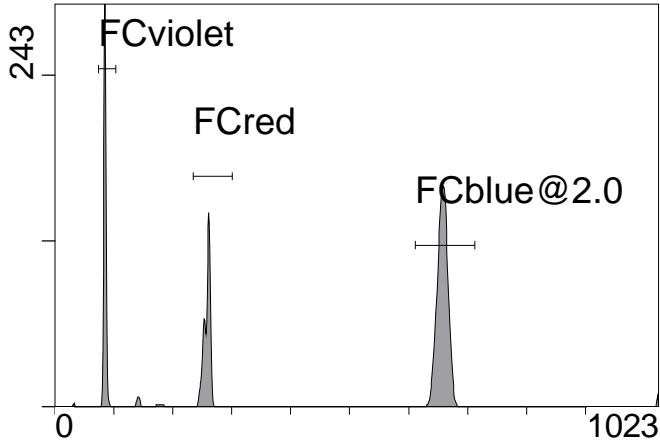
Sample ID: Gallios FlowCheck

User ID: duperray

Acquisition Time/Events: 30.6s / 5772 (PROTOCOL)

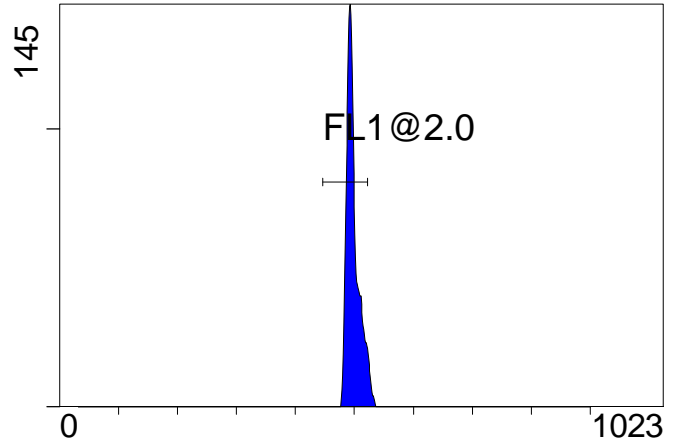
Instrument SN: AN11038 Software Version: Gallios 1.2

[Ungated] FS INT LIN



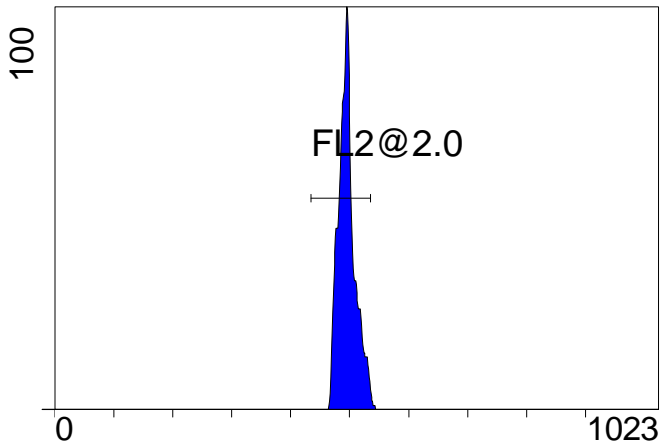
FS INT LIN

(3000) [FCblue@2.0] FL1 INT LIN



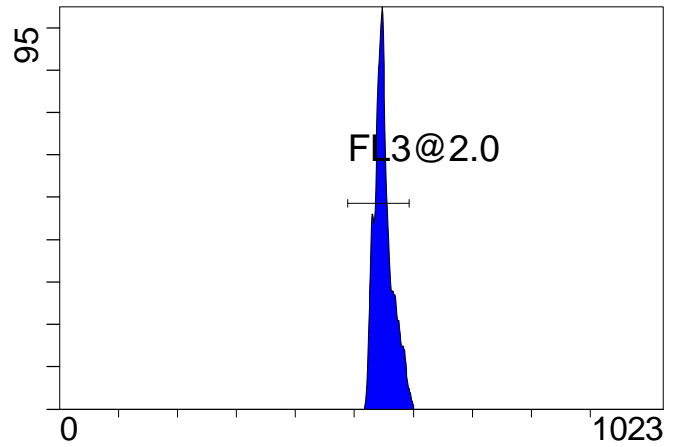
FL1 INT LIN

[FCblue@2.0] FL2 INT LIN



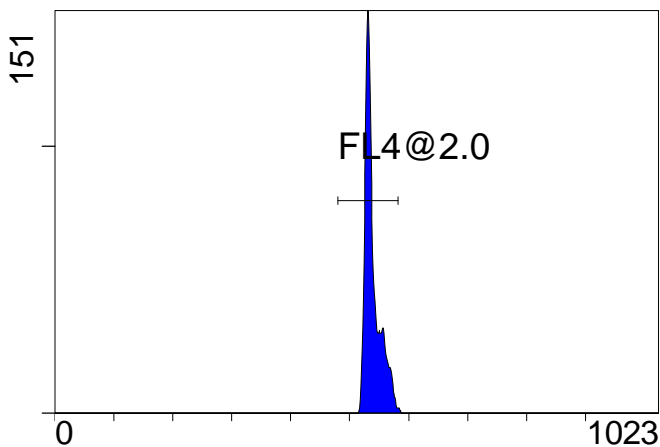
FL2 INT LIN

[FCblue@2.0] FL3 INT LIN



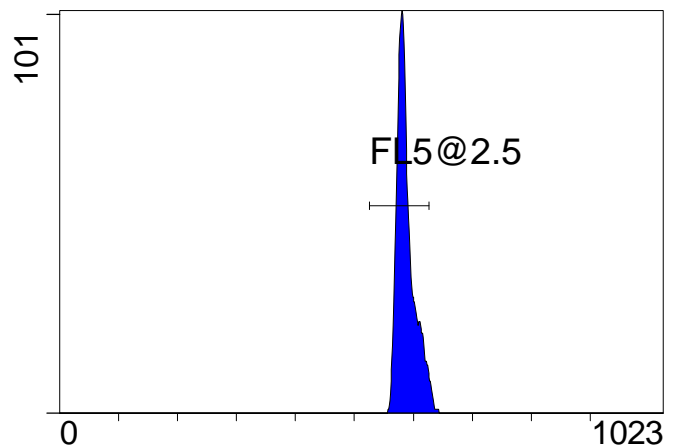
FL3 INT LIN

[FCblue@2.0] FL4 INT LIN



FL4 INT LIN

[FCblue@2.0] FL5 INT LIN



FL5 INT LIN

Institution: IRB

Protocol :Alignment Blue Red Violet_ALIGN.pro

Listmode Replay: Runtime Protocol

Analysis Date: 02-Feb-2015, 09:14:00

Settings File: Alignment Blue Red Violet_ALIGN.pro, 05-Jan-2015, 10:07:26

Listmode File: Gallios FlowCheck 2015-02-02 117.LMD

Run Date: 02-Feb-15, 09:12:20

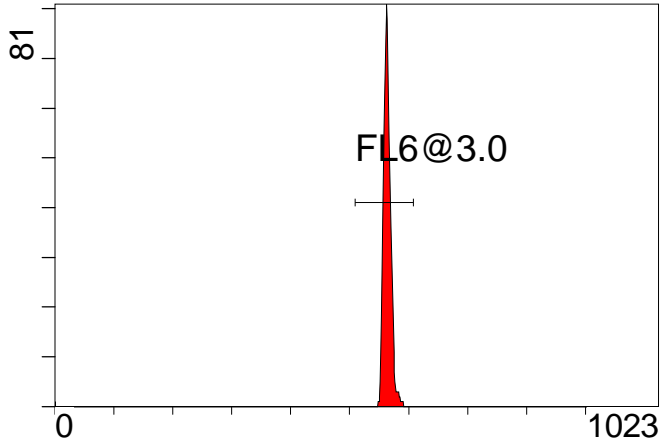
Sample ID: Gallios FlowCheck

User ID: duperray

Acquisition Time/Events: 30.6s / 5772 (PROTOCOL)

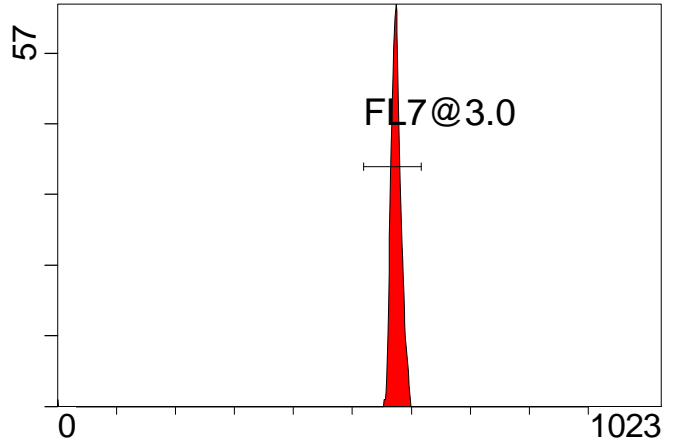
Instrument SN: AN11038 Software Version: Gallios 1.2

[FCred] FL6 INT LIN



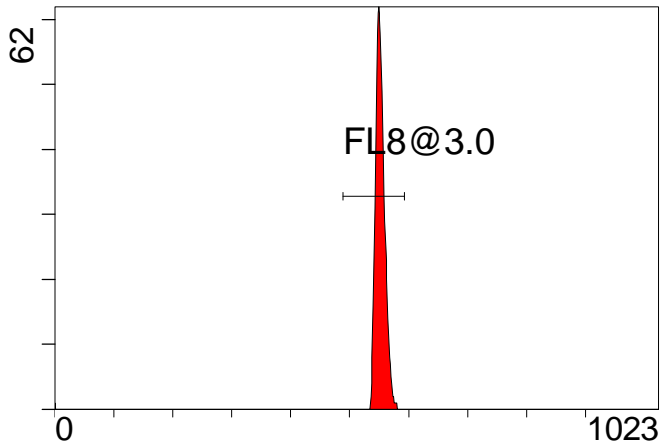
FL6 INT LIN

[FCred] FL7 INT LIN



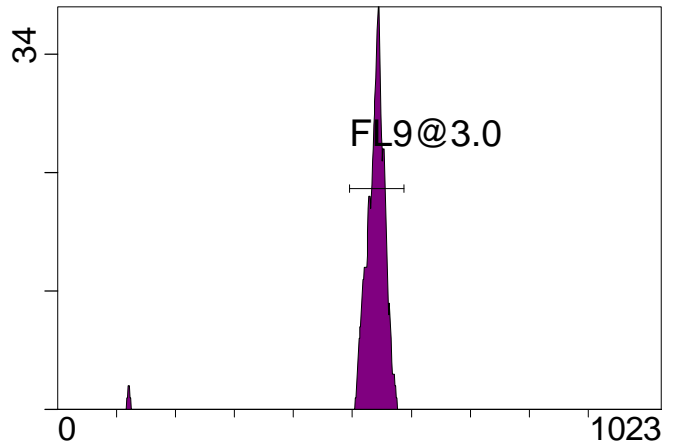
FL7 INT LIN

[FCred] FL8 INT LIN



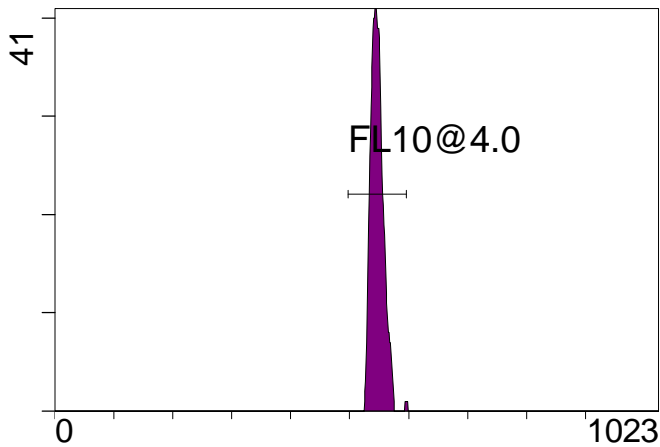
FL8 INT LIN

[FCviolet] FL9 INT LIN



FL9 INT LIN

[FCviolet] FL10 INT LIN



FL10 INT LIN

Statistical Analysis

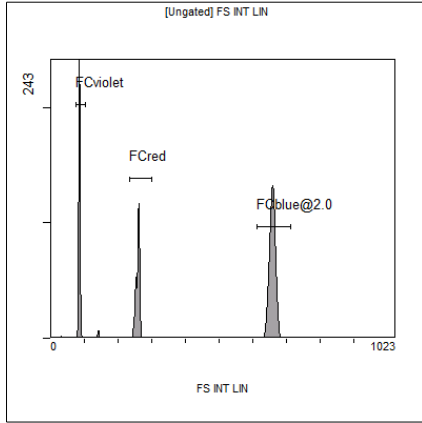
PROGRAM INFORMATION

File:- Gallios FlowCheck 2015-02-02 117.LMD				
Gate:- FCblue@2.0 [FCblue@2.0]				
Compensation:-				
Region	Number	X-Mean	X-HPCV	
ALL	3000	589	1.25	
ALL	3000	540	0.93	
ALL	3000	551	1.27	
ALL	3000	496	1.43	
ALL	3000	498	1.09	
FL1@2.0	2857	497	1.09	
FL2@2.0	2961	496	1.43	
FL3@2.0	2953	550	1.27	
FL4@2.0	2975	539	0.93	
FL5@2.5	2905	587	1.25	

File:- Gallios FlowCheck 2015-02-02 117.LMD				
Gate:- FCred [FCred]				
Compensation:-				
Region	Number	X-Mean	X-HPCV	
ALL	1232	549	1.02	
ALL	1232	571	1.23	
ALL	1232	560	0.90	
FL6@3.0	1218	564	0.90	
FL7@3.0	1213	575	1.23	
FL8@3.0	1216	552	1.02	

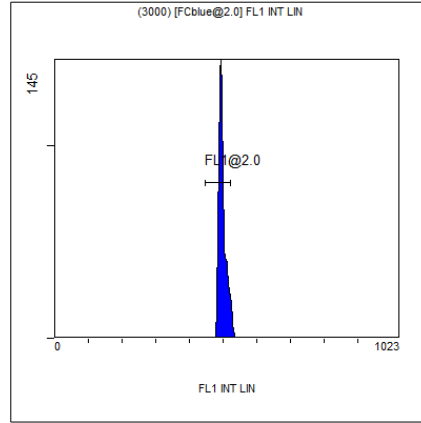
File:- Gallios FlowCheck 2015-02-02 117.LMD				
Gate:- FCviolet [FCviolet]				
Compensation:-				
Region	Number	X-Mean	X-HPCV	
ALL	1200	527	0.86	
ALL	1200	546	1.59	
FL10@4.0	1177	548	1.59	
FL9@3.0	1162	540	0.86	

File:- Gallios FlowCheck 2015-02-02 117.LMD				
Gate:- Ungated				
Compensation:-				
Region	Number	X-Mean	X-HPCV	
ALL	5772	436	1.06	
FCblue@2.0	3000	657	1.10	
FCred	1232	258	0.83	
FCviolet	1200	84.8	1.06	



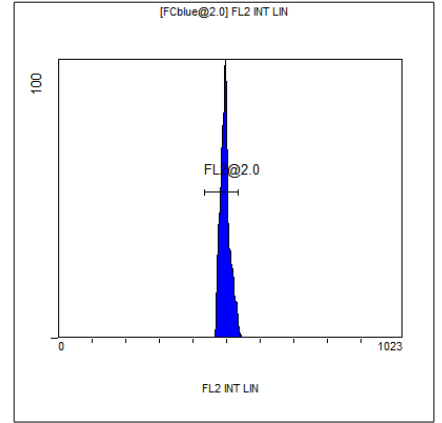
[Ungated] FS INT LIN

Region	Number	HP	X-CV	X-Mean
ALL	5772	1.06		436
FCblue@2.0	3000	1.10		657
FCred	1232	0.83		258
FCviolet	1200	1.06		84.8



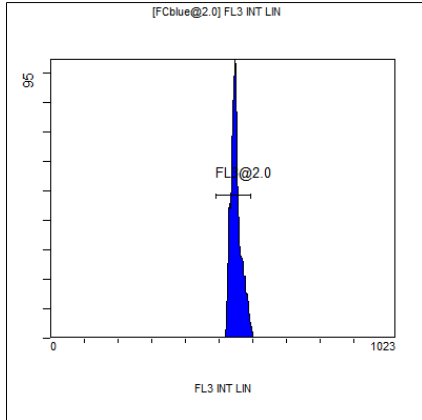
(3000) [FCblue@2.0] FL1 INT LIN

Region	Number	HP	X-CV	X-Mean
ALL	3000	1.09		498
FL1@2.0	2857	1.09		497



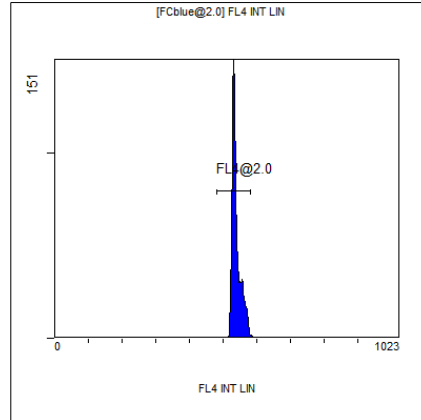
[FCblue@2.0] FL2 INT LIN

Region	Number	HP	X-CV	X-Mean
ALL	3000	1.43		496
FL2@2.0	2961	1.43		496



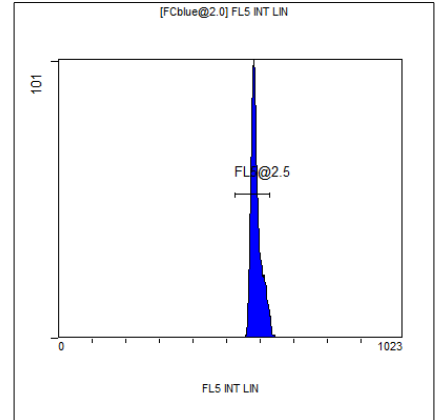
[FCblue@2.0] FL3 INT LIN

Region	Number	HP	X-CV	X-Mean
ALL	3000	1.27		551
FL3@2.0	2953	1.27		550



[FCblue@2.0] FL4 INT LIN

Region	Number	HP	X-CV	X-Mean
ALL	3000	0.93		540
FL4@2.0	2975	0.93		539



[FCblue@2.0] FL5 INT LIN

Region	Number	HP	X-CV	X-Mean
ALL	3000	1.25		589
FL5@2.5	2905	1.25		587