

Institution: IRB

Protocol :Alignment Blue Red Violet_ALIGN.pro

Listmode Replay: Runtime Protocol

Analysis Date: 07-Apr-2015, 09:05:53

Settings File: Alignment Blue Red Violet_ALIGN.pro, 16-Mar-2015, 10:23:15

Listmode File: Gallios FlowCheck 2015-04-07 182.LMD

Run Date: 07-Apr-15, 09:04:23

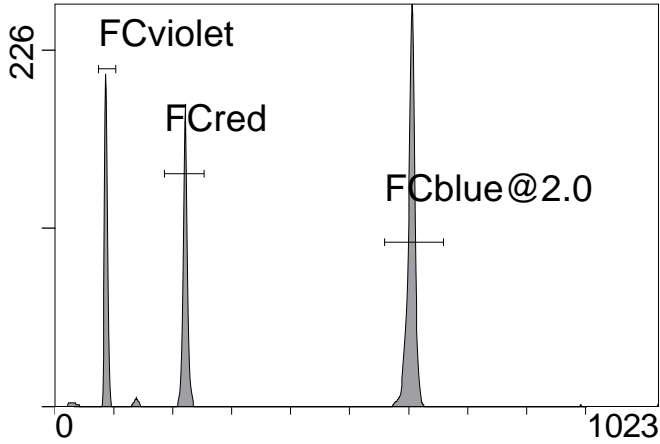
Sample ID: Gallios FlowCheck

User ID: duperray

Acquisition Time/Events: 40.0s / 5948 (PROTOCOL)

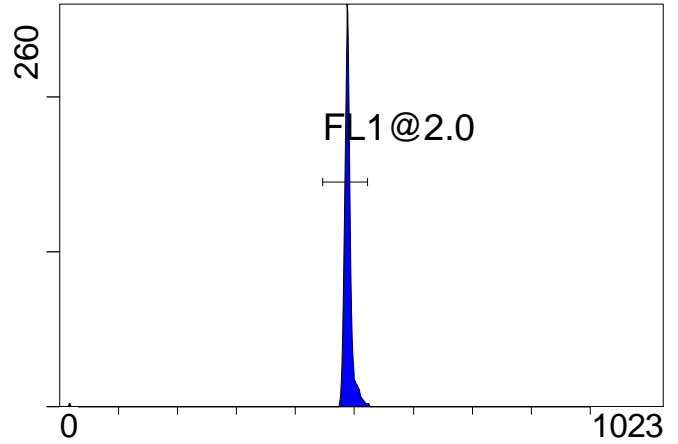
Instrument SN: AN11038 Software Version: Gallios 1.2

[Ungated] FS INT LIN



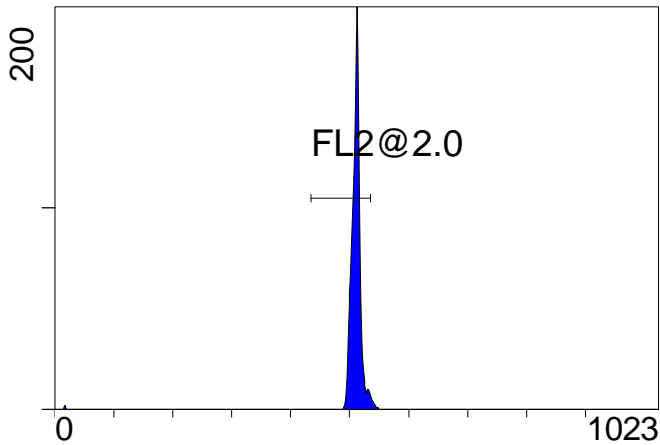
FS INT LIN

(3000) [FCblue@2.0] FL1 INT LIN



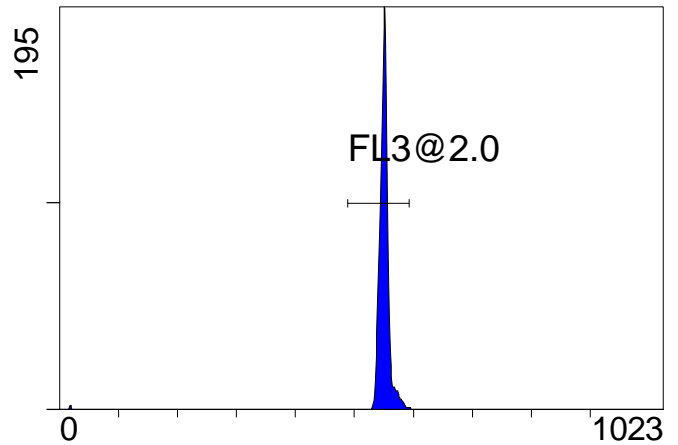
FL1 INT LIN

[FCblue@2.0] FL2 INT LIN



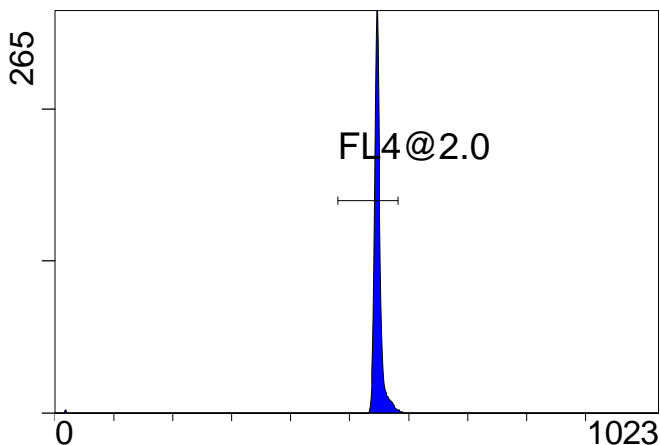
FL2 INT LIN

[FCblue@2.0] FL3 INT LIN



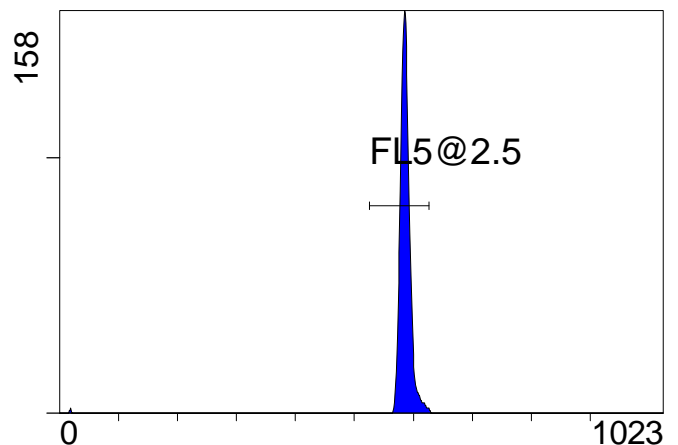
FL3 INT LIN

[FCblue@2.0] FL4 INT LIN



FL4 INT LIN

[FCblue@2.0] FL5 INT LIN



FL5 INT LIN

Institution: IRB

Protocol :Alignment Blue Red Violet_ALIGN.pro

Listmode Replay: Runtime Protocol

Analysis Date: 07-Apr-2015, 09:05:53

Settings File: Alignment Blue Red Violet_ALIGN.pro, 16-Mar-2015, 10:23:15

Listmode File: Gallios FlowCheck 2015-04-07 182.LMD

Run Date: 07-Apr-15, 09:04:23

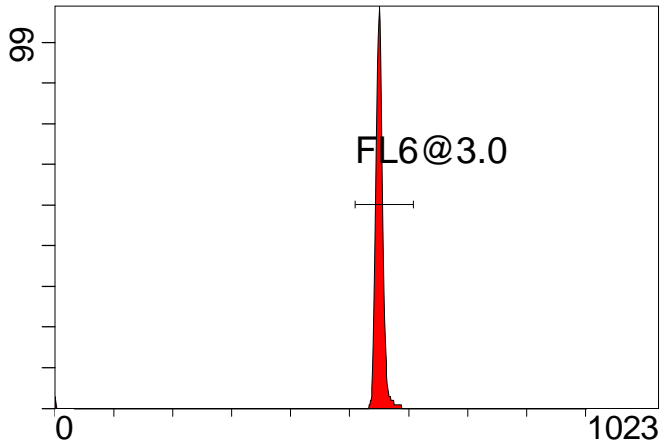
Sample ID: Gallios FlowCheck

User ID: duperray

Acquisition Time/Events: 40.0s / 5948 (PROTOCOL)

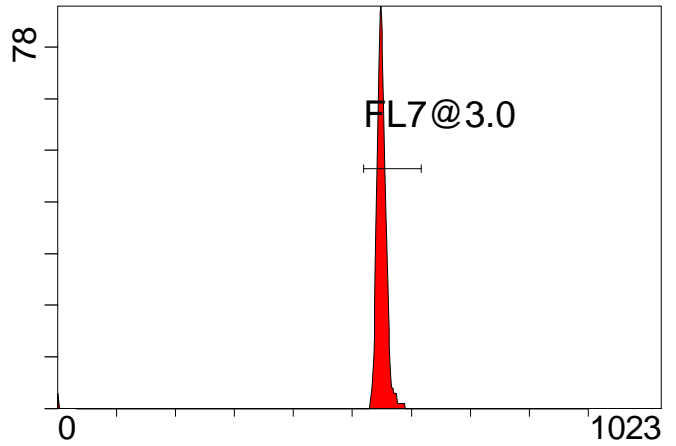
Instrument SN: AN11038 Software Version: Gallios 1.2

[FCred] FL6 INT LIN



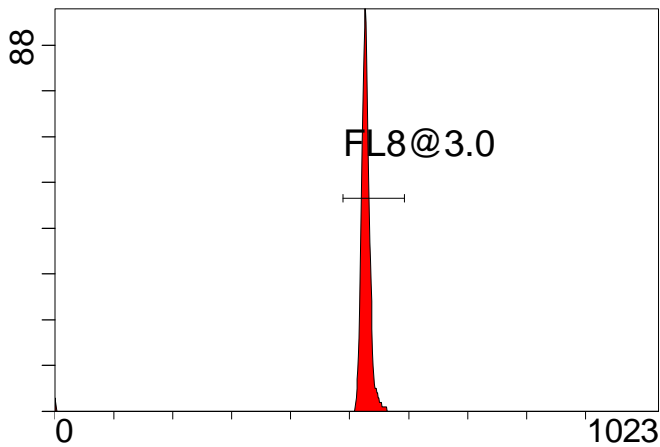
FL6 INT LIN

[FCred] FL7 INT LIN



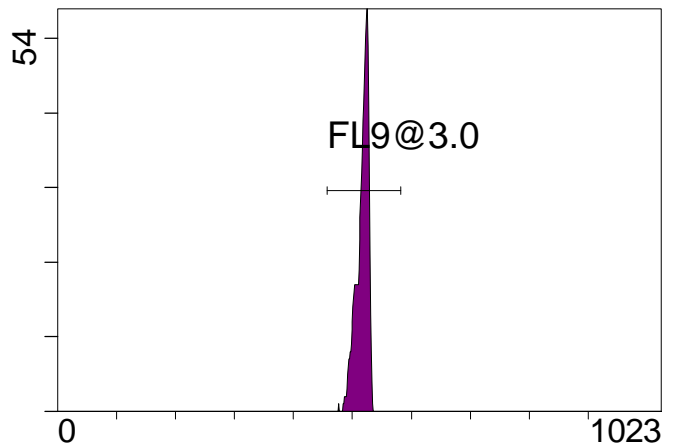
FL7 INT LIN

[FCred] FL8 INT LIN



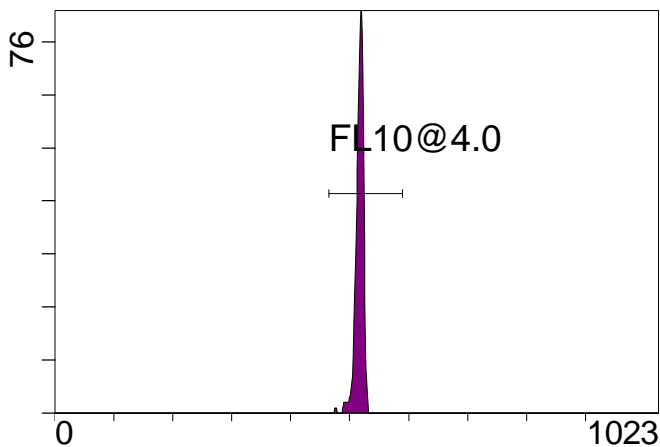
FL8 INT LIN

[FCviolet] FL9 INT LIN



FL9 INT LIN

[FCviolet] FL10 INT LIN



FL10 INT LIN

Statistical Analysis

PROGRAM INFORMATION

File:- Gallios FlowCheck 2015-04-07 182.LMD

Gate:- FCblue@2.0 [FCblue@2.0]

Compensation:-

Region	Number	X-Mean	X-HPCV
ALL	3000	584	1.07
ALL	3000	546	0.58
ALL	3000	548	0.77
ALL	3000	508	0.79
ALL	3000	487	0.73
FL1@2.0	2957	490	0.73
FL2@2.0	2900	511	0.79
FL3@2.0	2960	551	0.77
FL4@2.0	2943	548	0.58
FL5@2.5	2956	587	1.07

File:- Gallios FlowCheck 2015-04-07 182.LMD

Gate:- FCred [FCred]

Compensation:-

Region	Number	X-Mean	X-HPCV
ALL	1489	521	0.96
ALL	1489	543	1.06
ALL	1489	544	0.85
FL6@3.0	1468	551	0.85
FL7@3.0	1462	550	1.06
FL8@3.0	1468	528	0.96

File:- Gallios FlowCheck 2015-04-07 182.LMD

Gate:- FCviolet [FCviolet]

Compensation:-

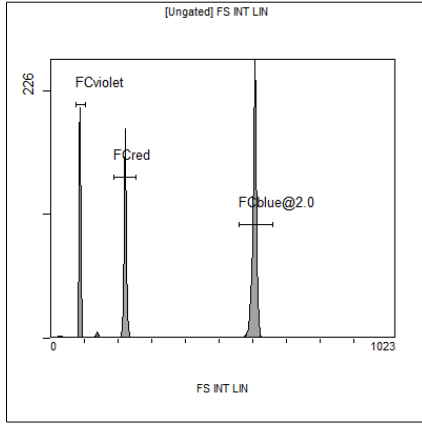
Region	Number	X-Mean	X-HPCV
ALL	1177	513	0.91
ALL	1177	513	0.93
FL10@4.0	1170	515	0.91
FL9@3.0	1170	515	0.93

File:- Gallios FlowCheck 2015-04-07 182.LMD

Gate:- Ungated

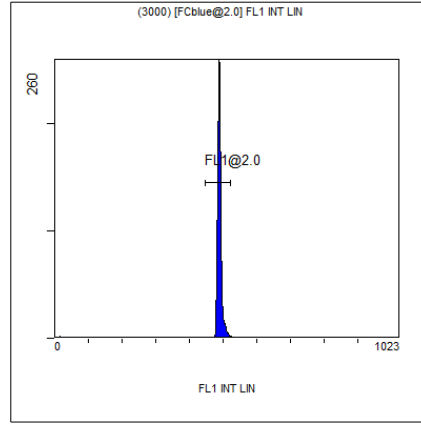
Compensation:-

Region	Number	X-Mean	X-HPCV
ALL	5948	393	0.65
FCblue@2.0	3000	604	0.65
FCred	1489	221	1.14
FCviolet	1177	86.7	2.03



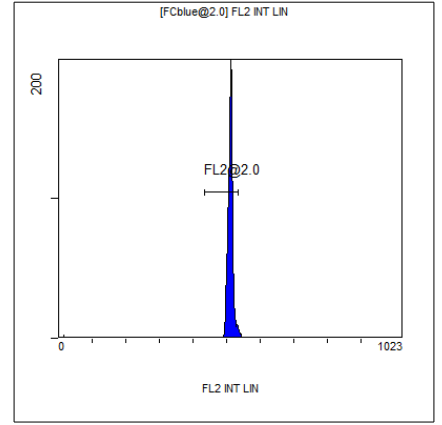
[Ungated] FS INT LIN

Region	Number	HP X-CV	X-Mean
ALL	5948	0.65	393
FCblue@2.0	3000	0.65	604
FCred	1489	1.14	221
FCviolet	1177	2.03	86.7



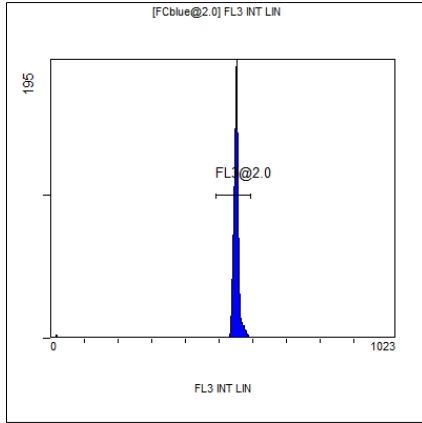
(3000) [FCblue@2.0] FL1 INT LIN

Region	Number	HP X-CV	X-Mean
ALL	3000	0.73	487
FL1@2.0	2957	0.73	490



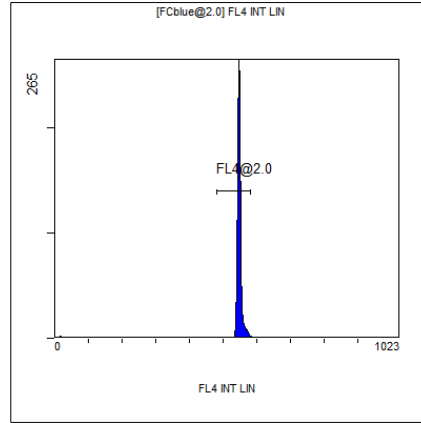
[FCblue@2.0] FL2 INT LIN

Region	Number	HP X-CV	X-Mean
ALL	3000	0.79	508
FL2@2.0	2900	0.79	511



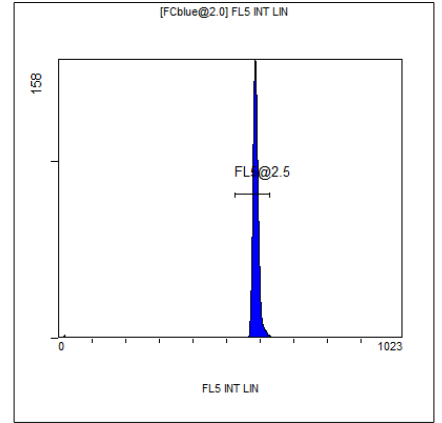
[FCblue@2.0] FL3 INT LIN

Region	Number	HP X-CV	X-Mean
ALL	3000	0.77	548
FL3@2.0	2960	0.77	551



[FCblue@2.0] FL4 INT LIN

Region	Number	HP X-CV	X-Mean
ALL	3000	0.58	546
FL4@2.0	2943	0.58	548



[FCblue@2.0] FL5 INT LIN

Region	Number	HP X-CV	X-Mean
ALL	3000	1.07	584
FL5@2.5	2956	1.07	587