

Institution: IRB

Protocol :Alignment Blue Red Violet_ALIGN.pro

Listmode Replay: Runtime Protocol

Analysis Date: 08-Jun-2015, 09:35:23

Settings File: Alignment Blue Red Violet_ALIGN.pro, 11-May-2015, 09:15:44

Listmode File: Gallios FlowCheck 2015-06-08 209.LMD

Run Date: 08-Jun-15, 09:33:36

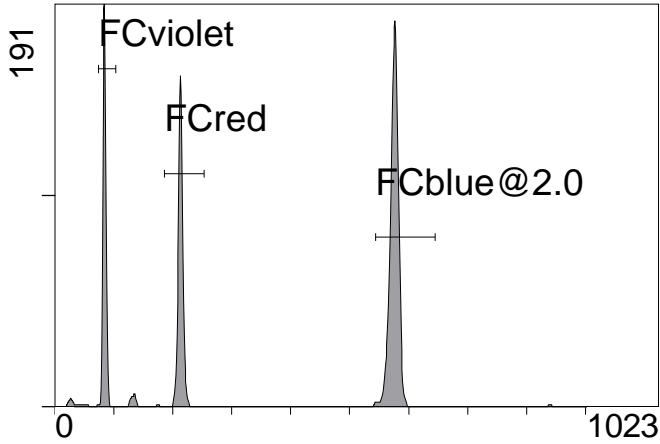
Sample ID: Gallios FlowCheck

User ID: duperray

Acquisition Time/Events: 23.8s / 6091 (PROTOCOL)

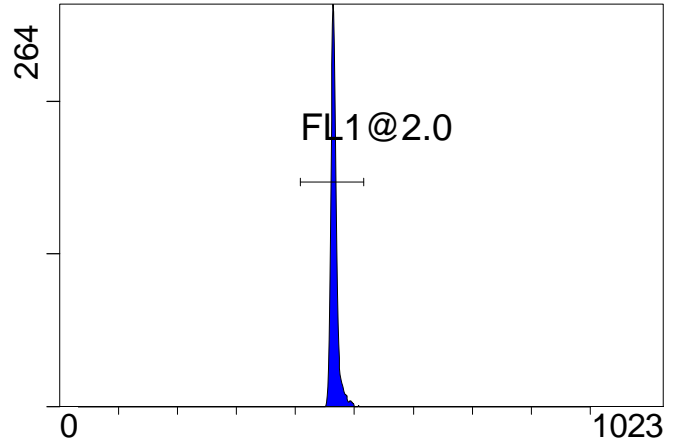
Instrument SN: AN11038 Software Version: Gallios 1.2

[Ungated] FS INT LIN



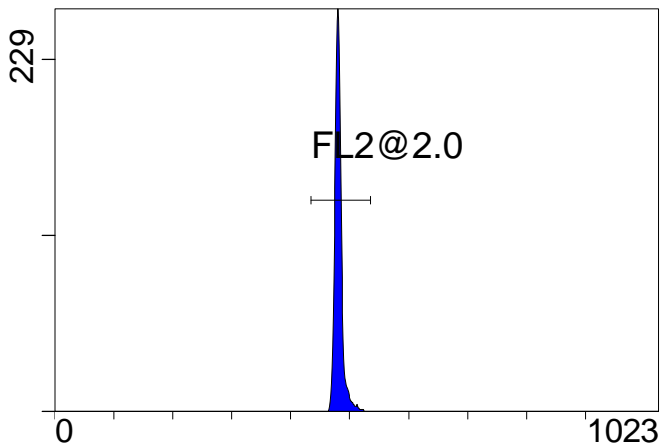
FS INT LIN

(3000) [FCblue@2.0] FL1 INT LIN



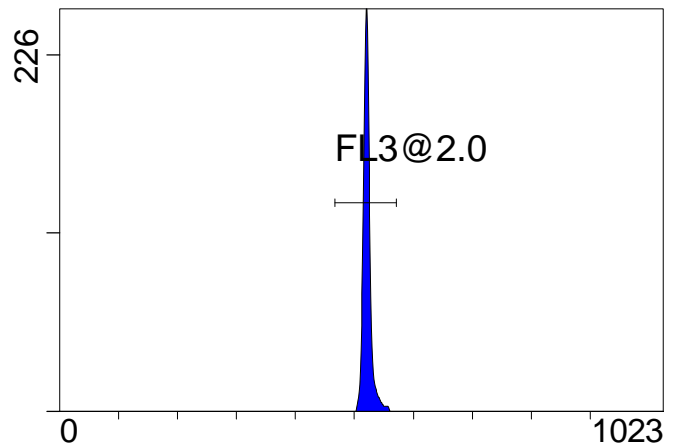
FL1 INT LIN

[FCblue@2.0] FL2 INT LIN



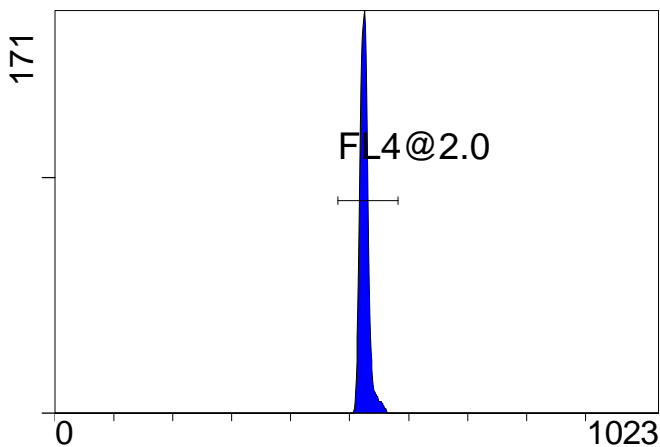
FL2 INT LIN

[FCblue@2.0] FL3 INT LIN



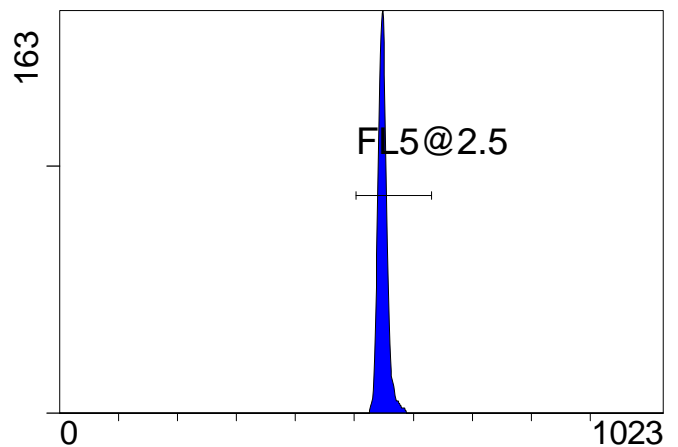
FL3 INT LIN

[FCblue@2.0] FL4 INT LIN



FL4 INT LIN

[FCblue@2.0] FL5 INT LIN



FL5 INT LIN

Institution: IRB

Protocol :Alignment Blue Red Violet_ALIGN.pro

Listmode Replay: Runtime Protocol

Analysis Date: 08-Jun-2015, 09:35:23

Settings File: Alignment Blue Red Violet_ALIGN.pro, 11-May-2015, 09:15:44

Listmode File: Gallios FlowCheck 2015-06-08 209.LMD

Run Date: 08-Jun-15, 09:33:36

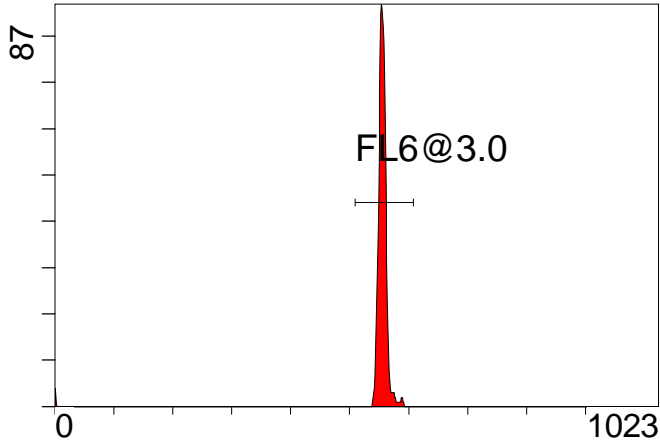
Sample ID: Gallios FlowCheck

User ID: duperray

Acquisition Time/Events: 23.8s / 6091 (PROTOCOL)

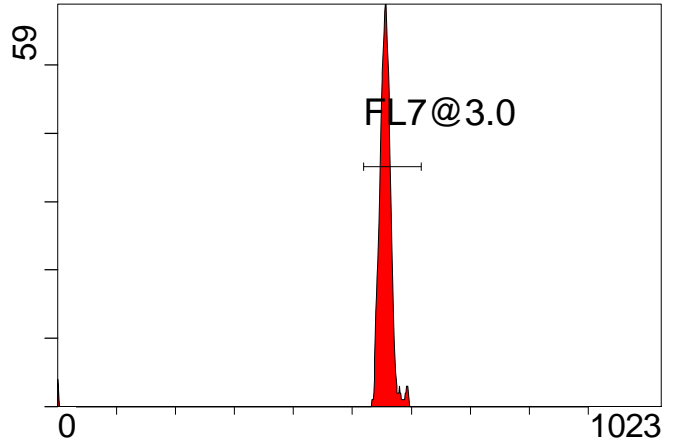
Instrument SN: AN11038 Software Version: Gallios 1.2

[FCred] FL6 INT LIN



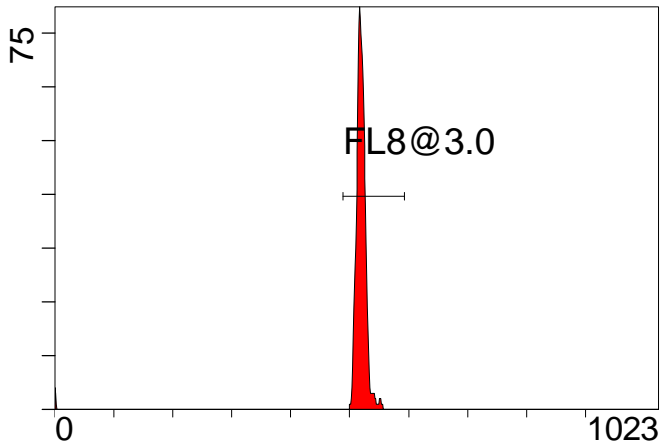
FL6 INT LIN

[FCred] FL7 INT LIN



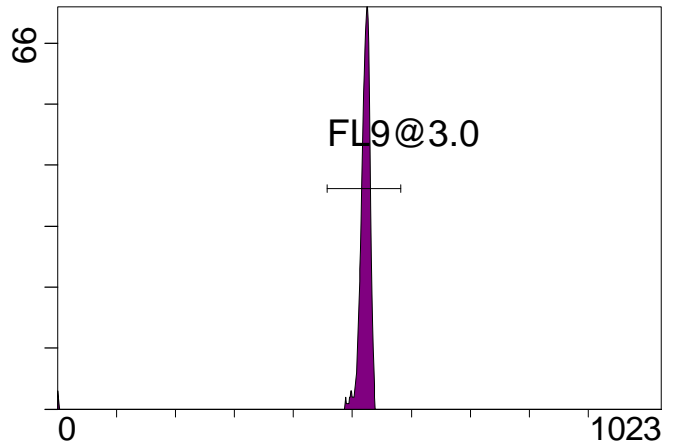
FL7 INT LIN

[FCred] FL8 INT LIN



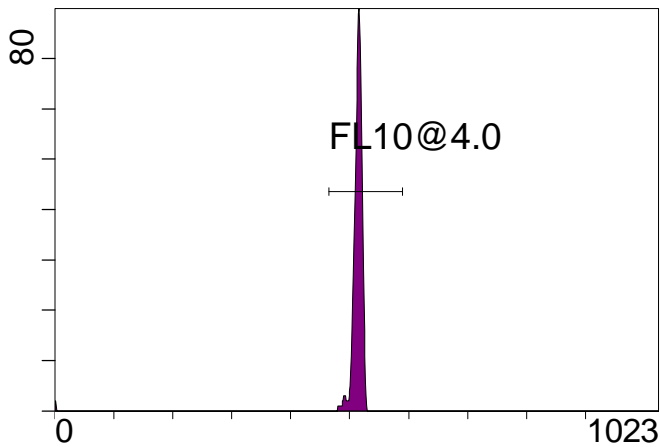
FL8 INT LIN

[FCviolet] FL9 INT LIN



FL9 INT LIN

[FCviolet] FL10 INT LIN



FL10 INT LIN

Statistical Analysis

PROGRAM INFORMATION

File:- Gallios FlowCheck 2015-06-08 209.LMD

Gate:- FCblue@2.0 [FCblue@2.0]

Compensation:-

Region	Number	X-Mean	X-HPCV
ALL	3000	548	1.07
ALL	3000	520	0.73
ALL	3000	465	0.75
ALL	3000	525	1.12
ALL	3000	480	0.87
FL1@2.0	2983	466	0.75
FL2@2.0	2981	482	0.87
FL3@2.0	2973	522	0.73
FL4@2.0	2976	526	1.12
FL5@2.5	2979	549	1.07

File:- Gallios FlowCheck 2015-06-08 209.LMD

Gate:- FCred [FCred]

Compensation:-

Region	Number	X-Mean	X-HPCV
ALL	1422	513	1.15
ALL	1422	549	1.31
ALL	1422	549	0.89
FL6@3.0	1396	556	0.89
FL7@3.0	1389	557	1.31
FL8@3.0	1389	521	1.15

File:- Gallios FlowCheck 2015-06-08 209.LMD

Gate:- FCviolet [FCviolet]

Compensation:-

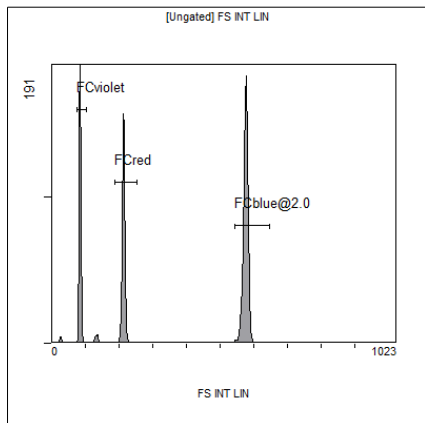
Region	Number	X-Mean	X-HPCV
ALL	1285	505	0.93
ALL	1285	510	1.19
FL10@4.0	1264	513	0.93
FL9@3.0	1258	521	1.19

File:- Gallios FlowCheck 2015-06-08 209.LMD

Gate:- Ungated

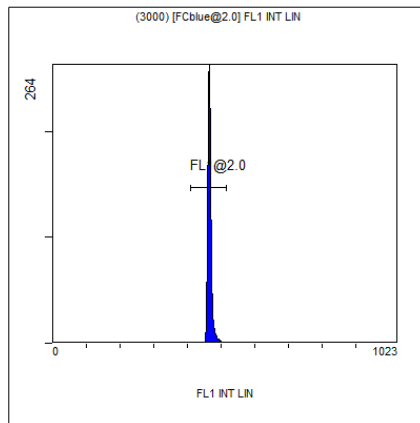
Compensation:-

Region	Number	X-Mean	X-HPCV
ALL	6091	369	2.31
FCblue@2.0	3000	576	0.92
FCred	1422	213	1.07
FCviolet	1285	84.1	2.31



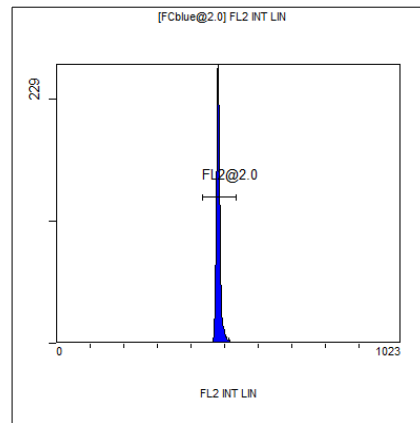
[Ungated] FS INT LIN

Region	Number	HP	X-CV	X-Mean
ALL	6091	2.31		369
FCblue@2.0	3000	0.92		576
FCred	1422	1.07		213
FCviolet	1285	2.31		84.1



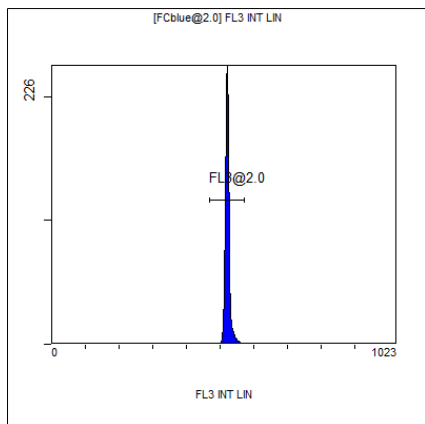
(3000) [FCblue@2.0] FL1 INT LIN

Region	Number	HP	X-CV	X-Mean
ALL	3000	0.75		465
FL1@2.0	2983	0.75		466



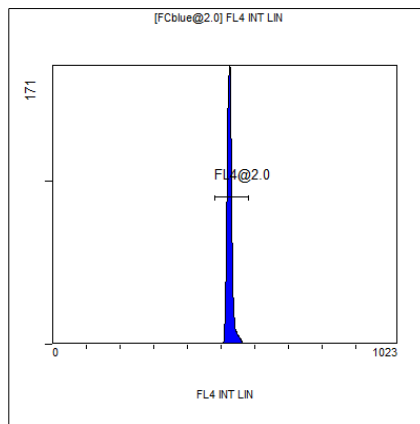
[FCblue@2.0] FL2 INT LIN

Region	Number	HP	X-CV	X-Mean
ALL	3000	0.87		480
FL2@2.0	2981	0.87		482



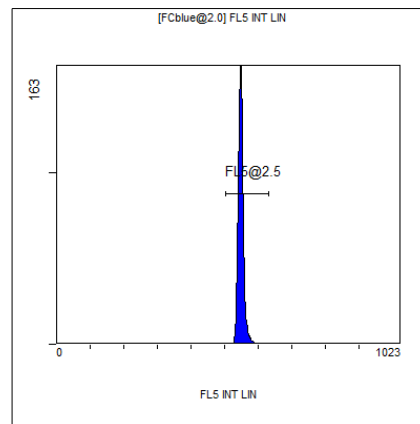
[FCblue@2.0] FL3 INT LIN

Region	Number	HP	X-CV	X-Mean
ALL	3000	0.73		520
FL3@2.0	2973	0.73		522



[FCblue@2.0] FL4 INT LIN

Region	Number	HP	X-CV	X-Mean
ALL	3000	1.12		525
FL4@2.0	2976	1.12		526



[FCblue@2.0] FL5 INT LIN

Region	Number	HP	X-CV	X-Mean
ALL	3000	1.07		548
FL5@2.5	2979	1.07		549